

QUEENS WAY - MATERIAL LIST (SEE NOTE 1)

ITEM NUMBER	QTY	DESCRIPTION
1	4	8" FLxFL GIV W/HANDWHEEL AND PIPE STAND
2	4	8" REST. FCA
3	7.7±	8" SCH 40 STL PIPE, EL&C (ENDS PER PLANS)
4	1	8"x5" SCH 40 STL REDUCER, EL&C
5	1	5" WELD NECK FLANGE
6	1	4" SOWF
7	1	6"x4" SCH 40 STL REDUCER, EL&C
8	3	6" WELD NECK FLANGE
9	2	8"x6" SCH 40 STL REDUCER, EL&C
10	2	6" PRV, FLxFL (RE-INSTALL EXISTING)
11	1	8" SOWF
12	4	PIPE STAND -- SEE DETAIL 3/D2
13	4	1-1/2" THREAD-O-LET, 1-1/2"x1" DIELECTRIC BUSHING, 1" BRASS NIPPLE, 1" BALL VALVE. SEE M SHEETS FOR CONTINUATION.
14	4	8" INSULATING FLANGE KITS
15	1	1-1/4"x1" DIELECTRIC BUSHING, 1" BALL VALVE W/1" PLUG.

NOTES FOR SHEET C3:

1. THE MATERIAL LIST PROVIDED IS INTENDED TO BE COMPLETE (LESS INCIDENTAL ITEMS, SEE NOTE 5 OF THE SPECIFICATION SECTION PROVIDED ON SHEET G1) AND SUITABLE FOR THE BASIS OF THE BID. PRIOR TO ORDERING AND FABRICATION THE CONTRACTOR SHALL BE RESPONSIBLE TO VERIFY LENGTHS, DIAMETERS AND FITTING DETAILS.
2. ALL STEEL PIPE AND FITTINGS SHALL BE FABRICATED PRIOR TO COATING PER SECTION 09900 OF THE TECHNICAL SPECIFICATIONS.

K:\2009-10 CAPITAL PROJECTS\04-189 2010 Pump and PRV Rehab\04-189 Pump Rehab\Design\09\04-189 QUEEN WAY C3.dwg
Jun 11, 2010 2:38pm

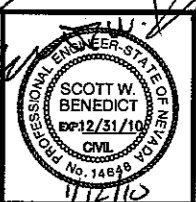
REVISION	DESCRIPTION	BY	APP	DATE
ADDENDUM #1		SB		1/10

WORK ORDER NO. 04-189
 DESIGNED SWB
 DRAWN
 DATE DECEMBER 2009
 CHECKED CHS/BE
 SUBMITTED WS/KJ
 RECOMMENDED
 APPROVED

TRUCKEE MEADOWS WATER AUTHORITY
 1355 CAPITAL BLVD. / PO BOX 30013
 RENO, NEVADA 89520-3013
 PH 775-834-8000 / FX 775-834-8003

NOT REPRODUCIBLE
 PROPERTY OF TRUCKEE MEADOWS WATER AUTHORITY. RETURN UPON COMPLETION OF PROJECT
 (Per Homeland Security Act)

2010 PUMP STATION REHABILITATION
QUEEN WAY PS
CIVIL SITE AND MECHANICAL PLANS

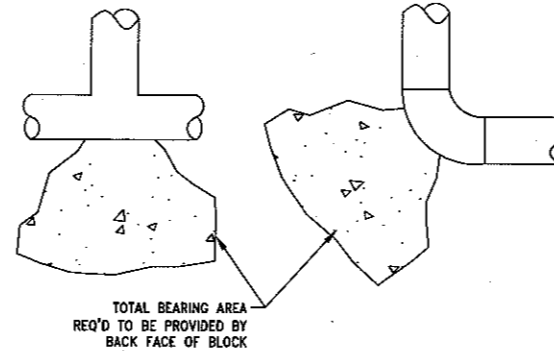


SHEET NUMBER
C3
 10 OF 48

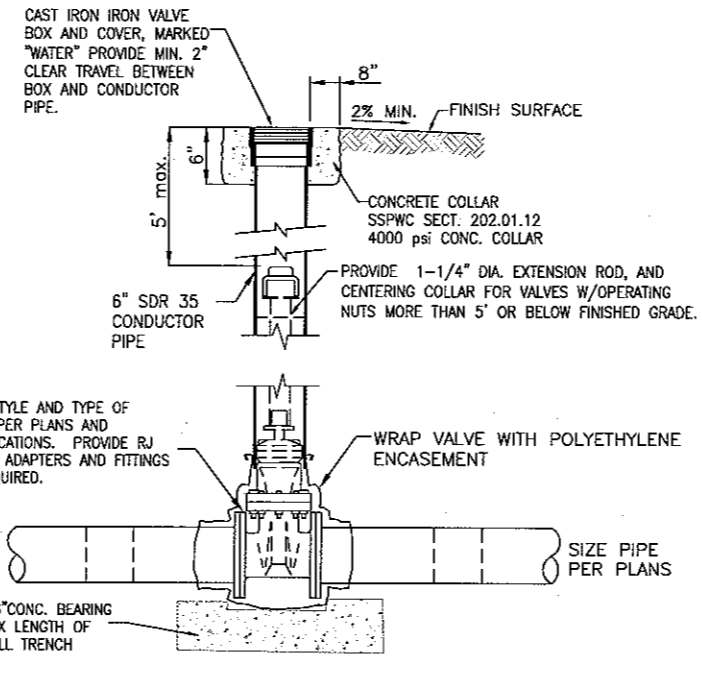
BEARING AREA REQUIRED, FT ²				
MAIN SIZE, INCHES	TEE BRANCH/ DEAD END	90° ELBOW	45° ELBOW	22.5° ELBOW
6	4.2	6.0	3.2	1.7
8	7.5	10.7	5.8	2.9
10	11.8	16.7	9.0	4.6
12	17.0	24.0	13.0	6.6

NOTES:

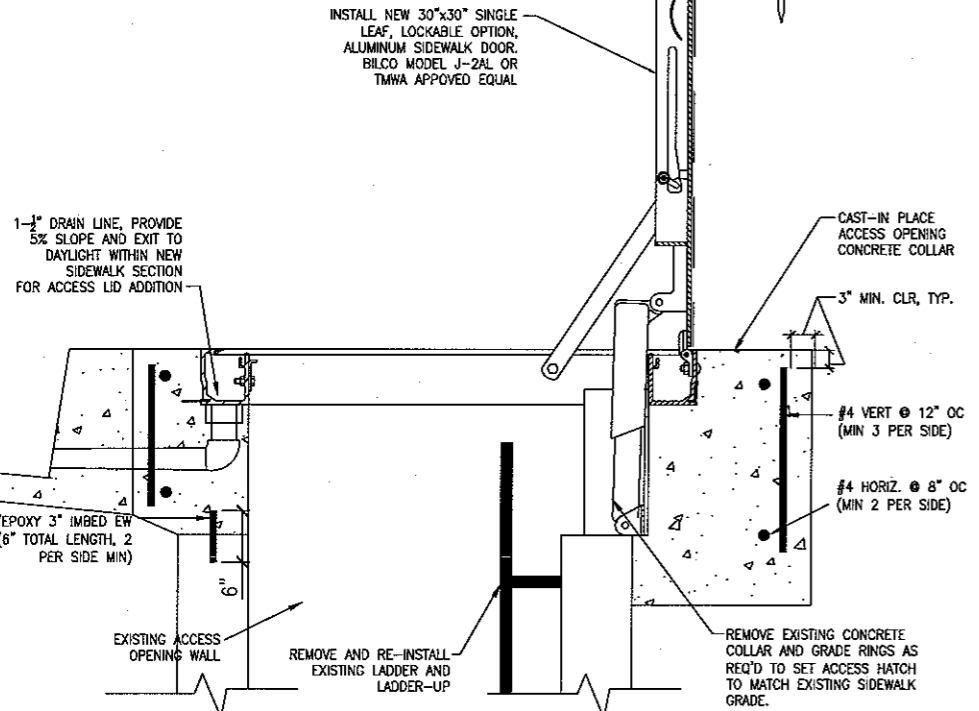
- BEARING AREAS PROVIDED ARE BASED ON THE FOLLOWING TEST PRESSURE AND SOIL BEARING CAPACITY. IF DEVIATIONS IN FIELD ARE NEEDED, CONTACT ENGINEER TO DETERMINE ADJUSTMENTS. TEST PRESSURE PSI =150 SOIL BEARING CAPACITY, LBS/FT² =1500, SAFETY FACTOR =1.5.
- USE 4 SACK, 2,000 PSI CONCRETE.
- PLACEMENT OF THRUST BLOCKS TO BE INSPECTED/APPROVED BY TMWA REPRESENTATIVE PRIOR TO BACKFILL.



THRUST BLOCK SCHEDULE/NOTES 1
N.T.S. D3



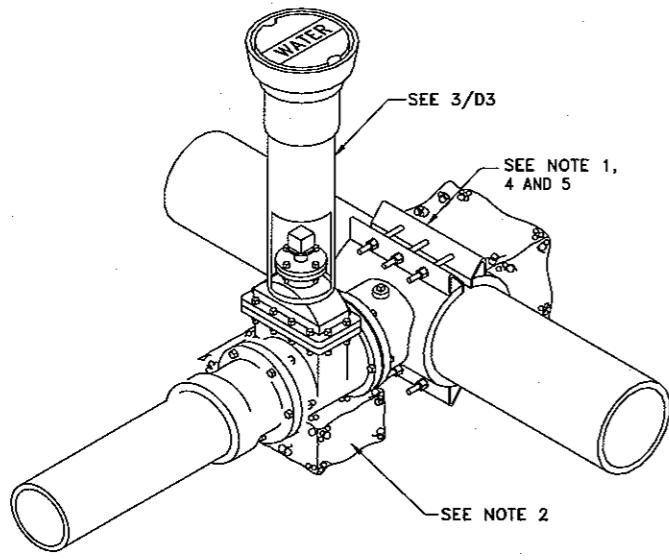
GATE VALVE 3
N.T.S. D3



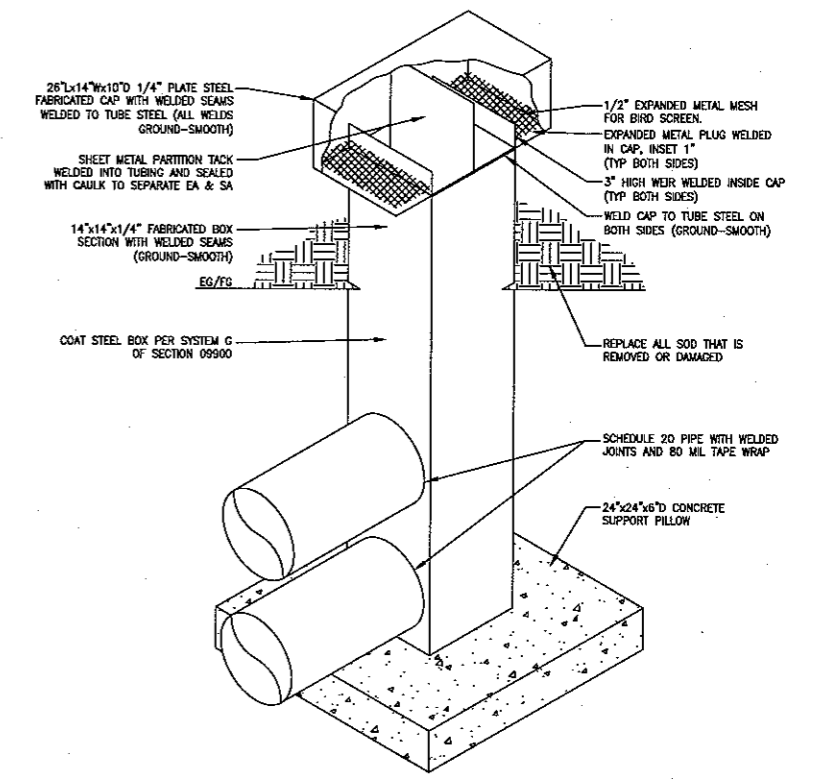
ACCESS OPENING SECTION A
N.T.S. D3

HOT-TAP NOTES:

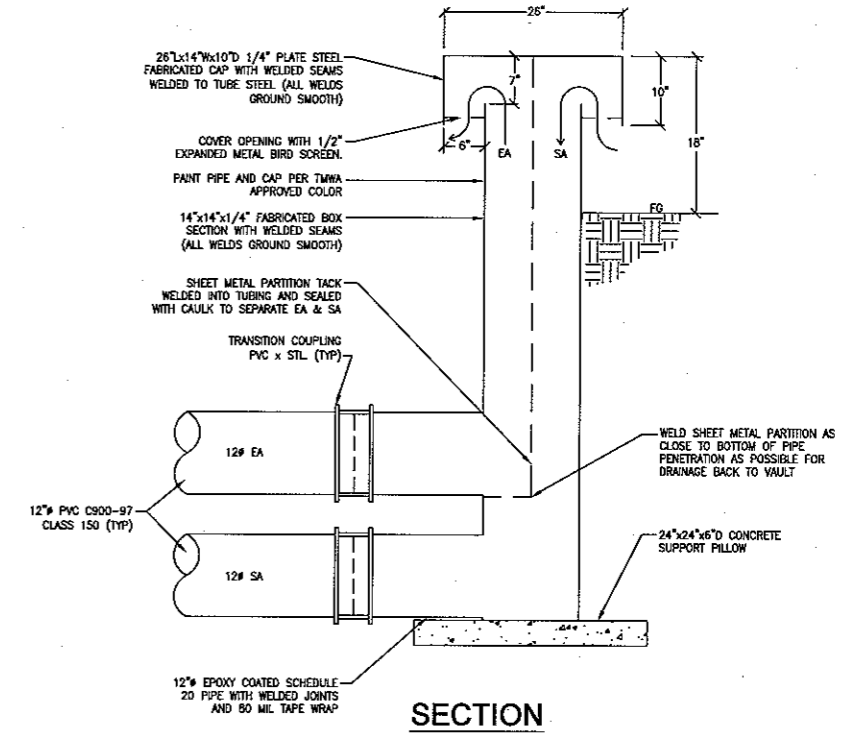
- REQUIRES ONE (1) TAPPING SLEEVE VERIFY PIPE MATERIAL AN OD PRIOR TO ORDERING. TAPPING SLEEVE TO BE ROMAC SST WITH FULL CIRCUMFERENTIAL GASKET, OR TMWA APPROVED EQUAL.
- PROVIDE 2'x2' BY 6" (DEPTH) CONCRETE VALVE PILLOW.
- ALL EXPOSED METAL MUST BE COATED WITH MASTIC.
- REMOVE TEST PLUG AND PRESSURE TEST TAPPING SLEEVE TO MFG'S RECOMMENDATION, APPLY PIPE COMPOUND, REINSERT PLUG.
- UPON SUCCESSFUL PRESSURE TESTING OF TAPPING SLEEVE NOTIFY TMWA REPRESENTATIVE WHO SHALL COORDINATE TO HAVE TAP CONDUCTED BY TMWA CREW, PROVIDE AT LEAST 4 WORKING DAYS NOTICE PRIOR TO THE EXPECTED DAY A TAP IS NEEDED.



HOT-TAP 2
N.T.S. D3



ISOMETRIC VIEW



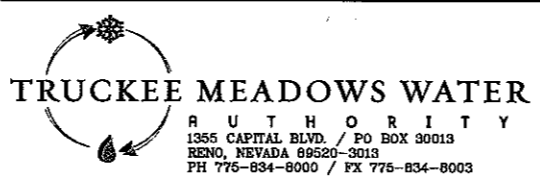
SECTION

DUAL PIPE VAULT INTAKE/EXHAUST VENT HOOD 4
N.T.S. D3

K:\2009-10 CAPITAL PROJECTS\04-188 2010 Pump and PRV Rehab\04-188 Pump Rehab\Design\09\04-188 D3.dwg
Jan 11, 2010 2:55pm

REVISION	DESCRIPTION	BY	APP	DATE
1	ADDENDUM #1 - ADDED DETAIL 4/D3.	SB		1/10

WORK ORDER NO.	04-189
DESIGNED	SWB
DRAWN	SWB
DATE	DECEMBER 2009
CHECKED	CHS/BE
SUBMITTED	
RECOMMENDED	
APPROVED	



NOT REPRODUCIBLE
PROPERTY OF TRUCKEE MEADOWS WATER AUTHORITY. RETURN UPON COMPLETION OF PROJECT (Per Homeland Security Act)

2010 PUMP STATION REHABILITATION CIVIL DETAILS

