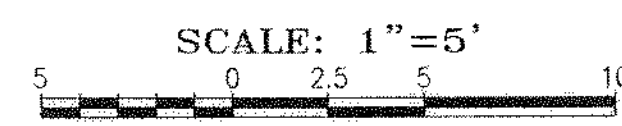
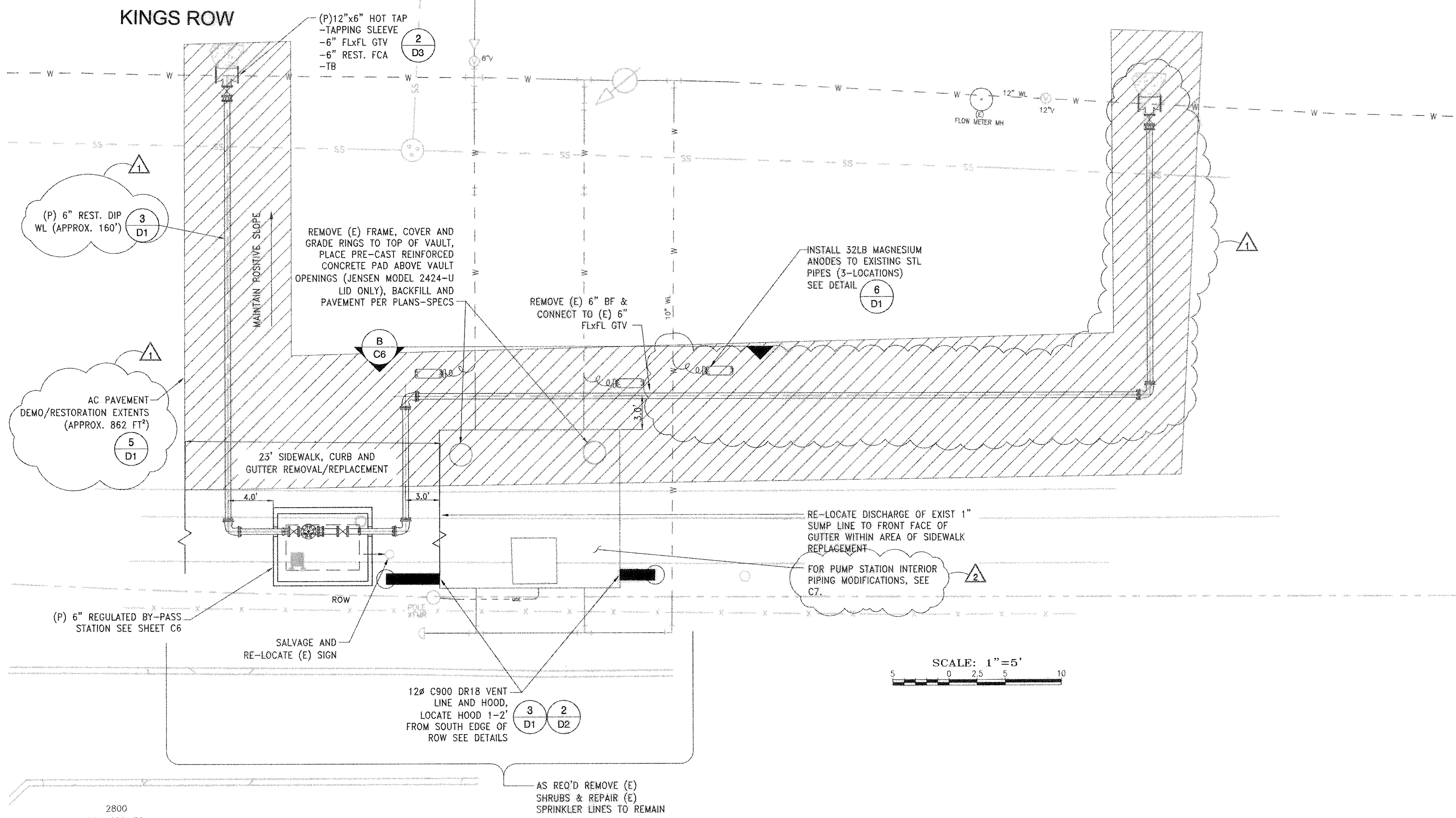


NOTE:
 BENCHMARK: TOP OF BRASS DISK IN SURVEY MONUMENT WELL
 AT CENTERLINE INTERSECTION KINGS ROW AND BRIDGEWOOD DRIVE
 ELEVATION = 4814.44' (NAVD 1988)



KINGS ROW SITE PLAN
 SCALE: 1"=5'

2800
 001-260-78

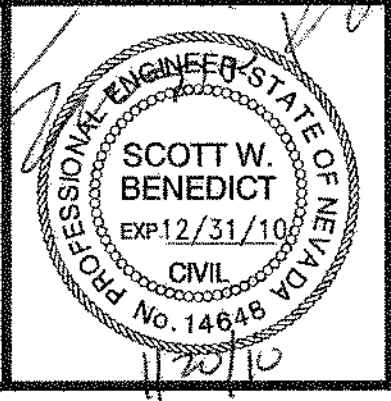
REVISION	DESCRIPTION	BY	APP	DATE
1	ADDENDUM #2 - ADDED HOT TAP AND REVISED CONN. LOCATION TO (E) 12", INCREASED AC RESTORATION AREA AND LENGTH OF DIP.			
2	ADDENDUM #2 - KINGS ROW CIVIL MECHANICAL MODIFICATIONS			
	PLANS MOVED TO SHEET C7-NEW SHEET.			

WORK ORDER NO.	04-189
DESIGNED	SWB
DRAWN	SWB/KJ/TK
DATE	DECEMBER 2009
CHECKED	CHS/BE
SUBMITTED	
RECOMMENDED	
APPROVED	

TRUCKEE MEADOWS WATER AUTHORITY
 1355 CAPITAL BLVD. / PO BOX 30013
 RENO, NEVADA 89520-3013
 PH 775-834-8000 / FX 775-834-8003

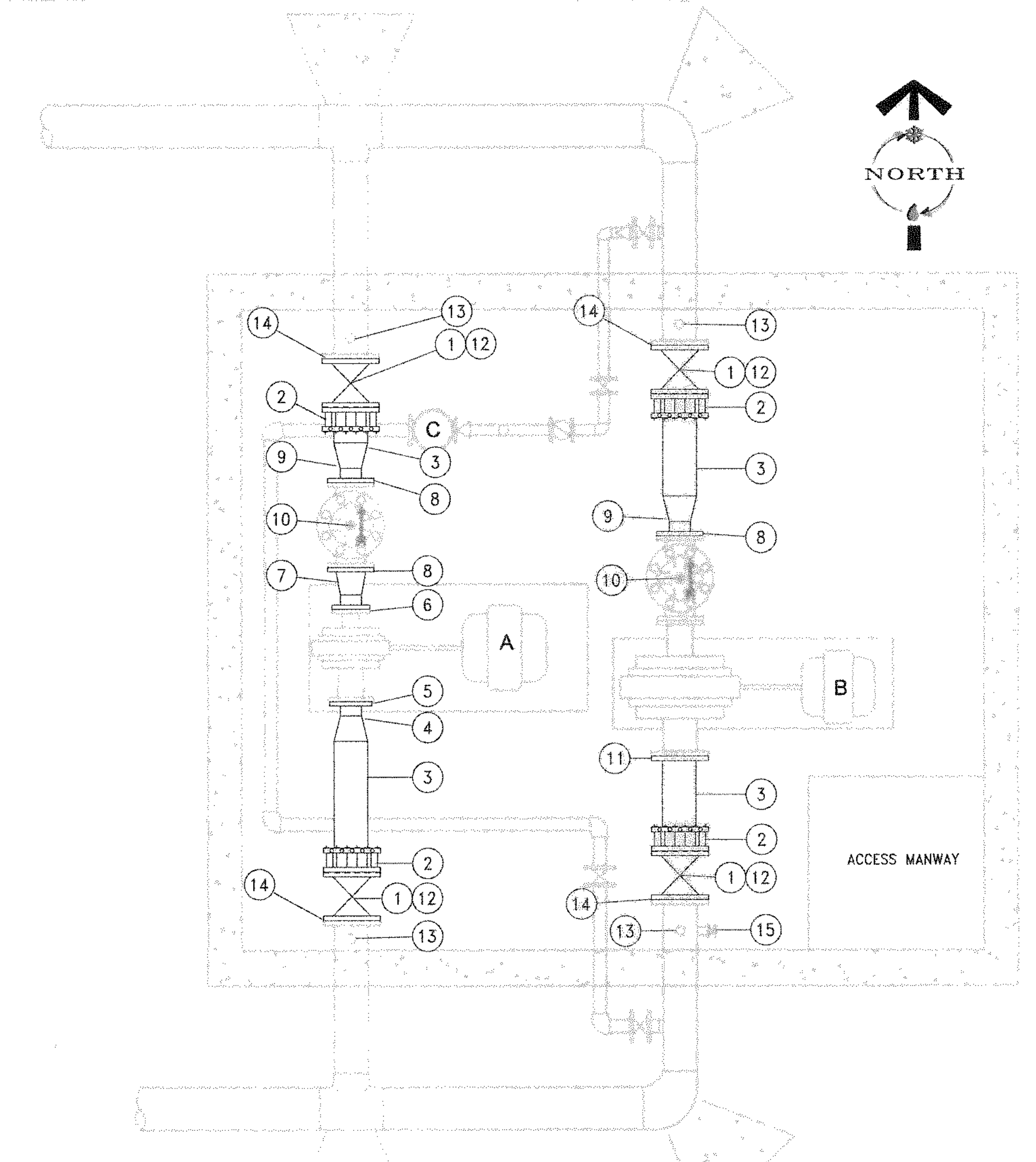
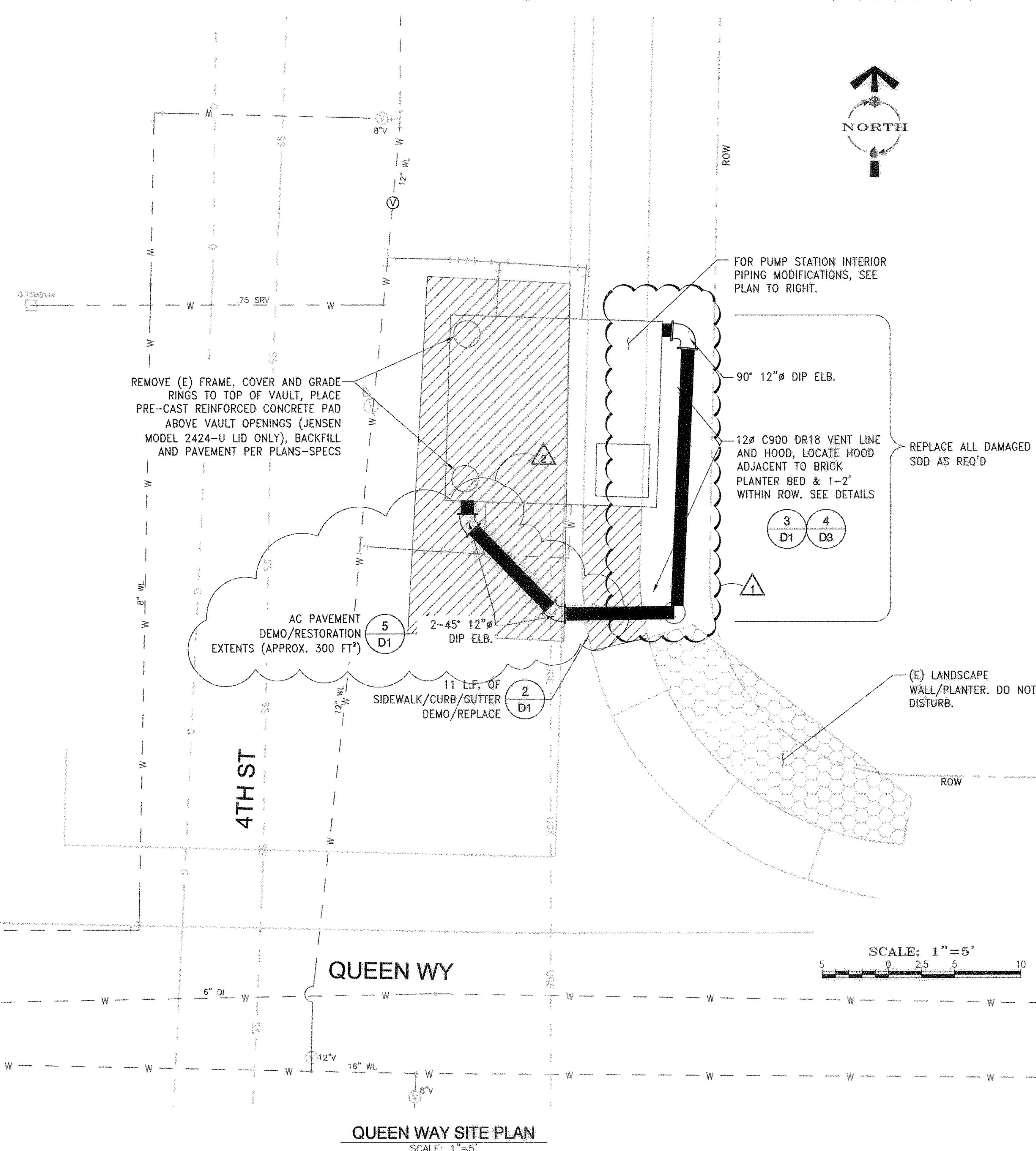
NOT REPRODUCIBLE
 PROPERTY OF TRUCKEE MEADOWS WATER AUTHORITY. RETURN UPON COMPLETION OF PROJECT
 (Per Homeland Security Act)

2010 PUMP STATION REHABILITATION
KINGS ROW 1 PS
CIVIL SITE AND MECHANICAL PLANS



SHEET NUMBER
C2
 9 OF 48

K:\2009-TO CAPITAL PROJECTS\04-189 2010 Pump and PRV Rehab\04-189 Kingsrow C2-addendum 2.dwg
 Jan 20, 2010 11:55am



QUEENS WAY - MATERIAL LIST (SEE NOTE 1)

ITEM NUMBER	QTY	DESCRIPTION
1	4	8" FLXFL GTV W/HANDWHEEL AND PIPE STAND
2	4	8" REST. FCA
3	7.7±	8" SCH 40 STL PIPE, EL&C (ENDS PER PLANS)
4	1	8"x5" SCH 40 STL REDUCER, EL&C
5	1	5" WELD NECK FLANGE
6	1	4" SOWF
7	1	6"x4" SCH 40 STL REDUCER, EL&C
8	3	6" WELD NECK FLANGE
9	2	8"x6" SCH 40 STL REDUCER, EL&C
10	2	6" PRV, FLXFL (RE-INSTALL EXISTING)
11	1	8" SOWF
12	4	PIPE STAND - SEE DETAIL 3/D2
13	4	1-1/2" THREAD-0-LET, 1-1/2"x1" DIELECTRIC BUSHING, 1" BRASS NIPPLE, 1" BALL VALVE. SEE M SHEETS FOR CONTINUATION.
14	4	8" INSULATING FLANGE KITS
15	1	1-1/4"x1" DIELECTRIC BUSHING, 1" BALL VALVE W/1" PLUG.


NOTES FOR SHEET C3:

1. THE MATERIAL LIST PROVIDED IS INTENDED TO BE COMPLETE (LESS INCIDENTAL ITEMS, SEE NOTE 5 OF THE SPECIFICATION SECTION PROVIDED ON SHEET G1) AND SUITABLE FOR THE BASIS OF THE BID. PRIOR TO ORDERING AND FABRICATION THE CONTRACTOR SHALL BE RESPONSIBLE TO VERIFY LENGTHS, DIAMETERS AND FITTING DETAILS.
2. ALL STEEL PIPE AND FITTINGS SHALL BE FABRICATED PRIOR TO COATING PER SECTION 09900 OF THE TECHNICAL SPECIFICATIONS.

K:\2009-10 CAPITAL PROJECTS\04-189 2010 Pump and PRV Rehab\04-189 Pump Rehab\Design\09\04-189 QUEEN WAY C3.dwg
Jan 20, 2010 11:58am

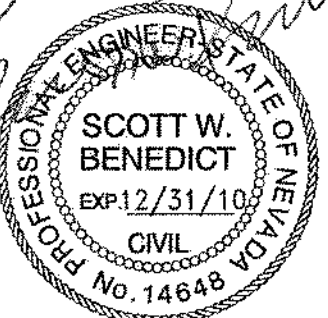
REVISION	DESCRIPTION	BY	APP	DATE
1	ADDENDUM #1	SB		1/10
2	ADDENDUM #2 - REVISED VENT INTAKE INTO VAULT LOCATION, ADDED	SB		1/10
	PIPING AND ELBOW AND INCREASED AC RESTORATION AREA			

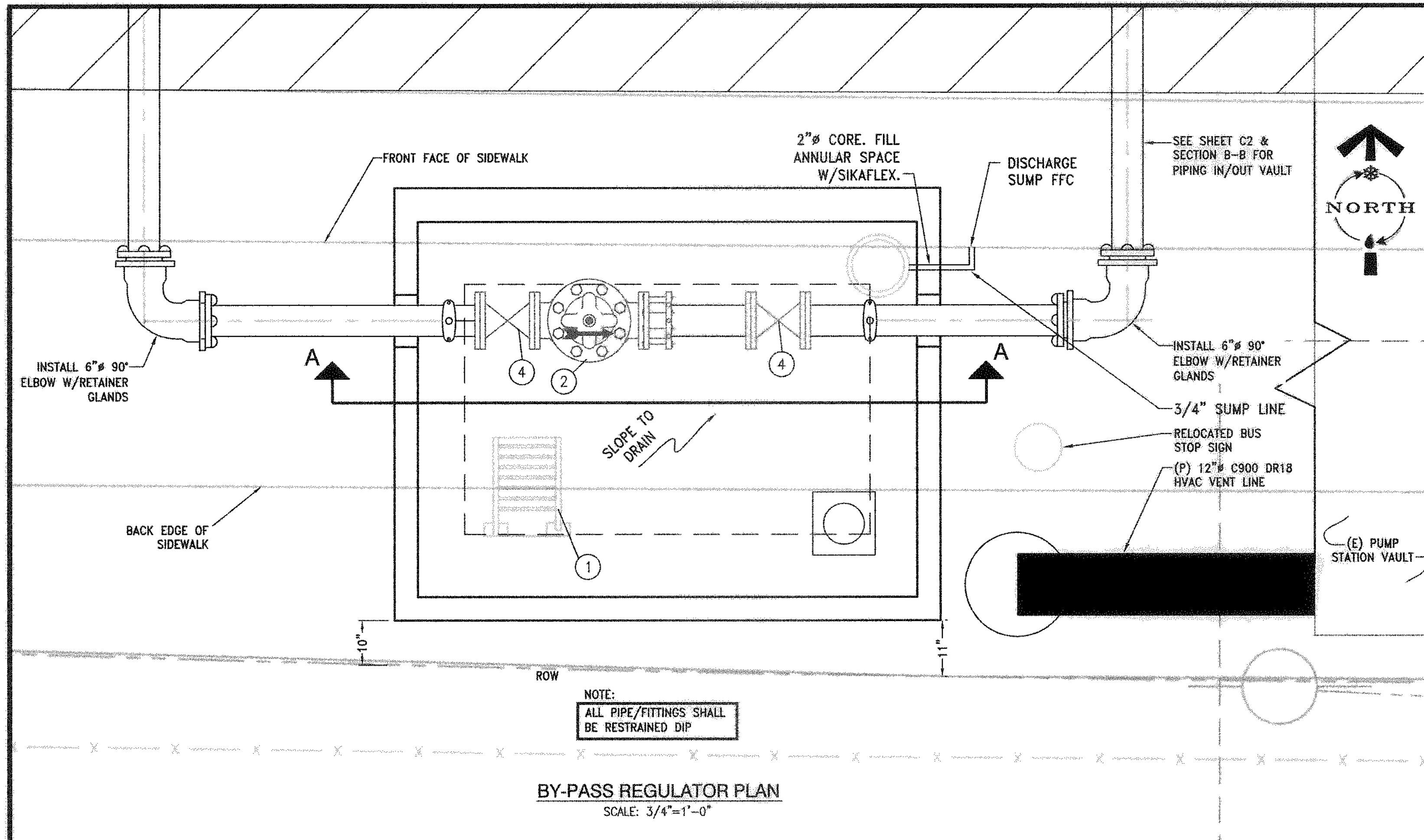
WORK ORDER NO.	04-189
DESIGNED	SWB
DRAWN	
DATE	DECEMBER 2009
CHECKED	CHS/BE
SUBMITTED	WB/KJ
RECOMMENDED	
APPROVED	


TRUCKEE MEADOWS WATER AUTHORITY
 1355 CAPITAL BLVD. / PO BOX 30013
 RENO, NEVADA 89520-3013
 PH 775-834-8000 / FX 775-834-8003

NOT REPRODUCIBLE
 PROPERTY OF TRUCKEE MEADOWS WATER AUTHORITY. RETURN UPON COMPLETION OF PROJECT
 (Per Homeland Security Act)

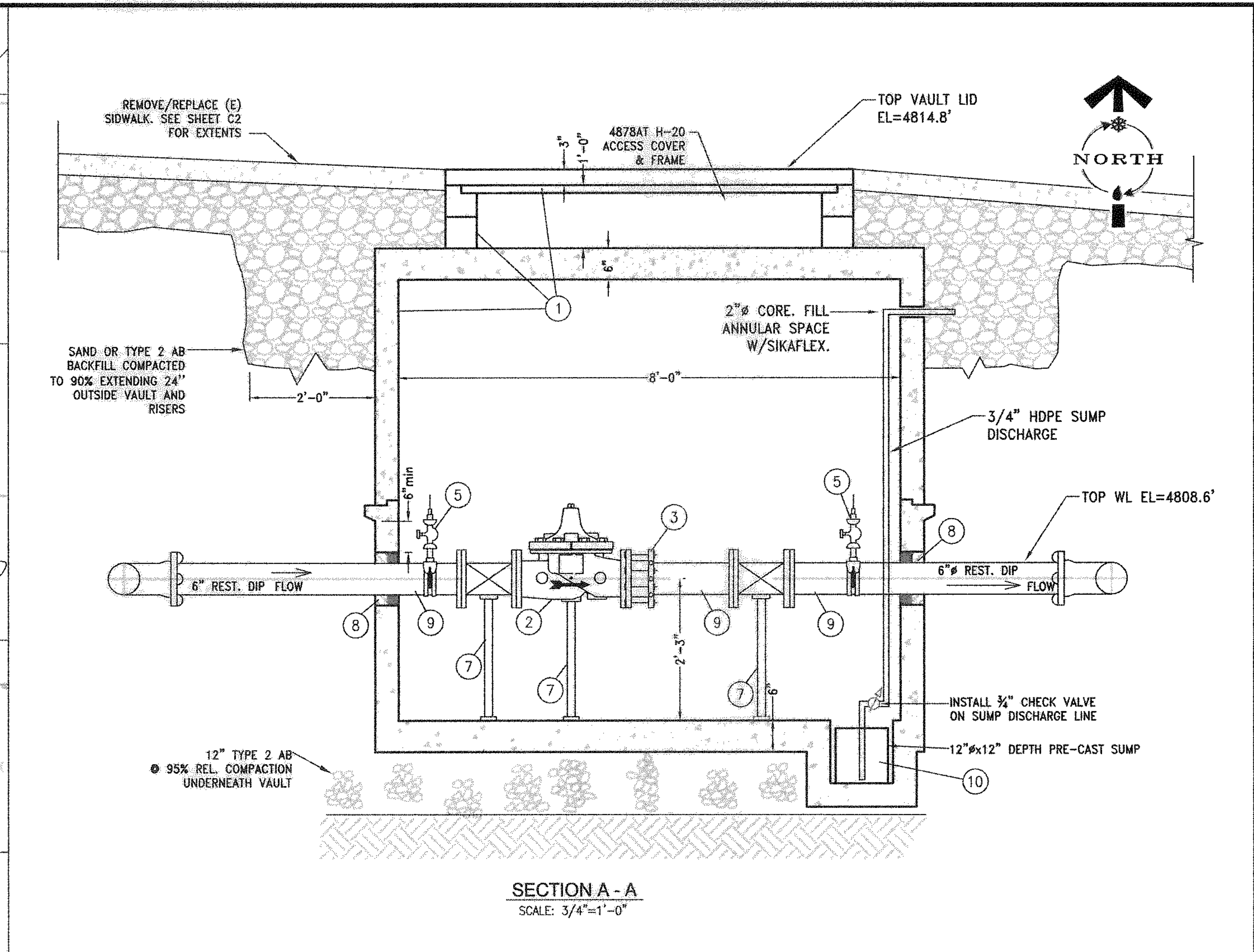
2010 PUMP STATION REHABILITATION
QUEEN WAY PS
CIVIL SITE AND MECHANICAL PLANS





BY-PASS REGULATOR PLAN
SCALE: 3/4"=1'-0"

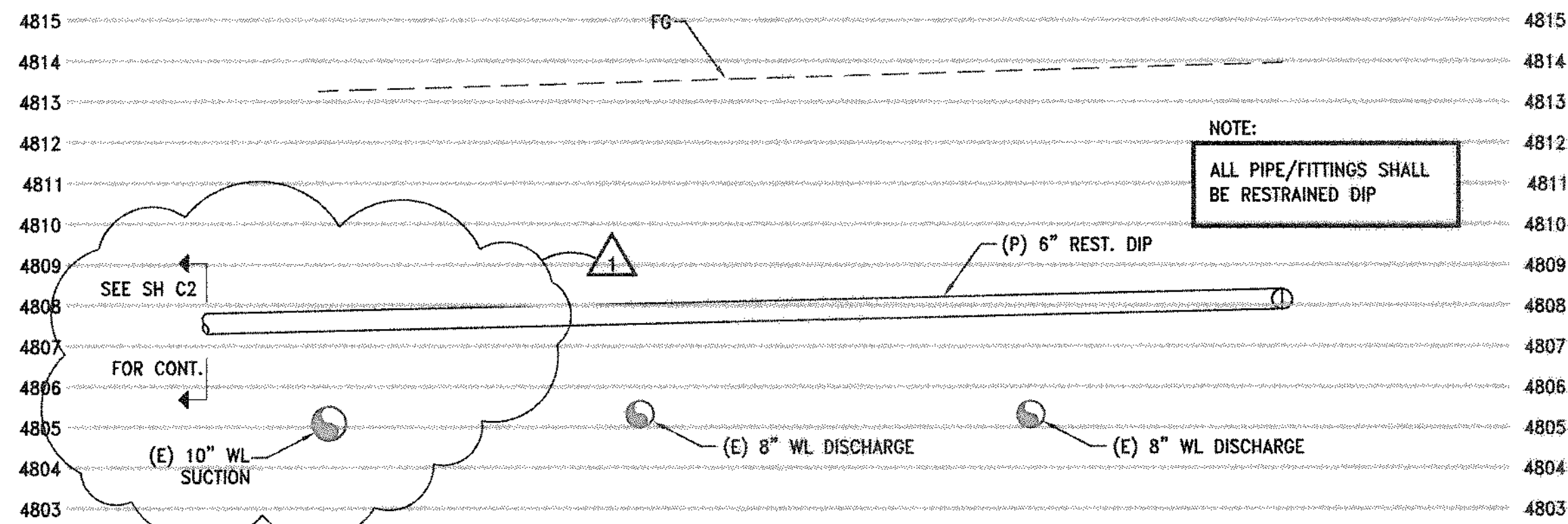
NOTE:
ALL PIPE/FITTINGS SHALL
BE RESTRAINED DIP



SECTION A - A
SCALE: 3/4"=1'-0"

NOTES FOR SHEET C6:

1. THE MATERIAL LIST PROVIDED IS INTENDED TO BE COMPLETE (LESS INCIDENTAL ITEMS, SEE NOTE 5 OF THE SPECIFICATION SECTION PROVIDED ON SHEET G1) AND SUITABLE FOR THE BASIS OF THE BID. PRIOR TO ORDERING AND FABRICATION THE CONTRACTOR SHALL BE RESPONSIBLE TO VERIFY LENGTHS, DIAMETERS AND FITTING DETAILS.
2. SEE ELECTRICAL SHEETS FOR LIGHTING EQUIPMENT & ALARM/CONTROL REQS.



SECTION B-B
SCALE: 3/8"=1'-0"

NOTE:
ALL PIPE/FITTINGS SHALL
BE RESTRAINED DIP

KINGS ROW 1 BY-PASS REGULATOR MATERIAL LIST (SEE NOTE 1)		
NO.	QTY.	DESCRIPTION
1	1	JENSEN PRECAST 687U-7 H-20 VAULT W/ A 12" FLOOR SUMP, 6'Wx8'Lx7'D I.D.
1	1	487BAT H-20 COVER & FRAME ASSEMBLY W/ ADJUSTABLE TORSION SPRING ASSISTED COVER MARKED "TMWA WATER"
1	1	12"W x 120"L REMOVABLE STEEL LADDER MODEL I-3600 W/ LADDER-UP DEVICE (JENSEN-PRECAST), FIELD CUT TO PROPER LENGTH PER TMWA INSPECTOR.
2	2	RS48786 6" CONCRETE RISER (JENSEN PRECAST)
AS REQD:		BIDCO C-56 WG VAULT JOINT SEALANT (AVAILABLE AT JENSEN PRE-CAST IN 14.5' ROLLS)
2	1	6" PRESSURE REDUCING VALVE, CLA-VAL MODEL #90-01-KO B, C, S, KC, GLOBE TYPE, 15 TO 75 PSI SPRING RANGE, CLASS 150, FLG. x FLG., STAINLESS STEEL INTERNAL TRIM AND X101 POSITION INDICATOR (TMWA PROVIDE).
3	1	6" RESTRAINED FCA FOR DIP
4	2	6" FLG. x FLG. GATE VALVE W/ HAND WHEEL, AWWA C-509 OR C-515
5	2	6" SMITH BLAIR 317-076008 SERVICE SADDLE, FUSION BONDED EPOXY COATED, DOUBLE STAINLESS STEEL STRAP WITH 1" F.I.P. TAP, 1"x 3/4" DIELECTRIC BUSHING, 3/4" BRASS ALL THREAD NIPPLE, 3/4" BRONZE BALL VALVE W/ HAND LEVER, 3/4"x 1/4" BRASS BUSHING, 1/4" BRASS PLUG. ALL BRASS FITTINGS SHALL BE "EXTRA HEAVY 250#" RATED.
6	1	12" DRAINAGE SUMP
7	3	2" ADJUSTABLE PIPE SUPPORTS. SEE DETAIL 3/D2.
8	2	CALPICO CSL-SS40 ASSEMBLIES OF EPDM RUBBER (TOTAL OF 7 LINKS PER ASSEMBLY) W/ S.S. BOLTS AND COMPRESSION PLATES FOR 6" DUCTILE IRON THROUGH A 10" VAULT BORE HOLE. SEE DETAIL 4/D2.
9	3	6" FLG. x PE CL350 DIP ~ FACTORY CEMENT-MORTAR LINED INTERIOR W/ ASPHALTIC COATING ON EXTERIOR. LENGTHS OF 4'-7", 1'-9" AND 4'-4".
10	1	1/3 HP SUMP PUMP (TMWA PROVIDE).

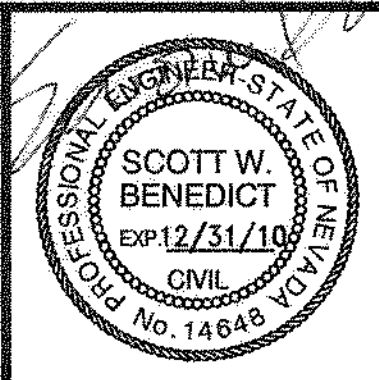
REVISION	DESCRIPTION	BY	APP	DATE
ADDENDUM #2	REVISED POINT OF CONNECTION TO EXISTING 12" SEE SHEET C2 ISSUED IN ADDENDUM 2 FOR PIPE LENGTH/FITTING REQUIREMENTS.	SB		1/10

WORK ORDER NO.	04-189
DESIGNED	SWB
DRAWN	SWB
DATE	DECEMBER 2009
CHECKED	CHS/BE
SUBMITTED	NOV. 09
RECOMMENDED	
APPROVED	

TRUCKEE MEADOWS WATER AUTHORITY
1355 CAPITAL BLVD. / PO BOX 30013
RENO, NEVADA 89520-3013
PH 775-834-8000 / FX 775-834-8003

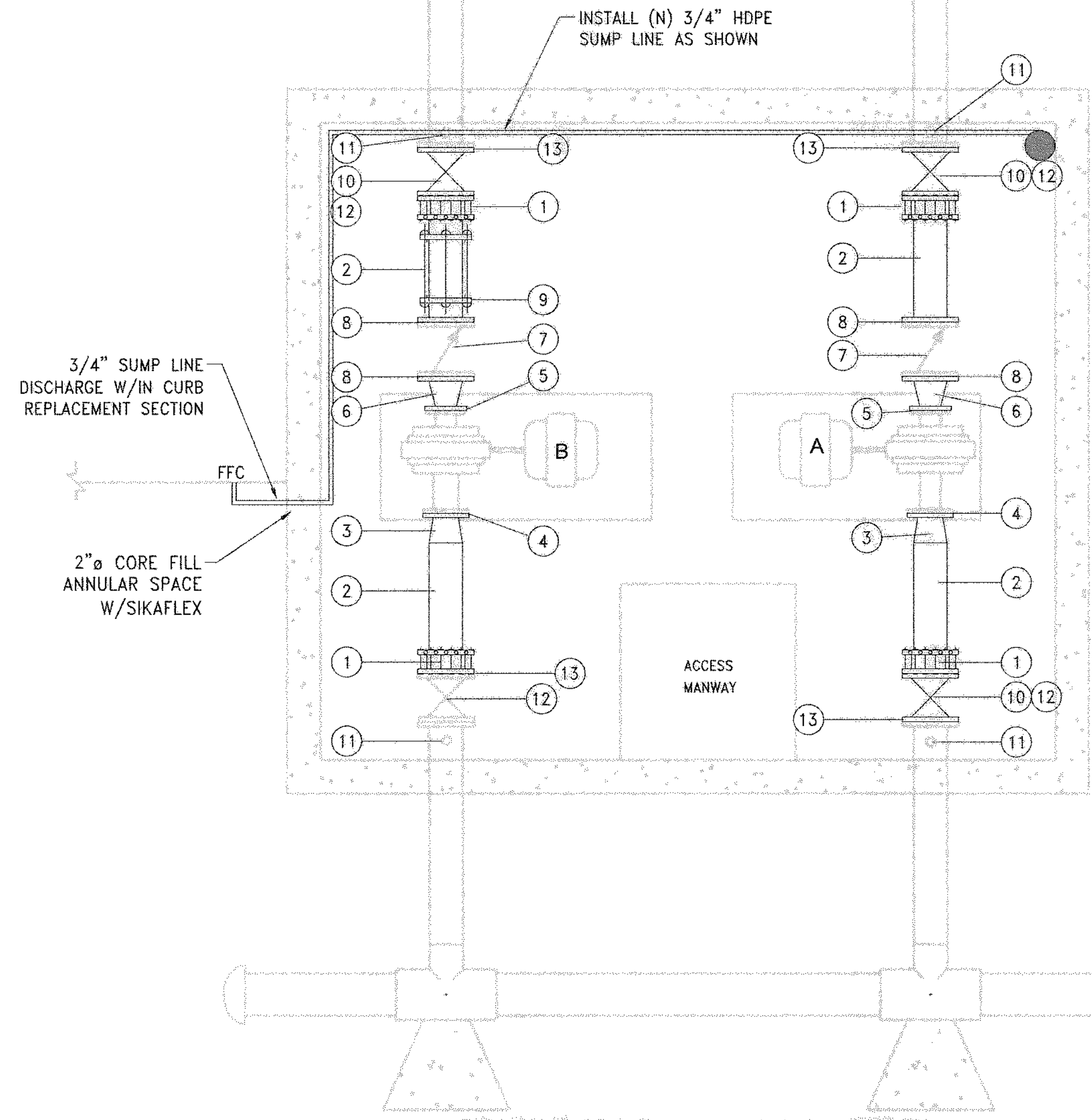
NOT REPRODUCIBLE
PROPERTY OF TRUCKEE MEADOWS WATER AUTHORITY, RETURN UPON COMPLETION OF PROJECT (Per Homeland Security Act)

2010 PUMP STATION REHABILITATION
KINGS ROW #1 PS BY-PASS REGULATOR



SHEET NUMBER
C6
13 OF 48

K:\2009-10-CAPITAL PROJECTS\04-189 2010 Pump and PRV Rehab\04-189 KINGSROW PRV Bypass C6 ADDENDUM 2.dwg Jun 20 2010 12:03pm



KINGS ROW 1 - MATERIAL LIST (SEE NOTE 1)		
ITEM NUMBER	QTY	DESCRIPTION
1	4	8" REST. FCA
2	10'±	8" SCH 40 STL PIPE, EL&C (ENDS PER PLANS)
3	2	8"x6" SCH 40 STL REDUCER, EL&C
4	2	6" SOWF
5	2	5" SOWF
6	2	8"x5" SCH 40 STL REDUCER, EL&C
7	2	8" SILENT CHECK VALVE (RE-INSTALL EXISTING)
8	4	8" SOWF
9	1	8" REST. COUPLING (EBAA SERIES 3800, OR APPROVED EQUAL)
10	3	8" FLxFL GTV W/HANDWHEEL
11	4	1-1/2" THREAD-O-LET, 1-1/2"x1" DIELECTRIC BUSHING, 1" BRASS NIPPLE, 1" BALL VALVE. SEE M SHEETS FOR CONTINUATION.
12	4	PIPE SUPPORT - SEE DETAIL 3/D2.
13	4	8" INSULATING FLANGE KIT

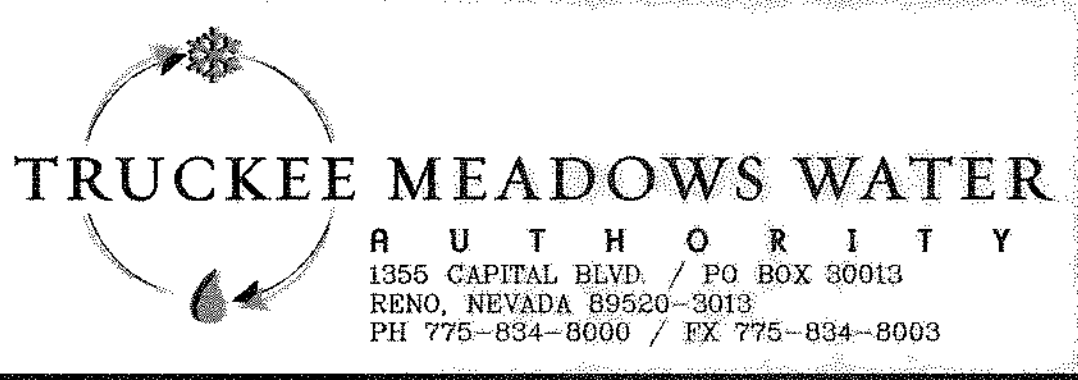
NOTES FOR SHEET C7:

1. THE MATERIAL LIST PROVIDED IS INTENDED TO BE COMPLETE (LESS INCIDENTAL ITEMS, SEE NOTE 5 OF THE SPECIFICATION SECTION PROVIDED ON SHEET G1) AND SUITABLE FOR THE BASIS OF THE BID. PRIOR TO ORDERING AND FABRICATION THE CONTRACTOR SHALL BE RESPONSIBLE TO VERIFY LENGTHS, DIAMETERS AND FITTING DETAILS.
2. ALL STEEL PIPE AND FITTINGS SHALL BE FABRICATED PRIOR TO COATING PER SECTION 09900 OF THE TECHNICAL SPECIFICATIONS.

K:\2009-10-CAPITAL PROJECTS\04-189 2010 Pump and PRV Rehab\04-189 Kingsrow Pump Rehab\04-189 Kingsrow C2-addendum 2.dwg
Jan 20, 2010 11:57am

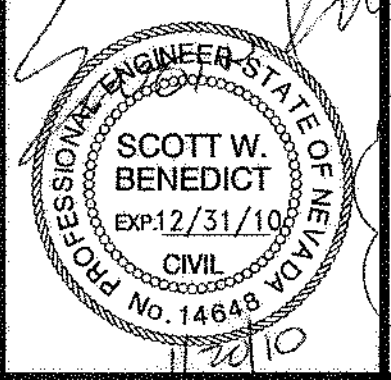
REVISION	DESCRIPTION	BY	APP	DATE
1	ADDENDUM #2 - KINGS ROW CIVIL MECHANICAL MODIFICATIONS			
2	PLANS MOVED TO SHEET C7-NEW SHEET. TOTAL SHEET COUNT IS 49.			

WORK ORDER NO. 04-189
 DESIGNED: SWB
 DRAWN: SWB
 DATE: DECEMBER 2009
 CHECKED: CHS/BE
 SUBMITTED:
 RECOMMENDED:
 APPROVED:



NOT REPRODUCIBLE
 PROPERTY OF TRUCKEE MEADOWS WATER AUTHORITY. RETURN UPON COMPLETION OF PROJECT (Per Homeland Security Act)

2010 PUMP STATION REHABILITATION
KINGS ROW 1 PS CIVIL MECHANICAL PLANS



SHEET NUMBER
C7
 14 OF 48