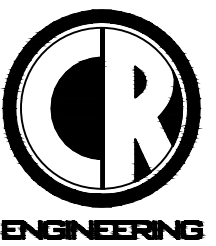


KEY PLAN

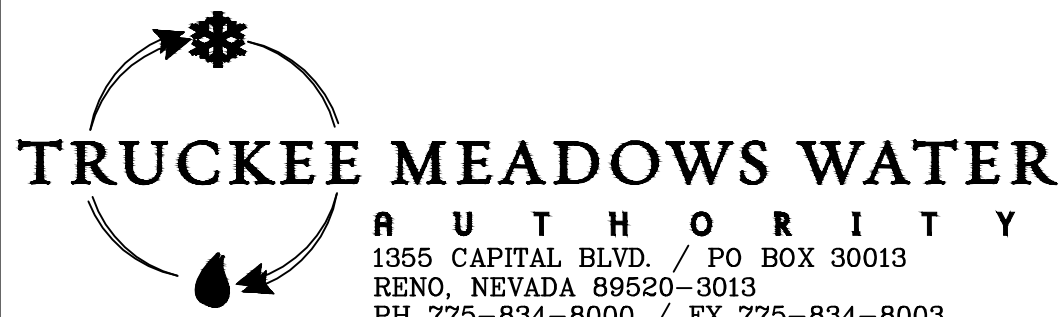
PLUMBING MAIN LEVEL DEMOLITION PLAN
SCALE: 1/4"=1'-0" **A**
P1.3



5434 LONGLEY LANE
RENO, NEVADA 89511
PHONE: (775) 826-1919
FAX: (775) 826-1918
PROJECT NO: 077313

REVISION	DESCRIPTION	BY	APP	DATE
1	ADDENDUM #1	TJD	CLR	9/4/13

WORK ORDER NO. **11-0006**
DESIGNED **TJD**
DRAWN **DAB**
DATE **AUGUST 2, 2013**
CHECKED **CLR**
SUBMITTED
RECOMMENDED
APPROVED



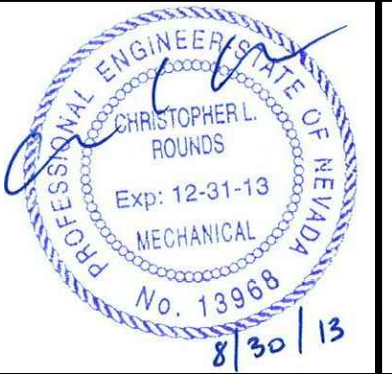
NOT REPRODUCIBLE
PROPERTY OF
TRUCKEE MEADOWS
WATER
AUTHORITY. RETURN
UPON
COMPLETION OF
PROJECT
(Per Homeland Security Act)

**TRUCKEE MEADOWS WATER AUTHORITY
GLENDALE WATER TREATMENT PLANT
CONTROL ROOM MODERNIZATION**

**PLUMBING MAIN LEVEL DEMOLITION
PLAN**
FINAL - FOR PLAN REVIEW SUBMITTAL



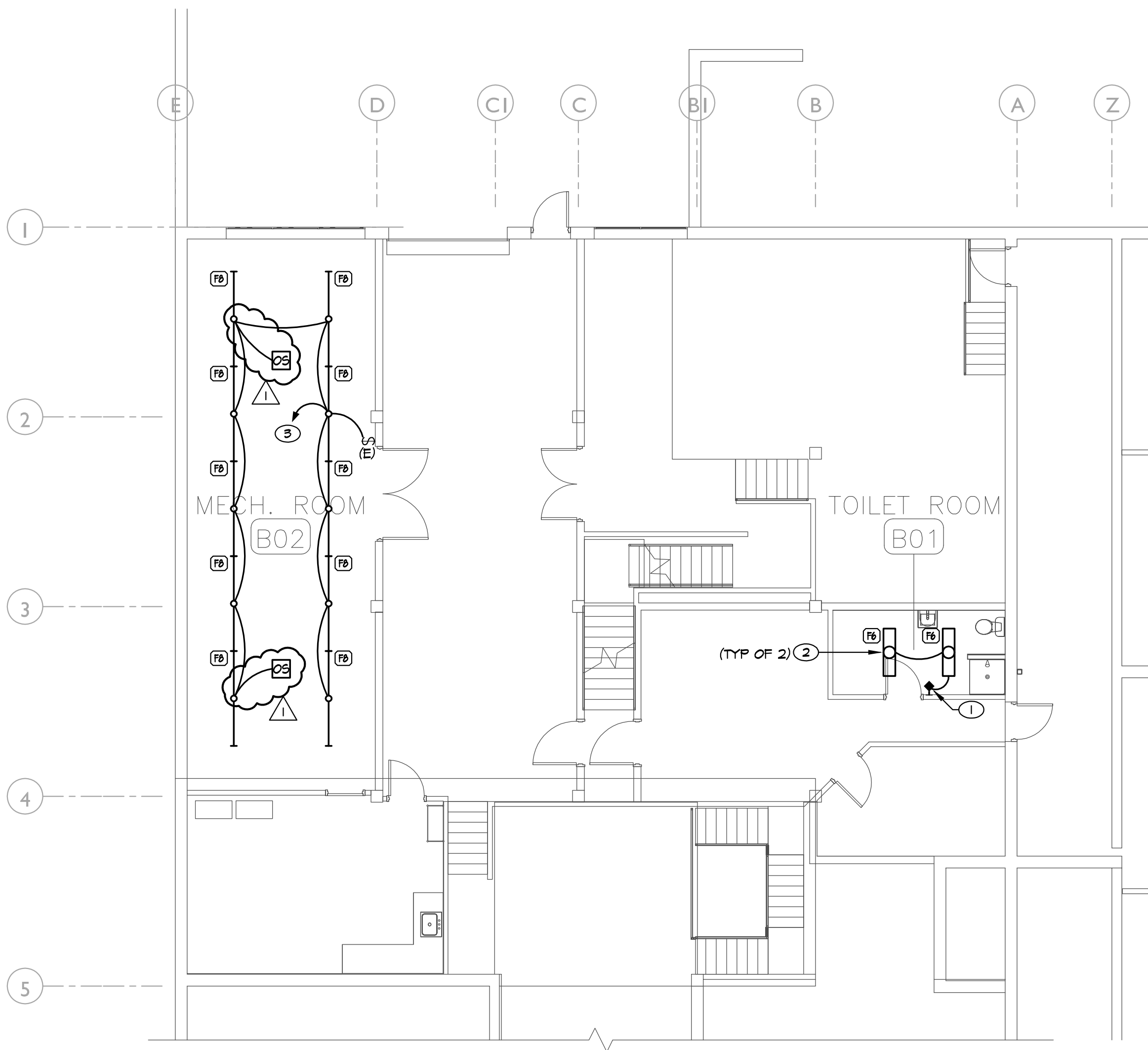
3376 La Veaga Court (775) 233-1222
Sparks, Nevada 89431 (775) 331-9484



SHEET NUMBER

P1.3

61 OF 94



GENERAL NOTES

- (E) AND DASHED LINES INDICATE EXISTING EQUIPMENT, (R) AND DASHED LINES INDICATE RELOCATED EQUIPMENT, (N) AND SOLID LINES INDICATE NEW EQUIPMENT UNLESS NOTED OTHERWISE.
- CONTRACTOR SHALL BE RESPONSIBLE FOR COORDINATING FINAL FIXTURE LOCATIONS, ABOVE-CEILING HOUSING CLEARANCES, ETC. WITH MECHANICAL, PLUMBING, SPRINKLER CONTRACTOR AND OTHER TRADES PRIOR TO ROUGH-IN.
- CONTRACTOR IS RESPONSIBLE FOR RECONNECTING EXISTING LIGHT FIXTURES DISCONNECTED DURING DEMOLITION PHASE. ALL EXISTING SYSTEMS SHALL BE IN WORKING CONDITION UPON COMPLETION OF CONSTRUCTION.
- REUSE EXISTING CONDUIT SYSTEMS FOR NEW WORK TO EXTENT POSSIBLE WHERE EXISTING LIGHT FIXTURES, DEVICES, ETC. ARE REMOVED DURING DEMOLITION PHASE.

SHEET NOTES

- LINE VOLTAGE PASSIVE-INFRARED AUTOMATIC WALL SWITCH EQUAL TO SENSOR SWITCH #ASD-FDT-2P DUAL RELAY. SEE DETAIL D/ES.1 FOR WIRING DIAGRAM. RE-USE EXISTING BOX AND PROVIDE NEW COVER PLATE AS REQUIRED.
- CONTRACTOR SHALL PROVIDE AND INSTALL NEW LIGHT FIXTURE IN EXISTING LOCATION AS SHOWN. MAINTAIN EXISTING CIRCUITING AND CONNECT AS REQUIRED.
- CONNECT TO EXISTING LIGHTING CIRCUIT MADE AVAILABLE FROM DEMOLITION.

A
E3.0 LIGHTING PLAN - BASEMENT
SCALE: 1/8" = 1'-0"

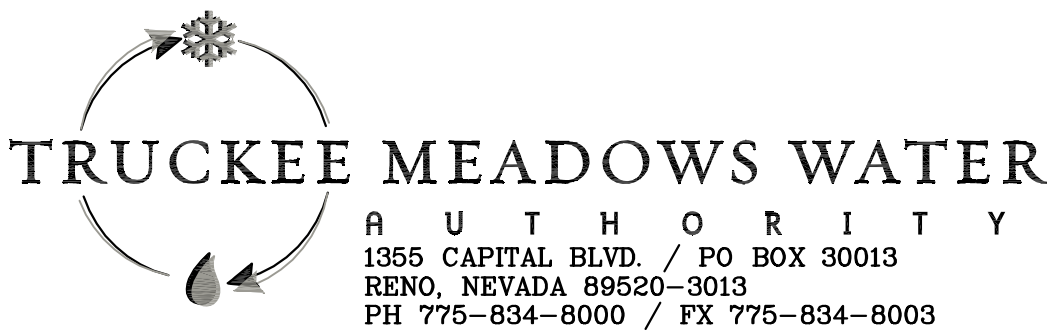


PK Electrical, Inc.

681 Sierra Rose Dr., Ste. B • Reno, Nevada 89511
p. 775.826.9010 • f. 775.826.9030 • pkelectrical.com
12153

REVISION	DESCRIPTION	BY	APP	DATE
1	ADDENDUM #1	CWH	JEG	9/4/13

WORK ORDER NO. **11-0006**
DESIGNED **CWH/BC**
DRAWN **SG**
DATE **5 AUG 2013**
CHECKED **JEG**
SUBMITTED
RECOMMENDED
APPROVED



NOT REPRODUCIBLE
PROPERTY OF
TRUCKEE MEADOWS
WATER
AUTHORITY. RETURN
UPON
COMPLETION OF
PROJECT
(Per Homeland Security Act)

**TRUCKEE MEADOWS WATER AUTHORITY
GLENDALE WATER TREATMENT PLANT
CONTROL ROOM MODERNIZATION**

Lighting Plan - Basement

FINAL - FOR PLAN REVIEW SUBMITTAL



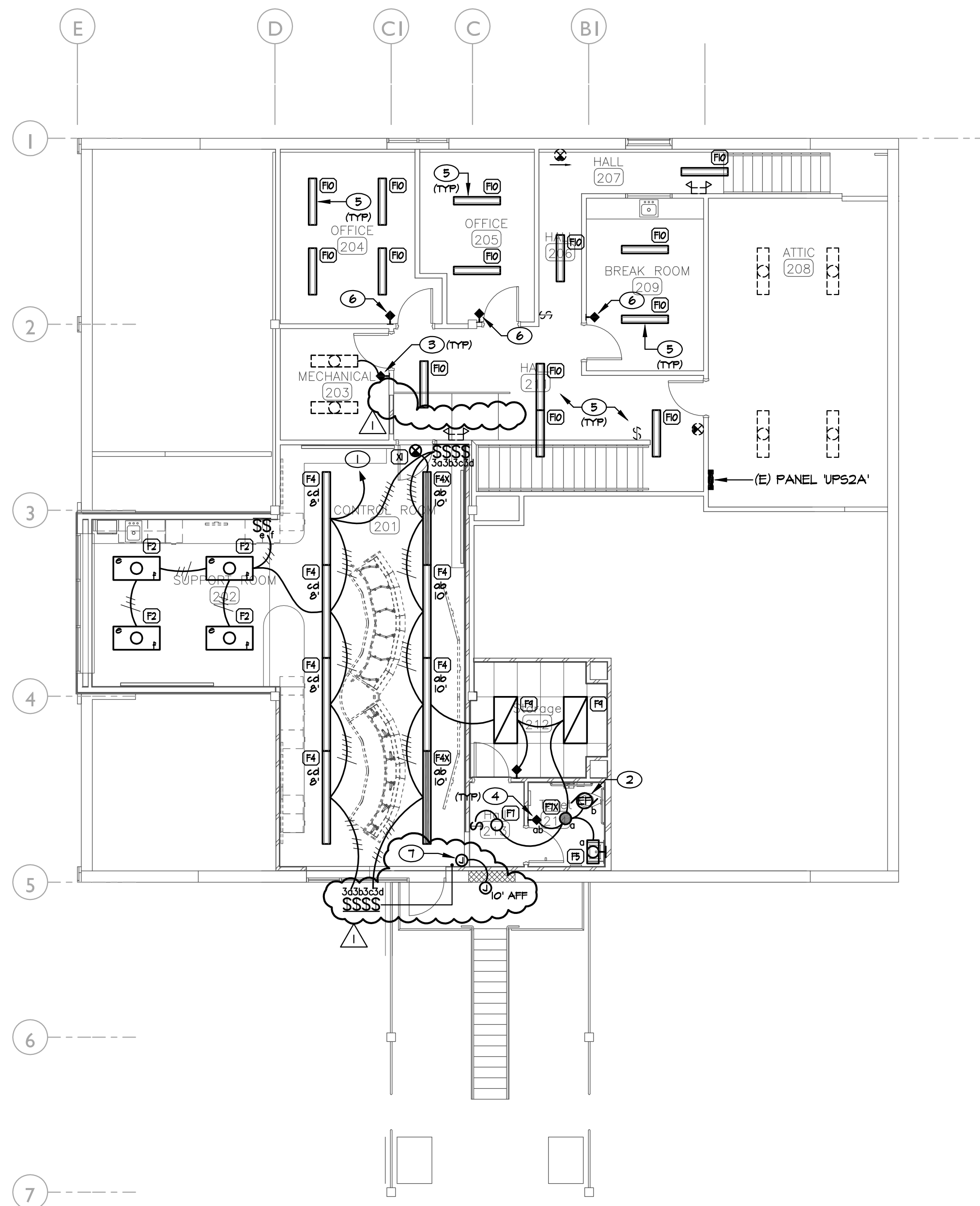
3376 La Veaga Court (775) 233-1222
Sparks, Nevada 89431 (775) 331-9484



SHEET NUMBER

E3.0

79 OF 94



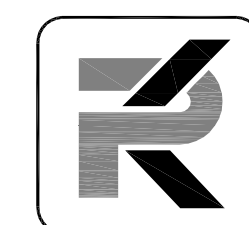
A
E3.2 LIGHTING PLAN - SECOND FLOOR
SCALE: 1/8" = 1'-0"

GENERAL NOTES

- (E) AND DASHED LINES INDICATE EXISTING EQUIPMENT, (R) AND DASHED LINES INDICATE RELOCATED EQUIPMENT, (N) AND SOLID LINES INDICATE NEW EQUIPMENT UNLESS NOTED OTHERWISE.
- LIGHT FIXTURES DESIGNATED AS "EMERGENCY" SHALL BE WIRED TO OPERATE WITH LOCAL SWITCHING UNDER NORMAL POWER CONDITIONS AND SHALL OPERATE VIA EMERGENCY BATTERY PACK UPON LOSS OF BUILDING UTILITY POWER ONLY, UNLESS NOTED OTHERWISE.
- EXIT SIGNS SHALL BE WIRED AHEAD OF LOCAL SWITCHING FOR CONTINUOUS OPERATION. EXIT SIGNS SHALL BE WALL-MOUNTED ABOVE DOORS WHERE PRACTICAL. PROVIDE ADDITIONAL EXIT SIGNS AS NECESSARY FOR APPROVAL BY THE AUTHORITY HAVING JURISDICTION, PER ARCHITECT'S FINAL PATH OF EGRESS / EXITING PLAN.
- PROVIDE MULTIPLE-GANG FACEPLATES AS NECESSARY WHERE TWO OR MORE LIGHT SWITCHES ARE INDICATED IN A COMMON LOCATION. SINGLE-GANG FACEPLATES FOR A GROUP OF LIGHT SWITCHES ARE NOT PERMITTED.
- CONTRACTOR SHALL BE RESPONSIBLE FOR COORDINATING FINAL FIXTURE LOCATIONS, ABOVE-CEILING HOUSING CLEARANCES, ETC. WITH MECHANICAL, PLUMBING, SPRINKLER CONTRACTOR AND OTHER TRADES PRIOR TO ROUGH-IN.

SHEET NOTES

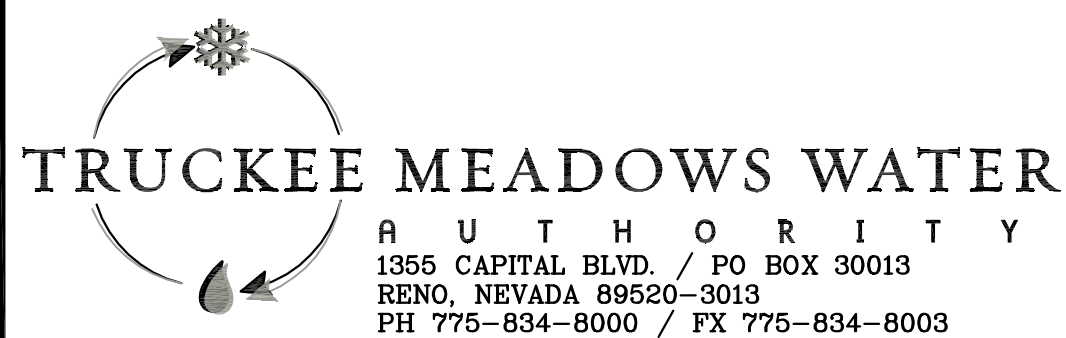
- UTILIZE EXISTING LIGHTING CIRCUIT MADE AVAILABLE FROM DEMOLITION. PRIOR TO CONNECTION, FIELD VERIFY LOAD AND SPARE CAPACITY ON CIRCUIT.
- REFER TO POWER PLAN ON SHEET E4.2 FOR ADDITIONAL INSTALLATION REQUIREMENTS.
- LINE VOLTAGE PASSIVE-INFRARED AUTOMATIC WALL SWITCH EQUAL TO SENSOR SWITCH #ASD-PDT SINGLE RELAY. SEE DETAIL D/E3.1 FOR WIRING DIAGRAM.
- LINE VOLTAGE PASSIVE-INFRARED AUTOMATIC WALL SWITCH EQUAL TO SENSOR SWITCH #ASD-PDT-2P DUAL RELAY. SEE DETAIL E/E3.1 FOR WIRING DIAGRAM.
- CONTRACTOR SHALL REPLACE EXISTING FIXTURE WITH NEW. MAINTAIN EXISTING LOCATIONS AND CIRCUITING. SEE FIXTURE SCHEDULE ON SHEET E0.2 FOR NEW FIXTURE TYPE.
- PROVIDE NEW SWITCH IN EXISTING BOX AND RECONNECT TO EXISTING CIRCUITING WITHIN SPACE. SEE SHEET NOTE 3, THIS SHEET FOR REPLACEMENT SWITCH TYPE.
- PROVIDE AND INSTALL (3) 1-GANG SWITCH PROVISIONS FOR FUTURE USE. STUB (2) 1" CONDUIT ABOVE HALL 213 CEILING AND ROUTE CONDUIT TO SURFACE MOUNT J-BOX ABOVE FILTER ROOM MEZZANINE. PROVIDE (1) MULTI-GANG J-BOX AND SWITCH-PLATE AS REQUIRED. PROVIDE BLANK COVERS AND INSERTS AS REQUIRED.



PK Electrical, Inc.
681 Sierra Rose Dr., Ste. B • Reno, Nevada 89511
p. 775.826.9010 • f. 775.826.9030 • pkelectrical.com
12153

REVISION	DESCRIPTION	BY	APP	DATE
1	ADDENDUM #1	CWH	JEG	9/4/13

WORK ORDER NO. **11-0006**
DESIGNED **CWH/BC**
DRAWN **SG**
DATE **5 AUG 2013**
CHECKED **JEG**
SUBMITTED
RECOMMENDED
APPROVED



TRUCKEE MEADOWS WATER AUTHORITY
1355 CAPITAL BLVD. / PO BOX 30013
RENO, NEVADA 89520-3013
PH 775-834-8000 / FX 775-834-8003

NOT REPRODUCIBLE
PROPERTY OF
TRUCKEE MEADOWS
WATER
AUTHORITY. RETURN
UPON
COMPLETION OF
PROJECT
(Per Homeland Security Act)

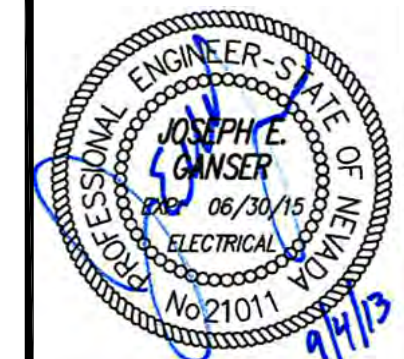
TRUCKEE MEADOWS WATER AUTHORITY GLENDALE WATER TREATMENT PLANT CONTROL ROOM MODERNIZATION

Lighting Plan - Second Floor

FINAL - FOR PLAN REVIEW SUBMITTAL



3376 La Veaga Court (775) 233-1222
Sparks, Nevada 89431 (775) 331-9484



SHEET NUMBER

E3.2

81 OF 94