

1355 Capital Blvd. • P.O. Box 30013 • Reno, NV 89520-3013  
P 775.834.8080 • F 775.834.8003

## **Addendum No. 2**

### **BRAVO AVENUE INTERTIE PROJECT**

PWP Bid No. WA-2014-113  
March 11, 2014

The following information, clarifications, changes and modifications are by reference incorporated into the bid documents for the above referenced project. Any work item or contract provision not changed or modified will remain in full force and effect. The bid date and time and construction schedule remain the same.

This Addendum contains questions and responses, items of clarification and plan and document attachments.

#### **QUESTIONS AND RESPONSES**

**Question No. 1:** Detail D/C1: Please provide the center line distance between the two existing vertical pipe risers.

**Response to Question No. 1:** The centerline distance between the vertical risers is approximately 13.5 feet. The contractor is required to field verify exact dimensions.

**Question No. 2:** Detail B/C2; Blow-Off Valve Assembly next to the Bravo PRV. The drawing in this detail shows one (1) 8" gate valve on the main line at the BOV, but detail B/D7 shows two (2) 8" gate valves. Please clarify.

**Response to Question No. 2:** The number of valves shown on detail B/C2 is correct; the valve inside the PRV vault can be used to isolate flow to the east.

**Question No. 3:** Is all trench backfill per Detail A/D4 or can native backfill be used instead of base outside of roadways?

**Response to Question No. 3:** All trench backfill in all areas shall be per Detail A/D4. No native material is allowed for bedding, fill, or backfill on the project.

#### **CLARIFICATIONS**

**Clarification Item 1:** Reference the PRV specifications/descriptions on Sheet C2 & C3: Delete optional feature "F".

**Clarification Item 2:** Sheet C3 – Add the following paragraph to the “Well #7 PRV” specifications/description.

“ANSI 150# class flanges are acceptable for the PRV if the valve manufacturer provides written certification that the valve and all its components can be tested up to a pressure of 275 PSI. If ANSI 150# class flanges are provided, the fusion epoxy lined & coated steel pipe in the Well #7 PRV may be changed to ductile iron pipe if the contractor prefers. Butterfly valves within the vault can also be changed to ANSI 150# class provided they meet the required 275 psi test pressure. All valves, piping, fittings, accessories, components, etc. still must meet the 275 psi pressure rating and the contractor is required to coordinate the mating of all flanges.”

**Clarification Item 3:** Reference revised Sheet D1 – Details A/D1, B/D1, and C/D1 have been replaced in their entirety with recently updated Public Works Standard details.

**Clarification Item 4:** Reference revised Sheet D3 – Details C/D3 and D/D3 have been replaced in their entirety.

**Clarification Item 5:** Construction Water – Construction water for this project will be available for the contractor at no charge. The water will be available within Lemmon Valley. Water trucks must have an approved air-gap. The Washoe County inspector will identify the specific location when the job begins. The contractor shall be required to provide any necessary BMPs at the fill station to prevent erosion and to prevent tracking of mud onto paved areas.

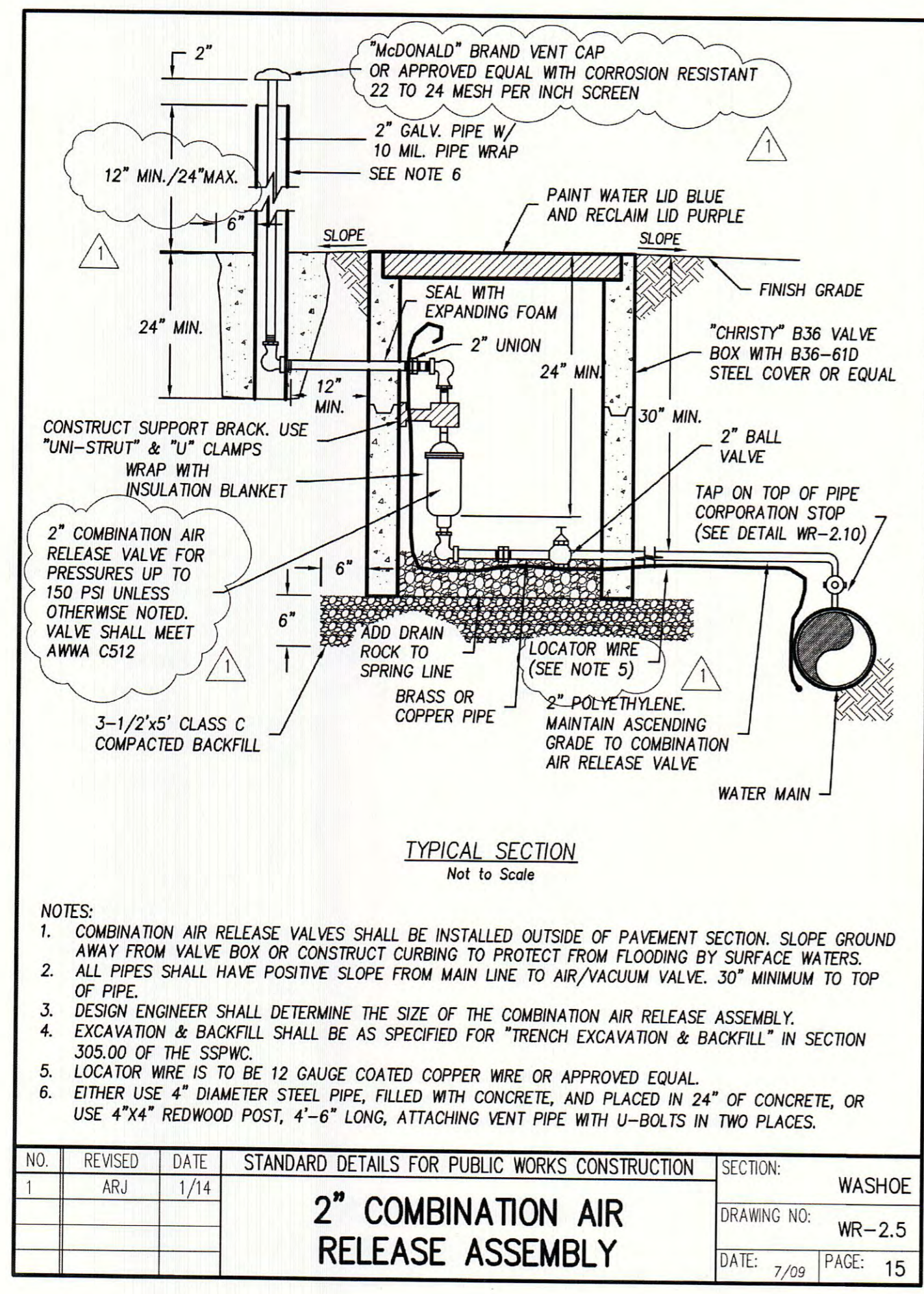
**Clarification Item 6:** Addendum 1 – where Addendum 1 states “I”, in questions and responses 1, 2, and 3 it should state “existing”.

**Clarification Item 7:** TMWA is paying for the compaction testing, as specified in Technical Specification 02225.1.4.

## **ATTACHMENTS**

1. Plan Sheets – Revised Sheet No. D1 and No. D3.

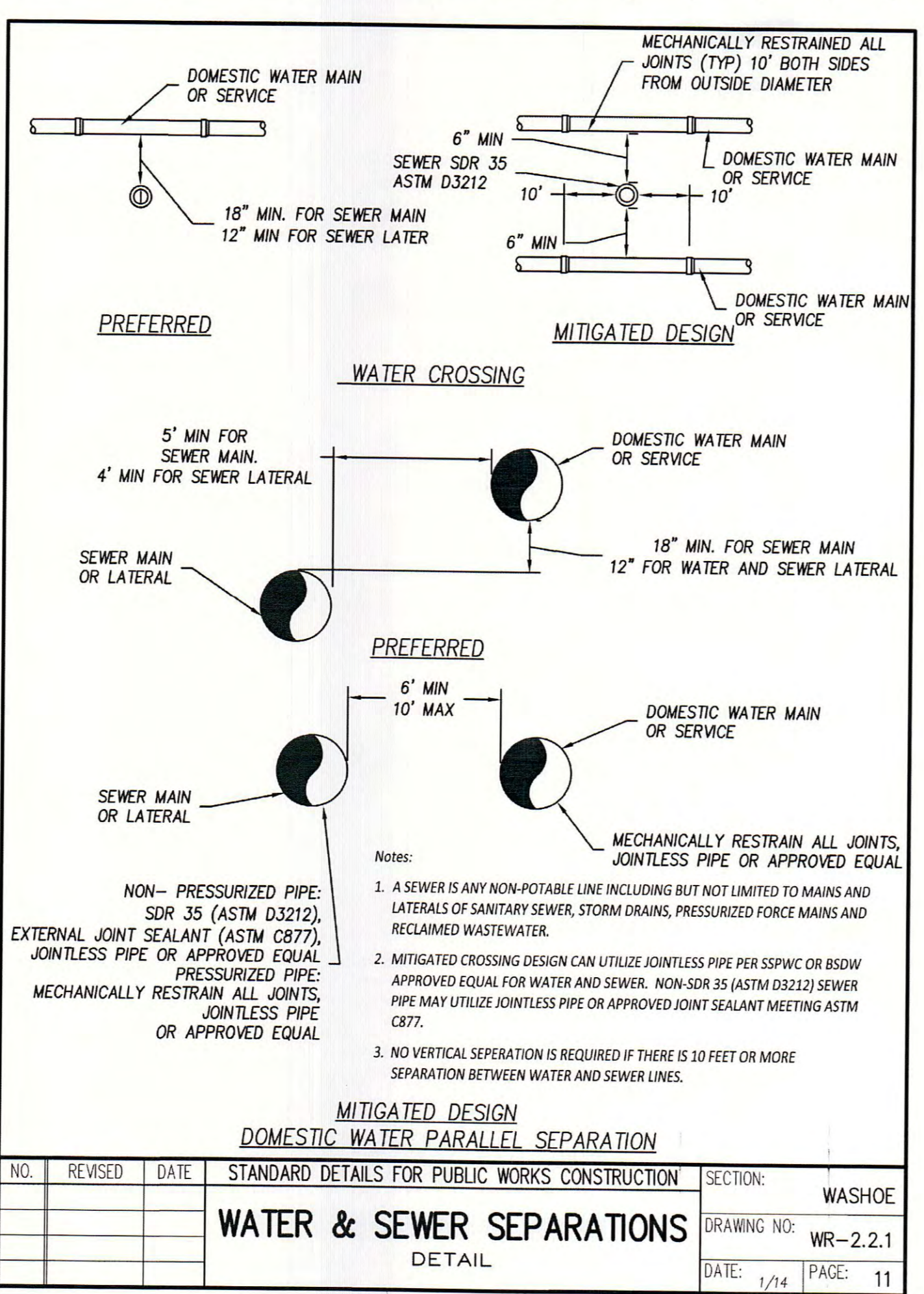




NO.	REVISED	DATE	STANDARD DETAILS FOR PUBLIC WORKS CONSTRUCTION	SECTION:
1	ARJ	1/14		WASHOE

**2" COMBINATION AIR RELEASE ASSEMBLY**

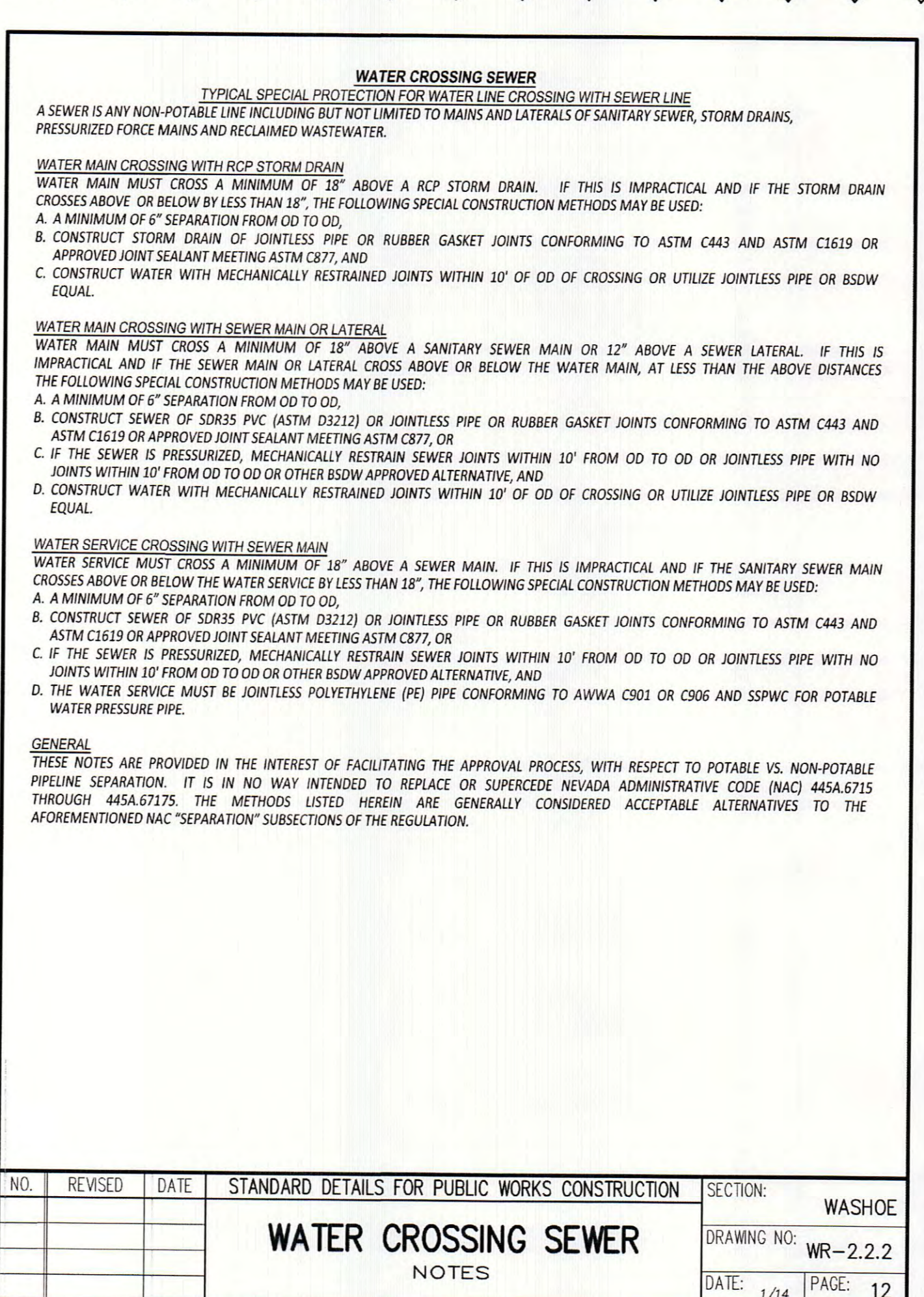
DRAWING NO:	WR-2.5
DATE:	7/09
PAGE:	15



NO.	REVISED	DATE	STANDARD DETAILS FOR PUBLIC WORKS CONSTRUCTION	SECTION:
				WASHOE

**WATER & SEWER SEPARATIONS**

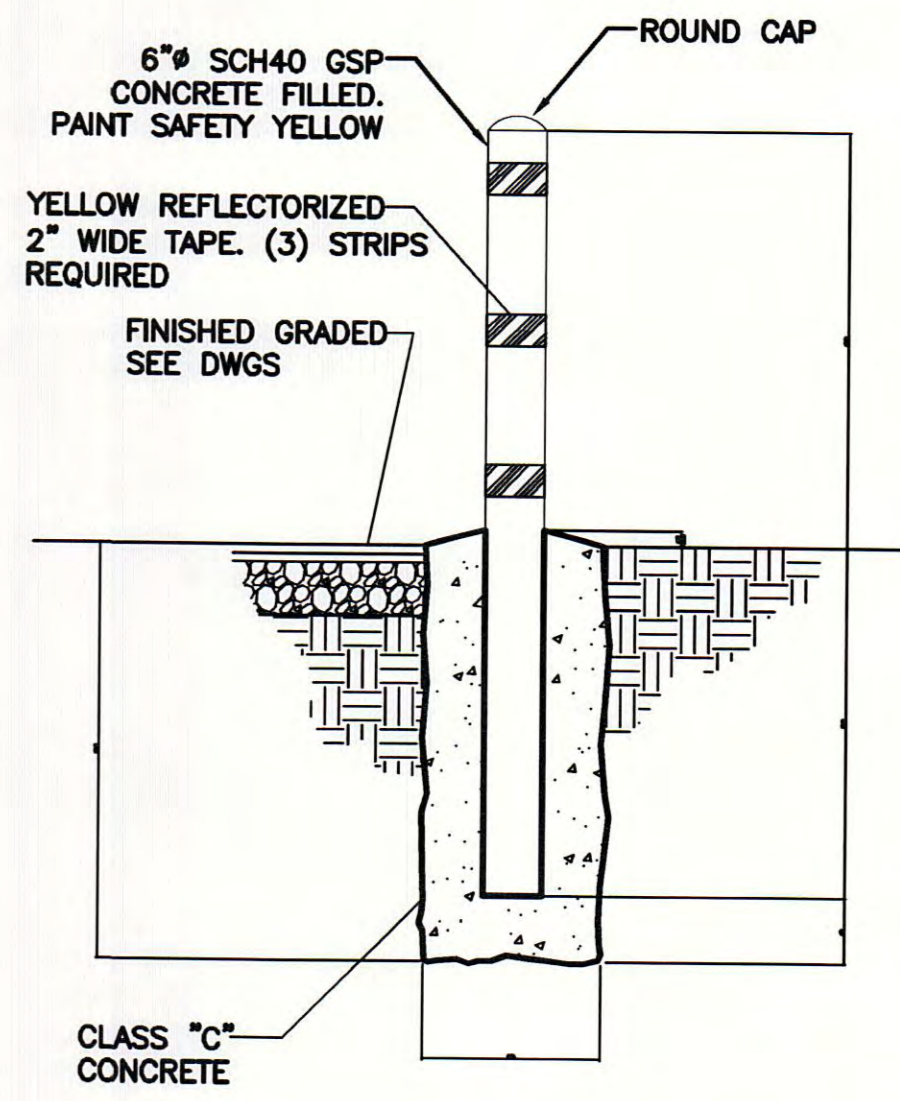
DRAWING NO:	WR-2.1
DATE:	1/14
PAGE:	11



NO.	REVISED	DATE	STANDARD DETAILS FOR PUBLIC WORKS CONSTRUCTION	SECTION:
				WASHOE

**WATER CROSSING SEWER**

DRAWING NO:	WR-2.2.2
DATE:	1/14
PAGE:	12



NO.	REVISED	DATE	STANDARD DETAILS FOR PUBLIC WORKS CONSTRUCTION	SECTION:
				WASHOE

**WATER CROSSING SEWER**

DRAWING NO:	WR-2.2.2
DATE:	1/14
PAGE:	12

**COMBINATION AIR RELEASE**

SCALE: NONE

**NOTES:**

- FUSION EPOXY LINED & COATED STEEL PIPE, OR APPROVED EQUAL, SHALL BE USED INSTEAD OF HDPE WHERE HDPE IS SHOWN ON THE DETAIL.
- ALL PIPE, FITTINGS, AND VALVES (INCLUDING CARV) SHALL BE RATED FOR 275 PSI MIN WORKING PRESSURE.
- INSTALL 2 BOLLARDS TO PROTECT ABOVE-GRADE COMPONENTS; BOLLARD LOCATIONS TO BE INSTALLED PER INSPECTOR.
- INSTALL DI-ELECTRIC INSULATING JOINT ADJACENT TO BALL VALVE.

**WATER CROSSING SEWER**

SCALE: NONE

**WATER CROSSING SEWER**

SCALE: NONE

V:\2013\Active\20130115\Drawings\active\001151-D1-D3-D5.dwg  
Mar 07, 2014 - 10:48am

REVISION	DESCRIPTION	BY	APP	DATE
1	REPLACED STANDARD DETAILS WITH UPDATED VERSIONS	RDJ	RDJ	3/7/14

WORK ORDER NO. \_\_\_\_\_

DESIGNED \_\_\_\_\_ RDJ

DRAWN \_\_\_\_\_ JPB

DATE \_\_\_\_\_ FEBRUARY 2014

CHECKED \_\_\_\_\_ RDJ

SUBMITTED \_\_\_\_\_

RECOMMENDED \_\_\_\_\_

APPROVED \_\_\_\_\_

**TRUCKEE MEADOWS WATER AUTHORITY**

1355 CAPITAL BLVD. / PO BOX 3013  
RENO, NEVADA 89520-3013  
PH 775-834-8000 / FX 775-834-8003

**NOT REPRODUCIBLE**

PROPERTY OF TRUCKEE MEADOWS WATER AUTHORITY, RETURN UPON COMPLETION OF PROJECT (Per Homeland Security Act)

**BRAVO INTERTIE PROJECT**

**WASHOE COUNTY, NEVADA**

**TYPICAL CIVIL DETAILS 1**

SHEET NUMBER **D1**

13 OF 29

**Stantec**

Call Before You Dig **811**

**BID SET**

6975 Sierra Center Parkway, Suite 200  
Reno, NV 89511  
www.stantec.com

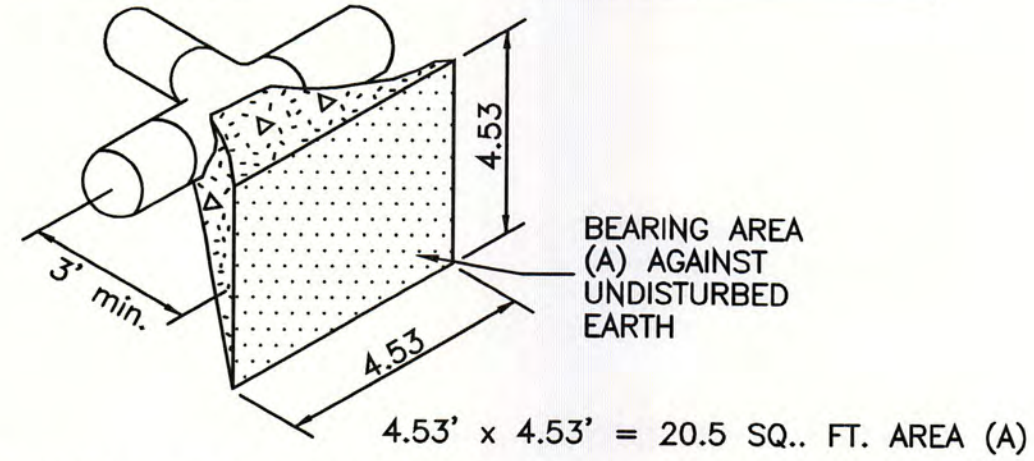
The Contractor shall verify and be responsible for all dimensions. DO NOT scale the drawing - any errors or omissions shall be reported to Stantec without delay. The Copyrights to all designs and drawings are the property of Stantec. Reproduction or use for any purpose other than that authorized by Stantec is forbidden.



Type of Fitting	90° Bend	45° Bend	11 1/4" or 22 1/2" Bend	Tee	Cross w/plug	Reducer	All plugs (Dead End)
Typical Installation							

**DOMESTIC WATER SYSTEM  
THRUST BLOCK BEARING AREA (sq. ft.) "A" SURFACE**

Type of Fitting	90° Bend	45° Bend	22 1/2" Bend	11 1/4" Bend	Dead End or Tee	Cross w/plug
6"	7.9	4.3	2.2	1.1	5.6	5.6
8"	13.6	7.4	3.8	1.9	9.6	9.6
10"	20.5	11.1	5.7	2.8	14.5	14.5
12"	29.0	15.7	8.0	4.0	20.5	20.5
16"	50.4	27.3	13.9	7.0	35.7	35.7



EXAMPLE OF THRUST BLOCK FOR 12" TEE BEARING SURFACE AT 2000 PSF, MAX. TEST PRESSURE 300 PSI

**THRUST BLOCK NOTES:**

- THRUST BLOCKS TO BE CONSTRUCTED OF 4,000 PSI CONCRETE.
- AREAS GIVEN ARE FOR CLASS PIPE AT TEST PRESSURE OF 300 PSI, AND AN ALLOWABLE SOIL BEARING CAPACITY OF 2,000 POUNDS PER SQUARE FOOT.
- BLOCKS TO BE POURED AGAINST UNDISTURBED SOIL.
- JOINTS, BOLTS, AND FACE PLUGS TO BE KEPT CLEAR OF CONCRETE BY USE OF PLASTIC WRAP. SIDES SHALL BE WOOD FORMED UNLESS OTHERWISE APPROVED BY ENGINEER.
- THRUST BLOCKS REQUIRED AT ALL FITTINGS.

**THRUST BLOCK**

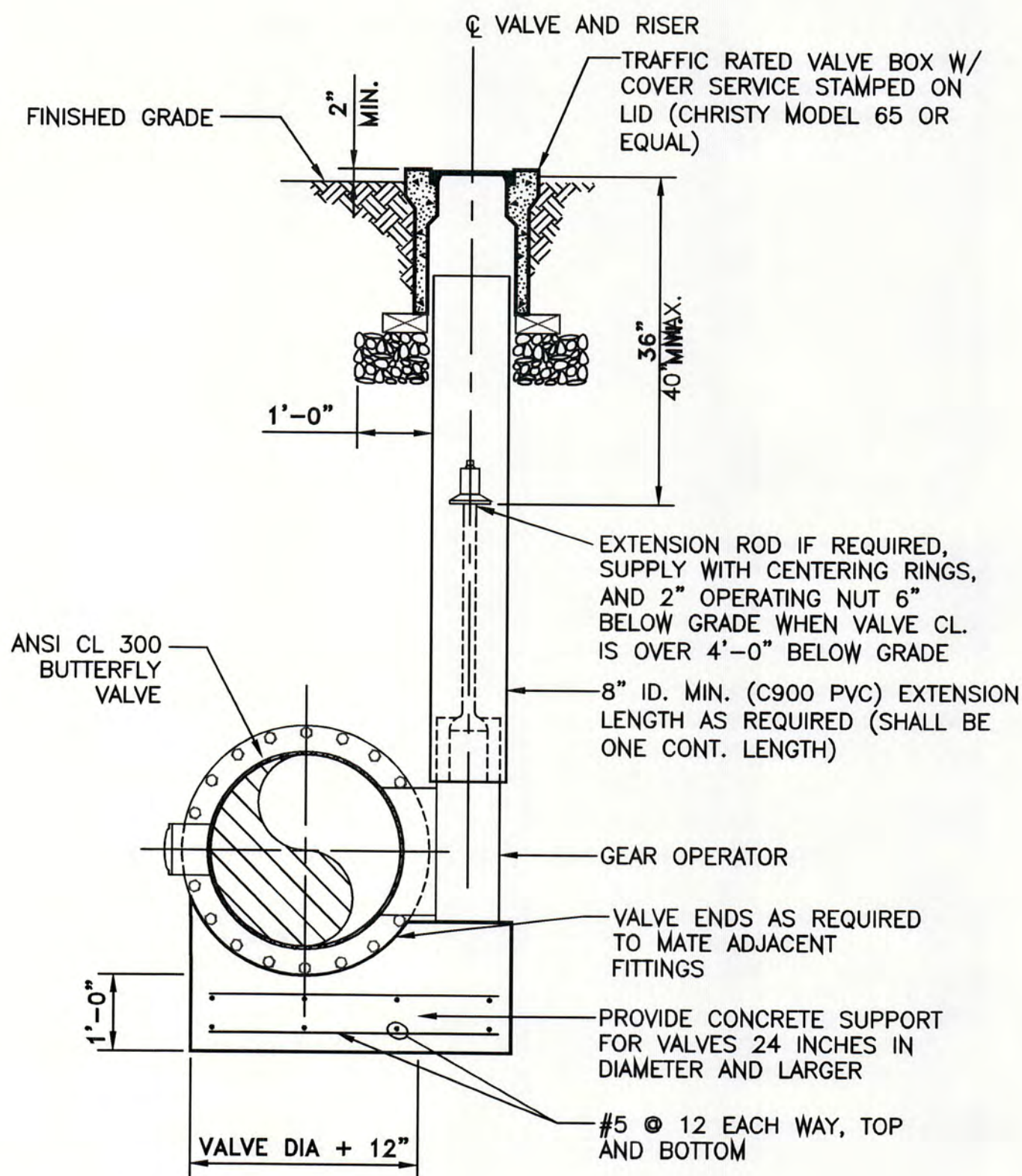
SCALE: NONE

A  
D3

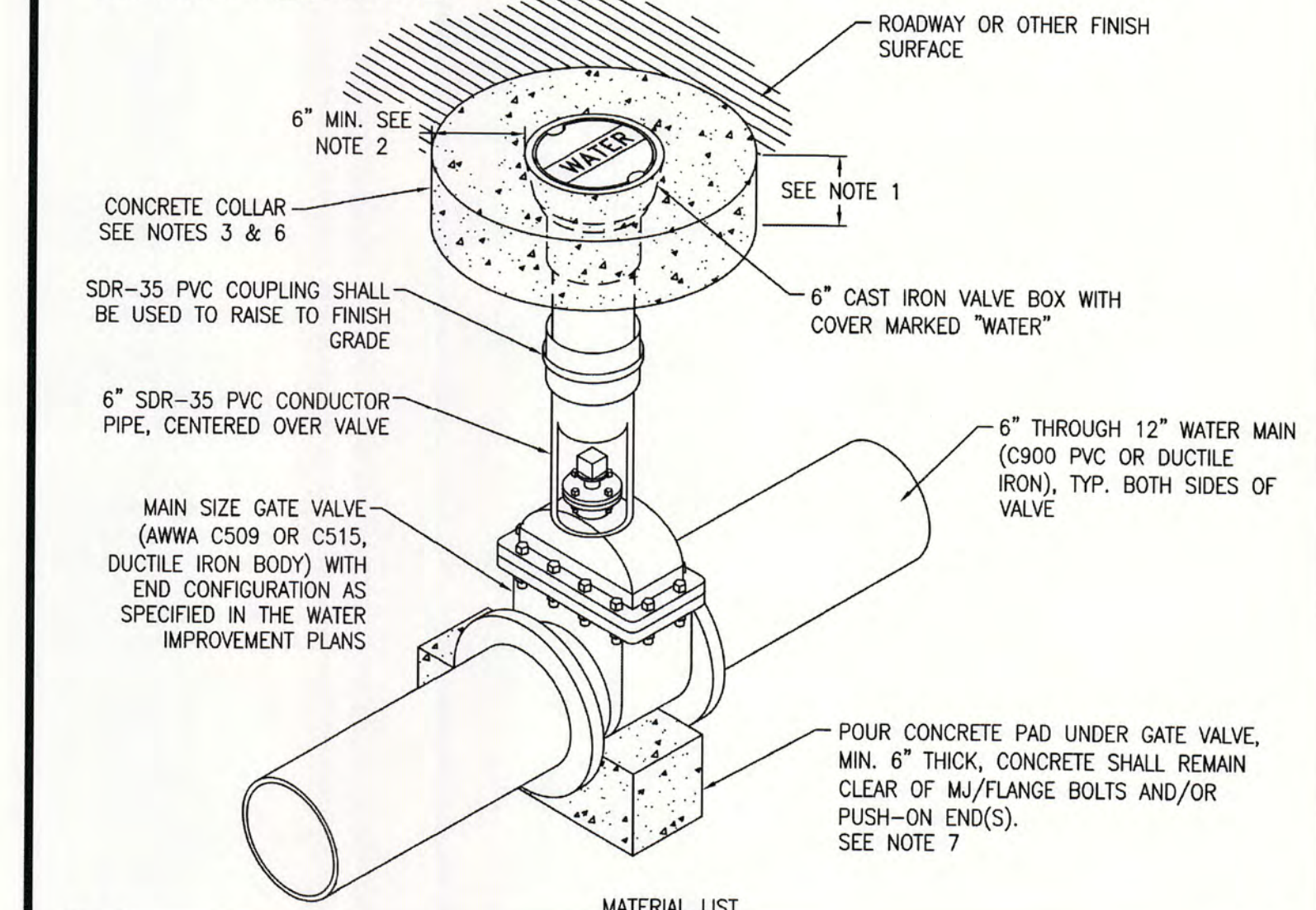
**BURIED BUTTERFLY VALVE AND VALVE BOX SETTINGS DETAIL**

SCALE: NONE

B  
D3



- NOTES:**
- CONCRETE COLLAR SHALL BE MINIMUM 6-INCHES THICK OR MATCH PAVEMENT THICKNESS, WHICHEVER IS GREATER, UNLESS OTHERWISE SPECIFIED BY THE JURISDICTIONAL AGENCY RESPONSIBLE FOR THE ROADWAY.
  - FOR MULTIPLE VALVE/RISER BOXES IN CLOSE PROXIMITY, A MONOLITHIC CONCRETE COLLAR MAY BE POURED.
  - CONTRACTOR AND/OR DESIGN ENGINEER SHALL CONSULT WITH THE JURISDICTIONAL AGENCY RESPONSIBLE FOR THE ROADWAY FOR REQUIREMENTS THAT MAY VARY FROM THIS STANDARD PRIOR TO CONSTRUCTION.
  - ALL BOLTS AND EXPOSED METAL SHALL BE COATED WITH BRUSHED-ON MASTIC.
  - GATE VALVE, DUCTILE IRON PIPE, AND OTHER METAL PARTS SHALL BE ENCASED WITH POLYETHYLENE WRAP PER AWWA C105.
  - UNLESS OTHERWISE SPECIFIED BY THE JURISDICTIONAL AGENCY RESPONSIBLE FOR THE ROADWAY, PORTLAND CEMENT CONCRETE (P.C.C.) FOR CONCRETE COLLAR SHALL HAVE THE FOLLOWING CHARACTERISTICS: 4,000 PSI MINIMUM COMPRESSIVE STRENGTH AT 28 DAYS, MINIMUM 6 SACKS OF CEMENT PER CUBIC YARD WITH A MAXIMUM WATER/CEMENT RATIO OF 0.45, AIR ENTRAINMENT 6% ± 1.5%, SLUMP AT 1 TO 4 INCHES. BAG CONCRETE MIX IS NOT ACCEPTABLE.
  - CONCRETE FOR PAD SHALL HAVE A COMPRESSIVE STRENGTH OF NOT LESS THAN 3,000 PSI AFTER 28 DAYS. BAG CONCRETE MIX IS NOT ACCEPTABLE.



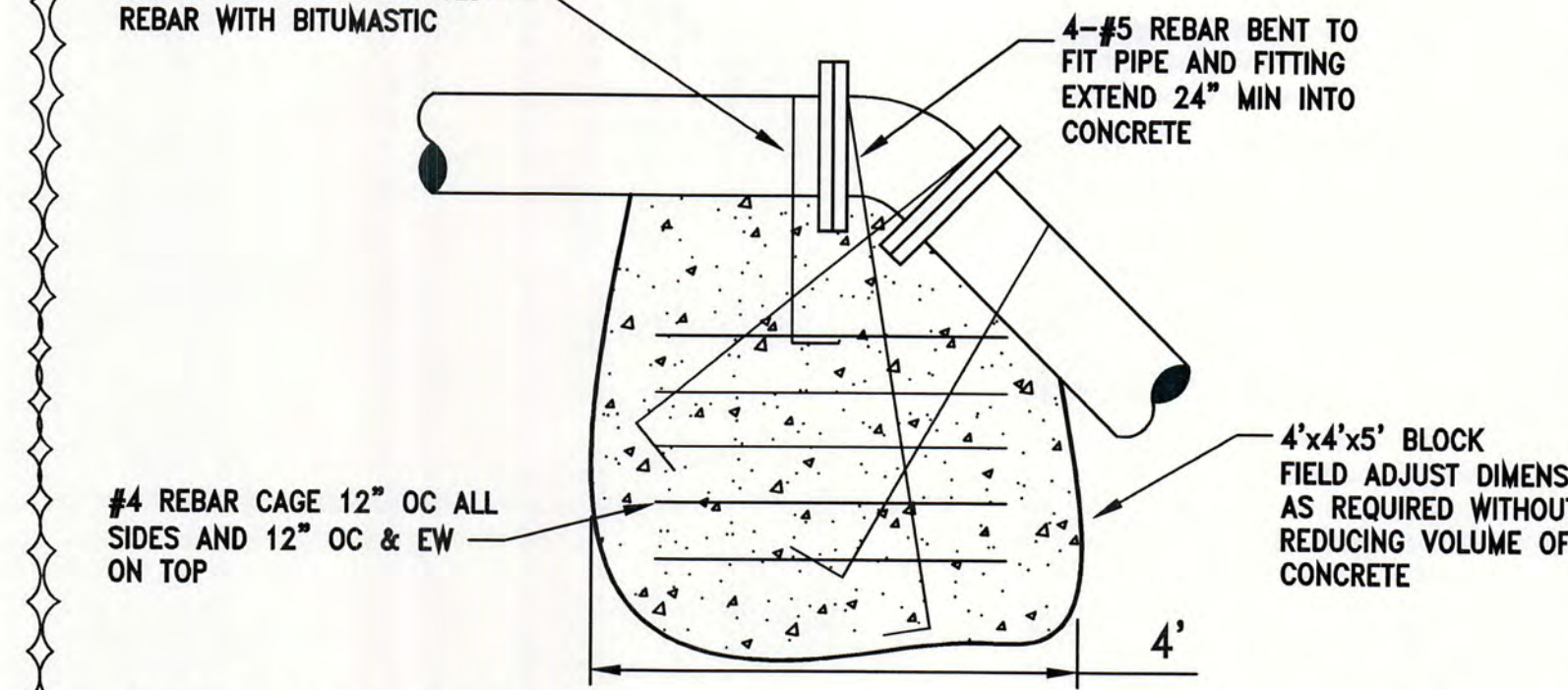
**MATERIAL LIST**

QTY	DESCRIPTION
1	MAIN SIZE GATE VALVE (AWWA C509 OR C515, DUCTILE IRON BODY) WITH END CONFIGURATION AS SPECIFIED IN THE WATER IMPROVEMENT PLANS
1	MASTIC (1 GALLON CAN - BRUSH ON)
1	6" SDR-35 PVC CONDUCTOR PIPE SECTION
1	6" CAST IRON VALVE BOX WITH COVER MARKED "WATER"
1	FULL FACE GASKET
1	CONCRETE BULK - PAD AND COLLAR

DATE	APPENDIX 10J	DRAWING NUMBER
1/2002	DISTRIBUTION VALVE INSTALLATION	10J-2
7/2011	IN-LINE GATE VALVE WITH CONCRETE COLLAR	

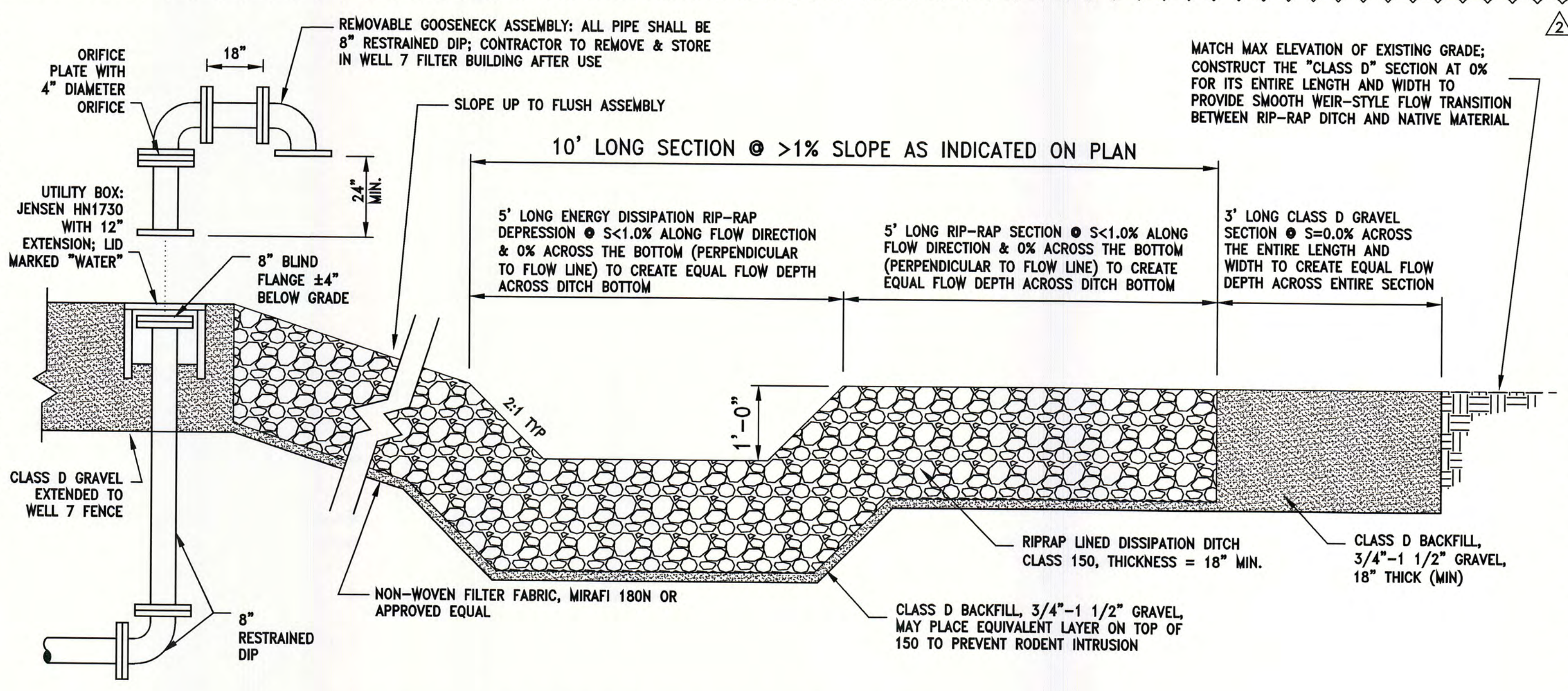
**IN LINE GATE VALVE WITH CONCRETE COLLAR**

SCALE: NONE



**TIE-BACK ANCHOR BLOCK**

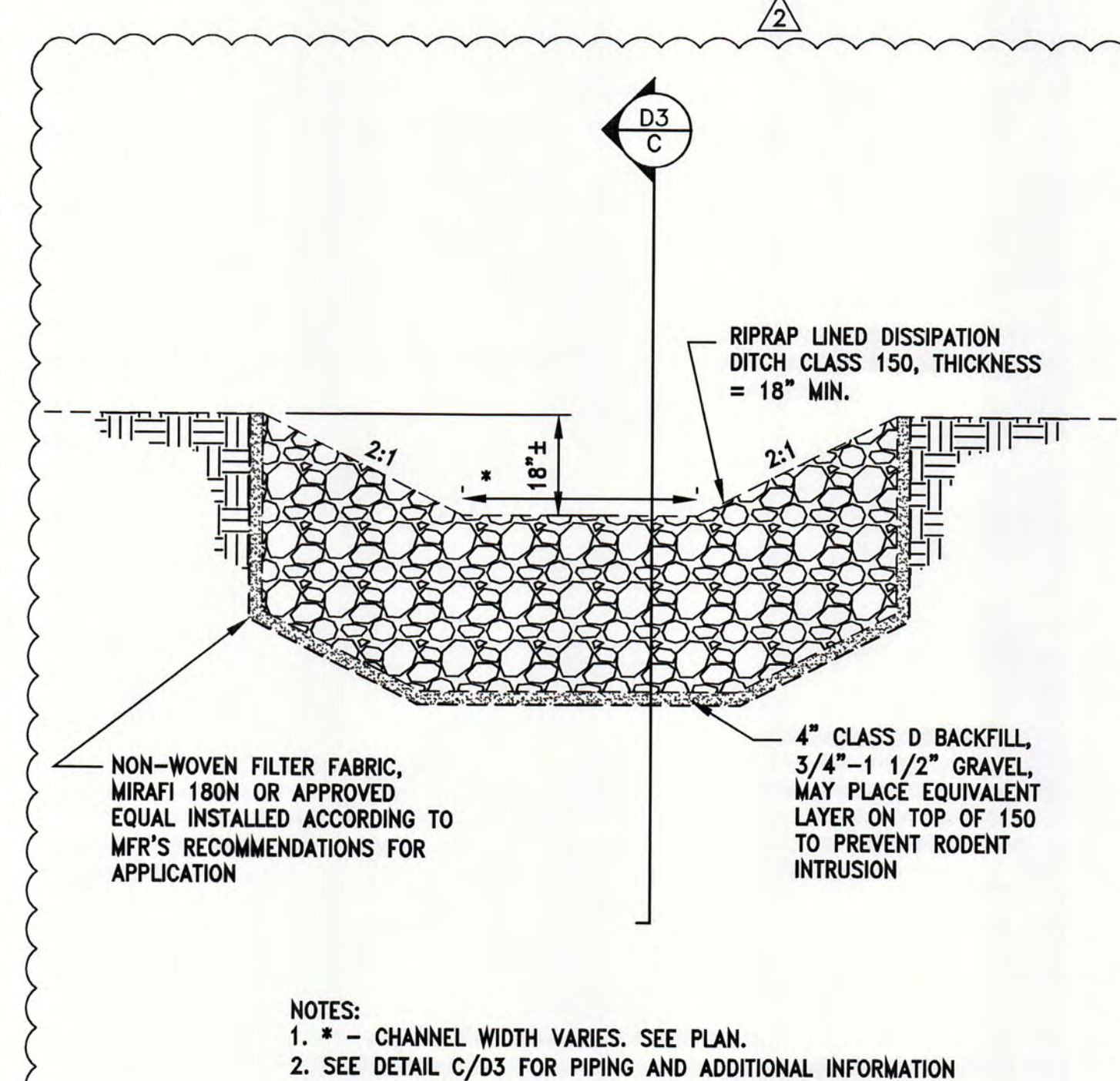
SCALE: NONE



**FLUSH ASSBLY & RIP-RAP CHANNEL SECTION**

SCALE: NONE

C  
D3



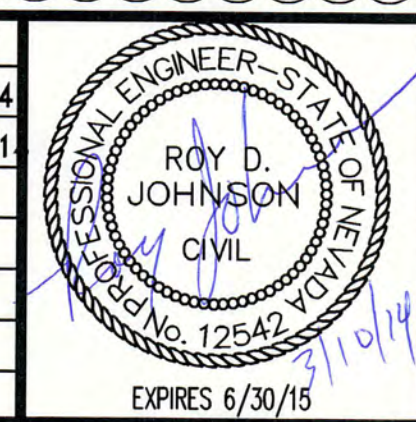
**RIP-RAP CROSS SECTION**

SCALE: NONE

D  
D3

V:\2013\Active\205300151\Drawing\00151-D1-D3-D5.dwg  
Mar 10, 2014 12:48pm

REVISION	DESCRIPTION	BY	APP	DATE
1	RIP-RAP CHANNEL SECTION, ANCHOR BLOCK DETAIL, 4" ORIFICE PLT	LRP	RDJ	3/4/14
2	MODIFICATIONS FOR WCDHS REVIEW; SUPERCEDES REV. 1 CHANGES	RDJ	RDJ	3/10/14



WORK ORDER NO.
DESIGNED: RDJ
DRAWN: JPB
DATE: FEBRUARY 2014
CHECKED: RDJ
SUBMITTED:
RECOMMENDED:
APPROVED:

**TRUCKEE MEADOWS WATER AUTHORITY**  
1355 CAPITAL BLVD. / PO BOX 30013  
RENO, NEVADA 89520-3013  
PH 775-834-8000 / FX 775-834-8003

**NOT REPRODUCIBLE**  
PROPERTY OF TRUCKEE MEADOWS WATER AUTHORITY. RETURN UPON COMPLETION OF PROJECT (Per Homeland Security Act)

**BRAVO INTERTIE PROJECT  
WASHOE COUNTY, NEVADA  
TYPICAL CIVIL DETAILS 3**

Call Before You Dig  
**811**  
6995 Sierra Center Parkway, Suite 200  
Reno, NV 89511  
www.stantec.com

**BID SET**

SHEET NUMBER  
**D3**  
15 OF 29

