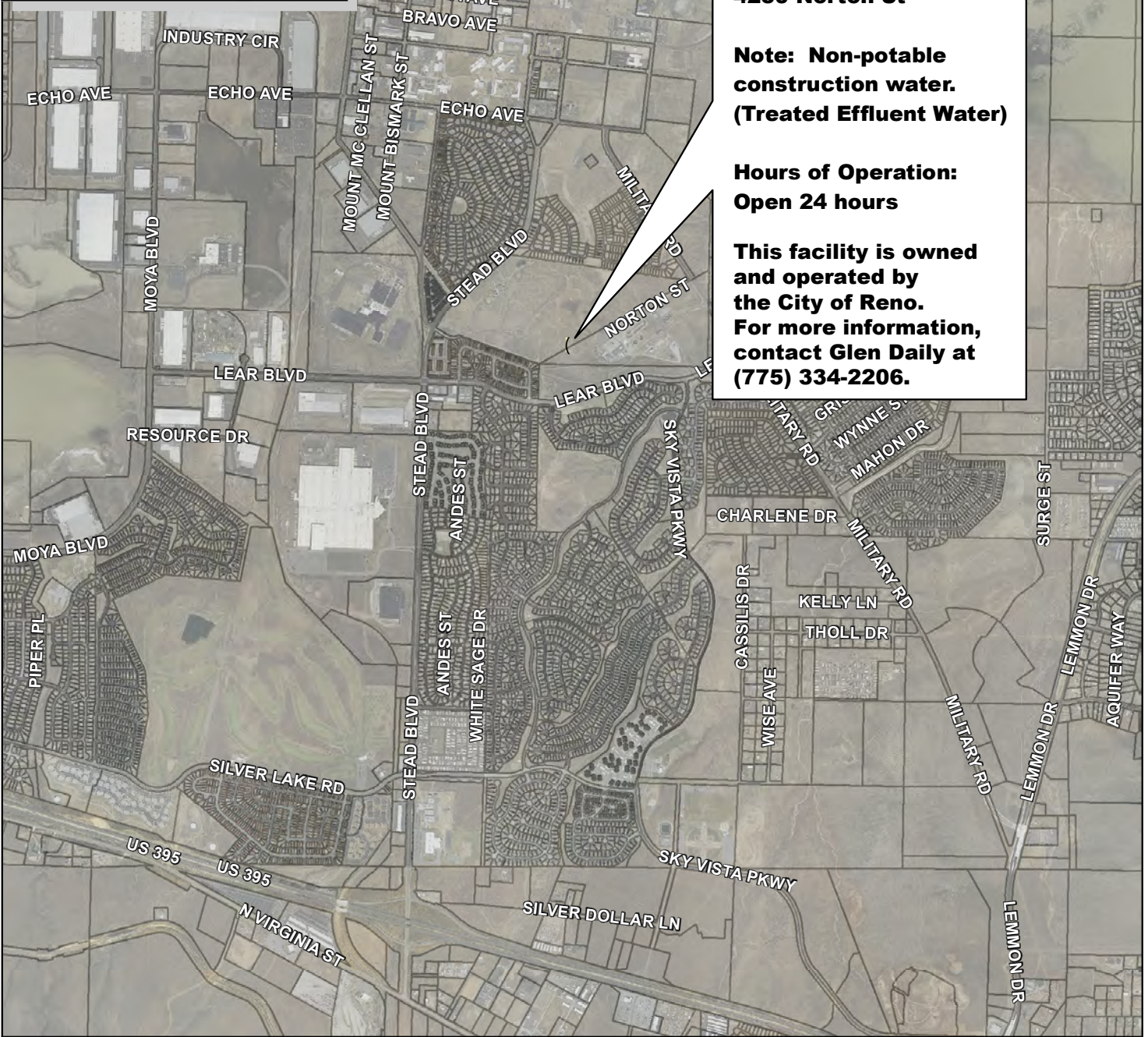


Inset Map



Stead Site

**Approximate Address:
4250 Norton St**

**Note: Non-potable
construction water.
(Treated Effluent Water)**

**Hours of Operation:
Open 24 hours**

**This facility is owned
and operated by
the City of Reno.
For more information,
contact Glen Daily at
(775) 334-2206.**



CONSTRUCTION WATER

STEAD

Truckee Meadows Water Authority
MAP BY: KJ
DATE 11/7/2011
SCALE: 1 inch = 2,350 feet

