



## **Addendum No. 2**

### **D'ANDREA #3 PUMP STATION**

**PWP Bid No.: WA-2017-072**  
**TMWA Capital Project No.: 13-0020**  
**February 3, 2017**

The following information, clarifications, changes and modifications are by reference incorporated into the bid documents for the above referenced project. Any work item or contract provision not changed or modified will remain in full force and effect. The bid date and time and construction schedule remain the same.

#### **QUESTIONS AND RESPONSES**

**Question No. 1:** I am doing my take off of the materials I have noticed some irregularities in the valve schedule as well as called out pressure class mating flanges. On C5 the PRV valve list does not contain V8 which is shown on Dwg. C4 the list also shows V3 as a 6" valve, but it appears on an 1-1/2" line on Dwg C4.

**Response to Question No. 1:** The valve callouts on Sheet C4 have been corrected to match the valve schedule table on sheet C5. The revised sheet C4 is included as part of this addendum.

**Question No. 2:** On C5 the PRV valve list V2 is listed as a 150# flanged valve yet the Dwg C4 the materials list shows items #25 and #40 as 300# mating flanges.

**Response to Question No. 2:** See response to question 1.


**Question No. 3:** On C5 the PRV valve list V4 is listed as a 150# flanged valve yet the Dwg C4 the materials list shows items #43 and #43 as 300# mating flanges.

**Response to Question No. 3:** See response to question 1.

**Question No. 4:** Please clarify these issues, and provide V8 downstream PSI setting and that it is a 150# class flanged valve.

**Response to Question No. 4:** See response to question 1.

**Question No. 5:** The NVE drawings show the applicant installing the transformer pad; however, the civil drawings show the transformer pad being installed by others – not part of the TMWA contract. Will the 196LF of primary conduit be the responsibility of the prime contractor for this



project, or will that work be done “by others”? If the work is to be done for this contract, will the street and sidewalk work be complete, or will that be done after the conduit installation?

**Response to Question No. 5:** The transformer PAD will be installed by others (Developer’s Contractor) and is not part of this Contract.

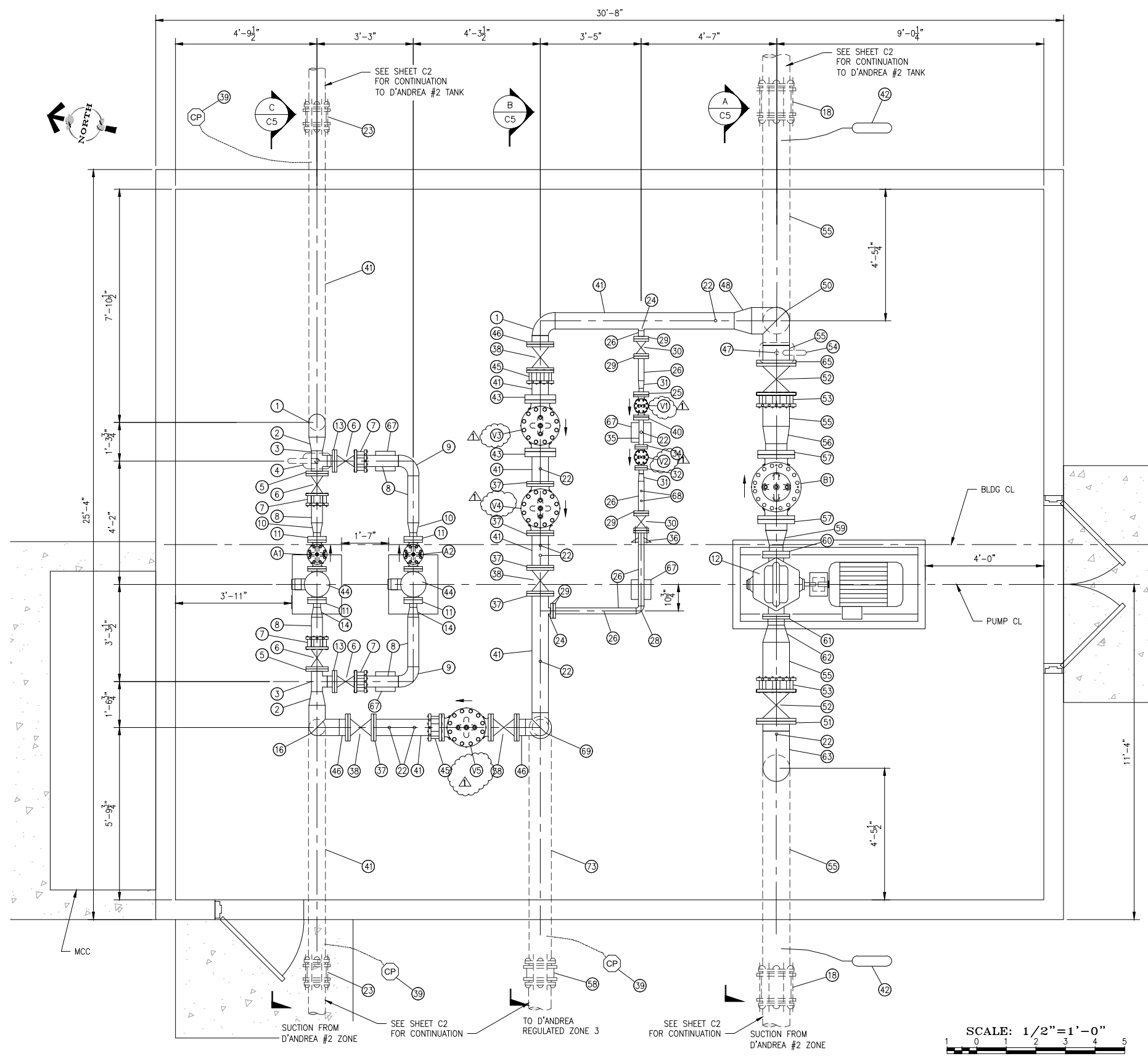
**Question No. 6:** With regards to General Condition, section 00700, page 21 “G 4 Contractors Pollution Liability Insurance, would you confirm if pollution liability insurance coverage is a definite requirement by TMWA.

**Response to Question No. 6:** Pollution liability insurance is not required on this Contract.

## **CONTRACT DRAWING REVISIONS**

Replace sheet C4 of the Contract Drawings with Sheet C4 attached. The valve IDs have been corrected to match the table on sheet C5.

S:\Projects\STA\TMWA\TMWA D'Andrea #3 Pump Station 16047.DWG\Design\CAD\13-0020 C4-C5 PSS Piping.dwg  
Feb 03, 2017 3:34pm



MATERIAL LIST		
○ INSIDE		
TAG	QTY.	DESCRIPTION
1	3	6" STL 90° ELB. SHORT RADIUS
2	2	6"x4" STL ECC. REDUCER (FLAT SIDE ON TOP)
3	2	4" STL TEE
4	1	1" CAV. SEE DETAIL 1/D3
5	2	4" SOWF
6	4	4" FLG RSGV
7	4	4" REST. FCA
8	AS REQ'D	4" SCH 40 STL PIPE, EL&C, ENDS PER PLANS
9	2	4" STL 90° ELB. LONG RADIUS
10	2	4"x2.5" STL CONC. REDUCER
11	4	2.5" WNF (300#)
12	1	B PUMP AND MOTOR SEE SPECS
13	2	4" WNF
14	2	4"x2.5" STL ECC. REDUCER (FLAT SIDE ON TOP)
15	1	1.5" OUTLET PER DET. 5/D1
16	1	6" STL SIDE OUTLET 90° LONG RADIUS ELB.
17	2	10" STL ELB. SHORT RADIUS
18	2	10" DI REST. CPLG
19	-	NOT USED
20	-	NOT USED
21	-	NOT USED
22	9	1" OUTLET/VALVE PER DET. 5/D1
23	2	6" DI REST. CPLG
24	2	2" OUTLET
25	1	1.5" WNF (300#)
26	AS REQ'D	2" SCH 40 STL PIPE, EL&C, ENDS PER PLANS
27	-	NOT USED
28	1	2" STL 90° ELB. SHORT RADIUS
29	5	2" SOWF
30	2	2" FLG RSGV
31	2	2"x1.5" STL CONC. REDUCER
32	1	1.5" WNF
33	1	8" STL ELB. SHORT RADIUS
34	1	1.5" SOWF
35	AS REQ'D	1.5" SCH 40 STL PIPE, EL&C, ENDS PER PLANS
36	1	2" REST. FCA PER M11, 150 PSI DESIGN PRESSURE
37	7	6" SOWF
38	4	6" FLG RSGV
39	3	CP TEST STATION PER DET. 2/D5 (SEE YARD PIPE ADDNL)
40	1	1.5" SOWF (300#)
41	AS REQ'D	6" SCH 40 STL PIPE, EL&C, ENDS PER PLANS
42	2	32LB ANODE PER DET. 2/D5
43	2	6" SOWF (300#)
44	2	A1 AND A2 PUMP AND MOTOR - SEE SPECS
45	2	6" REST. FCA
46	3	6" WNF
47	1	2" OUTLET PER 6/D1
48	1	6"x10" STL CONC. REDUCER
49	2	6" REST. FCA/INSULATING FLANGE KIT AND 1" THICK STL FILLER FLG
50	1	10" STL SIDE OUTLET 90° SHORT RADIUS ELB.
51	1	10" WNF
52	2	10" FLG RSGV
53	2	10" REST. FCA
54	1	2" CAV SEE DET. 1/D3
55	AS REQ'D	10" SCH 40 STL PIPE, EL&C, ENDS PER PLANS

MATERIAL LIST		
○ INSIDE		
TAG	QTY.	DESCRIPTION
56	1	10"x8" STL CONC. REDUCER
57	2	8" WNF (300#)
58	1	8" DI REST. CPLG
59	1	8"x5" STL CONC. REDUCER
60	1	5" WNF (300#)
61	1	6" WNF
62	1	10"x6" STL ECC. REDUCER (FLAT SIDE ON TOP)
63	1	10" STL 90° ELB. LONG RADIUS
64	2	10" REST. FCA/INSULATING FLANGE KIT AND 1" THICK STL FILLER FLG
65	3	10" SOWF
66	1	8"x6" STL CONC. REDUCER
67	13	PIPE SUPPORT
68	2	3/4" OUTLET PER DET. 6/D1
69	1	6" STL SIDE OUTLET 90° SHORT RADIUS ELB.
70	AS REQ'D	8" SCH 40 STL PIPE, EL&C, ENDS PER PLANS
71	1	8" SOWF
72	1	8" REST. FCA/INSULATING FLANGE KIT AND 1" THICK STL FILLER FLG
73	AS REQ'D	8" REST. DIP W/ POLY WRAP & BONDED JOINTS

**EXTERIOR PIPE/FITTING/VALVE NOTES:**

- ALL EXTERIOR PIPE/FITTINGS/VALVES SHALL HAVE JOINTS BONDED. SEE DETAILS SHEET D5. BONDED PIPE/JOINTS SHALL EXTEND INTO THE PUMP STATION BUILDING AND END AT THE INSULATION FLANGE ISOLATION KITS (AT DIP TO STL TRANSITION). ALL DIP SHALL BE THICKNESS CLASS 51 FOR CORROSION ALLOWANCE REQUIRED.

**NOTES FOR MATERIAL LIST:**

- FINAL MATERIAL LIST REQUIRED SHALL BE VERIFIED/DETERMINED BY CONTRACTOR. NOTIFY TMWA PROJECT REPRESENTATIVE OF ANY OMISSIONS/ADDITIONS/CHANGES PRIOR TO ORDERING.
- REFER TO SPECIFICATIONS FOR MATERIALS AND OPTIONS REQUIRED.
- PROVIDE INSULATING BUSHING OR DIELECTRIC UNION BETWEEN DISSIMILAR MATERIALS-SEE DETAILS.
- MINOR CHANGES TO PIPING SHALL BE ALLOWED TO ACCOMMODATE CONTRACTOR SUPPLIED/INSTALLED AND TMWA APPROVED PUMPS. CONTRACTOR TO VERIFY AND SUBMIT DIMENSIONED PIPING DRAWINGS PER ACTUAL PUMP DIMENSIONS.
- UNLESS NOTED, FLANGES SHALL BE CLASS 150 (STEEL) AWWA CLASS E (275 PSI) BOLT PATTERN. 300# (OR CLASS 300) FLANGES SHALL BE CLASS 300 (STEEL) AWWA CLASS F (300 PSI). DUCTILE IRON FLANGES AND GATE VALVES 12-INCHES OR LESS SHALL BE RATED FOR 350 PSI, PROVIDE PROFILE GASKET AS REQUIRED. THE CONTRACTOR SHALL CONFIRM THE PRESSURE RATING OF THE FLANGE/GASKET, FITTING(S) IS NOT EXCEEDED AS WELL AS COORDINATE MATING FLANGE BOLT PATTERN.
- TEST PRESSURES AS MEASURED AT PUMP/PIPE CENTERLINE
  - PUMP SUCTION AND ZONE 3 REGULATED = 150 PSI
  - PUMP DISCHARGE (DOWNSTREAM PRVs) = 300 PSI

**BID SET  
JANUARY 2017**

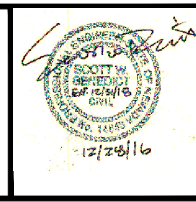
REVISION	DESCRIPTION	BY	APP	DATE
△	ADDENDUM 2	SWB		2/3/17

WORK ORDER NO. 13-0020  
 DESIGNED \_\_\_\_\_  
 DRAWN JH/SWB  
 DATE JANUARY 2017  
 CHECKED SB  
 SUBMITTED \_\_\_\_\_  
 RECOMMENDED \_\_\_\_\_  
 APPROVED JB

**TRUCKEE MEADOWS WATER AUTHORITY**  
 1355 CAPITAL BLVD. / PO BOX 30013  
 RENO, NEVADA 89520-3013  
 PH 775-834-8000 / FX 775-834-8003

**NOT REPRODUCIBLE**  
 PROPERTY OF TRUCKEE MEADOWS WATER AUTHORITY. RETURN UPON COMPLETION OF PROJECT  
 (Per Homeland Security Act)

**D'ANDREA 3 PUMP STATION  
PUMP STATION PIPING PLAN**



SHEET NUMBER  
**C4**  
6 OF 41



End of Addendum #2