

1355 Capital Blvd. • P.O. Box 30013 • Reno, NV 89520-3013  
P 775.834.8080 • F 775.834.8003

## **Addendum No. 1**

### **2014-2015 LIGHT CREW TRUCK**

**TWMA 332 BID NO.: 2015-007**  
**March 10, 2015**

The following information, clarifications, changes and modifications are by reference incorporated into the bid documents for the above referenced project. Any work item or contract provision not changed or modified will remain in full force and effect. The bid date and time and construction schedule remain the same.

#### **CLARIFICATION, QUESTIONS AND RESPONSES**

**Clarification Item No. 1: The TMWA Project Number for this project is 2015-007.** It was improperly classified as 2015-005 in the Heading of the Invitation to Bid, and the body of the Acknowledgement and Execution page of the bid documents. The Invitation to Bid, Bid Instructions, and Bid Package have been revised and the corrected version is posted to TMWA's website.

**Clarification Item No. 2:** Attachment A is included at the end of Addendum No. 1 and is intended to provide the vehicle information necessary for bidders to quote the air compressors.

**Question No. 1:** Can you tell me what engine is in the 2015 Ford F550 and does it have a PTO opening on transmission?

**Response to Question No. 1:**

- The truck is equipped with the 6.8L V-10 Gas SOHC EFI.
- The truck has an automatic transmission with a PTO port.

**Question No. 2:** Please advise on the following; The last page of your bid schedule "Acknowledgement and Execution" indicate this must be notarized. Is this required **with the bid** or is this required **after the award** has been made.

**Response to Question No. 2:** The Acknowledgement and Execution page is part of the bid package. The Acknowledgement and Execution page must be signed, notarized, included as part of bidders' bid package and submitted to TMWA by the scheduled bid opening date.

**ATTACHMENT "A"**



# PTO and Hydraulic Drive Compressors and Generators Truck Information Sheet (D-25)

D-25 Form Must Be Submitted With Each Quick Quote Form

Today's Date: \_\_\_/\_\_\_/\_\_\_

\*\*Please Note: Underdeck and Genair Systems are for use on cab chassis vehicles only. Not intended for pickup trucks.

Submitted By: \_\_\_\_\_

Fax form to 219-879-5800 or email to [sales@vanair.com](mailto:sales@vanair.com)

### Dealer Information

Name: \_\_\_\_\_  
Phone: \_\_\_\_\_  
Fax: \_\_\_\_\_  
Address: \_\_\_\_\_  
City, State, Zip: \_\_\_\_\_  
Email: \_\_\_\_\_

### Customer Information

Name: \_\_\_\_\_  
Phone: \_\_\_\_\_  
Fax: \_\_\_\_\_  
Address: \_\_\_\_\_  
City, State, Zip: \_\_\_\_\_  
Email: \_\_\_\_\_

### Vehicle Information

Year: 2015 Make: Ford VIN: \_\_\_\_\_  
Vehicle Model: F-550 Engine (Make & Model Number): 6.8L V-10 Gas SOHC EFI  
Transmission (Make & Model Number): 5 speed Torque Shift  
Air Brakes or Hydraulic Brakes  
Driveline:  2 WD  4 WD Manual Shift or Electronic Shift  
Cab Style:  Standard Cab  Extended Cab  Crew Cab  Other: \_\_\_\_\_  
Installation Configuration:  Cab / Chassis  Body-on  
Body Type:  Utility  Van / Box  Flatbed  Other \_\_\_\_\_  
Wheel Base: 185.8" inches (centerline of front axle to centerline of rear axle)  
Cab-to-Axle: 84" inches (back of cab to centerline of rear axle)  
Fuel Tank (s):  Midship  Aft (behind rear axle)  Saddle (under step)  Other \_\_\_\_\_  
Exhaust Configuration:  Driver-side  Passenger-side  Stack  Other \_\_\_\_\_  
Transmission PTO Port Locations:  None  Left-side  Right-side  Bottom  
Does the vehicle currently have any other PTO - or hydraulic-driven systems and / or engine speed control system?  Yes  No  
Explain: \_\_\_\_\_  
Are there any other potential interference for an underdeck mounted system? \_\_\_\_\_

What potential quantities of systems are being specified to this configuration? \_\_\_\_\_

### Compressor Information:

What is the maximum rated air capacity desired? 160 (cfm)  
What is the maximum rated air pressure desired? 100-150 (psi)  
Is a dual pressure system desired?  Yes, desired pressures? \_\_\_\_\_ / \_\_\_\_\_ psi  
If Yes, what will be the application for each pressure setting? \_\_\_\_\_

### Customer / User Information:

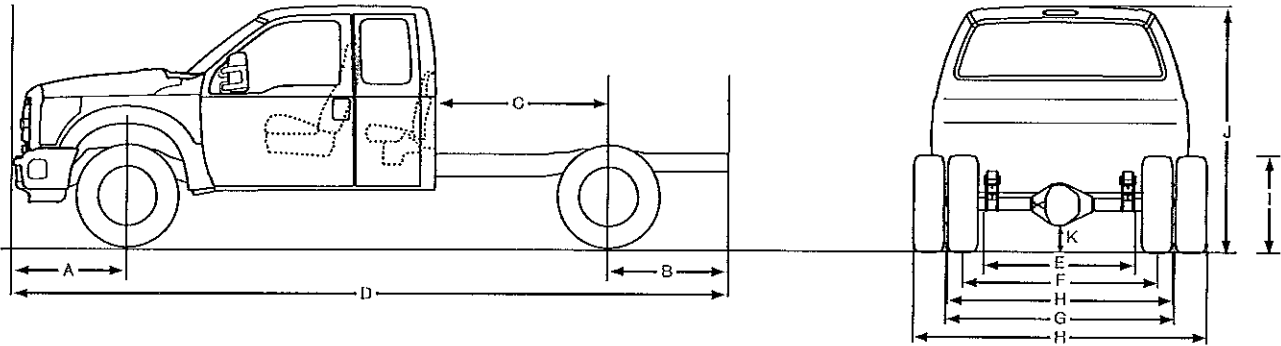
What type of business or industry? \_\_\_\_\_  
What will the unit be used to operate (i.e., type of tool or type of work)? \_\_\_\_\_  
In what area of the country will the unit be operated? \_\_\_\_\_



# Super Duty Chassis Cabs F-350/F-450/F-550

Dimensions cont'd

# 2015



## Body Dimensions

### SUPERCAB CHASSIS CAB

Series	F-350		F-450		F-550	
Drive	4x2	4x4	4x2/4x4	4x2/4x4	4x2/4x4	4x2/4x4
Single/Dual Rear Wheels	SRW/DRW	SRW/DRW	DRW	DRW	DRW	DRW
Wheelbase (in.)	161.8	161.8	161.8	185.8	161.8	185.8
Code	Description (in.)					
A	38.1	38.1	38.1	38.1	38.1	38.1
B	47.6	47.6	47.6	47.6	47.6	47.6
C	60.0	60.0	60.0	84.0	60.0	84.0
D	247.5	247.5	247.5	271.5	247.5	271.5
E	34.1	34.1	34.2	34.2	34.2	34.2
F	68.3	68.3	74.8	74.8	74.8	74.8
F	68.1/ 71.1	68.1/ 71.1	74.0	74.0	74.0	74.0
G	—/ 71.1	—/ 71.1 <sup>(1)</sup>	74.0	74.0	74.0	74.0
H	79.6/ 92.2 <sup>(1)</sup>	79.6/ 92.2 <sup>(1)</sup>	93.9	93.9	93.9	93.9
I	31.7/ 32.2	33.5/ 34.1	32.9/ 32.8	32.8/ 32.7	33.4/ 33.3	33.3/ 33.2
I	26.7/ 26.1	28.1	28.1	28.2	27.9	27.9
J	76.7/ 77.0	79.7/ 80.1	80.3	80.4	80.4	80.5
K	8.6/8.2	8.6/8.2	8.0	8.0	8.4	8.4

(1) Tire Center Width = 74.1 and Tire Outside Width = 95.2 with Ambulance Prep Package wide track axle.

(2) The height data shown represents dimensions of a nominal vehicle with no options. Actual height may vary due to production tolerances. Frame height represents the distance between the top of frame to ground at end of frame.

Super Duty Chassis Cabs  
F-350/F-450/F-550

## FUEL TANK CAPACITY

Wheelbase (in.)	Availability	Location	Capacity (gallons)
161.8, 185.8	Standard	Aft-of-axle	40.0
161.8, 185.8 DRW	Available (in lieu of standard tank)	Midship	28.0
161.8, 185.8 DRW With 6.7L V8 Diesel	Available (in addition to standard tank)	Midship	28.0 (Total 68.0)

NOTE: Please see the Major Product Summary pages and/or the Dealer Ordering Guide for availability.

December 2013

esourcebook.dealerconnection.com

RE&T: 2015 Source Book

# Super Duty Chassis Cabs F-350/F-450/F-550

## Technical Specifications cont'd

# 2015

### Transmissions

#### AUTOMATIC TRANSMISSION SPECIFICATIONS

Make/Type	TorqShift 5-speed with Tow/Haul Mode	TorqShift 6-speed SelectShift Automatic with Tow/Haul Mode
Application	6.8L 3V V10	6.2L 2V V8 gasoline 6.7L 4V V8 diesel
Ratios (to 1):		
1st	3.11	3.97
2nd	2.20	2.31
3rd	1.55	1.51
4th	1.00	1.14
5th	0.71	0.85
6th	—	0.67
Reverse	2.88	3.12
Lubricant Capacity	19.0 qts. (17.98 liters)	16.2 qts./15.3 liters (6.7L) 17.2 qts./16.3 liters (6.2L)
Power Takeoff Data:		
Opening	SAE 6-bolt LH Side – Optional	SAE 6-bolt LH Side – Standard
Gear ratio	3.11 (1st)	1 to 1 (direct drive)
Number of teeth	121	52
Pitch diameter (in.)	8.50 (215.9 mm)	4.27 (108.4 mm)
Module (in.)	—	2.086
Normal pressure		
Normal pressure angle	17.989 degrees	19.339 degrees
Helix angle	Spur Gear	

#### UREA (DEF) DIESEL AFTERTREATMENT SPECIFICATIONS

Availability	Location	Capacity (gallons)	Tank Type
Diesel Chassis Cab	Inboard on Frame Rail	6.0	Plastic (urea corrosive to metal)

1. Ford material spec: WWS-M99C130-A.
2. Heated urea delivery module (urea freezes at -12°F).
3. Urea solution: 32% ammonia (NH<sub>3</sub>) solution in water.
4. Tanks can be filled using either bottles or nozzle.
5. Fluid is corrosive.
6. Fluid is nonflammable.
7. Supply lines are heated and are wheelbase-dependent for wide frames (x5), and cab length-dependent for narrow frames (x3). Lines are formed; however, somewhat flexible.
8. Vehicle operation will degrade as urea levels reach extremely low levels since this is an emission-regulated component. Vehicle speed will be gradually lowered to zero if operator takes no action to refill the tank.

Super Duty Chassis Cabs  
F-350/F-450/F-550

NOTE: Please see the Major Product Summary pages and/or the Dealer Ordering Guide for availability.

December 2013

[esourcebook.dealerconnection.com](http://esourcebook.dealerconnection.com)

RE&T: 2015 Source Book