

1355 Capital Blvd. • P.O. Box 30013 • Reno, NV 89520-3013
P 775.834.8080 • F 775.834.8003

Addendum No. 2

Water Main Replacement Project for F St. & 16th St., Sparks, NV

PWP Bid No. WA-2016-181
June 8, 2016

The following information, clarifications, changes and modifications are by reference incorporated into the bid documents for the above referenced project. Any work item or contract provision not changed or modified will remain in full force and effect. The bid date and time and construction schedule remain the same.

REVISIONS TO DRAWINGS

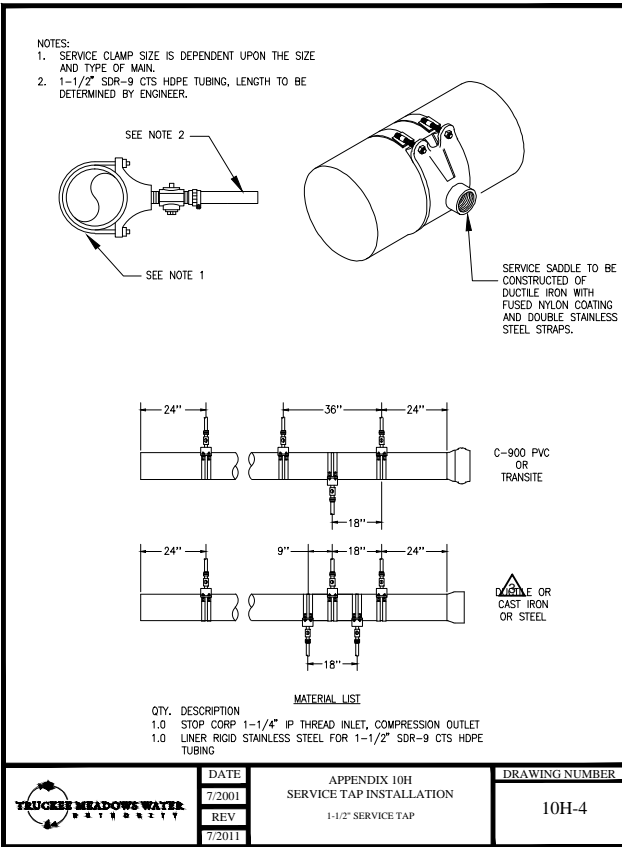
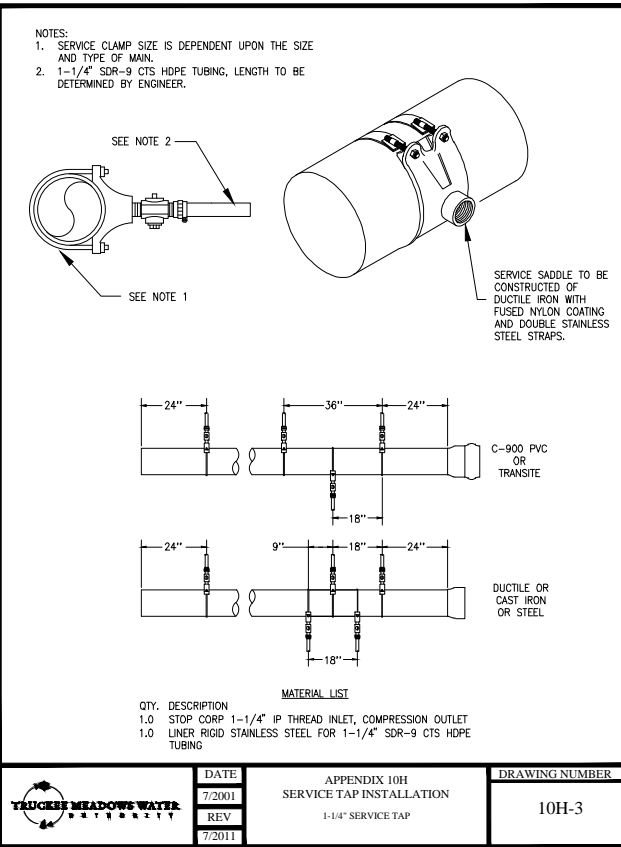
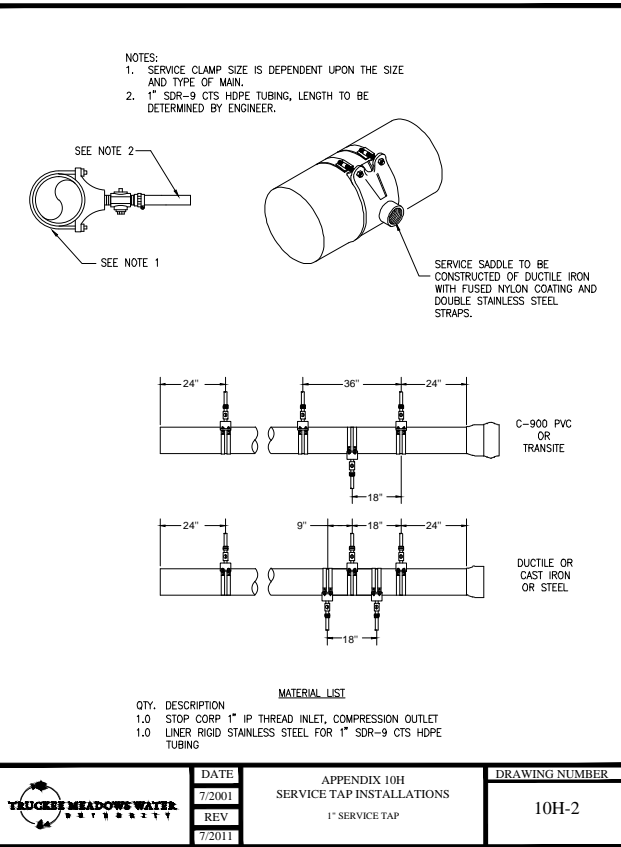
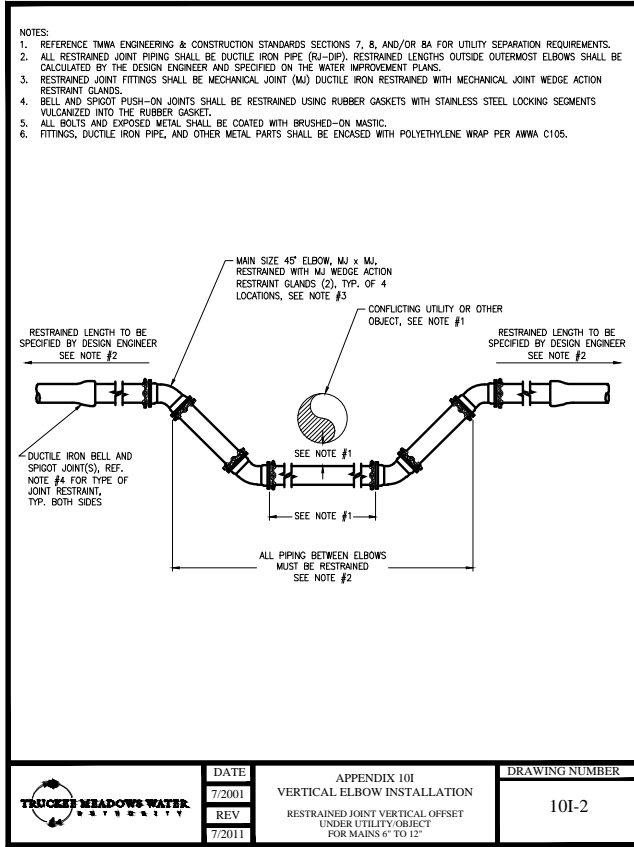
THE FOLLOWING REVISION SHALL APPLY AND BE INCORPORATED INTO THE DRAWINGS

DRAWINGS

1. Drawing sheet D2 - Details; Detail 6/D2; Due to product availability, deletion of FL connection fittings for two (2) six inch tangential pipes and replaced with MJ connection fittings as indicated by revision cloud and labeled as "delta 2" in the revision table. Replace sheet D2 with the attached revised D2 sheet in its entirety.

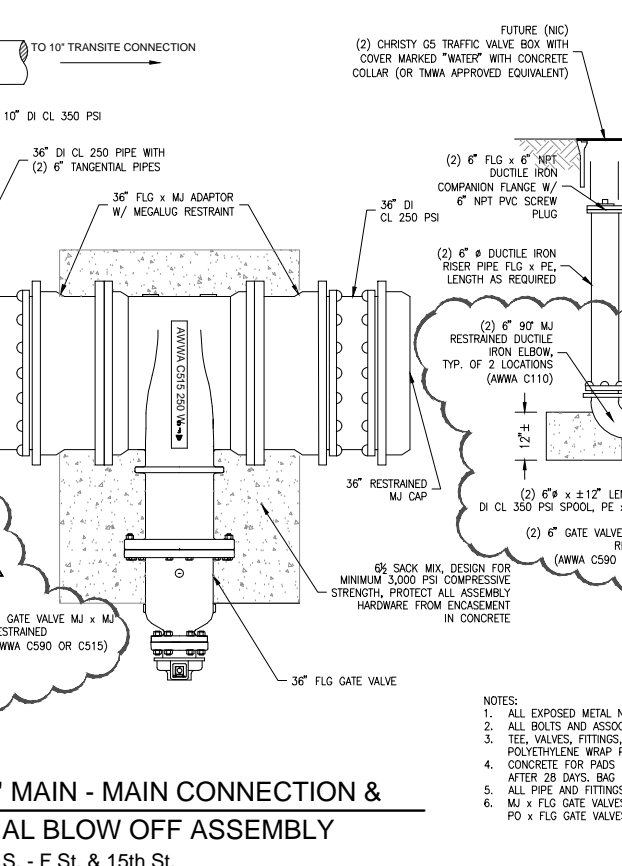
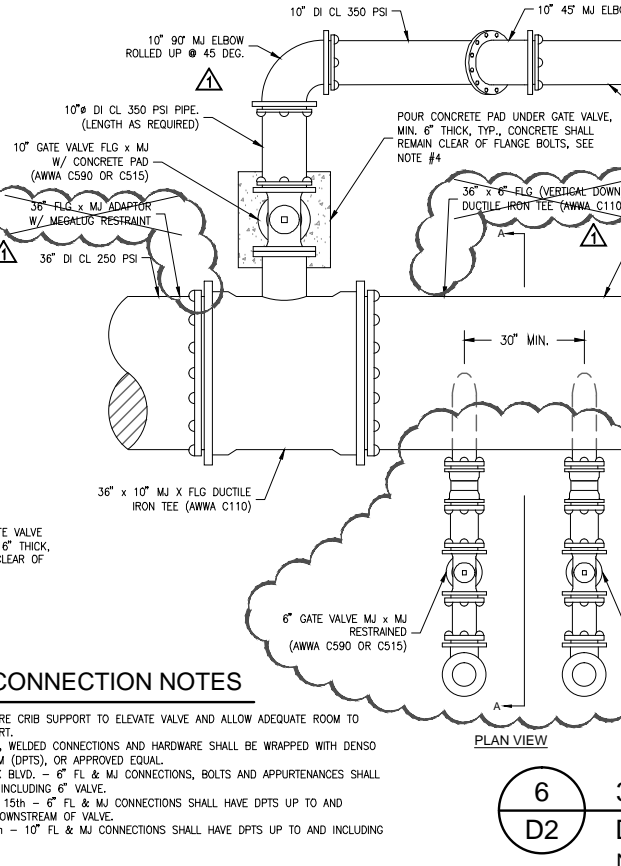
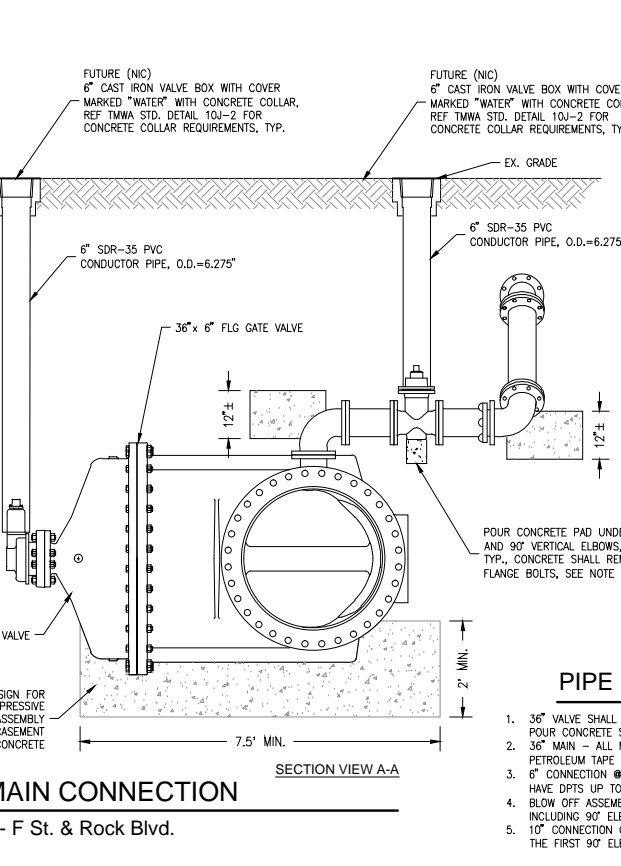
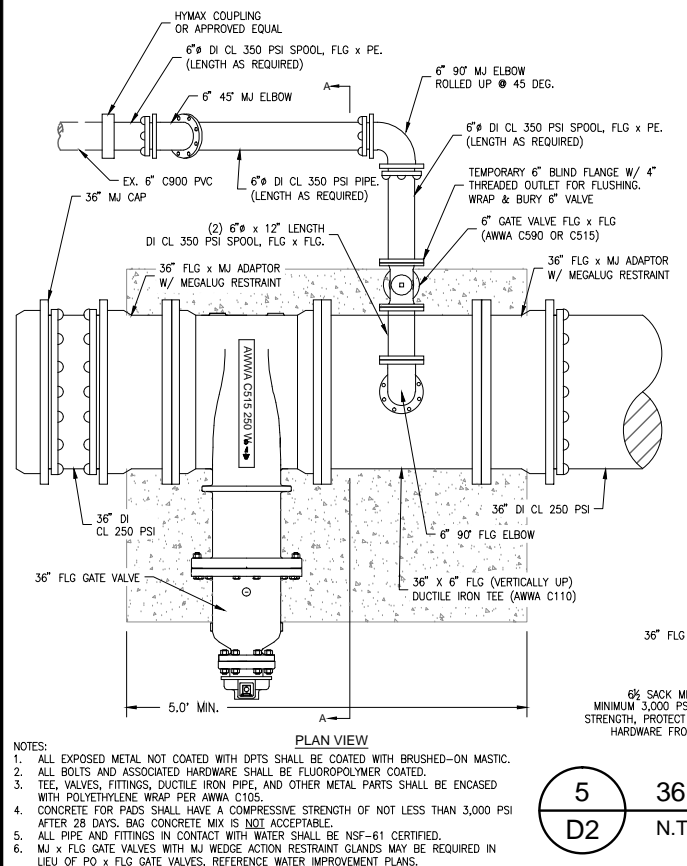
Attachment Included

END OF ADDENDUM



NOTES

- ALL SERVICE SADDLES ON 36" DUCTILE IRON PIPE SHALL BE SMITH BLAIR 366 W/ STAINLESS STRAPS, O.A.E.



PIPE & CONNECTION NOTES

- 36" VALVE SHALL REQUIRE CRIB SUPPORT TO ELEVATE VALVE AND ALLOW ADEQUATE ROOM TO POUR CONCRETE SUPPORT.
- 36" MAIN - ALL MJ, FL, WELDED CONNECTIONS AND HARDWARE SHALL BE WRAPPED WITH DENSE PETROLEUM TAPE SYSTEM (DPTS), OR APPROVED EQUAL.
- 6" CONNECTION @ ROCK BLVD. - 6" FL & MJ CONNECTIONS, BOLTS AND APPURTENANCES SHALL HAVE DPTS UP TO AND INCLUDING 6" VALVE.
- BLOW OFF ASSEMBLY @ 15th - 6" FL & MJ CONNECTIONS SHALL HAVE DPTS UP TO AND INCLUDING 90° ELBOW DOWNSTREAM OF VALVE.
- 10" CONNECTION @ 15th - 10" FL & MJ CONNECTIONS SHALL HAVE DPTS UP TO AND INCLUDING THE FIRST 90° ELBOW.

- NOTES:
- ALL EXPOSED METAL NOT COATED WITH DPTS SHALL BE COATED WITH BRUSHED-ON MASTIC.
 - ALL BOLTS AND ASSOCIATED HARDWARE SHALL BE FLUOROPOLYMER COATED.
 - TEE, VALVES, FITTINGS, DUCTILE IRON PIPE, AND OTHER METAL PARTS SHALL BE ENCASED WITH POLYETHYLENE WRAP PER AWWA C105.
 - CONCRETE FOR PADS SHALL HAVE A COMPRESSIVE STRENGTH OF NOT LESS THAN 3,000 PSI AFTER 28 DAYS. BAG CONCRETE MIX IS NOT ACCEPTABLE.
 - ALL PIPE AND FITTINGS IN CONTACT WITH WATER SHALL BE NSF-61 CERTIFIED.
 - MJ x FLG GATE VALVES WITH MJ WEDGE ACTION RESTRAINT GLANDS MAY BE REQUIRED IN LIEU OF PD x FLG GATE VALVES, REFERENCE WATER IMPROVEMENT PLANS.

REVISION	DESCRIPTION	BY	APP	DATE
1	REVISED DETAIL 6 -- ADDENDA 1	RA		6/2/16
2	REVISED DETAIL 6 -- ADDENDA 2	RA		6/8/16

WORK ORDER NO.	10-0001.040
DESIGNED	RA/AE
DRAWN	AE
DATE	05-16-2016
CHECKED	RA
SUBMITTED	DATE
RECOMMENDED	NAME
APPROVED	NAME

TRUCKEE MEADOWS WATER AUTHORITY

1355 CAPITAL BLVD. / PO BOX 30013
RENO, NEVADA 89520-3013
PH 775-834-8000 / FX 775-834-8003

NOT REPRODUCIBLE

PROPERTY OF TRUCKEE MEADOWS WATER AUTHORITY. RETURN UPON COMPLETION OF PROJECT (Per Homeland Security Act)

WATER MAIN REPLACEMENT PROJECT

F ST. & 16TH ST., SPARKS NV

DETAILS

RUSSELL EVANS APPLIGATE

Exp. 12-31-16

CIVIL

15616 NEVADA

06-08-2016

BID SET

SHEET NUMBER

D2

8 OF 10

V:\Projects\15101.00\Drawings\Sheets\TMAA\D-D-DETAILS.dwg
 Jun 08, 2016 - 11:12am