

ZOLEZZI BPS

ZOLEZZI BOOSTER PUMPS (OPM)		
DESCRIPTION	UNIT	VALUE
TYPE OF PUMP	-	SUBMERSIBLE MULTI-STAGE W/ PITLESS ADAPTER
NUMBER OF PUMP(S)	-	2
CAPACITY EACH	GPM	900
TOTAL DYNAMIC HEAD	FT (PSI)	460 (199)
HORSEPOWER EACH	HP	150
VFD OR SOFT START	-	SOFT START

ZOLEZZI PRESSURE RELIEF		
DESCRIPTION	UNIT	VALUE
MODEL	-	CLA-VAL 50-01
QUANTITY	-	1
SIZE	IN	6
SETTING	PSI	250
LOCATION	-	DISCHARGE BPS
MAX FLOW RATE	GPM	1800

ZOLEZZI SURGE TANK (OPM)		
DESCRIPTION	UNIT	VALUE
TYPE	-	BLADDER
VOLUME	GAL	250
PRECHARGE SETTING	PSI	60
LOCATION	-	DISCHARGE
FLANGE CONNECTION	-	ANSI 300

ZOLEZZI TEST PRESSURES		
DESCRIPTION	UNIT	VALUE
PITLESS CAN TO CV	PSI	400
DISCHARGE PIPING	PSI	350
SUCTION PIPING	PSI	150

STMGID WELL 11 PRS

STMGID WELL 11 PRS - PRESSURE RELIEF		
DESCRIPTION	UNIT	VALUE
MODEL	-	CLA-VAL 50-01
QUANTITY	-	1
SIZE	IN	3
SETTING	PSI	130
MAX FLOW RATE	GPM	460
LOCATION	-	UPSTREAM DUAL PRV'S

STMGID WELL 11 PRS - PRESSURE REDUCING		
DESCRIPTION	UNIT	VALUE
MODEL	-	CLA-VAL 90-01
QUANTITY	-	2 (SERIES)
SIZE	IN	6
UPSTREAM PRESSURE	PSI	130
INTERMEDIATE PRESSURE	PSI	60
DOWNSTREAM PRESSURE	PSI	5
MAX FLOW RATE	GPM	1800

WELCOME WAY PRS

WELCOME WAY PRS - PRESSURE RELIEF		
DESCRIPTION	UNIT	VALUE
MODEL	-	CLA-VAL 50-01
QUANTITY	-	1
SIZE	IN	4
PRESSURE RELIEF SETTING	PSI	100
MAX FLOW RATE	GPM	1800
LOCATION	-	DOWNSTREAM PRV

WELCOME WAY PRS - PRESSURE REDUCING		
DESCRIPTION	UNIT	VALUE
MODEL	-	CLA-VAL 90-01
QUANTITY	-	1
SIZE	IN	6
UPSTREAM PRESSURE	PSI	145
DOWNSTREAM PRESSURE	PSI	70
MAX FLOW RATE	GPM	1800

ARROWCREEK BPS

ARROWCREEK BOOSTER PUMPS (OPM)		
DESCRIPTION	UNIT	VALUE
TYPE OF PUMP	-	SUBMERSIBLE MULTI-STAGE W/ PITLESS ADAPTER
NUMBER OF PUMP(S)	-	2
CAPACITY EACH	GPM	900
TOTAL DYNAMIC HEAD	FT (PSI)	350 (152)
HORSEPOWER EACH	HP	100
VFD OR SOFT START	-	SOFT START

ARROWCREEK PRESSURE RELIEF		
DESCRIPTION	UNIT	VALUE
MODEL	-	CLA-VAL 50-01
QUANTITY	-	1
SIZE	IN	6
SETTING	PSI	270
LOCATION	-	DISCHARGE BPS
MAX FLOW RATE	GPM	1800

ARROWCREEK SURGE TANK (OPM)		
DESCRIPTION	UNIT	VALUE
TYPE	-	BLADDER
VOLUME	GAL	250
PRECHARGE SETTING	PSI	25
LOCATION	-	SUCTION
FLANGE CONNECTION	-	ANSI 150

ARROWCREEK TEST PRESSURES		
DESCRIPTION	UNIT	VALUE
PITLESS CAN TO CV	PSI	400
DISCHARGE PIPING	PSI	350
SUCTION PIPING	PSI	200

(E) ARROWCREEK PRS

(E) ARROWCREEK PRS - PRESSURE RELIEF		
DESCRIPTION	UNIT	VALUE
MODEL	-	CLA-VAL 50-01
QUANTITY	-	1
SIZE	IN	4
SETTING	PSI	100
LOCATION	-	DOWNSTREAM OF PRS
MAX FLOW RATE	GPM	800

(E) ARROWCREEK PRS - PRESSURE REDUCING		
DESCRIPTION	UNIT	VALUE
MODEL	-	CLA-VAL 93-01
QUANTITY	-	1
SIZE	IN	2
UPSTREAM PRESSURE	PSI	N/A
DOWNSTREAM PRESSURE	PSI	73
MAX FLOW RATE	GPM	210

COPPER CLOUD BPS

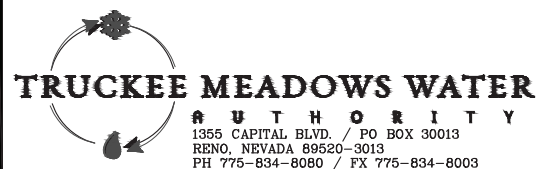
COPPER CLOUD BOOSTER PUMPS (OPM)		
DESCRIPTION	UNIT	VALUE
TYPE OF PUMP	-	SUBMERSIBLE MULTI-STAGE W/ PITLESS ADAPTER
NUMBER OF PUMP(S)	-	2
CAPACITY EACH	GPM	900
TOTAL DYNAMIC HEAD	FT (PSI)	340 (147)
HORSEPOWER EACH	HP	100
VFD OR SOFT START	-	SOFT START

COPPER CLOUD TEST PRESSURES		
DESCRIPTION	UNIT	VALUE
PITLESS CAN TO CV	PSI	275
DISCHARGE PIPING	PSI	200
SUCTION PIPING	PSI	150

V:\2015\Active\201500179\Drawings\GD\GENERAL\00179_G005.dwg By: rmcgill Date: 8/26/15

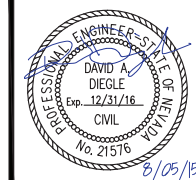
REVISION	DESCRIPTION	BY	APP	DATE
1	ADDENDUM #2	DAD	DAD	8/26/15

WORK ORDER NO.	10-0002
DESIGNED	JPB/DAD
DRAWN	AAA
DATE	AUGUST 2015
CHECKED	RCK
SUBMITTED	
RECOMMENDED	
APPROVED	

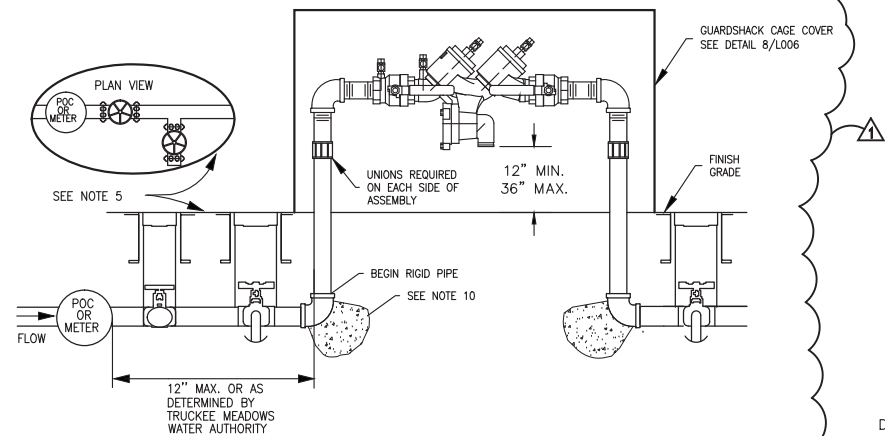


NOT REPRODUCIBLE
PROPERTY OF TRUCKEE MEADOWS WATER AUTHORITY, RETURN UPON COMPLETION OF PROJECT (Per Homeland Security Act)

TMWA ARROWCREEK DROUGHT RESPONSE DESIGN PROJECT
DESIGN CRITERIA



SHEET NUMBER
G005
05 OF 90

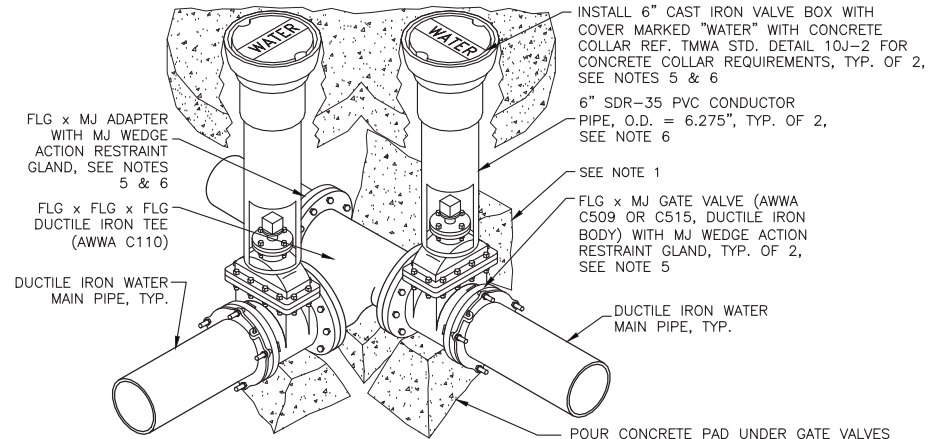


- NOTES:
- ASSEMBLY SHALL BE A USC APPROVED DEVICE.
 - THE RP SHALL BE INSTALLED ABOVE GRADE.
 - EITHER VALVE BOXES OR PIPE RISERS MAY BE USED FOR THE 2 BELOW GRADE SHUT OFF VALVES.
 - MANUAL SHUT OFF VALVE: INLINE BRASS GLOBE OR CURB VALVE SIZED SAME AS MAINLINE.
 - DRAIN CONFIGURATION: INLINE "T" TO BRASS SHUT OFF VALVE WITH RUBBER SEAT & 1/2" 90° EL WITH FEMALE THREADS. ADD 1/2" RED FREEZE KING DRAIN.
 - NO STOP AND WASTE VALVES.
 - DRAINS SHALL HAVE CLEAN GRAVEL BELOW PER LOCAL BUILDING CODES.
 - INSPECTION BY TMWA BACKFLOW PREVENTION GROUP PERSONNEL REQUIRED BEFORE METER IS SET OR SERVICE IS ACTIVATED.
 - IF INITIAL TEST DONE BY TMWA FIELD PERSONNEL FAILS, RETESTING OF BACKFLOW ASSEMBLY IS REQUIRED WITHIN 7 DAYS AFTER METER IS SET OR SERVICE ACTIVATION. COPY OF TEST RESULTS TO BE FORWARDED TO TMWA BACKFLOW PREVENTION GROUP BY A CERTIFIED ASSEMBLY TESTER WITHIN THAT SAME TIMEFRAME.
 - MINIMUM DIMENSIONS FOR THE THRUST BLOCK BEARING AREA FOR PIPE 2" AND SMALLER SHALL BE 8" X 8" AND 12" IN DEPTH. ALL OTHER SIZES TO BE DETERMINED BY ENGINEER.
 - FOR YEAR-ROUND USE REFER TO 10A-2.

REDUCED PRESSURE PRINCIPLE ASSEMBLY FOR IRRIGATION AND CONSTRUCTION WATER USE - HORIZONTAL (MODIFIED)
TRUCKEE MEADOWS WATER AUTHORITY (REV 7/2011) NTS

10A-2
TYP

- NOTES:
- REFERENCE TMWA STANDARD DETAIL 10L-2 FOR THRUST BLOCK SIZING AND REQUIREMENTS.
 - ALL BOLTS AND EXPOSED METAL SHALL BE COATED WITH BRUSHED-ON OR SPRAY MASTIC.
 - TEE, VALVES, FITTINGS, DUCTILE IRON PIPE AND OTHER METAL PARTS SHALL BE ENCASED WITH POLYETHYLENE WRAP PER AWWA C105.
 - CONCRETE FOR PADS SHALL HAVE A COMPRESSIVE STRENGTH OF NOT LESS THAN 3,000 PSI AFTER 28 DAYS. BAG CONCRETE MIX IS NOT ACCEPTABLE.
 - POSITION OF FLG x MJ VALVE (RUN) AND FLG x MJ ADAPTER MAY SWITCH, REFERENCE WATER IMPROVEMENT PLANS.
 - AN ADDITIONAL FLG x MJ VALVE MAY BE REQUIRED IN LIEU OF FLG x MJ ADAPTER, REF. WATER IMPROVEMENT PLANS.



QTY. DESCRIPTION

1	FLG x FLG x FLG DUCTILE IRON TEE (AWWA C110)
2	FLG x MJ GATE VALVE WITH DUCTILE IRON BODY (AWWA C509 OR C515)
1	FLG x MJ ADAPTER
3	MJ WEDGE ACTION RESTRAINT GLAND
2	6" CAST IRON VALVE BOX WITH COVER MARKED "WATER"
2	6" SDR-35 PVC CONDUCTOR PIPE SECTION, O.D. = 6.275"
-	CONCRETE BULK - THRUST BLOCKS, PADS, COLLARS

DISTRIBUTION BRANCH INSTALLATIONS FLANGED TEES FLG X MJ GATE VALVES-RESTRAINED
TRUCKEE MEADOWS WATER AUTHORITY (REV 7/2011) NTS

10B-2
TYP

- NOTES:
- COUPLINGS SHALL BE HYMAX 2000 SERIES COUPLINGS AS MANUFACTURED BY TOTAL PIPING SOLUTIONS, INC. OR TMWA APPROVED EQUIVALENT.
 - SNAP MACHINED END OFF TRANSITE (AC) PIPE TO EXPOSE ROUGH BARREL. INSTALL COUPLING ON ROUGH BARREL SECTION OF TRANSITE PIPE.
 - FIELD MEASURE ACTUAL PIPE O.D. PRIOR TO ORDERING COUPLING. FOR OTHER TYPES OF PIPE NOT LISTED IN THE CHARTS BELOW AND/OR PIPE O.D.'S WHICH MAY DIFFER FROM THOSE LISTED BELOW, CONSULT MANUFACTURER'S SIZING CHART.

TYPE OF PIPE	6" C900 PVC (C900) 6" DUCTILE IRON (DI)		6" TRANSITE (AC) ROUGH BARREL CLASS 100/150/200	
6" C900 PVC (C900)	HYMAX COUPLING PART NO. 2000-0768-260	LOW RANGE (C900, DI) 6.42 - 7.05 HIGH RANGE (AC) 7.01 - 7.68	HYMAX COUPLING PART NO. 2000-0768-260	HIGH RANGE (AC) 7.01 - 7.68
6" DUCTILE IRON (DI)	HYMAX COUPLING PART NO. 2000-0768-260	LOW RANGE (C900, DI) 6.42 - 7.05	HYMAX COUPLING PART NO. 2000-0768-260	HIGH RANGE (AC) 7.01 - 7.68
6" TRANSITE (AC) ROUGH BARREL CLASS 100/150/200	HYMAX COUPLING PART NO. 2000-0768-260	LOW RANGE (C900, DI) 6.42 - 7.05 HIGH RANGE (AC) 7.01 - 7.68	HYMAX COUPLING PART NO. 2000-0768-260	HIGH RANGE (AC) 7.01 - 7.68

TYPE OF PIPE	8" C900 PVC (C900) 8" DUCTILE IRON (DI)		8" TRANSITE (AC) ROUGH BARREL CLASS 100/150/200	
8" C900 PVC (C900)	HYMAX COUPLING PART NO. 2000-0984-260	LOW RANGE (C900, DI) 8.54 - 9.17 HIGH RANGE (AC) 9.13 - 9.84	HYMAX COUPLING PART NO. 2000-0984-260	HIGH RANGE (AC) 9.13 - 9.84
8" DUCTILE IRON (DI)	HYMAX COUPLING PART NO. 2000-0984-260	LOW RANGE (C900, DI) 8.54 - 9.17	HYMAX COUPLING PART NO. 2000-0984-260	HIGH RANGE (AC) 9.13 - 9.84
8" TRANSITE (AC) ROUGH BARREL CLASS 100/150/200	HYMAX COUPLING PART NO. 2000-0984-260	LOW RANGE (C900, DI) 8.54 - 9.17 HIGH RANGE (AC) 9.13 - 9.84	HYMAX COUPLING PART NO. 2000-0984-260	HIGH RANGE (AC) 9.13 - 9.84

TYPE OF PIPE	10" C900 PVC (C900) 10" DUCTILE IRON (DI)		10" TRANSITE (AC) ROUGH BARREL CLASS 100/150		10" TRANSITE (AC 200) ROUGH BARREL - CLASS 200	
10" C900 PVC (C900)	HYMAX COUPLING PART NO. 2000-1226-260	LOW RANGE (C900, DI) 10.96 - 11.63 HIGH RANGE (AC) 10.96 - 11.63	HYMAX COUPLING PART NO. 2000-1226-260	LOW RANGE (AC) 10.96 - 11.63 HIGH RANGE (AC 200) 11.59 - 12.26	HYMAX COUPLING PART NO. 2000-1226-260	HIGH RANGE (AC 200) 11.59 - 12.26
10" DUCTILE IRON (DI)	HYMAX COUPLING PART NO. 2000-1226-260	LOW RANGE (C900, DI) 10.96 - 11.63	HYMAX COUPLING PART NO. 2000-1226-260	LOW RANGE (AC) 10.96 - 11.63 HIGH RANGE (AC 200) 11.59 - 12.26	HYMAX COUPLING PART NO. 2000-1226-260	HIGH RANGE (AC 200) 11.59 - 12.26
10" TRANSITE (AC) ROUGH BARREL CLASS 100/150	HYMAX COUPLING PART NO. 2000-1226-260	LOW RANGE (C900, DI) 10.96 - 11.63 HIGH RANGE (AC) 10.96 - 11.63	HYMAX COUPLING PART NO. 2000-1226-260	LOW RANGE (AC) 10.96 - 11.63 HIGH RANGE (AC 200) 11.59 - 12.26	HYMAX COUPLING PART NO. 2000-1226-260	HIGH RANGE (AC 200) 11.59 - 12.26
10" TRANSITE (AC 200) ROUGH BARREL CLASS 200	HYMAX COUPLING PART NO. 2000-1226-260	LOW RANGE (C900, DI) 10.96 - 11.63 HIGH RANGE (AC 200) 11.59 - 12.26	HYMAX COUPLING PART NO. 2000-1226-260	LOW RANGE (AC) 10.96 - 11.63 HIGH RANGE (AC 200) 11.59 - 12.26	HYMAX COUPLING PART NO. 2000-1226-260	HIGH RANGE (AC 200) 11.59 - 12.26

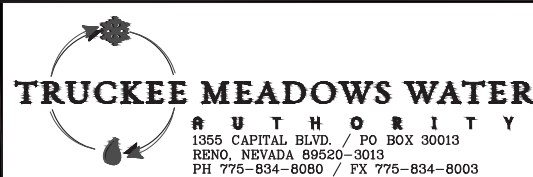
TYPE OF PIPE	12" C900 PVC (C900) 12" DUCTILE IRON (DI)		12" TRANSITE (AC) ROUGH BARREL CLASS 100/150/200	
12" C900 PVC (C900)	HYMAX COUPLING PART NO. 2000-1441-260	LOW RANGE (C900, DI) 13.15 - 13.78 HIGH RANGE (AC) 13.15 - 13.78	HYMAX COUPLING PART NO. 2000-1441-260	HIGH RANGE (AC) 13.74 - 14.41
12" DUCTILE IRON (DI)	HYMAX COUPLING PART NO. 2000-1441-260	LOW RANGE (C900, DI) 13.15 - 13.78	HYMAX COUPLING PART NO. 2000-1441-260	HIGH RANGE (AC) 13.74 - 14.41
12" TRANSITE (AC) ROUGH BARREL CLASS 100/150/200	HYMAX COUPLING PART NO. 2000-1441-260	LOW RANGE (C900, DI) 13.15 - 13.78 HIGH RANGE (AC) 13.74 - 14.41	HYMAX COUPLING PART NO. 2000-1441-260	HIGH RANGE (AC) 13.74 - 14.41

DISTRIBUTION TRANSITION FITTINGS HYMAX 2000 SERIES COUPLING CHART
TRUCKEE MEADOWS WATER AUTHORITY (REV 7/2011) NTS

10C-2
TYP

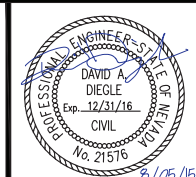
REVISION	DESCRIPTION	BY	APP	DATE
▲	ADDENDUM #2	DAD	DAD	8/26/15

WORK ORDER NO.	10-0002
DESIGNED	JPB/DAD
DRAWN	AAA
DATE	AUGUST 2015
CHECKED	RCK
SUBMITTED	
RECOMMENDED	
APPROVED	



NOT REPRODUCIBLE
PROPERTY OF TRUCKEE MEADOWS WATER AUTHORITY, RETURN UPON COMPLETION OF PROJECT
(Per Homeland Security Act)

TMWA ARROWCREEK DROUGHT RESPONSE DESIGN PROJECT
TMWA TYPICAL CIVIL DETAILS



SHEET NUMBER

C001

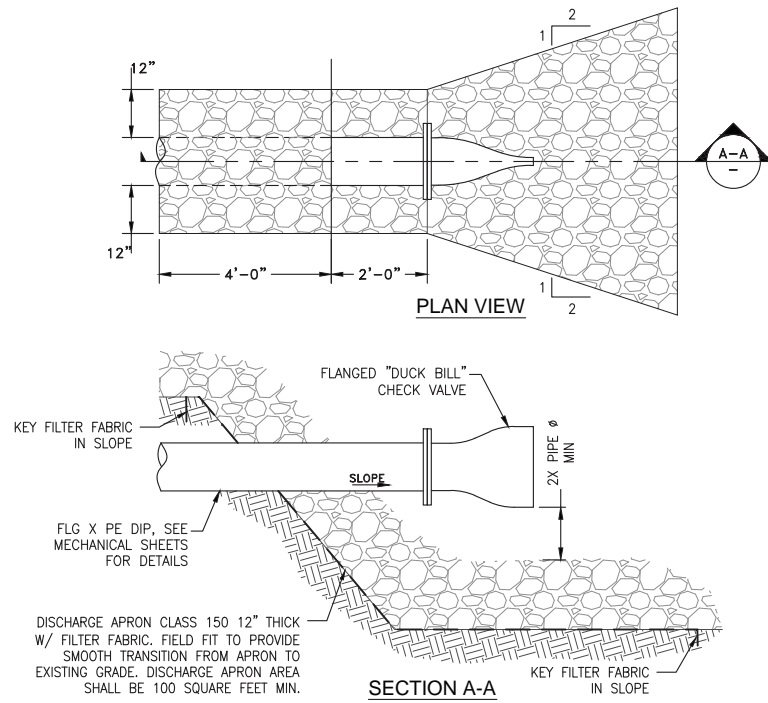
13 OF 90

TAP SIZE - FLANGED BRANCH							
MAIN SIZE	VENDOR	MAIN TYPE	4"	6"	8"	10"	12"
4"	SM ROM	DI/CI PVC	663-04800400-200 SST-4.90 x 4" FL				
6"	SM ROM	DI/CI PVC	663-06630400-000 SST-7.00 x 4" FL	663*06630600-200 SST-7.00 x 6" FL			
	SM ROM	TR	663-(OD)400-000 SST-(OD) x 4" FL	663-(OD)0600-200 SST-(OD) x 6" FL			
8"	SM ROM	DI/CI PVC	663-09050400-000 SST-9.06 x 4" FL	663-09050600-000 SST-9.06 x 6" FL	663-09050800-200 SST-9.06 x 8" FL		
	SM ROM	TR	663-(OD)0400-000 SST-(OD) x 4" FL	663-(OD)0600-000 SST-(OD) x 6" FL	663-(OD)0800-200 SST-(OD) x 8" FL		
10"	SM ROM	SCH 40 STEEL	663-08630400-000 SST-8.63 x 4" FL	663-08630600-000 SST-8.63 x 6" FL	663-08630800-200 SST-8.63 x 8" FL		
	SM ROM	DI/CI PVC	663-11100400-000 SST-11.45 x 4" FL	663-11100600-000 SST-11.45 x 6" FL	663-11100800-000 SST-11.45 x 8" FL	663-11101000-200 SST-11.45 x 10" FL	
12"	SM ROM	TR	663-(OD)0400-000 SST-(OD) x 4" FL	663-(OD)0600-000 SST-(OD) x 6" FL	663-(OD)0800-000 SST-(OD) x 8" FL	66-(OD)1000-200 SST-(OD) x 10" FL	
	SM ROM	SCH 40 STEEL	663-10750400-000 SST-11.13 x 4" FL	663-10750600-000 SST-11.13 x 6" FL	663-10750800-000 SST-11.13 x 8" FL	663-10751000-200 SST-11.13 x 10" FL	
12"	SM ROM	DI/CI PVC	663-10750400-000 SST-13.30 x 4" FL	663-13200600-000 SST-13.30 x 6" FL	663-13200800-000 SST-13.30 x 8" FL	663-13201000-000 SST-13.30 x 10" FL	663-13201200-200 SST-13.30 x 12" FL
	SM ROM	TR	663-(OD)0400-000 SST-(OD) x 4" FL	663-(OD)0600-000 SST-(OD) x 6" FL	663-(OD)0800-00004 SST-(OD) x 8" FL	663-(OD)1000-000 SST-(OD) x 10" FL	663-(OD)1200-200 SST-(OD) x 12" FL
SM ROM	SCH 40 STEEL	663-12750400-000 SST-12.85 x 4" FL	663-12750600-000 SST-12.85 x 6" FL	663-12750800-000 SST-12.85 x 8" FL	663-12751000-000 SST-12.85 x 10" FL	663-12751200-200 SST-12.85 x 12" FL	

- NOTES:
- MAXIMUM TEST PRESSURE IS 300 PSI FOR LISTED MANUFACTURERS.
 - FLANGES (FL) SHALL BE STAINLESS STEEL ASTM A 240, TYPE 304.
 - VENDOR (MANUFACTURER): SM = SMITH-BLAIR, ROM = ROMAC INDUSTRIES
 - (OD) = PIPE OUTSIDE DIAMETER. CHECK WITH MANUFACTURER FOR CATALOG NUMBER FOR OTHER SIZES.
 - FOR TAPS ON TRANSITE MAINS OD MUST BE FIELD MEASURED PRIOR TO ORDERING PARTS.

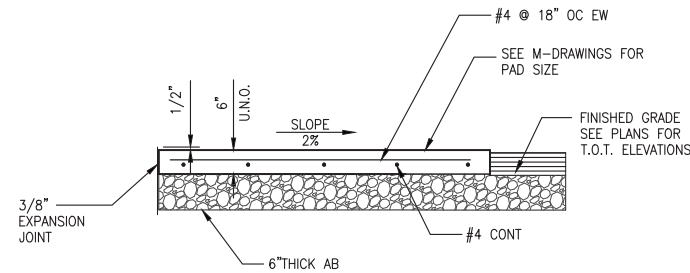
DISTRIBUTION TAP INSTALLATIONS WATER TAPPING SLEEVES
TRUCKEE MEADOWS WATER AUTHORITY (REV 7/2011) NTS

10D-2
TYP



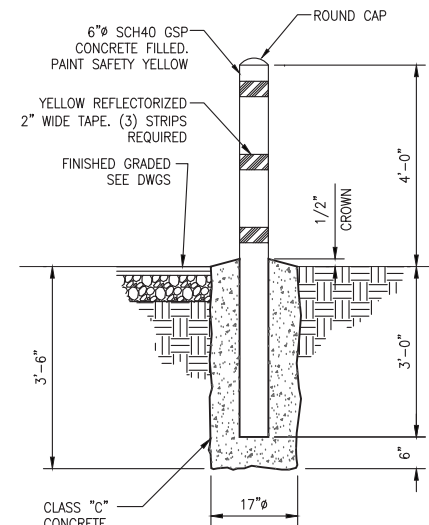
TYPICAL DRAINAGE OUTLET
NTS

C615
TYP



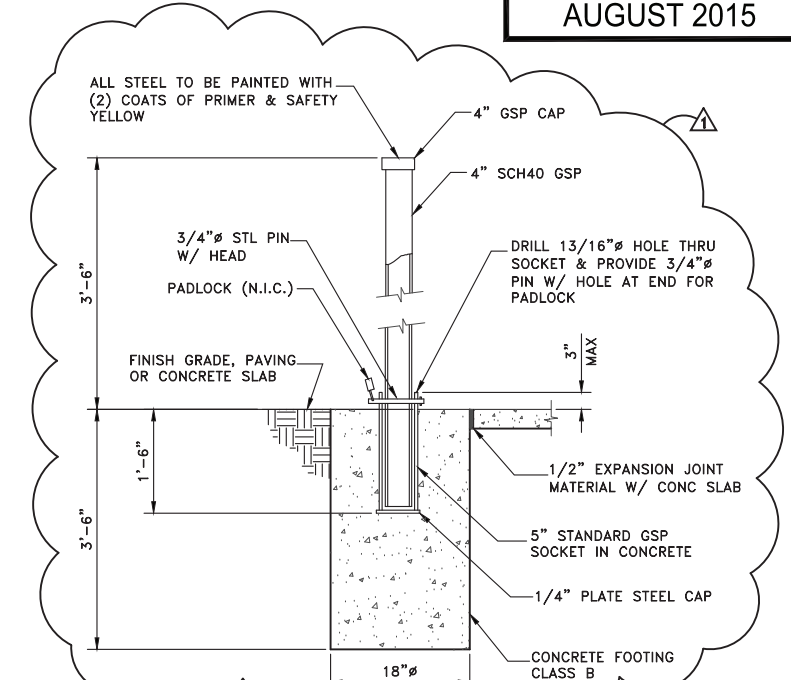
TYPICAL CONCRETE PAD
NTS

C650
TYP



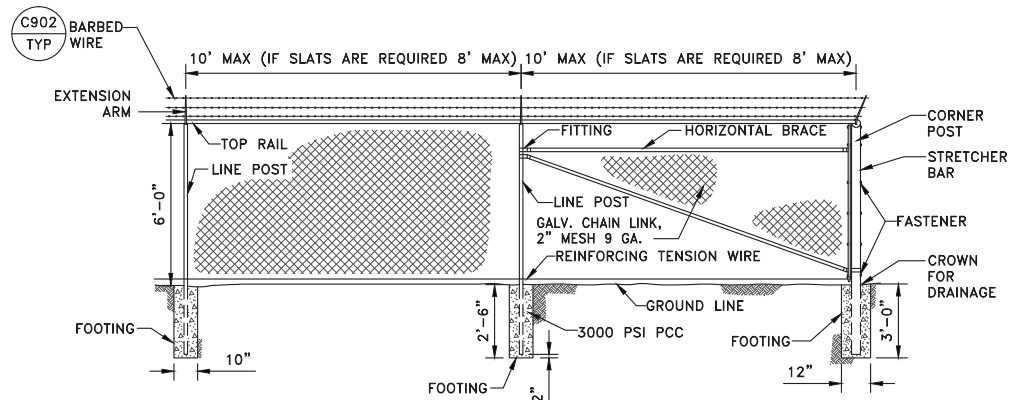
PERMANENT BOLLARD
NTS

C800
TYP



REMOVABLE BOLLARD
NTS

C801
TYP



ELEVATION

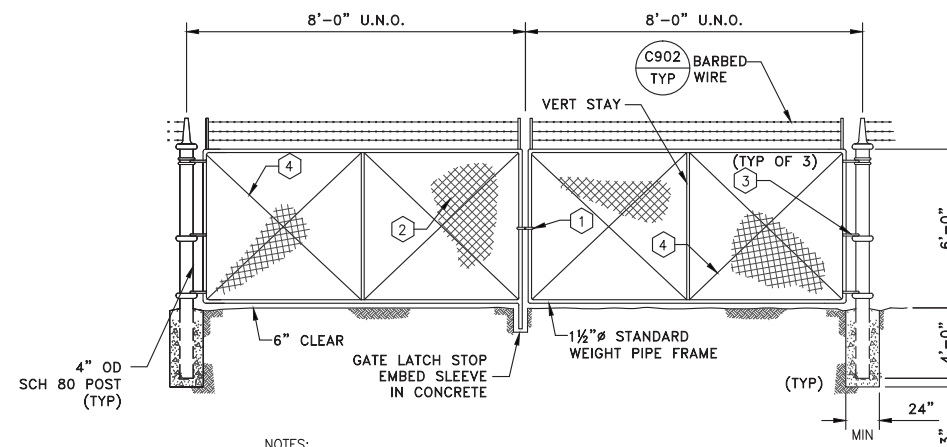
NOTES:

- FENCING SHALL BE CHAIN LINK AND SHALL CONSIST OF CHAIN LINK FABRIC W/ BLACK VINYL COATING ON CHAIN LINK AND STEEL POSTS.
 - ALL POST TOPS SHALL BE FITTED WITH SUITABLE FINIALS.
 - BRACES SHALL BE SPACED APPROXIMATELY 12" BELOW TOP OF TERMINAL POSTS AND SHALL EXTEND FROM CORNER POSTS TO ADJACENT LINE POSTS.
 - TOP AND BOTTOM SELVAGES OF THE FENCE SHALL HAVE A TWISTED AND BARBED FINISH.
 - BARBED WIRE, EXTENSION ARMS, AND TOP HORIZONTAL RAILS SHALL BE INSTALLED.
- ALL VISIBLE PORTIONS OF THE FENCE SHALL BE VINYL OR POWDER COATED.
- CHAIN LINK FABRIC SHALL BE 9 GAUGE STEEL WIRE W/ A BLACK VINYL COATING. TENSION WIRE SHALL BE 7 GAUGE STEEL WIRE W/ A BLACK VINYL COATING.
- ALL POSTS & BRACES SHALL HAVE A BLACK VINYL COATING.
- AT A MINIMUM FENCE MATERIAL AND INSTALL SHALL CONFORM TO SECTION 209.00 OF SSPWC.

LOCATION	MIN. SIZE
CORNER	2.875" O.D.
LINE	2.375" O.D.
BRACES	1.625" O.D.
TOP RAIL	1.625" O.D.

CHAIN LINK FENCE
NTS

C900
TYP

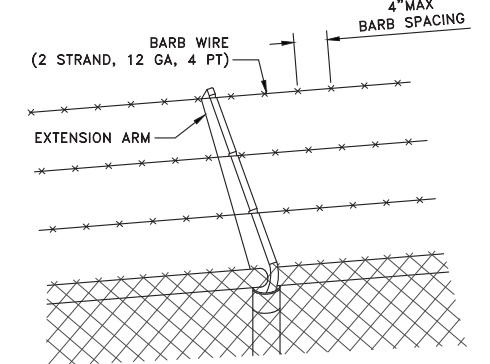


NOTES:

- COMMERCIAL HEAVY DUTY LATCH
- 9 GA. STEEL WIRE CHAIN LINK W/ BLACK VINYL COATING
- 3 HEAVY DUTY HINGES (TYP.)
- 1 1/2" DIAGONAL OR 3/8" ROD W/ TURNBUCKLE
- ALL GATE MATERIALS SHALL HAVE A BLACK VINYL COATING OVER THE SIZES INDICATED IN THIS DETAIL.
- AT A MINIMUM FENCE MATERIAL AND INSTALL SHALL CONFORM TO SECTION 209.00 OF SSPWC.

DOUBLE SWING GATE
NTS

C901
TYP



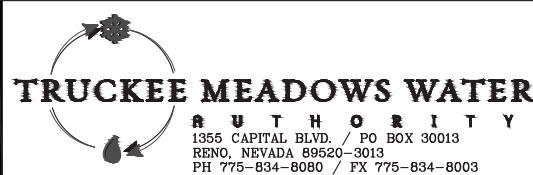
BARBED WIRE
NTS

C902
TYP

V:\2015\Active\20150303\19\Drawings\Detail\CHA\000179_C001.dwg By:arag, Allison

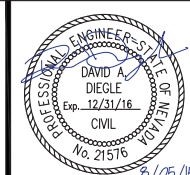
REVISION	DESCRIPTION	BY	APP	DATE
▲	ADDENDUM #2	DAD	DAD	8/26/15

WORK ORDER NO.	10-0002
DESIGNED	JPB/DAD
DRAWN	AAA
DATE	AUGUST 2015
CHECKED	RCK
SUBMITTED	
RECOMMENDED	
APPROVED	



NOT REPRODUCIBLE
PROPERTY OF TRUCKEE MEADOWS WATER AUTHORITY, RETURN UPON COMPLETION OF PROJECT (Per Homeland Security Act)

TMWA ARROWCREEK DROUGHT RESPONSE DESIGN PROJECT
TYPICAL CIVIL DETAILS



SHEET NUMBER
C009
21 OF 90