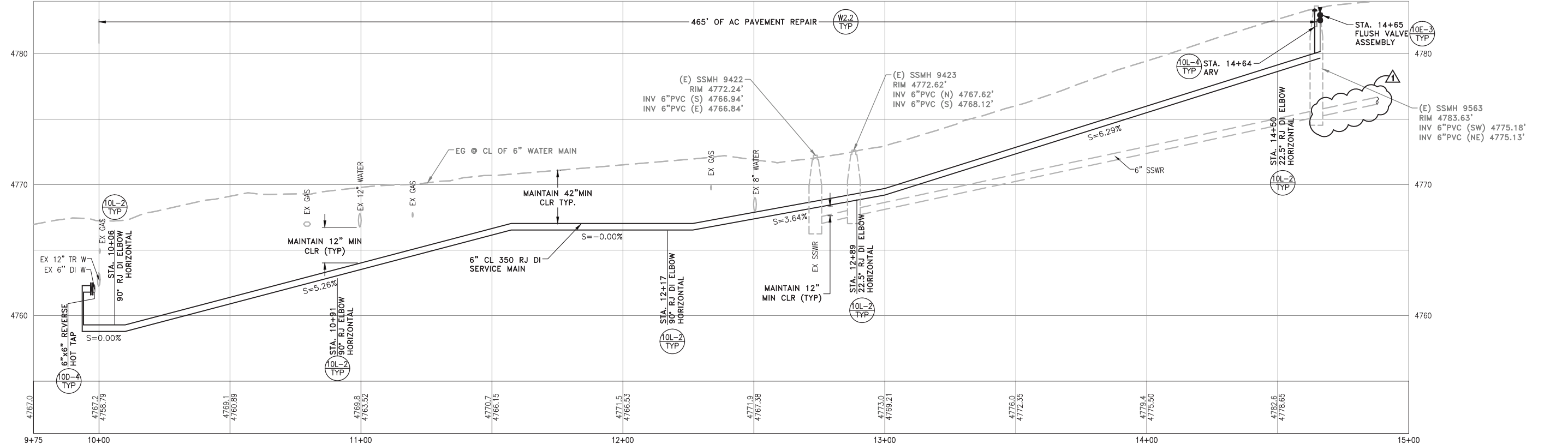
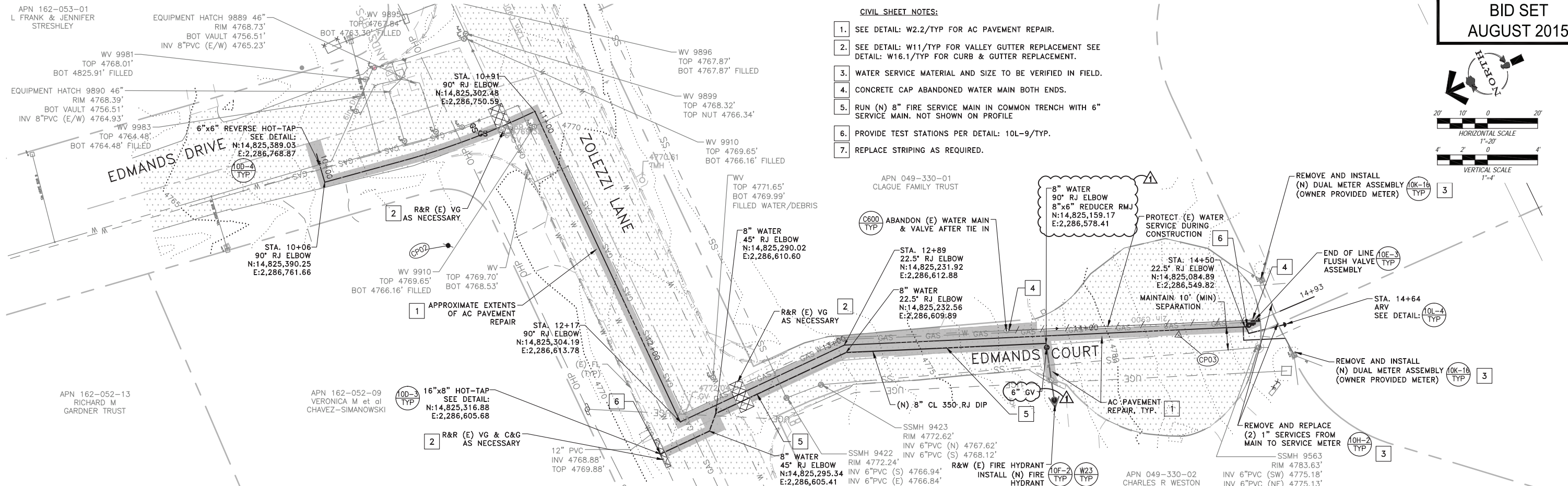
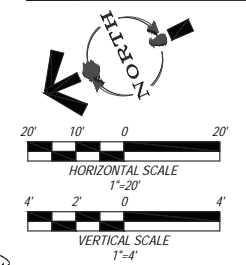


APN 162-053-01
L FRANK & JENNIFER
STRESHLEY

BID SET
AUGUST 2015

- CIVIL SHEET NOTES:**
1. SEE DETAIL: W2.2/TYP FOR AC PAVEMENT REPAIR.
 2. SEE DETAIL: W11/TYP FOR VALLEY GUTTER REPLACEMENT SEE DETAIL: W16.1/TYP FOR CURB & GUTTER REPLACEMENT.
 3. WATER SERVICE MATERIAL AND SIZE TO BE VERIFIED IN FIELD.
 4. CONCRETE CAP ABANDONED WATER MAIN BOTH ENDS.
 5. RUN (N) 8" FIRE SERVICE MAIN IN COMMON TRENCH WITH 6" SERVICE MAIN. NOT SHOWN ON PROFILE
 6. PROVIDE TEST STATIONS PER DETAIL: 10L-9/TYP.
 7. REPLACE STRIPING AS REQUIRED.



REVISION	DESCRIPTION	BY	APP	DATE
▲	ADDENDUM #2	DAD	DAD	8/26/15

WORK ORDER NO.	10-0002
DESIGNED	JPB/DAD
DRAWN	AAA
DATE	AUGUST 2015
CHECKED	RCK
SUBMITTED	
RECOMMENDED	
APPROVED	

TRUCKEE MEADOWS WATER AUTHORITY
 1355 CAPITAL BLVD. / PO BOX 30013
 RENO, NEVADA 89520-3013
 PH 775-834-8080 / FX 775-834-8003

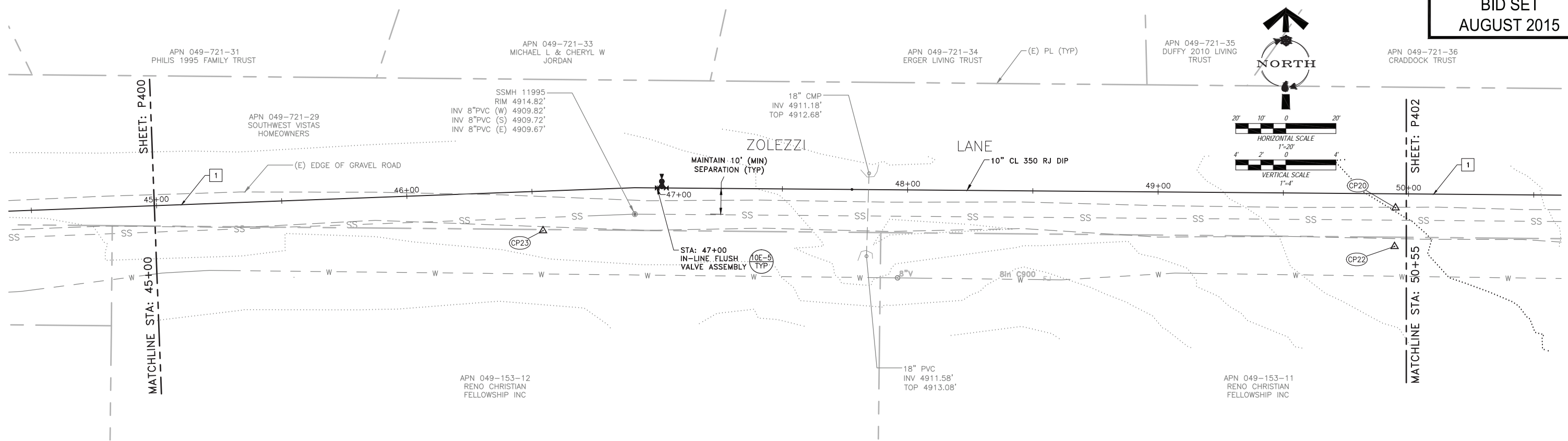
NOT REPRODUCIBLE
PROPERTY OF TRUCKEE MEADOWS WATER AUTHORITY, RETURN UPON COMPLETION OF PROJECT (Per Homeland Security Act)

TMWA ARROWCREEK DROUGHT RESPONSE DESIGN PROJECT
EDMANDS COURT 6" WATER SERVICE PLAN & PROFILE

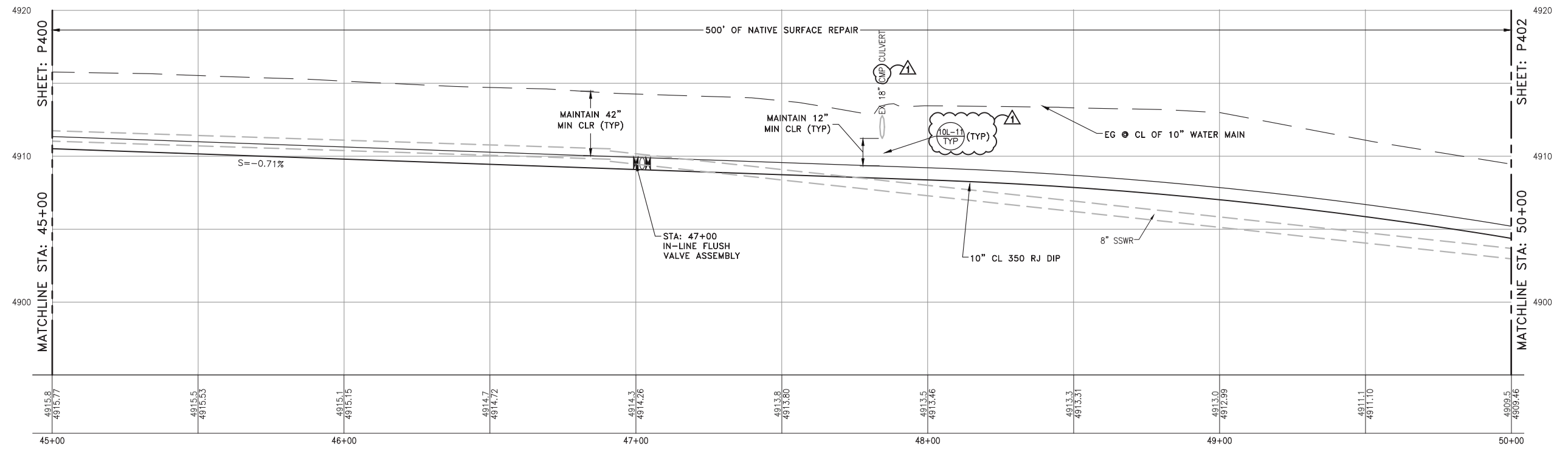
DAVID DIEGLE
 No. 21576
 8/05/15

SHEET NUMBER
P300
29 OF 90

V:\2015\Arrows\20150803\TMWA\Drawings\Civil\0017_P300.dwg By: jpb Date: 8/26/15



1. PROVIDE TEST STATIONS PER DETAIL: 10L-9/TYP.



REVISION	DESCRIPTION	BY	APP	DATE
▲	ADDENDUM #2	DAD	DAD	8/26/15

WORK ORDER NO.	10-0002
DESIGNED	JPB/DAD
DRAWN	AAA
DATE	AUGUST 2015
CHECKED	RCK
SUBMITTED	
RECOMMENDED	
APPROVED	

TRUCKEE MEADOWS WATER AUTHORITY
 1355 CAPITAL BLVD. / PO BOX 30013
 RENO, NEVADA 89520-3013
 PH 775-834-8080 / FX 775-834-8003

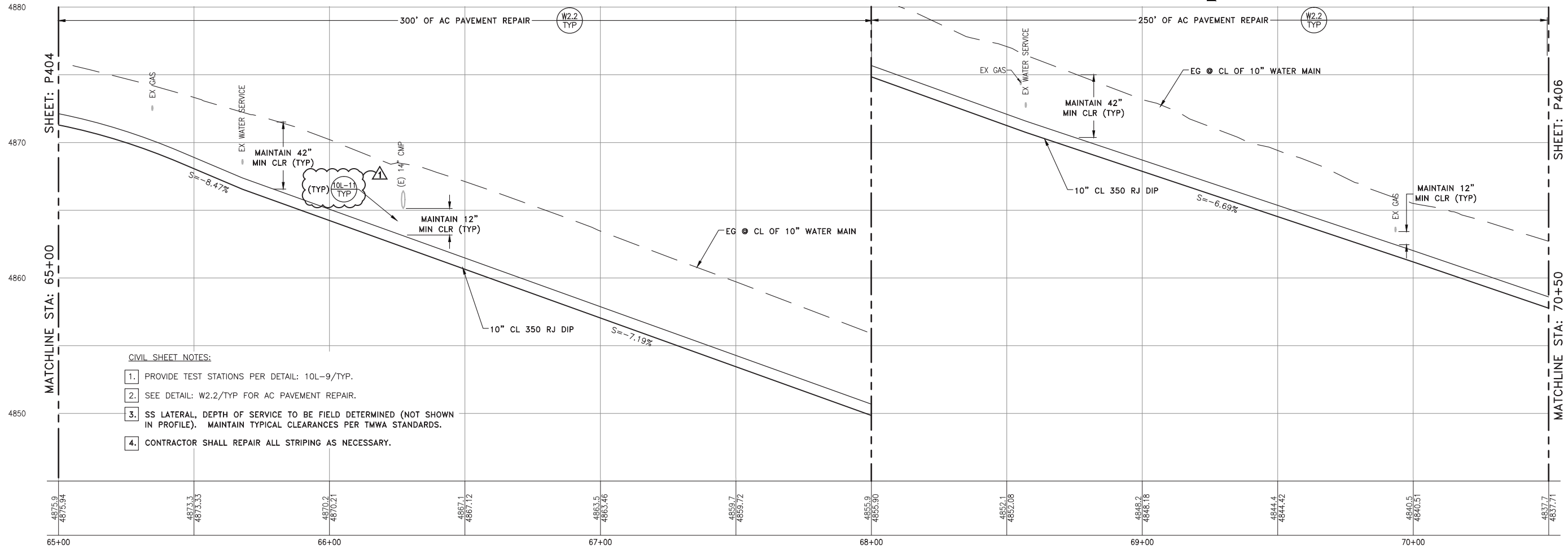
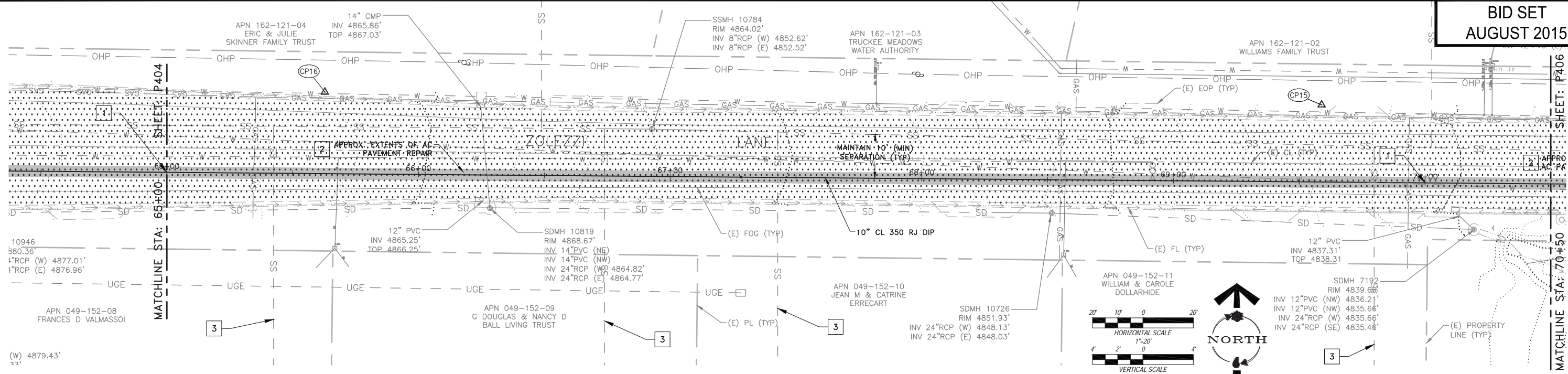
NOT REPRODUCIBLE
 PROPERTY OF TRUCKEE MEADOWS WATER AUTHORITY, RETURN UPON COMPLETION OF PROJECT (Per Homeland Security Act)

TMWA ARROWCREEK DROUGHT RESPONSE DESIGN PROJECT
10" WATER P&P
STA: 45+00 TO 50+00

PROFESSIONAL ENGINEER - STATE OF NEVADA
 DAVID DIEGLE
 Exp. 12/31/16
 CIVIL
 No. 21576
 8/05/15

SHEET NUMBER
P401
 31 OF 90


V:\2015\Arrows\20150803\TMWA\Drawings\CHL\00117_P401.dwg By: jpb, rck, aaron
 TMWA_Map5monoc.ctb



- CIVIL SHEET NOTES:**
1. PROVIDE TEST STATIONS PER DETAIL: 10L-9/TYP.
 2. SEE DETAIL: W2.2/TYP FOR AC PAVEMENT REPAIR.
 3. SS LATERAL, DEPTH OF SERVICE TO BE FIELD DETERMINED (NOT SHOWN IN PROFILE). MAINTAIN TYPICAL CLEARANCES PER TMWA STANDARDS.
 4. CONTRACTOR SHALL REPAIR ALL STRIPING AS NECESSARY.

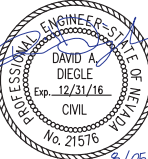
REVISION	DESCRIPTION	BY	APP	DATE
▲	ADDENDUM #2	DAD	DAD	8/26/15

WORK ORDER NO.	10-0002
DESIGNED	JPB/DAD
DRAWN	AAA
DATE	AUGUST 2015
CHECKED	RCK
SUBMITTED	
RECOMMENDED	
APPROVED	


TRUCKEE MEADOWS WATER AUTHORITY
 1355 CAPITAL BLVD. / PO BOX 30013
 RENO, NEVADA 89520-3013
 PH 775-834-8080 / FX 775-834-8003

NOT REPRODUCIBLE
PROPERTY OF TRUCKEE MEADOWS WATER AUTHORITY, RETURN UPON COMPLETION OF PROJECT (Per Homeland Security Act)

TMWA ARROWCREEK DROUGHT RESPONSE DESIGN PROJECT
10" WATER P&P
STA: 65+00 TO 70+00

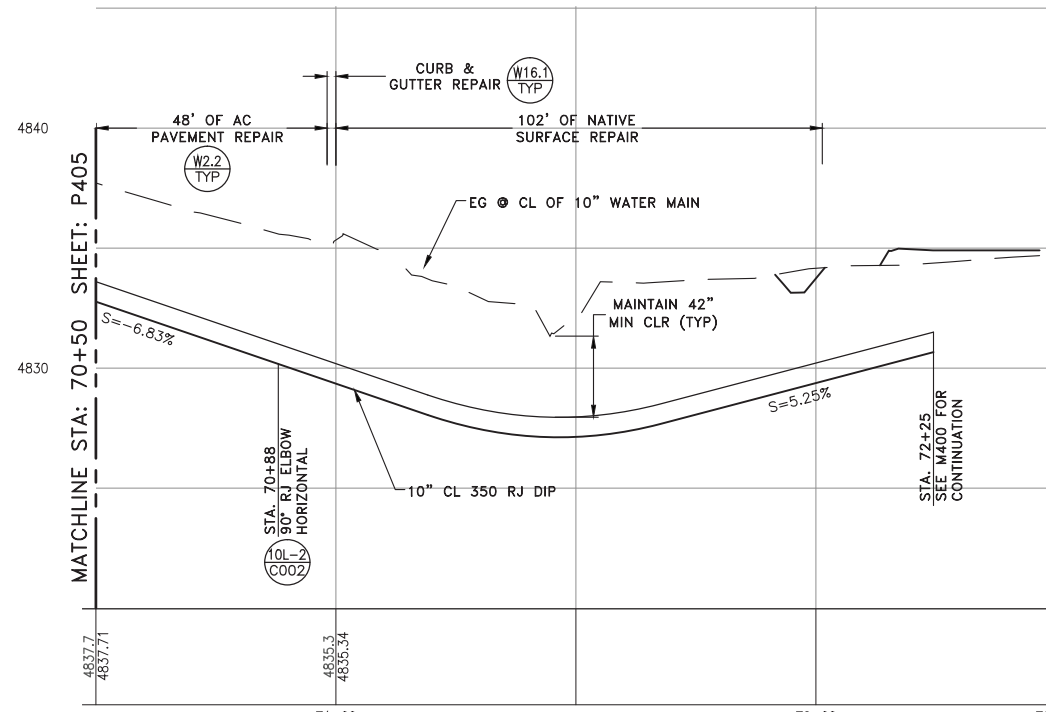
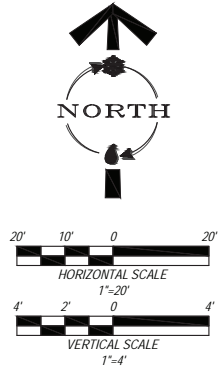

 DAVID DIEGLE
 No. 21576
 CIVIL
 8/05/15

SHEET NUMBER
P405
35 OF 90

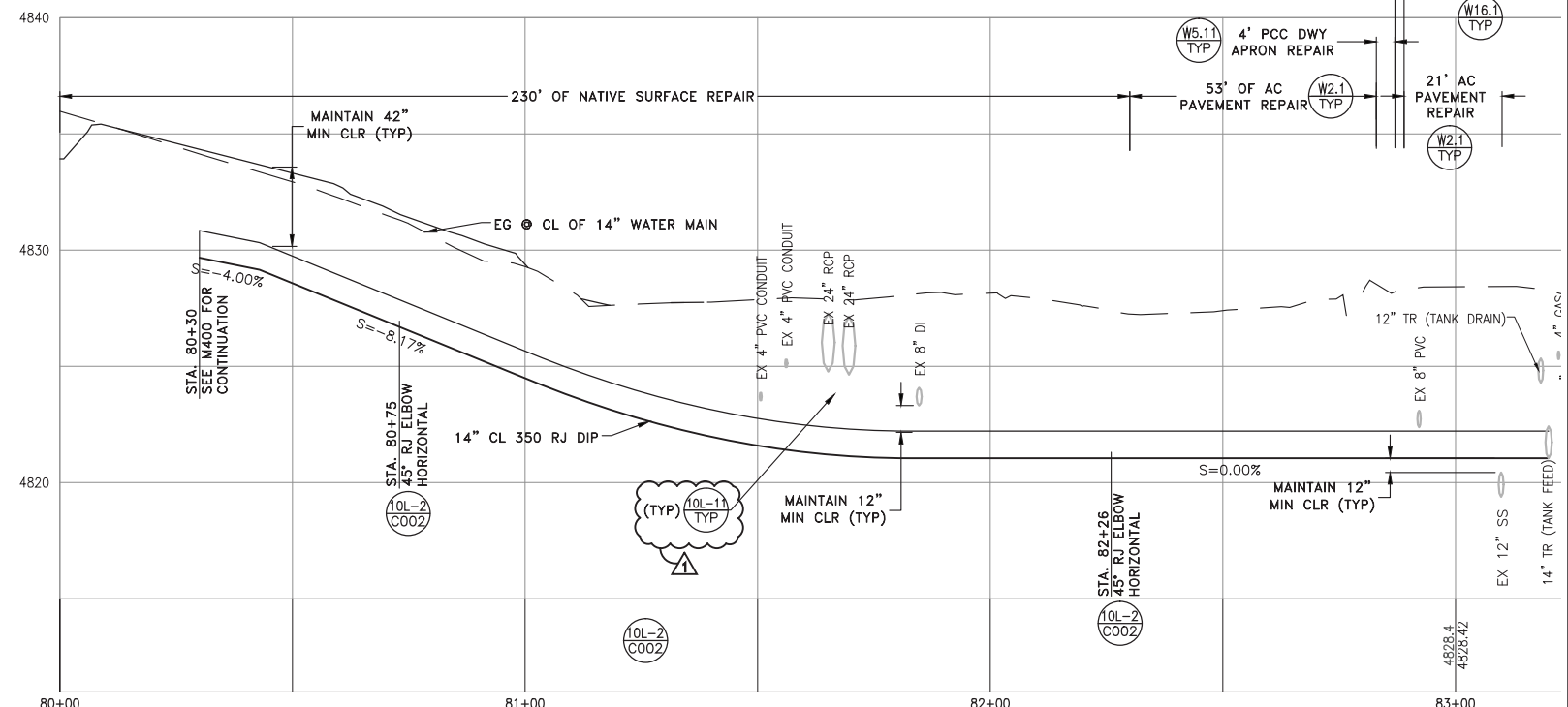
V:\2015\Arrows\20150803\TMWA\Drawings\Sheet\CH1\0017_P&P.dwg By: jpb, rck, alison
 TMWA_Map5mon.ctb

CIVIL SHEET NOTES:

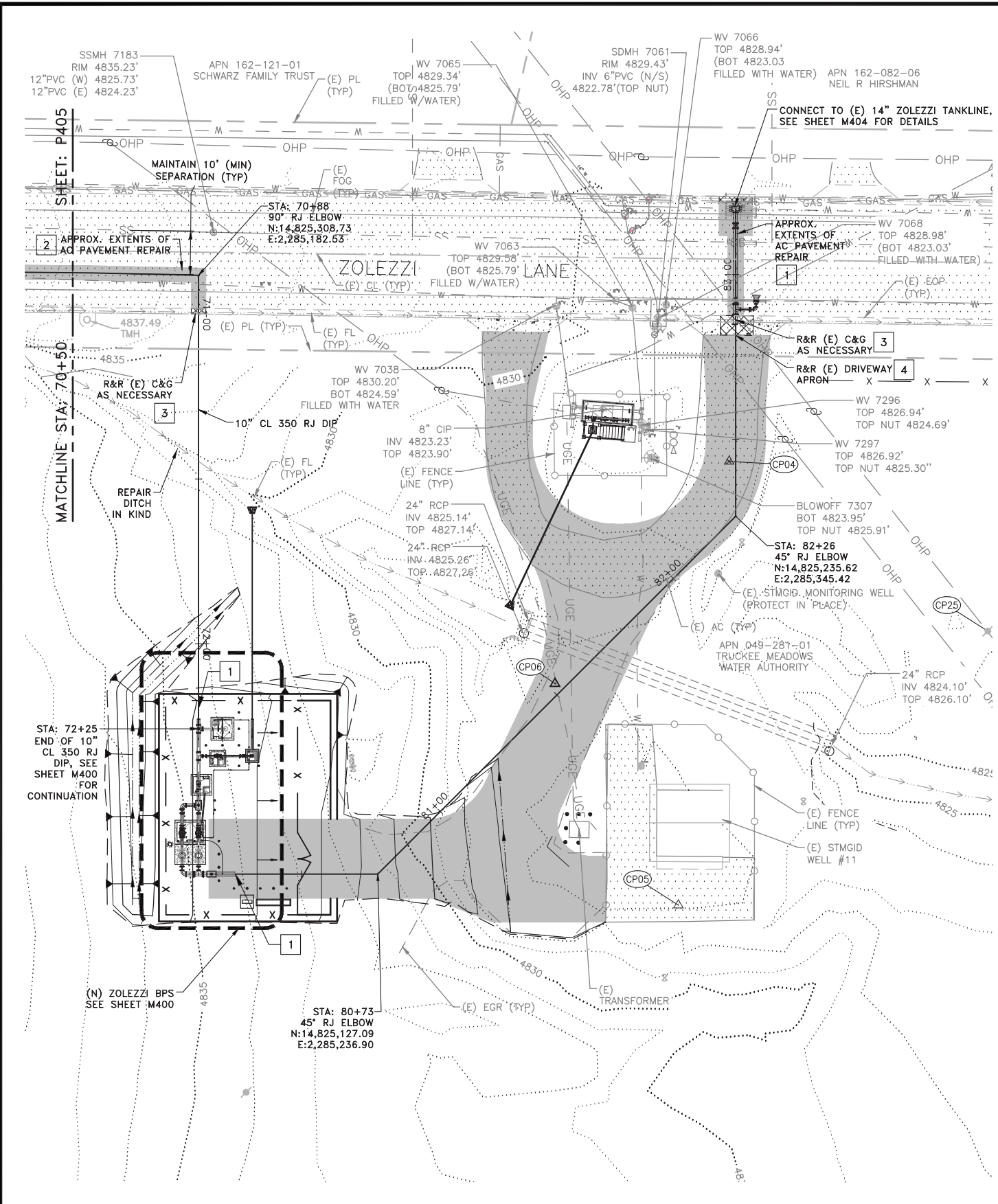
1. PROVIDE TEST STATIONS PER DETAIL: 10L-9/TYP.
2. SEE DETAIL: W2.2/TYP FOR AC PAVEMENT REPAIR.
3. SEE DETAIL: W16.1/TYP FOR CURB & GUTTER REPLACEMENT.
4. SEE DETAIL: W5.11/TYP FOR DRIVEWAY APRON REPLACEMENT.
5. CONTRACTOR SHALL REPAIR ALL STRIPING AS NECESSARY



A 10" DISCHARGE PROFILE
P406 SCALE: AS SHOWN



B 14" SUCTION PROFILE
P406 SCALE: AS SHOWN



REVISION	DESCRIPTION	BY	APP	DATE
▲	ADDENDUM #2	DAD	DAD	8/26/15

WORK ORDER NO.	10-0002
DESIGNED	JPB/DAD
DRAWN	AAA
DATE	AUGUST 2015
CHECKED	RCK
SUBMITTED	
RECOMMENDED	
APPROVED	

TRUCKEE MEADOWS WATER AUTHORITY
 1355 CAPITAL BLVD. / PO BOX 30013
 RENO, NEVADA 89520-3013
 PH 775-834-8080 / FX 775-834-8003

NOT REPRODUCIBLE
 PROPERTY OF TRUCKEE MEADOWS WATER AUTHORITY, RETURN UPON COMPLETION OF PROJECT
 (Per Homeland Security Act)

TMWA ARROWCREEK DROUGHT RESPONSE DESIGN PROJECT
10" WATER P&P STA: 70+50
14" WATER P&P STA: 80+00 TO 83+10

PROFESSIONAL ENGINEER - STATE OF NEVADA
 DAVID A. DIEGLE
 Exp. 12/31/16
 CIVIL
 No. 21576
 8/05/15

SHEET NUMBER
P406
 36 OF 90

V:\2015\Arrowcreek\20150803\TMWA\Drawings\Civil\0017_P&P\406.dwg By: jpb, rck, alr