

1355 Capital Blvd. • P.O. Box 30013 • Reno, NV 89520-3013
P 775.834.8080 • F 775.834.8003

Addendum No. 1

Water Main Replacement Project for F St. & 16th St., Sparks, NV

PWP Bid No. WA-2016-181

June 6, 2016

The following information, clarifications, changes and modifications are by reference incorporated into the bid documents for the above referenced project. Any work item or contract provision not changed or modified will remain in full force and effect. The bid date and time and construction schedule remain the same.

REVISIONS TO BID DOCUMENTS AND DRAWINGS, AND CLARIFICATION

THE FOLLOWING REVISIONS SHALL APPLY AND BE INCORPORATED INTO THE BID DOCUMENTS

BID DOCUMENTS

1. Technical Specifications Volume 1, Page 15010-4, Section 2.7 Gate Valves; Addition of acceptable gate valve manufacture and model numbers. The last sentence of section 2.7 shall be modified to read: "Resilient Wedge Gate Valves 24 inch or greater shall be Mueller Series 2361; US Pipe A-USP1; American Series 2500; or AVK Series 45, or approved equal, meeting AWWA C509 and/or AWWA C515."

DRAWINGS

1. Drawing sheet D2 - Details; Detail 6/D2; Deletion of redundant text as indicated by revision cloud and labeled as "delta 1" in the revision table. Replace sheet D2 with the attached revised D2 sheet in its entirety.

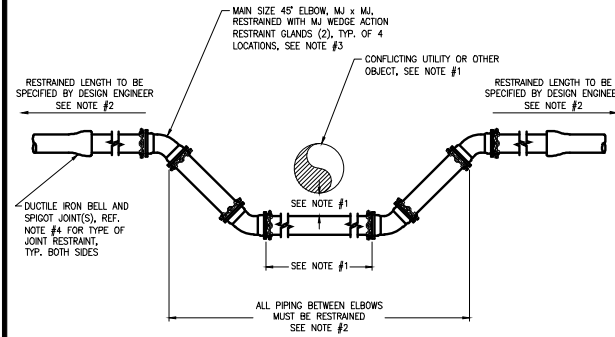
PRE-BID MEETING QUESTIONS/CLARIFICATIONS

1. The City of Sparks will perform a separate roadway rehabilitation project for F St. & 16th Street scheduled to directly follow this project.
2. Unless specifically indicated on the plans, compacted type 2 aggregate base course may be installed in lieu of temporary asphalt patching as the roadway will be reconstructed in separate City of Sparks road rehabilitation project directly following this water main project. Saw cutting of the existing asphalt on all sides of trenches will be required, and the final trench surface shall be flush with the adjacent asphalt. Contractor shall be responsible for keeping trench and streets in a neat and orderly condition during construction operations, maintain dust control measures, and provide reasonable access for existing residences. Streets shall be swept and maintained as needed or as directed by TMWA or City of Sparks and

storm water management BMPs shall be in place at all times and be maintained until COS begins street work. Areas requiring permanent patching are indicated on the improvement plans.

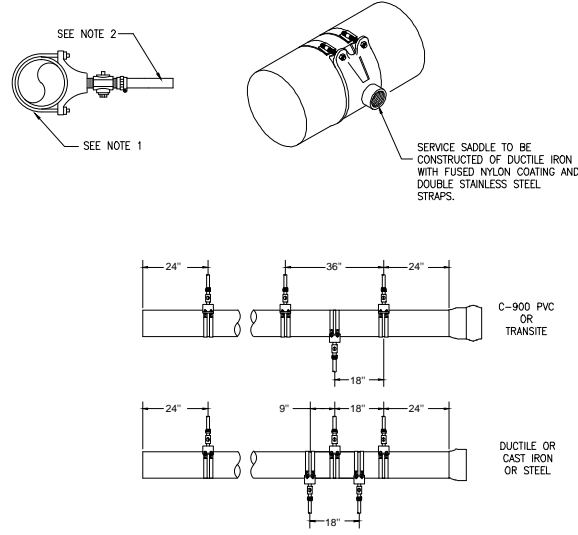
3. No special permit will be required by the City of Sparks for the project.
4. The contractor shall prepare and submit detail traffic control plans in pdf format for review by the City of Sparks and Project Engineer at or before the pre-construction meeting. No work shall be performed prior to approval of the traffic control plan.
5. 36" valves and connecting fittings shall be coated with Denso Petroleum Tape System in accordance with plans and details.

- NOTES:
1. REFERENCE TMAA ENGINEERING & CONSTRUCTION STANDARDS SECTIONS 7, 8, AND/OR 8A FOR UTILITY SEPARATION REQUIREMENTS.
 2. ALL RESTRAINED JOINT PIPING SHALL BE DUCTILE IRON PIPE (DU-9P). RESTRAINED LENGTHS OUTSIDE OUTERMOST ELBOWS SHALL BE CALCULATED BY THE DESIGN ENGINEER AND SPECIFIED ON THE WATER IMPROVEMENT PLANS.
 3. RESTRAINED JOINT FITTINGS SHALL BE MECHANICAL JOINT (MJ) DUCTILE IRON RESTRAINED WITH MECHANICAL JOINT WEDGE ACTION RESTRAINT GLANDS.
 4. BELL AND SPIGOT PUSH-ON JOINTS SHALL BE RESTRAINED USING RUBBER GASKETS WITH STAINLESS STEEL LOCKING SEGMENTS VULCANIZED INTO THE RUBBER GASKET.
 5. ALL BOLTS AND EXPOSED METAL SHALL BE COATED WITH BRUSHED-ON MASTIC.
 6. FITTINGS, DUCTILE IRON PIPE, AND OTHER METAL PARTS SHALL BE ENCASED WITH POLYETHYLENE WRAP PER AWWA C105.



TRUCKEE MEADOWS WATER	DATE	APPENDIX 10I	DRAWING NUMBER
	7/2001	VERTICAL ELBOW INSTALLATION	10I-2
	REV	RESTRAINED JOINT VERTICAL OFFSET UNDER UTILITY OBJECT FOR MAINS 6" TO 12"	
	7/2011		

- NOTES:
1. SERVICE CLAMP SIZE IS DEPENDENT UPON THE SIZE AND TYPE OF MAIN.
 2. 1" SDR-9 CTS HDPE TUBING, LENGTH TO BE DETERMINED BY ENGINEER.

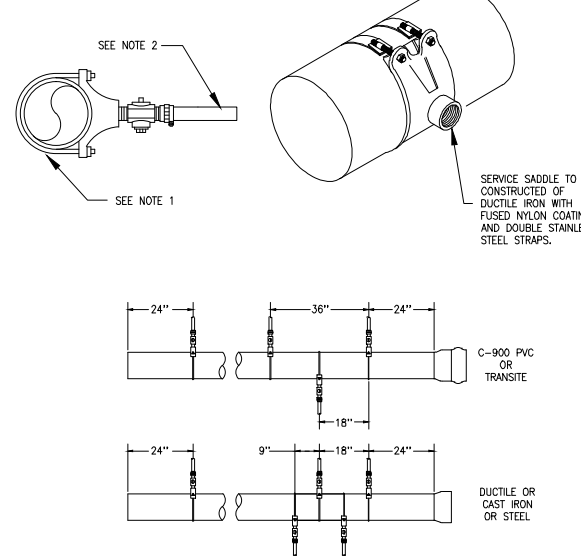


MATERIAL LIST

QTY.	DESCRIPTION
1.0	STOP CORP 1" IP THREAD INLET, COMPRESSION OUTLET
1.0	LINER RIGID STAINLESS STEEL FOR 1" SDR-9 CTS HDPE TUBING

TRUCKEE MEADOWS WATER	DATE	APPENDIX 10H	DRAWING NUMBER
	7/2001	SERVICE TAP INSTALLATIONS	10H-2
	REV	1" SERVICE TAP	
	7/2011		

- NOTES:
1. SERVICE CLAMP SIZE IS DEPENDENT UPON THE SIZE AND TYPE OF MAIN.
 2. 1-1/4" SDR-9 CTS HDPE TUBING, LENGTH TO BE DETERMINED BY ENGINEER.

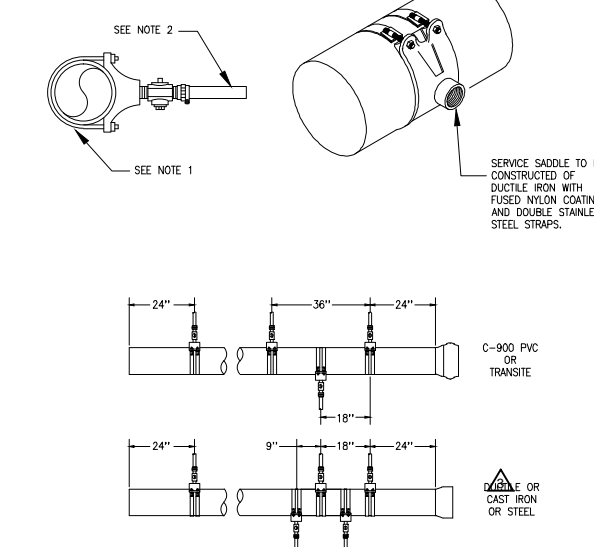


MATERIAL LIST

QTY.	DESCRIPTION
1.0	STOP CORP 1-1/4" IP THREAD INLET, COMPRESSION OUTLET
1.0	LINER RIGID STAINLESS STEEL FOR 1-1/4" SDR-9 CTS HDPE TUBING

TRUCKEE MEADOWS WATER	DATE	APPENDIX 10H	DRAWING NUMBER
	7/2001	SERVICE TAP INSTALLATION	10H-3
	REV	1-1/4" SERVICE TAP	
	7/2011		

- NOTES:
1. SERVICE CLAMP SIZE IS DEPENDENT UPON THE SIZE AND TYPE OF MAIN.
 2. 1-1/2" SDR-9 CTS HDPE TUBING, LENGTH TO BE DETERMINED BY ENGINEER.

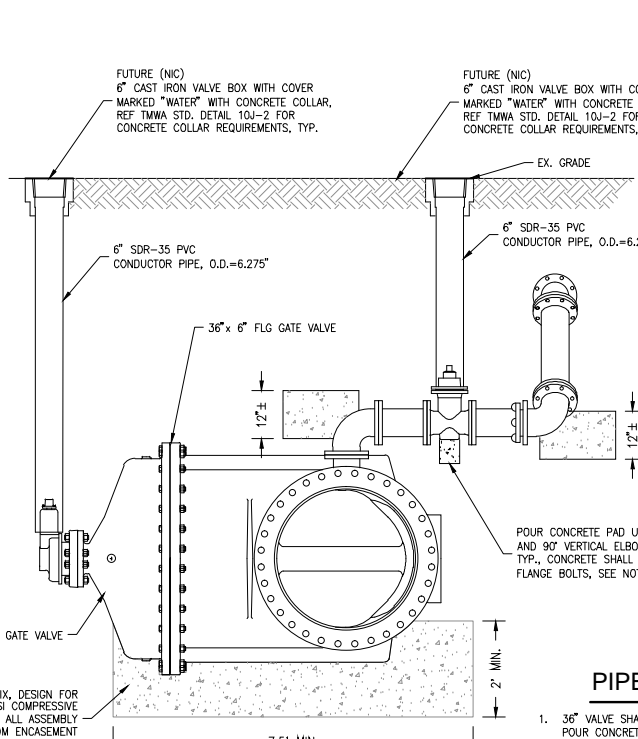
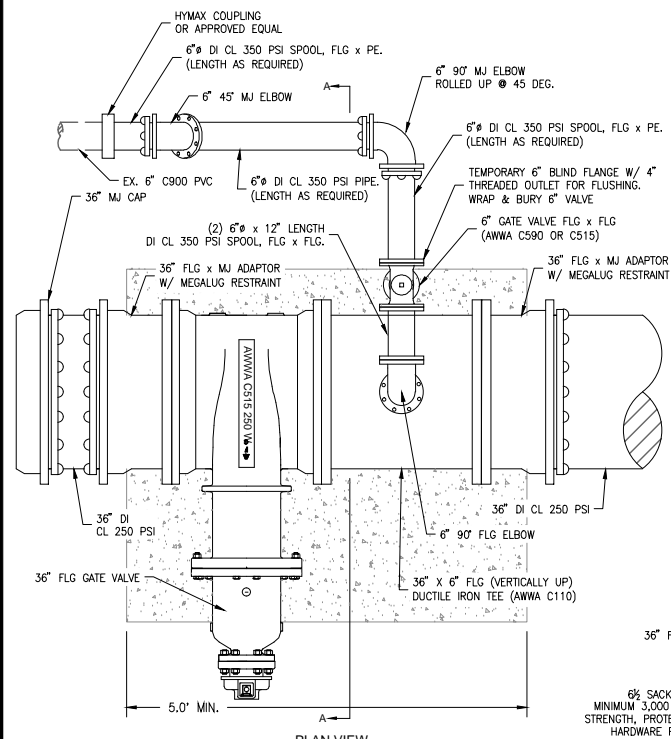


MATERIAL LIST

QTY.	DESCRIPTION
1.0	STOP CORP 1-1/2" IP THREAD INLET, COMPRESSION OUTLET
1.0	LINER RIGID STAINLESS STEEL FOR 1-1/2" SDR-9 CTS HDPE TUBING

TRUCKEE MEADOWS WATER	DATE	APPENDIX 10H	DRAWING NUMBER
	7/2001	SERVICE TAP INSTALLATION	10H-4
	REV	1-1/2" SERVICE TAP	
	7/2011		

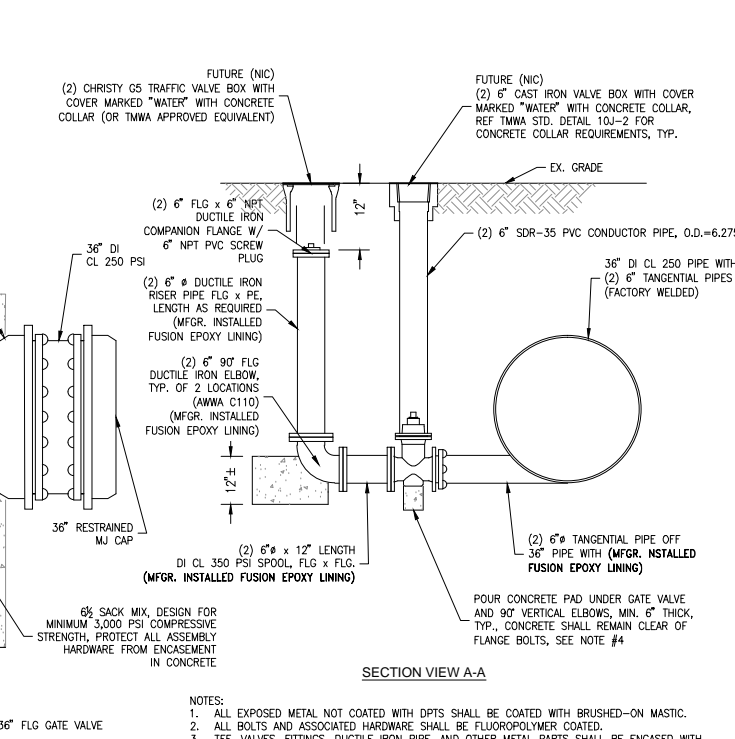
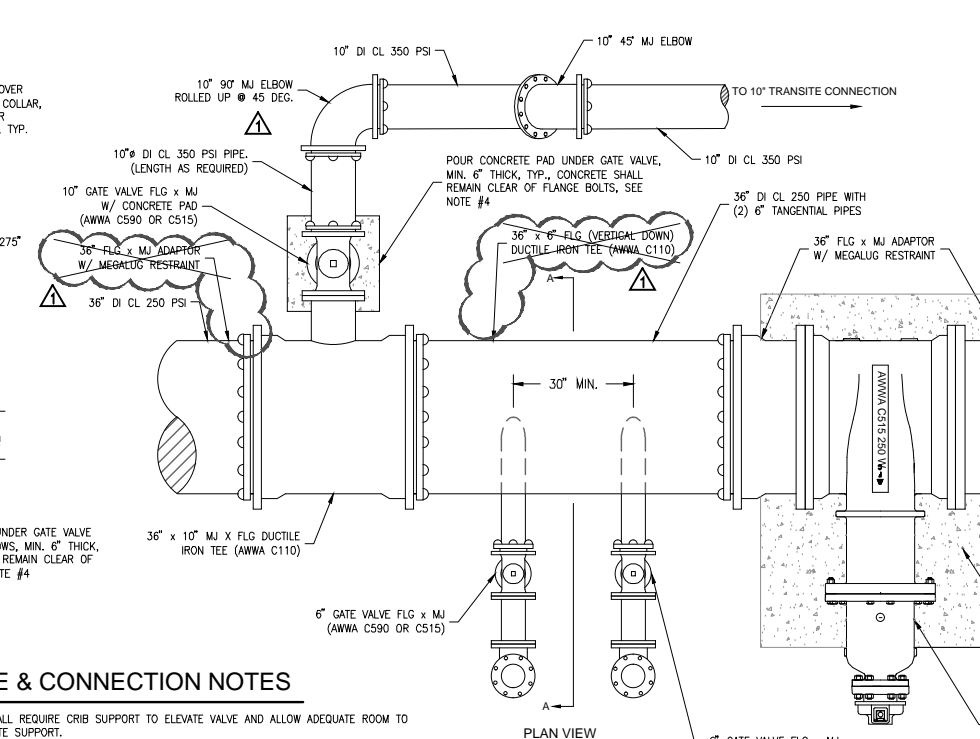
- NOTES
1. ALL SERVICE SADDLES ON 36" DUCTILE IRON PIPE SHALL BE SMITH BLAIR 366 W/ STAINLESS STRAPS, O.A.E.



- NOTES:
1. ALL EXPOSED METAL NOT COATED WITH DPTS SHALL BE COATED WITH BRUSHED-ON MASTIC.
 2. ALL BOLTS AND ASSOCIATED HARDWARE SHALL BE FLUOROPOLYMER COATED.
 3. TEE, VALVES, FITTINGS, DUCTILE IRON PIPE, AND OTHER METAL PARTS SHALL BE ENCASED WITH POLYETHYLENE WRAP PER AWWA C105.
 4. CONCRETE FOR PADS SHALL HAVE A COMPRESSIVE STRENGTH OF NOT LESS THAN 3,000 PSI AFTER 28 DAYS. BAG CONCRETE MIX IS NOT ACCEPTABLE.
 5. ALL PIPE AND FITTINGS IN CONTACT WITH WATER SHALL BE NSF-61 CERTIFIED.
 6. MJ x FLG GATE VALVES WITH MJ WEDGE ACTION RESTRAINT GLANDS MAY BE REQUIRED IN LIEU OF PD x FLG GATE VALVES, REFERENCE WATER IMPROVEMENT PLANS.

5
D2
36" MAIN CONNECTION
N.T.S. - F St. & Rock Blvd.

- PIPE & CONNECTION NOTES
1. 36" VALVE SHALL REQUIRE CRIB SUPPORT TO ELEVATE VALVE AND ALLOW ADEQUATE ROOM TO POUR CONCRETE SUPPORT.
 2. 36" MAIN - ALL MJ, FL, WELDED CONNECTIONS AND HARDWARE SHALL BE WRAPPED WITH DENSO PETROLEUM TAPE SYSTEM (DPTS), OR APPROVED EQUAL.
 3. 6" CONNECTION @ ROCK BLVD. - 6" FL & MJ CONNECTIONS, BOLTS AND APPURTENANCES SHALL HAVE DPTS UP TO AND INCLUDING 6" VALVE.
 4. BLOW OFF ASSEMBLY @ 15th - 6" FL & MJ CONNECTIONS SHALL HAVE DPTS UP TO AND INCLUDING 90° ELBOW DOWNSTREAM OF VALVE.
 5. 10" CONNECTION @ 15th - 10" FL & MJ CONNECTIONS SHALL HAVE DPTS UP TO AND INCLUDING THE FIRST 90° ELBOW.



6
D2
36" MAIN - MAIN CONNECTION & DUAL BLOW OFF ASSEMBLY
N.T.S. - F St. & 15th St.

- NOTES:
1. ALL EXPOSED METAL NOT COATED WITH DPTS SHALL BE COATED WITH BRUSHED-ON MASTIC.
 2. ALL BOLTS AND ASSOCIATED HARDWARE SHALL BE FLUOROPOLYMER COATED.
 3. TEE, VALVES, FITTINGS, DUCTILE IRON PIPE, AND OTHER METAL PARTS SHALL BE ENCASED WITH POLYETHYLENE WRAP PER AWWA C105.
 4. CONCRETE FOR PADS SHALL HAVE A COMPRESSIVE STRENGTH OF NOT LESS THAN 3,000 PSI AFTER 28 DAYS. BAG CONCRETE MIX IS NOT ACCEPTABLE.
 5. ALL PIPE AND FITTINGS IN CONTACT WITH WATER SHALL BE NSF-61 CERTIFIED.
 6. MJ x FLG GATE VALVES WITH MJ WEDGE ACTION RESTRAINT GLANDS MAY BE REQUIRED IN LIEU OF PD x FLG GATE VALVES, REFERENCE WATER IMPROVEMENT PLANS.

REVISION	DESCRIPTION	BY	APP	DATE
1	REVISED DETAIL 6 - ADDENDA 1	RA		6/2/16

WORK ORDER NO.	10-0001.040
DESIGNED	RA/AE
DRAWN	AE
DATE	05-16-2016
CHECKED	RA
SUBMITTED	DATE
RECOMMENDED	NAME
APPROVED	NAME

TRUCKEE MEADOWS WATER AUTHORITY
1355 CAPITAL BLVD. / PO BOX 30013
RENO, NEVADA 89520-3013
PH 775-834-8000 / FX 775-834-8003

NOT REPRODUCIBLE
PROPERTY OF TRUCKEE MEADOWS WATER AUTHORITY; RETURN UPON COMPLETION OF PROJECT
(Per Homeland Security Act)

WATER MAIN REPLACEMENT PROJECT
F ST. & 16TH ST., SPARKS NV
DETAILS

BID SET
SHEET NUMBER
D2
8 OF 10
06-02-2016

X:\Projects\15101.00\Drawn\ENGR\SHEETS\TMAA-D-DETAILS.dwg
Jun 03, 2016 - 10:11am