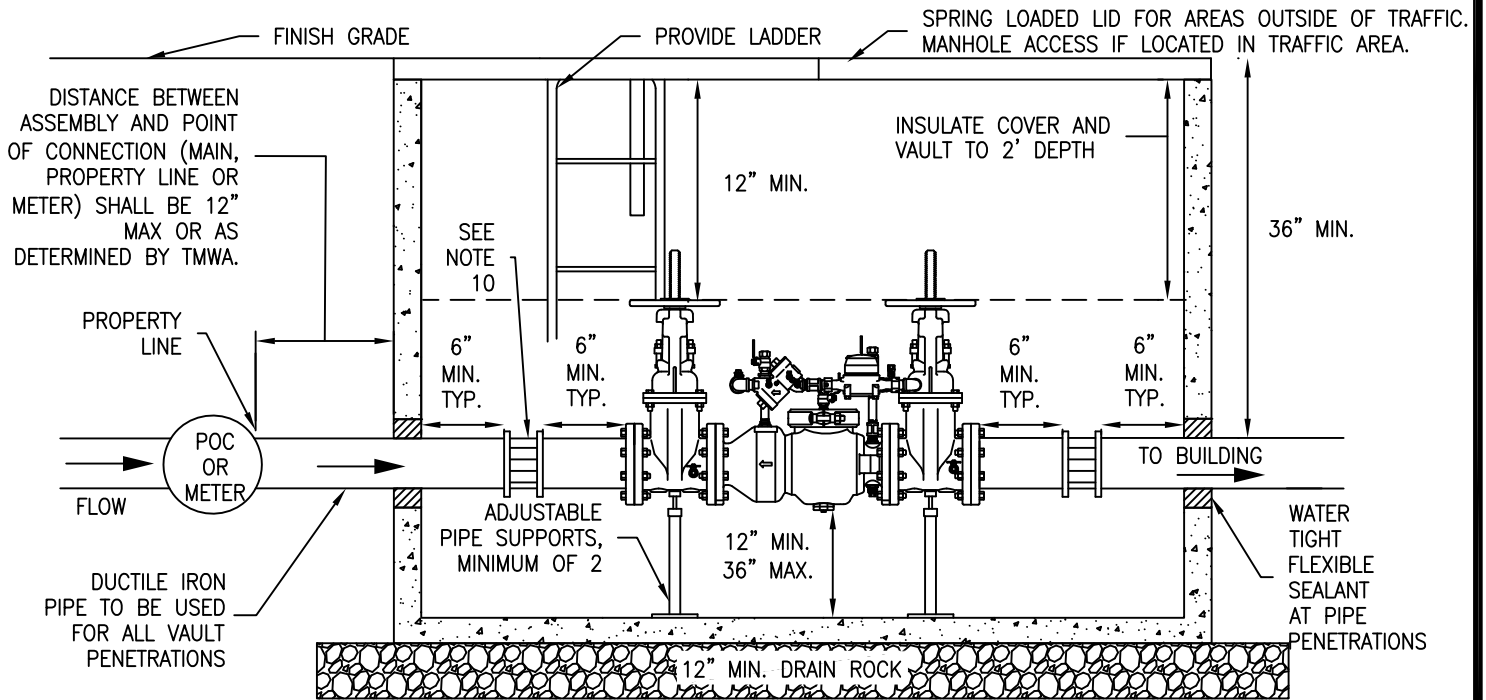
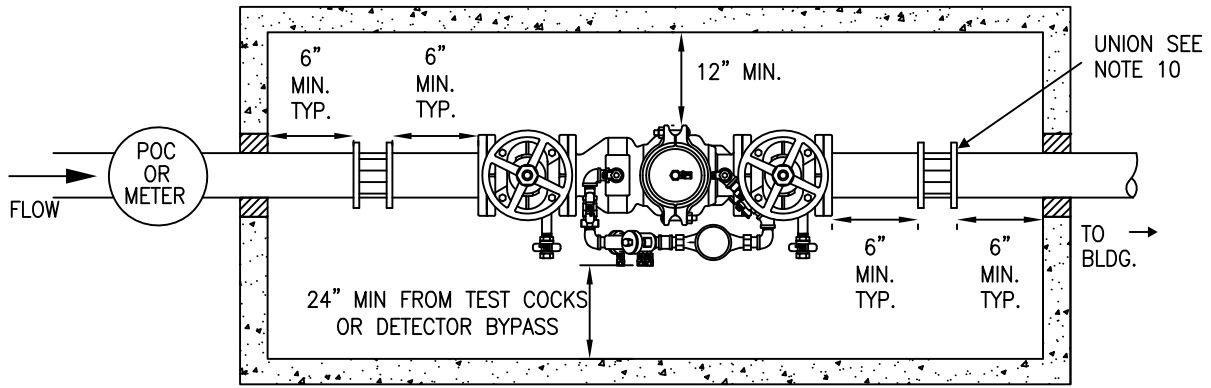


PLAN VIEW



NOTES:

1. ASSEMBLY SHALL BE A USC APPROVED LEAD FREE DEVICE.
2. FREEZE PROOF INSULATED VAULT REQUIRED.
3. BELOW GROUND VAULT SHALL BE SIZED TO PROVIDE CLEARANCES AS SHOWN ABOVE.
4. BELOW GROUND VAULT SHALL REMAIN DRY THROUGHOUT THE YEAR, CONTRACTOR SHALL ENSURE THERE IS PROPER DRAINAGE AROUND THE VAULT
5. SPRING LOADED LID REQUIRED ON LARGE VAULTS WITH ASSEMBLIES LARGER THAN 2 INCHES. MANHOLE ACCESS IS REQUIRED IN AREAS SUBJECT TO VEHICULAR TRAFFIC.
6. NO STOP AND WASTE VALVES.
7. CALL LOCAL BUILDING AND/OR FIRE DEPARTMENTS FOR DEPTH AND TYPE OF PIPE TO BE USED.
8. INSPECTION BY TMWA BACKFLOW PREVENTION GROUP PERSONNEL REQUIRED BEFORE METER IS SET OR SERVICE IS ACTIVATED.
9. TESTING OF THE ASSEMBLY REQUIRED WITHIN 7 DAYS AFTER METER IS SET OR SERVICE ACTIVATION. COPY OF TEST RESULTS TO BE FORWARDED TO TMWA BACKFLOW PREVENTION GROUP PERSONNEL BY A CERTIFIED ASSEMBLY TESTER WITHIN THAT SAME TIMEFRAME.
10. UNIONS TO BE INSTALLED WITH ALL ASSEMBLIES ON BOTH SIDES OF ASSEMBLY.
11. VALVES ON DETECTOR BYPASS SHALL REMAIN OPEN AT ALL TIMES.



DATE

7/2001

REV

9/2016

APPENDIX 10A
 BACKFLOW PREVENTION ASSEMBLIES
 FIRE - CLASS 1, 2 & 3 DOUBLE CHECK VALVE
 DETECTOR ASSEMBLY
 EXTERNAL - HORIZONTAL BELOW GRADE

DRAWING NUMBER

10A-5