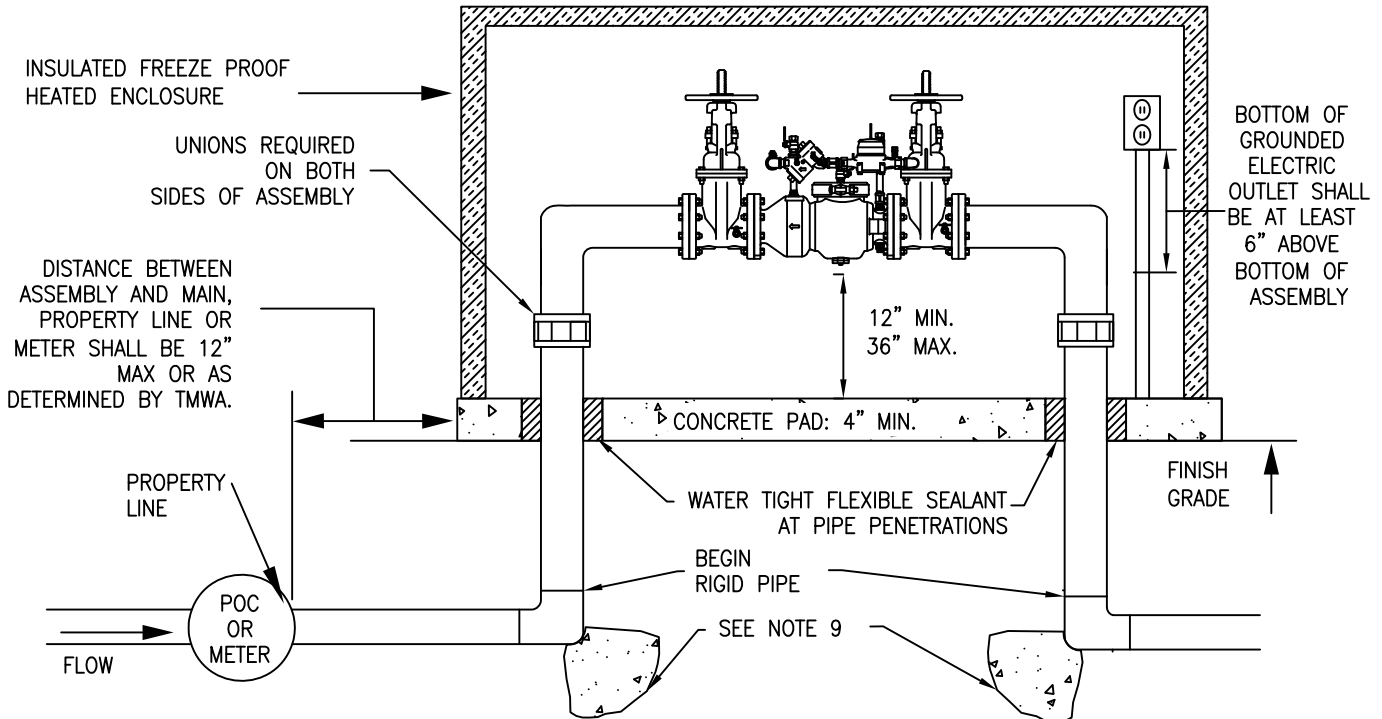
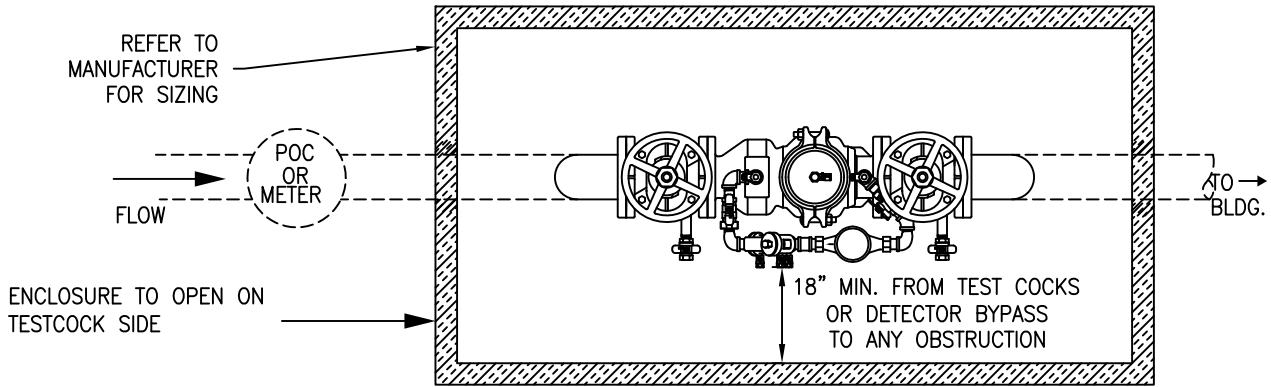


PLAN VIEW



NOTES:

1. ASSEMBLY SHALL BE A USC APPROVED LEAD FREE DEVICE.
2. GROUNDED ELECTRIC SUPPLY SHALL BE A MINIMUM OF 6" ABOVE BOTTOM OF RELIEF VALVE AND STUBBED TO THE OUTSIDE.
3. FREEZE PROOF INSULATED BOX AND 1 SOURCE OF HEAT ARE REQUIRED. 2 SOURCES OF HEAT ARE STRONGLY RECOMMENDED.
4. INSULATED BOX SHALL SWING CLEAR OF ASSEMBLY TO PROVIDE CLEARANCES SHOWN IN PLAN VIEW OR INSULATED BOX SHALL BE SIZED TO PROVIDE CLEARANCES
5. NO STOP AND WASTE VALVES.
6. CALL LOCAL BUILDING AND/OR FIRE DEPARTMENT FOR DEPTH AND TYPE OF PIPE TO BE USED.
7. INSPECTION BY TMWA BACKFLOW PREVENTION GROUP PERSONNEL REQUIRED BEFORE METER IS SET OR SERVICE IS ACTIVATED.
8. TESTING OF BACKFLOW ASSEMBLY REQUIRED WITHIN 7 DAYS AFTER METER IS SET OR SERVICE ACTIVATION. COPY OF TEST RESULTS TO BE FORWARDED TO TMWA BACKFLOW PREVENTION GROUP PERSONNEL BY A CERTIFIED ASSEMBLY TESTER WITHIN THAT SAME TIMEFRAME.
9. MINIMUM DIMENSIONS FOR THE THRUST BLOCK BEARING AREA FOR PIPE 2" AND SMALLER SHALL BE 8" X 8" AND 12" IN DEPTH. ALL OTHER SIZES TO BE DETERMINED BY ENGINEER.
10. UNIONS TO BE INSTALLED WITH ALL ASSEMBLIES ON BOTH SIDES OF ASSEMBLY.
11. VALVES ON DETECTOR BYPASS SHALL REMAIN OPEN AT ALL TIMES.



DATE

7/2001

REV

9/2016

APPENDIX 10A  
 BACKFLOW PREVENTION ASSEMBLIES  
 FIRE CLASS 1, 2 & 3 DOUBLE CHECK VALVE  
 DETECTOR ASSEMBLY  
 EXTERNAL - HORIZONTAL ABOVE GRADE

DRAWING NUMBER

10A-6