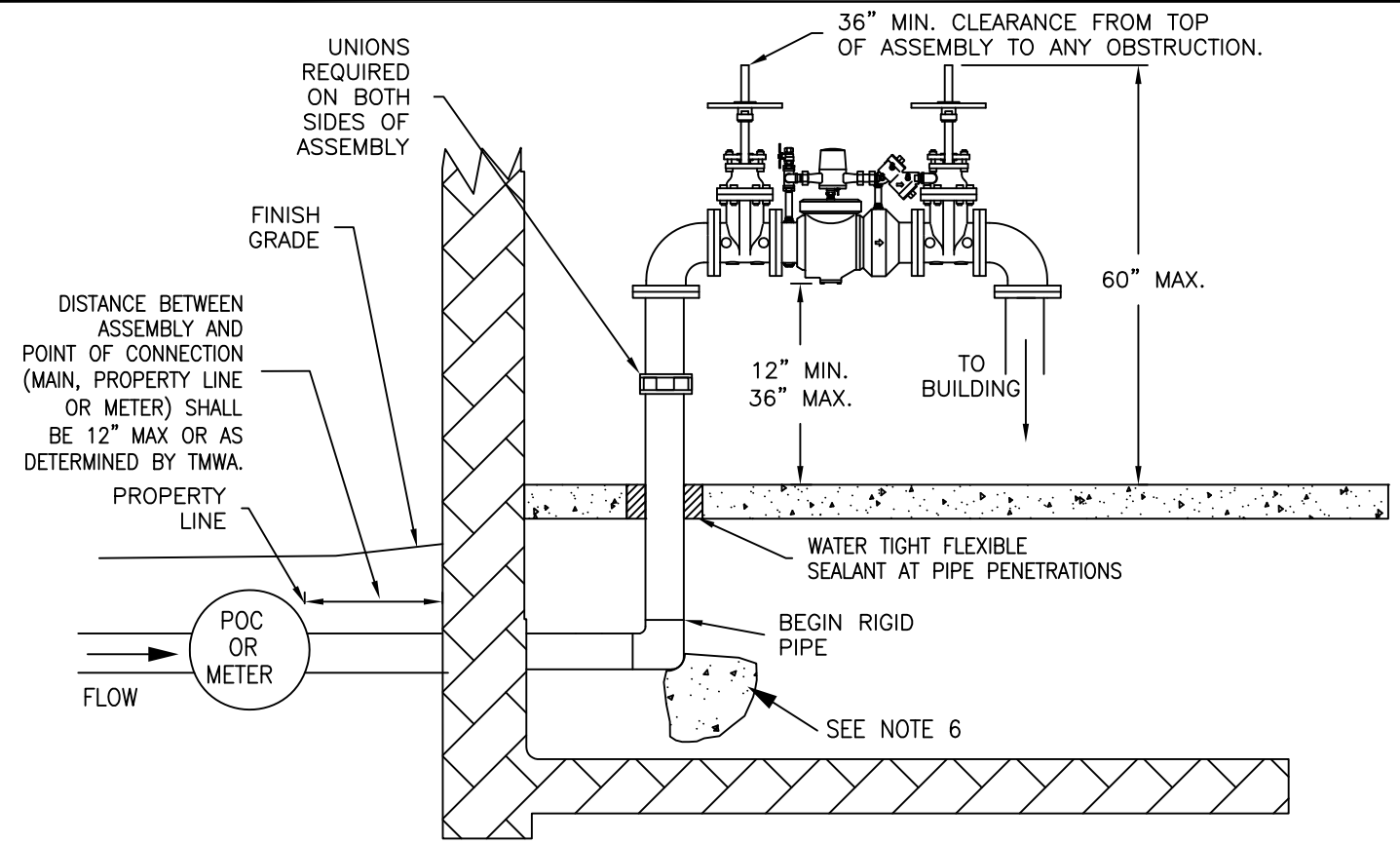
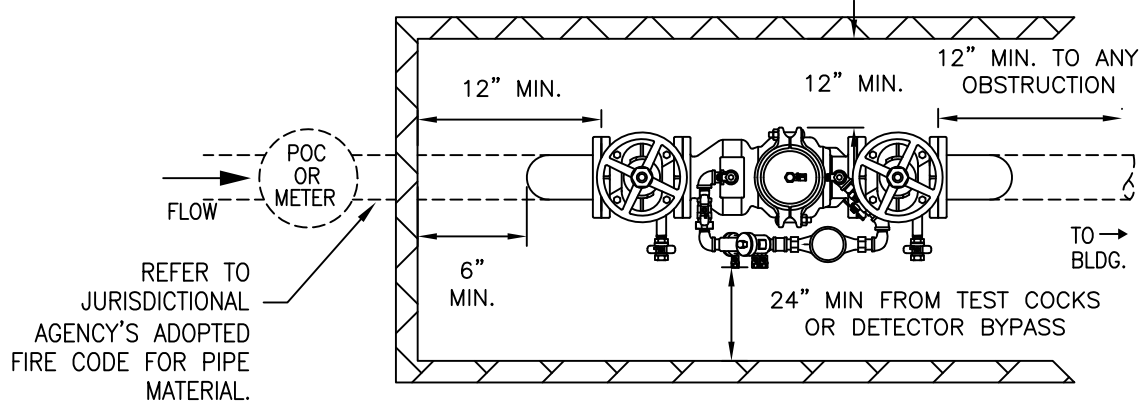


PLAN VIEW



NOTES:

1. ASSEMBLY SHALL BE A USC APPROVED DEVICE.
2. NO STOP AND WASTE VALVES.
3. CALL LOCAL BUILDING AND/OR FIRE DEPARTEMENTS FOR DEPTH AND TYPE OF PIPE TO BE USED.
4. INSPECTION BY TMWA BACKFLOW PREVENTION GROUP PERSONNEL REQUIRED BEFORE METER IS SET OR SERVICE IS ACTIVATED.
5. TESTING OF BACKFLOW ASSEMBLY REQUIRED WITHIN 7 DAYS AFTER METER IS SET OR SERVICE ACTIVATION. COPY OF TEST RESULTS TO BE FORWARDED TO TMWA BACKFLOW PREVENTION GROUP PERSONNEL BY A CERTIFIED ASSEMBLY TESTER WITHIN THAT SAME TIMEFRAME.
6. MINIMUM DIMENSIONS FOR THE THRUST BLOCK BEARING AREA FOR PIPE 2" AND SMALLER SHALL BE 8" X 8" AND 12" IN DEPTH. ALL OTHER SIZES TO BE DETERMINED BY ENGINEER.
7. VALVES ON DETECTOR BYPASS SHALL REMAIN OPEN AT ALL TIMES.
8. TMWA'S BACKFLOW DEPARTMENT MUST APPROVE THE USE OF INTERNAL BACKFLOW ASSEMBLIES.



DATE	7/2001
REV	7/2011

APPENDIX 10A
 BACKFLOW PREVENTION ASSEMBLIES
 FIRE - CLASS 1, 2 & 3 DOUBLE CHECK VALVE
 DETECTOR ASSEMBLIES INTERNAL - HORIZONTAL
 INSTALLATION

DRAWING NUMBER	10A-8
----------------	-------