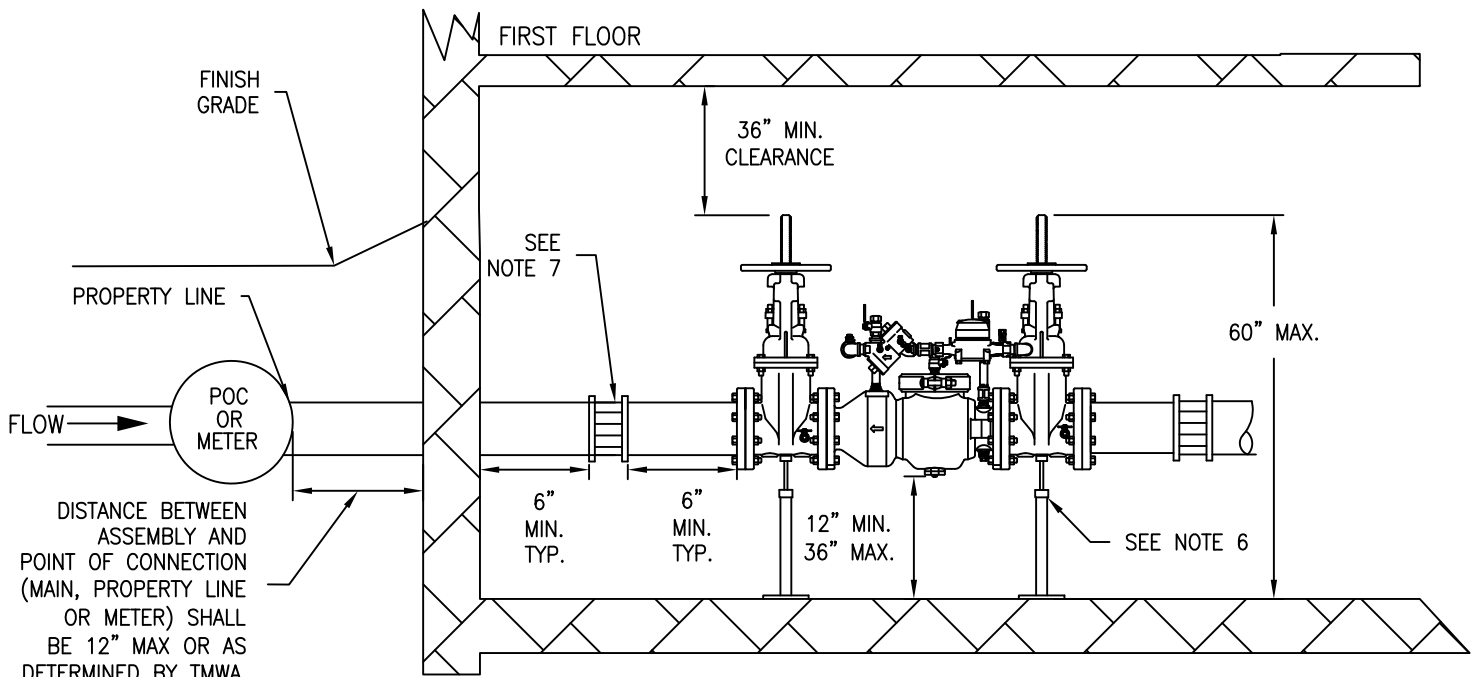
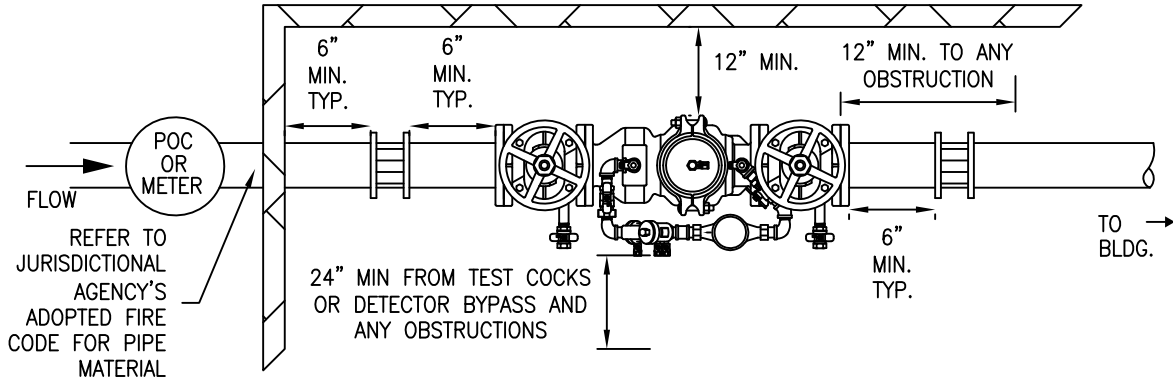


PLAN VIEW



NOTES:

1. ASSEMBLY SHALL BE A USC APPROVED DEVICE.
2. NO STOP AND WASTE VALVES.
3. CALL LOCAL BUILDING AND/OR FIRE DEPARTMENTS FOR DEPTH AND TYPE OF PIPE TO BE USED.
4. INSPECTION BY TMWA BACKFLOW PREVENTION GROUP PERSONNEL REQUIRED BEFORE METER IS SET OR SERVICE IS ACTIVATED.
5. TESTING OF BACKFLOW ASSEMBLY REQUIRED WITHIN 7 DAYS AFTER METER IS SET OR SERVICE ACTIVATION. COPY OF TEST RESULTS TO BE FORWARDED TO TMWA BACKFLOW PREVENTION GROUP PERSONNEL BY A CERTIFIED ASSEMBLY TESTER WITHIN THAT SAME TIMEFRAME.
6. A MINIMUM OF 2 ADJUSTABLE PIPE STANDS TO BE USED.
7. UNIONS TO BE INSTALLED WITH ALL ASSEMBLIES ON BOTH SIDES OF ASSEMBLY.
8. VALVES ON DETECTOR BYPASS SHALL REMAIN OPEN AT ALL TIMES.
9. TMWA'S BACKFLOW DEPARTMENT MUST APPROVE THE USE OF INTERNAL BACKFLOW ASSEMBLIES.



DATE

7/2001

REV

7/2011

APPENDIX 10A
 BACKFLOW PREVENTION ASSEMBLIES
 FIRE - CLASS 1, 2 & 3 DOUBLE CHECK VALVE
 DETECTOR ASSEMBLY INTERNAL BASEMENT
 INSTALLATION

DRAWING NUMBER

10A-9