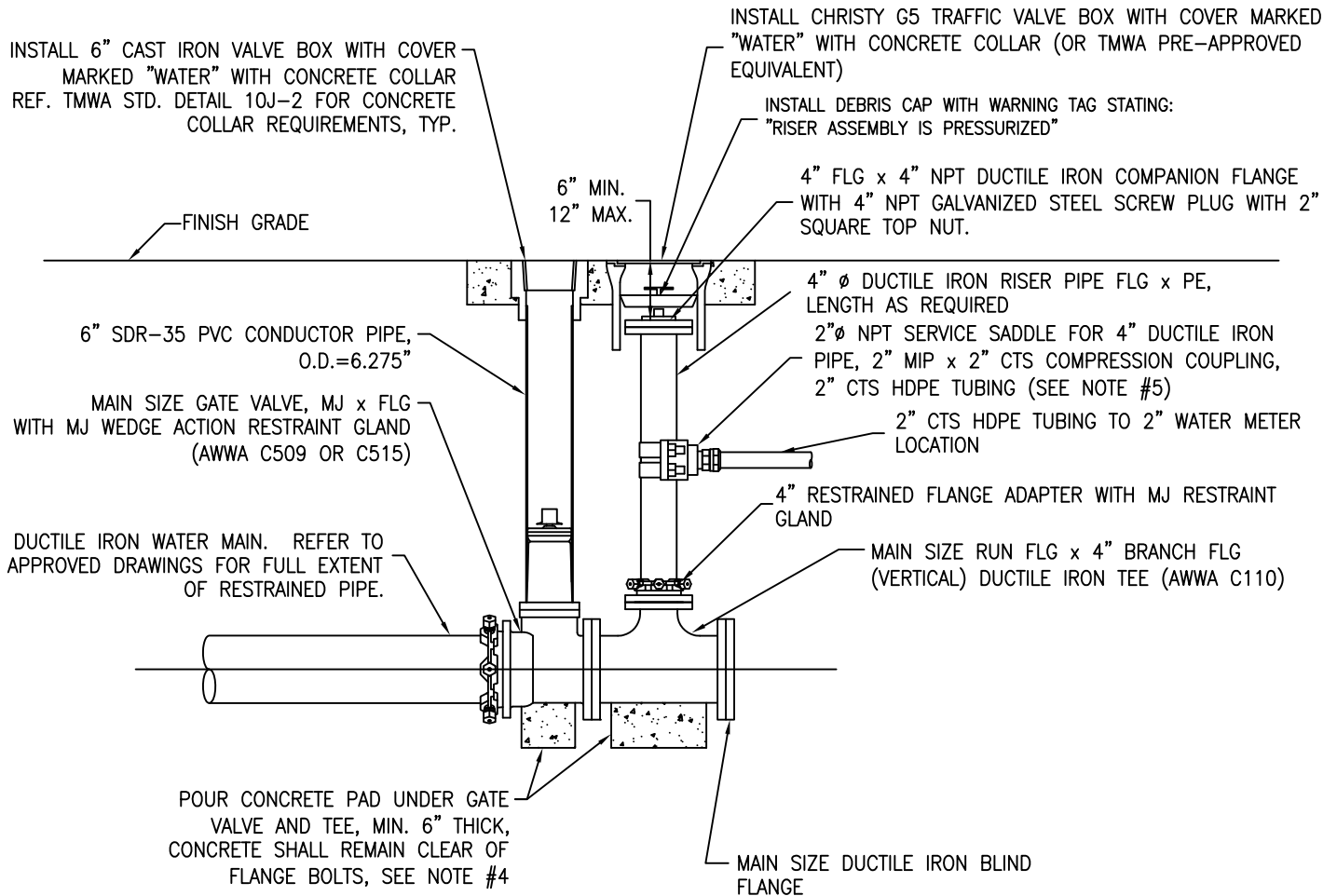


NOTES:

1. REFERENCE TMWA STANDARD DETAIL 10L-2 FOR THRUST BLOCK SIZING AND REQUIREMENTS (DEAD END CONDITION) FOR PERMANENT FLUSH VALVE ASSEMBLIES.
2. ALL EXPOSED METAL SHALL BE COATED WITH BRUSHED-ON MASTIC.
3. ALL BOLTS AND ASSOCIATED HARDWARE SHALL BE FLUOROPOLYMER COATED.
4. TEE, VALVE, FITTINGS, DUCTILE IRON PIPE, AND OTHER METAL PARTS SHALL BE ENCASED WITH POLYETHYLENE WRAP PER AWWA C105.
5. CONCRETE FOR PADS SHALL HAVE A COMPRESSIVE STRENGTH OF NOT LESS THAN 3,000 PSI AFTER 28 DAYS. BAG CONCRETE MIX IS NOT ACCEPTABLE.
6. RETIREMENT REQUIRES REMOVAL OF 4" DUCTILE IRON RISER WITH TAP AND ALL ASSOCIATED 2" CTS HDPE TUBING AND METER BOX. REPLACE WITH NEW 4" DUCTILE IRON FLG x PE SPOOL.
7. ALL PIPE AND FITTINGS IN CONTACT WITH WATER SHALL BE NSF-61 CERTIFIED.



FOR EXISTING FLUSH VALVE ASSEMBLIES:

- ENSURE THAT PLUG IS PRESSURE RATED. PVC SCREW PLUGS SHALL BE REPLACED TO CONFORM TO THIS DETAIL.
- NOT ALL EXISTING FLUSH VALVE ASSEMBLIES WILL BE CONNECTED TO MECHANICALLY RESTRAINED PIPE; THRUST BLOCKS AT THE END OF THE MAIN SHALL NOT BE DISTURBED.
- RISER SHALL BE REPLACED TO THE ABOVE SPECIFICATIONS.



DATE

7/2011

REV

9/2016

APPENDIX 10E
FLUSH ASSEMBLY INSTALLATIONS

NEW FLUSH ASSEMBLY FOR
2" CONSTRUCTION WATER SERVICE
FOR MAIN SIZES 6" TO 12"

DRAWING NUMBER

10E-6