

APPENDIX 10F
FIRE PROTECTION INSTALLATIONS

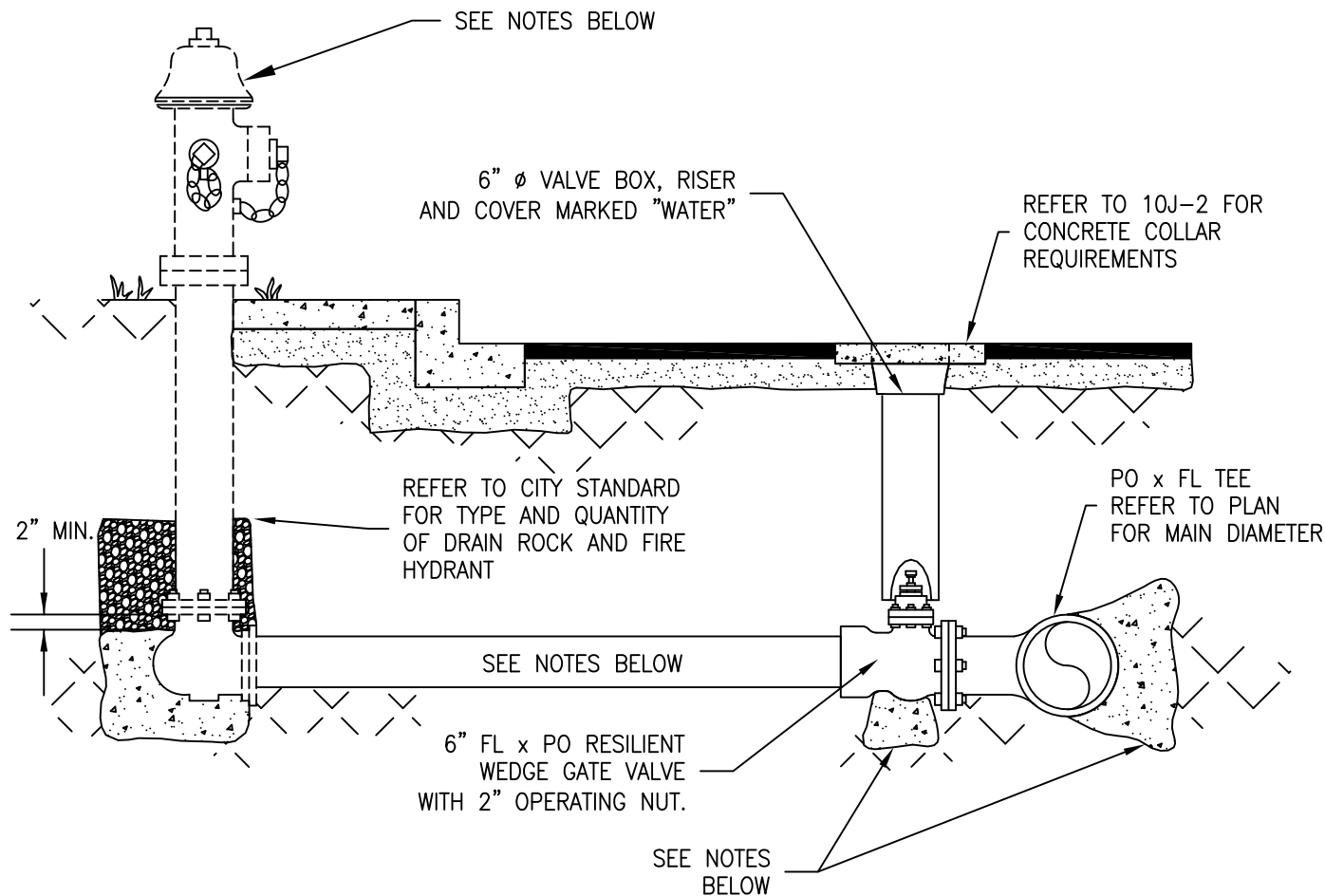
<u>DESCRIPTION</u>	<u>DRAWING #</u>
INDEX	10F-1
<u>FIRE SERVICES OFF NEW MAINS</u>	
6" FIRE HYDRANT SERVICE	10F-2
FIRE SERVICE	10F-3
<u>FIRE SERVICES OFF EXISTING MAINS</u>	
6" FIRE HYDRANT SERVICE	10F-4
FIRE SERVICE	10F-5



DATE
7/2001
REV
9/2016

APPENDIX 10F
FIRE PROTECTION INSTALLATIONS
INDEX

DRAWING NUMBER
10F-1



NOTES:

1. REFERENCE NAC 445A, TMWA CONSTRUCTION AND DESIGN STANDARDS AND JURISDICTIONAL FIRE AGENCY FOR REQUIRED PIPE MATERIALS. POLYETHYLENE WRAP TO BE USED ON ALL DUCTILE IRON PIPE AND FITTINGS PER AWWA C105.
2. REFER TO PLAN FOR ACTUAL DIAMETER AND LENGTH FOR HYDRANT LATERAL.
3. KEEP A MINIMUM OF 2" CLEARANCE BETWEEN FLANGES/BOLTS AND CONCRETE.
4. LOCATION OF FIRE HYDRANT TO BE DETERMINED BY APPROPRIATE GOVERNMENTAL FIRE AGENCY. FIRE HYDRANT AND BARREL EXTENSION TO BE SUPPLIED BY OTHERS.
5. REFER TO JURISDICTIONAL AGENCY'S ADOPTED FIRE CODE FOR HYDRANT TYPE, COLOR AND CONNECTION TYPES.
6. ALL EXPOSED METAL MUST BE COATED AND WRAPPED.
7. REFER TO CITY STANDARDS OR APPENDIX 10L FOR THRUST BLOCK REQUIREMENTS. USE THE MOST CONSERVATIVE.



DATE

7/2001

REV

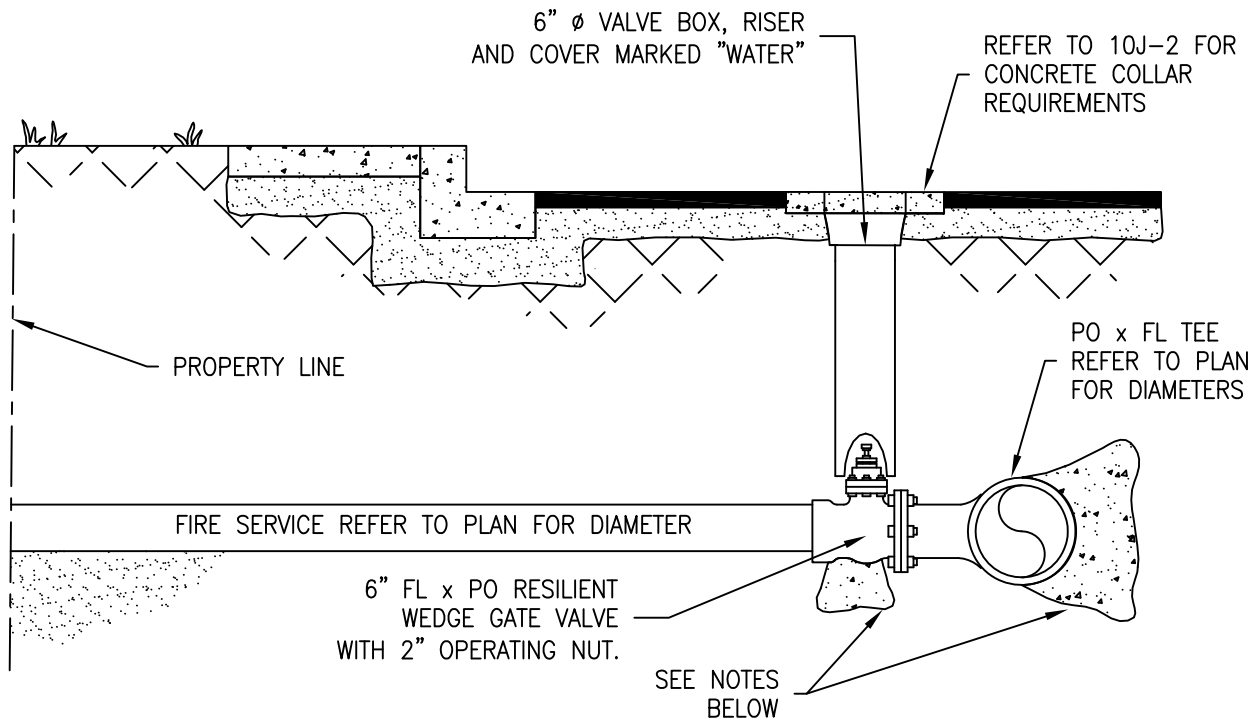
9/2016

APPENDIX 10F
FIRE PROTECTION INSTALLATIONS

6" FIRE HYDRANT SERVICE
OFF NEW MAINS

DRAWING NUMBER

10F-2



NOTES:

1. REFERENCE NAC 445A, TMWA CONSTRUCTION AND DESIGN STANDARDS AND JURISDICTIONAL FIRE AGENCY FOR REQUIRED PIPE MATERIALS. POLYETHYLENE WRAP TO BE USED ON ALL DUCTILE IRON PIPE AND FITTINGS PER AWWA C105.
2. REFER TO PLAN FOR ACTUAL DIAMETER AND LENGTH FOR FIRE SERVICE LATERAL.
3. KEEP A MINIMUM OF 2" CLEARANCE BETWEEN FLANGES/BOLTS AND CONCRETE.
4. ALL EXPOSED METAL MUST BE COATED AND WRAPPED.
5. REFER TO CITY STANDARDS OR APPENDIX 10L FOR THRUST BLOCK REQUIREMENTS. USE THE MOST CONSERVATIVE.
4. REFER TO APPROVED PLAN AND APPENDIX 10A FOR APPROPRIATE BACKFLOW DEVICE.



DATE

7/2001

REV

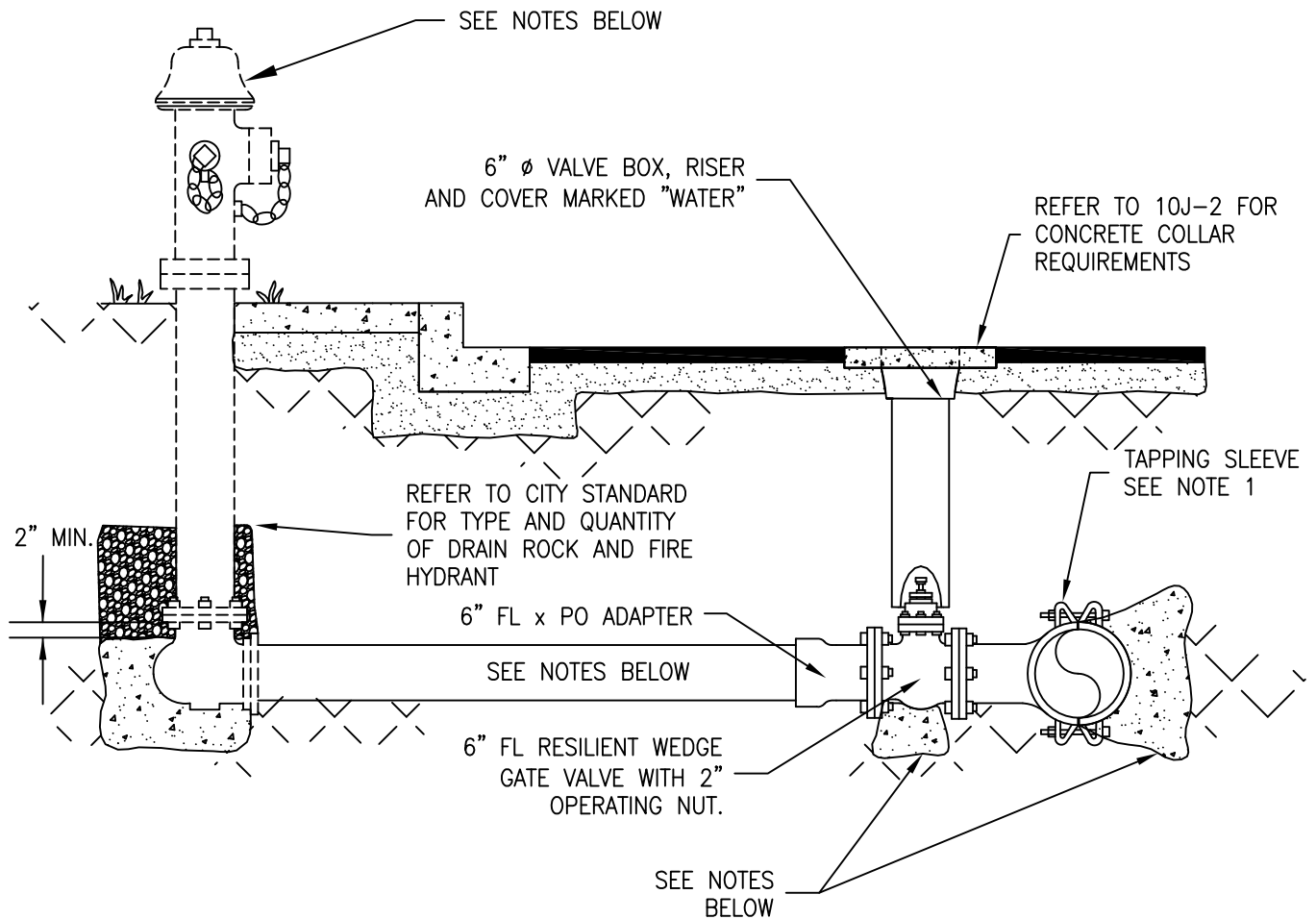
9/2016

APPENDIX 10F
FIRE PROTECTION INSTALLATIONS

FIRE SERVICE
OFF NEW MAIN

DRAWING NUMBER

10F-3



NOTES:

1. REFER TO APPENDIX 10D FOR TAPPING SLEEVE DETAILS.
2. REFERENCE NAC 445A, TMWA CONSTRUCTION AND DESIGN STANDARDS AND JURISDICTIONAL FIRE AGENCY FOR REQUIRED PIPE MATERIALS. POLYETHYLENE WRAP TO BE USED ON ALL DUCTILE IRON PIPE AND FITTINGS PER AWWA C105.
3. REFER TO PLAN FOR ACTUAL DIAMETER AND LENGTH FOR HYDRANT LATERAL.
4. KEEP A MINIMUM OF 2" CLEARANCE BETWEEN FLANGES/BOLTS AND CONCRETE.
5. LOCATION OF FIRE HYDRANT TO BE DETERMINED BY APPROPRIATE GOVERNMENTAL FIRE AGENCY. FIRE HYDRANT AND BARREL EXTENSION TO BE SUPPLIED BY OTHERS.
6. REFER TO JURISDICTIONAL AGENCY'S ADOPTED FIRE CODE FOR HYDRANT TYPE, COLOR AND CONNECTION TYPES.
7. ALL EXPOSED METAL MUST BE COATED AND WRAPPED.
8. REFER TO CITY STANDARDS OR APPENDIX 10L FOR THRUST BLOCK REQUIREMENTS. USE THE MOST CONSERVATIVE.
9. PRESSURE TEST TAPPING SLEEVE AND VALVE TO MANUFACTURER'S RECOMMENDATION.



DATE

7/2001

REV

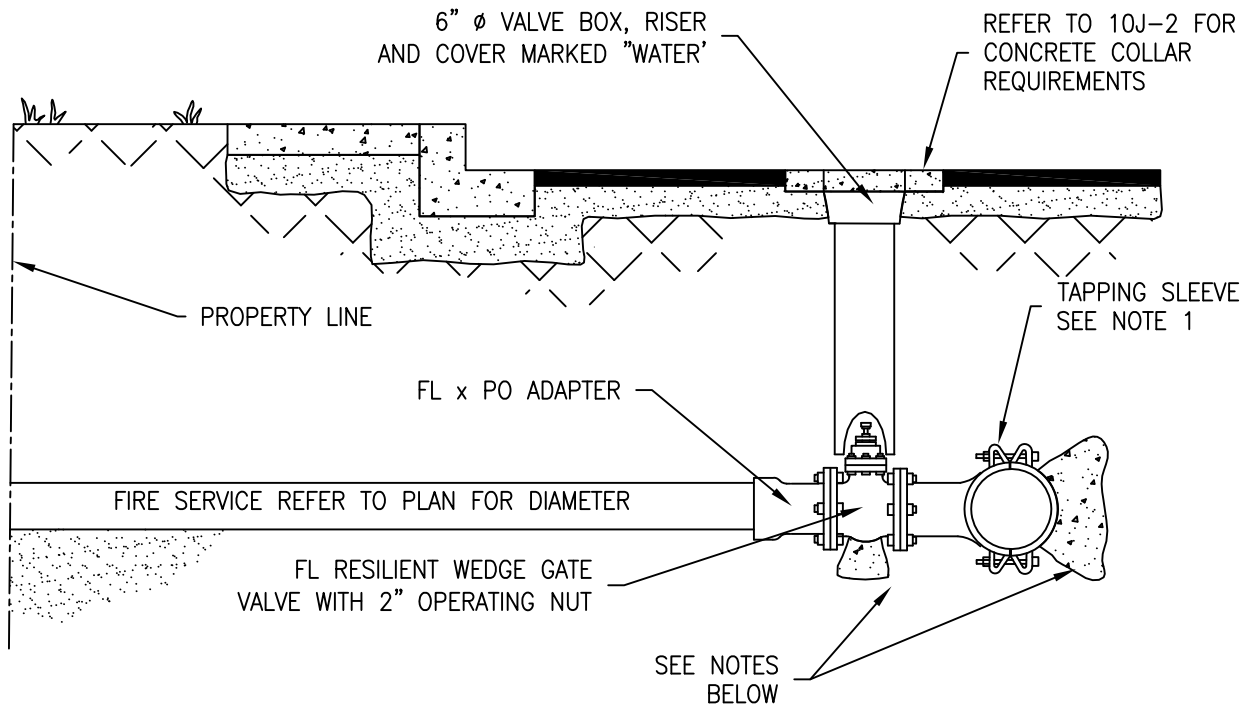
9/2016

APPENDIX 10F
FIRE PROTECTION INSTALLATIONS

6" FIRE HYDRANT SERVICE
OFF EXISTING MAIN

DRAWING NUMBER

10F-4



NOTES:

1. REFER TO APPENDIX 10D FOR TAPPING SLEEVE DETAILS.
2. REFERENCE NAC 445A, TMWA CONSTRUCTION AND DESIGN STANDARDS AND JURISDICTIONAL FIRE AGENCY FOR REQUIRED PIPE MATERIALS. POLYETHYLENE WRAP TO BE USED ON ALL DUCTILE IRON PIPE AND FITTINGS PER AWWA C105.
3. REFER TO PLAN FOR DIAMETER AND LENGTH OF SERVICE LATERAL.
7. KEEP A MINIMUM OF 2" CLEARANCE BETWEEN FLANGES/BOLTS AND CONCRETE.
8. ALL EXPOSED METAL MUST BE COATED AND WRAPPED.
9. REFER TO CITY STANDARDS OR APPENDIX 10L FOR THRUST BLOCK REQUIREMENTS. USE THE MOST CONSERVATIVE.
10. REFER TO APPROVED PLAN AND APPENDIX 10A FOR APPROPRIATE BACKFLOW DEVICE.
11. PRESSURE TEST TAPPING SLEEVE AND VALVE TO MANUFACTURER'S RECOMMENDATION.



DATE

7/2001

REV

9/2016

APPENDIX 10F
FIRE PROTECTION INSTALLATION

FIRE SERVICE
OFF EXISTING MAIN

DRAWING NUMBER

10F-5