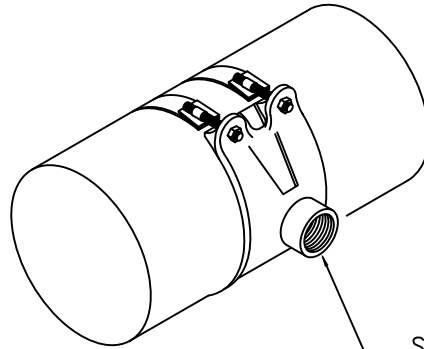
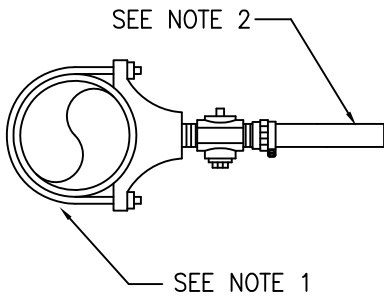
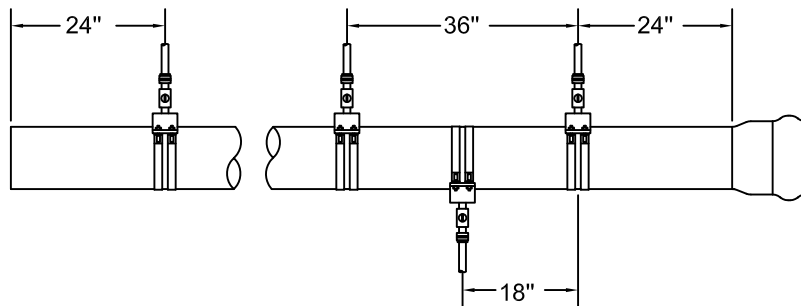


NOTES:

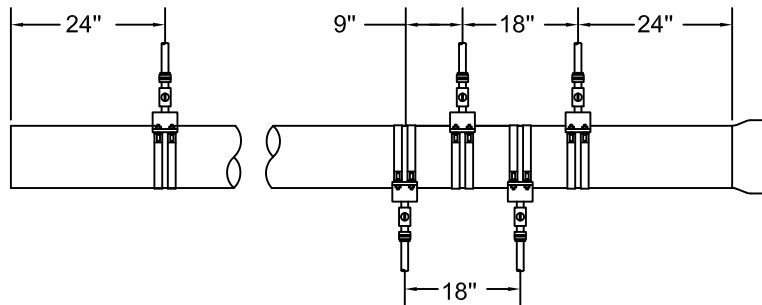
1. SERVICE CLAMP SIZE IS DEPENDENT UPON THE SIZE AND TYPE OF MAIN.
2. SDR-9 CTS HDPE TUBING, LENGTH AND DIAMETER TO BE DETERMINED BY ENGINEER. REFER TO APPROVED PLAN.
3. STOP CORP IP THREAD INLET, COMPRESSION OUTLET, DIAMETER TO MATCH TAP SIZE AS SHOWN ON PLAN.
4. INSERT RIGID STAINLESS STEEL LINER TO SDR-9 CTS HDPE TUBING.
5. SERVICE TAPS OFF OF EXISTING PVC MAINS SHALL USE TAPPED FULL CIRCLE REPAIR CLAMP, MINIMUM LENGTH: 15". MANUFACTURER SHALL BE APPROVED BY TMWA.



SERVICE SADDLE TO BE CONSTRUCTED OF DUCTILE IRON WITH FUSED NYLON COATING AND DOUBLE STAINLESS STEEL STRAPS. SEE NOTE 5.



C-900 PVC  
OR  
TRANSITE



DUCTILE OR  
CAST IRON  
OR STEEL



DATE

7/2001

REV

9/2016

APPENDIX 10H  
SERVICE TAP INSTALLATIONS  
FOR 1", 1.25", 1.5" AND 2" SERVICE TAPS

DRAWING NUMBER

10H-2