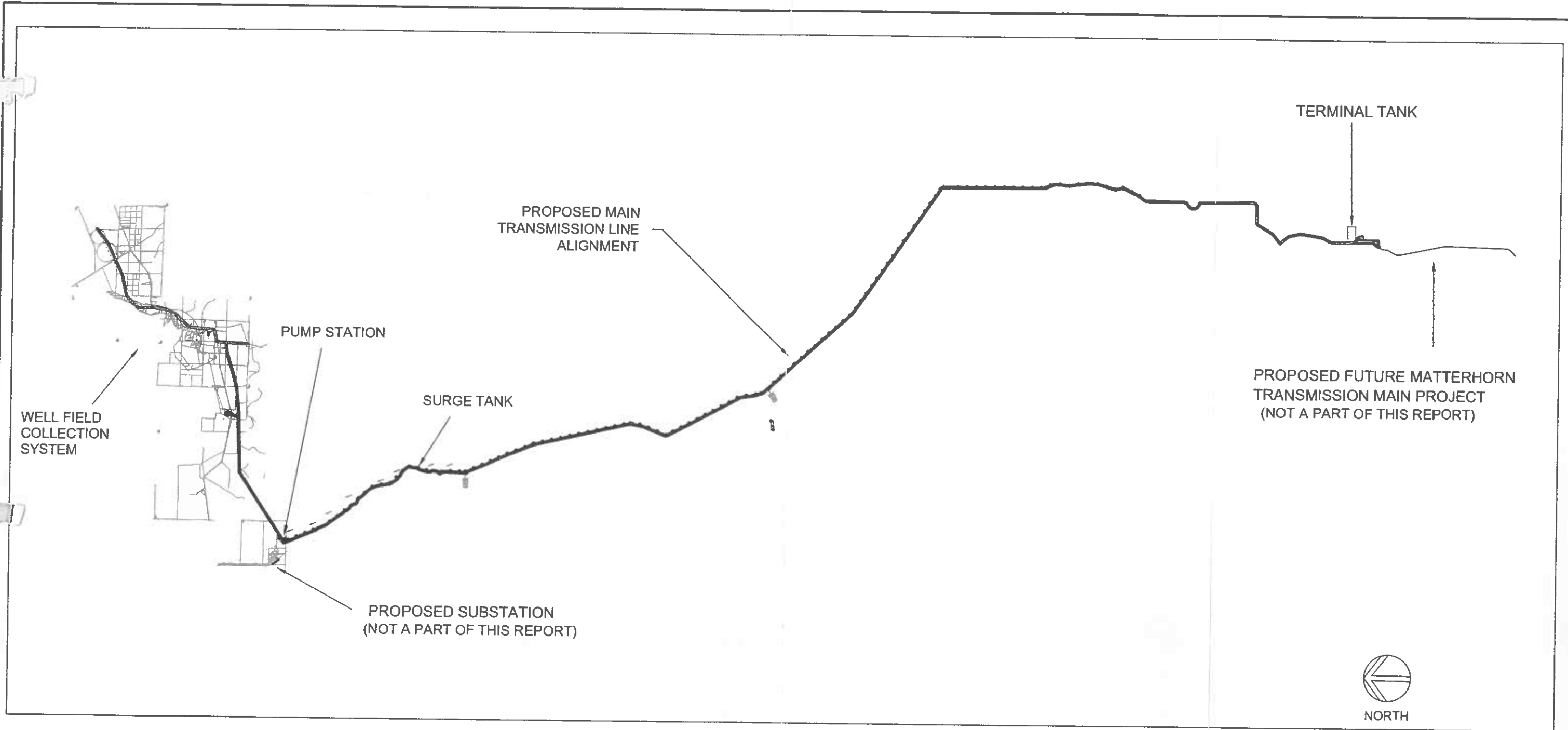


Appendix A



NOTES

- 1. BASE MAP PROVIDED BY ECO:LOGIC ENGINEERING, LLC OF RENO, NEVADA.

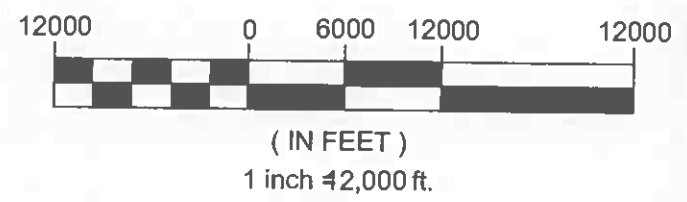


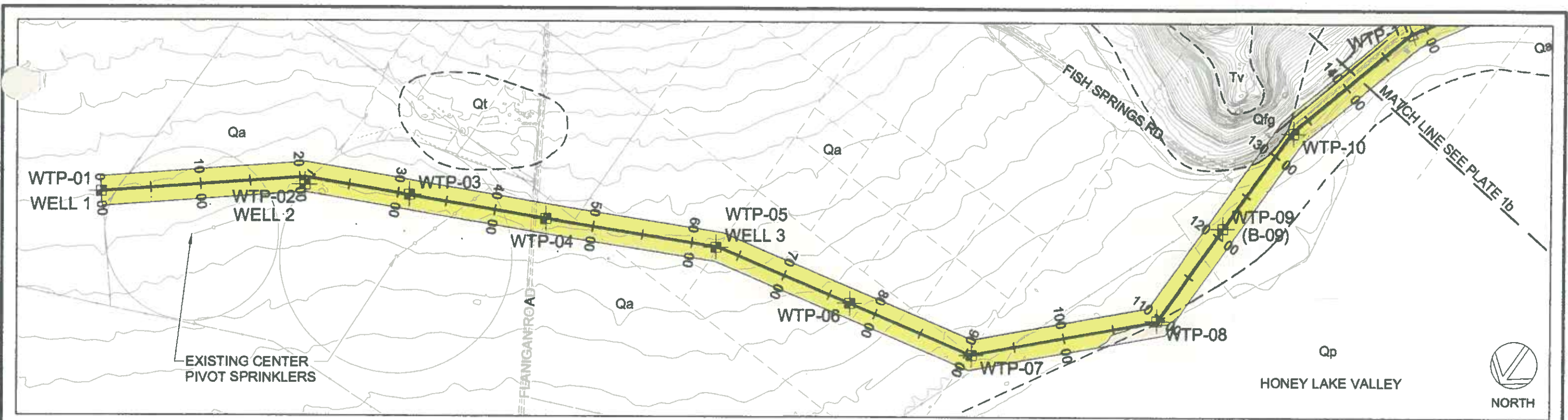
PLATE NO. 1	PROJECT NO. 67055025
	CAD DWG FILE: fishsprings_pt1
	DRAWN BY:
	CHECKED BY:
	DESIGNED BY:
COPYRIGHT:	

PROJECT OVERVIEW MAP
FISH SPRINGS WATER SUPPLY PROJECT
ECO:LOGIC ENGINEERING, LLC.
 HONEY LAKE VALLEY TO LEMMON VALLEY, WASHOE COUNTY, NEVADA

REVISIONS

Terracon
 Consulting Engineers & Scientists
 1360 Greg Street, Suite 111-112
 Sparks, Nevada 89431
 Phone: (775) 351-2400 Fax: (775) 351-2423

P:\Terracon\67055025 Fish Springs Water Supply\FISH_SPRINGS_PLT1a-2f.dwg, 6/7/2008 12:25:39 PM, HP DeskJet 1220C.pc3



LEGEND

APPROXIMATE TEST PIT LOCATION
 APPROXIMATE BORING LOCATION

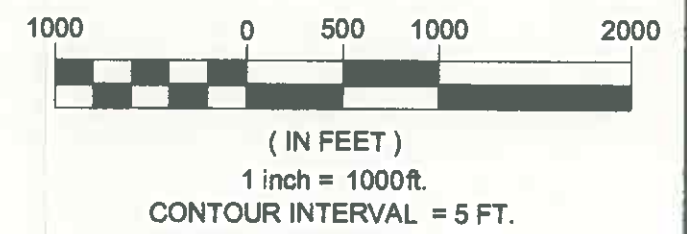
ESTIMATED DEPTH TO BEDROCK (BELOW EXISTING GROUND SURFACE)

> 8 FEET
 2 FEET TO 8 FEET
 < 2 FEET

QUATERNARY ALLUVIUM	QUATERNARY FAN GRAVELS	TERTIARY VOLCANICS
QUATERNARY TUFA	QUATERNARY FANS	MESOZOIC GRANITIC ROCKS
QUATERNARY SANDS - UNDIFFERENTIATED	BEACH BAR DEPOSITS	
PLAYA DEPOSITS	OLD ALLUVIUM	

NOTES

1. BASE MAP PROVIDED BY ECO:LOGIC ENGINEERING, LLC OF RENO, NEVADA.



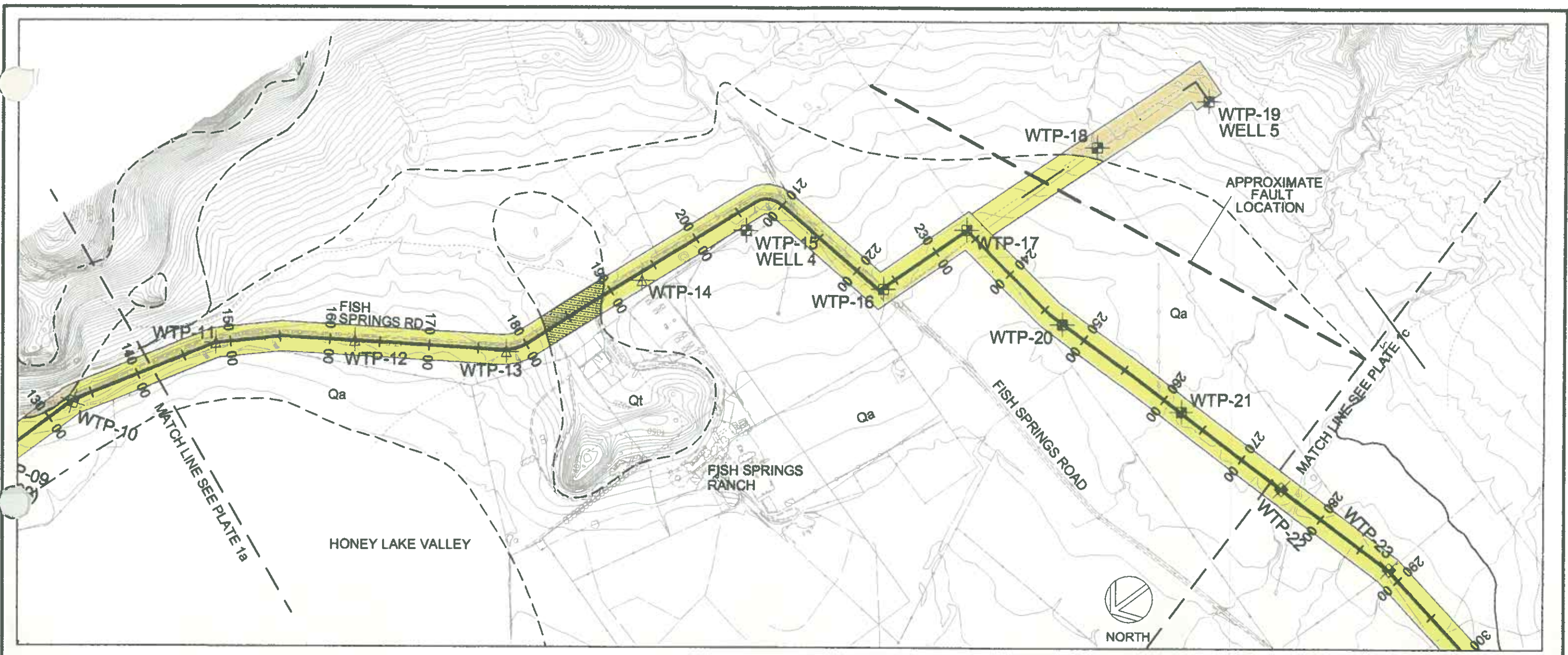
1a PLATE NO.	PROJECT NO. 67055025
	CAD DWG FILE: fishsprings_plt1a-2f
	DRAWN BY: JKP
	CHECKED BY:
	DESIGNED BY:
COPYRIGHT:	

WELL FIELD COLLECTION SYSTEM GEOTECHNICAL ALIGNMENT MAPS
FISH SPRINGS WATER SUPPLY PROJECT
ECO:LOGIC ENGINEERING, LLC
 HONEY LAKE VALLEY TO LEMMON VALLEY, WASHOE COUNTY, NEVADA

REVISIONS

Consulting Engineers & Scientists
 1380 Greg Street, Suite 111-112
 Sparks, Nevada 89431
 Phone: (775) 351-2400 Fax: (775) 351-2423

P:\Terracon\67055025 Fish Springs Water Supply\FISH_SPRINGS_PLT1a-2f.dwg, 6/7/2006 12:26:14 PM, HP DeskJet 1220C.pc3



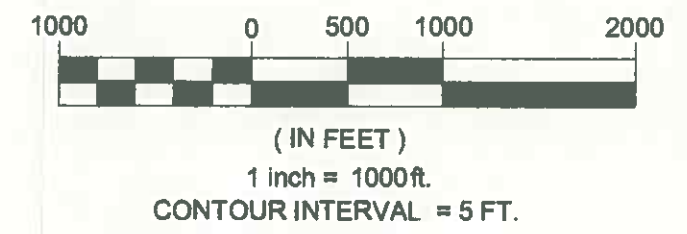
- LEGEND**
- WTP-01 [Symbol] APPROXIMATE TEST PIT LOCATION
 - WB-01 [Symbol] APPROXIMATE BORING LOCATION
 - WTP-01 [Symbol] APPROXIMATE UNEXPLORED TEST PIT LOCATION

- ESTIMATED DEPTH TO BEDROCK (BELOW EXISTING GROUND SURFACE)**
- [White Box] > 8 FEET
 - [Hatched Box] 2 FEET TO 8 FEET
 - [Dotted Box] < 2 FEET

- | | | |
|--|--|---|
| [Yellow Box] Qa QUATERNARY ALLUVIUM | [Light Brown Box] Qfg QUATERNARY FAN GRAVELS | [Purple Box] Tv TERTIARY VOLCANICS |
| [Orange Box] Qt QUATERNARY TUFA | [Light Brown Box] Qf QUATERNARY FANS | [Green Box] Mzg MESOZOIC GRANITIC ROCKS |
| [Red Box] Qbu QUATERNARY SANDS - UNDIFFERENTIATED PLAYA DEPOSITS | [Light Brown Box] Qb BEACH BAR DEPOSITS | |
| [White Box] Qp | [Light Brown Box] Qoa OLD ALLUVIUM | |

NOTES

1. BASE MAP PROVIDED BY ECO:LOGIC ENGINEERING, LLC OF RENO, NEVADA.



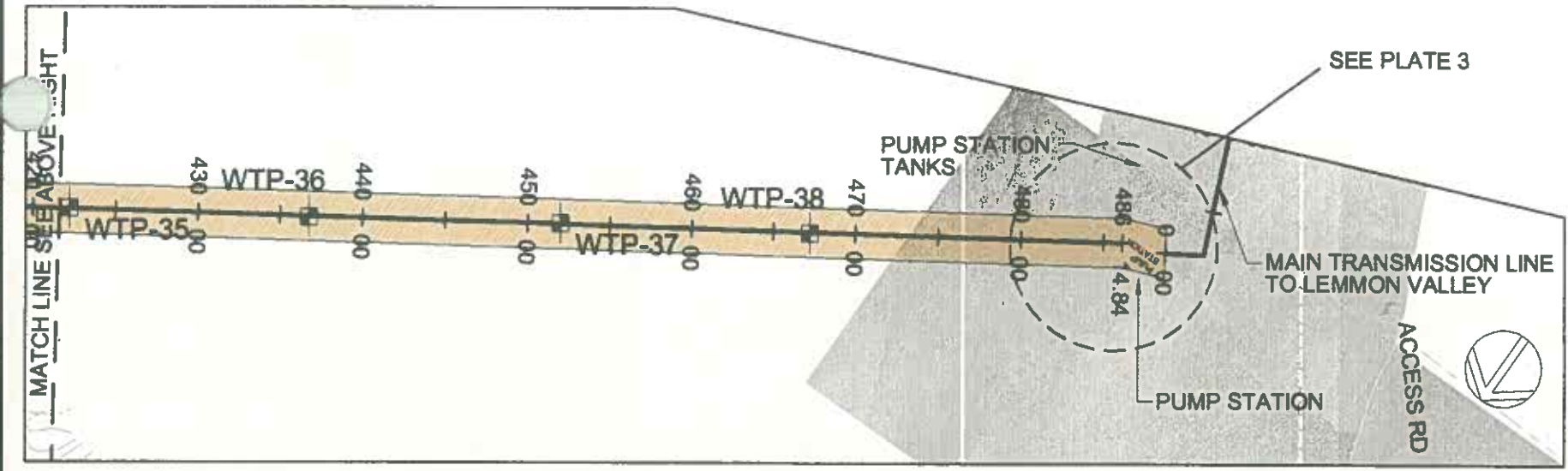
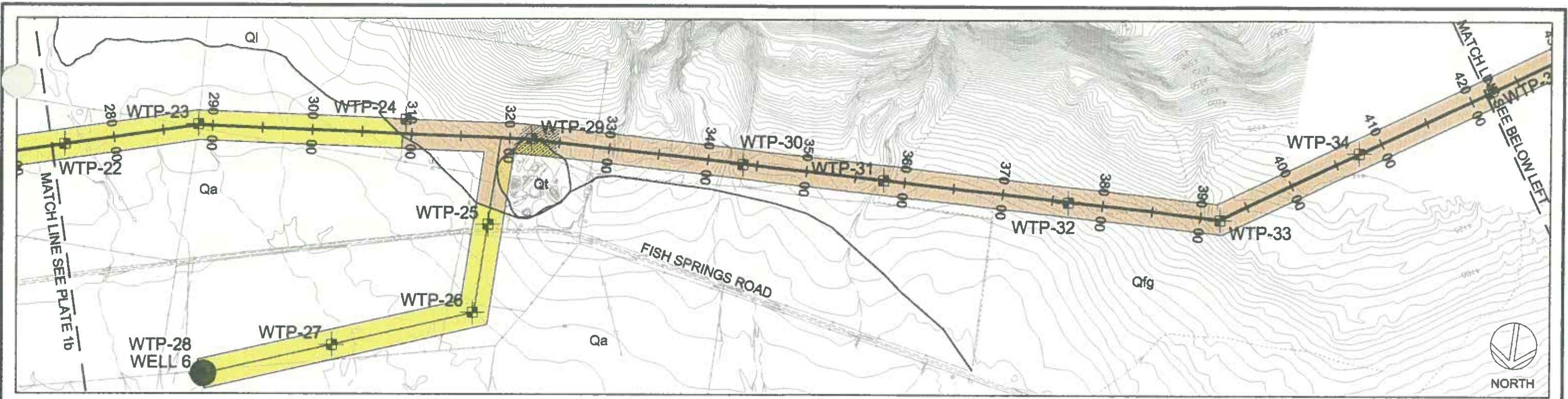
1b PLATE NO.	PROJECT NO. 67055025
	CAD DWG FILE: fishsprings_plt1a-2f
	DRAWN BY: JKP
	CHECKED BY:
	DESIGNED BY:
COPYRIGHT:	

WELL FIELD COLLECTION SYSTEM GEOTECHNICAL ALIGNMENT MAPS
FISH SPRINGS WATER SUPPLY PROJECT
ECO:LOGIC ENGINEERING, LLC
 HONEY LAKE VALLEY TO LEMMON VALLEY, WASHOE COUNTY, NEVADA

REVISIONS

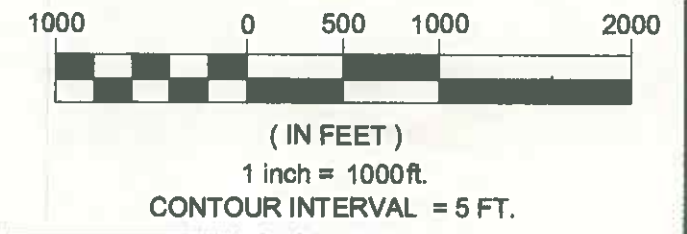
Terracon
 Consulting Engineers & Scientists
 1360 Greg Street, Suite 111-112
 Sparks, Nevada 89431
 Phone: (775) 351-2400 Fax: (775) 351-2423

P:\Terracon\67055025 Fish Springs Water Supply\FISH_SPRINGS_PLT1a-2f.dwg, 6/7/2006 12:31:06 PM, HP Desktop 1220C.pcs



LEGEND		ESTIMATED DEPTH TO BEDROCK (BELOW EXISTING GROUND SURFACE)			
WTP-01	APPROXIMATE TEST PIT LOCATION	[White Box]	> 8 FEET	[Yellow Box]	Qa QUATERNARY ALLUVIUM
WB-01	APPROXIMATE BORING LOCATION	[Hatched Box]	2 FEET TO 8 FEET	[Orange Box]	Qt QUATERNARY TUFFA
		[Dotted Box]	< 2 FEET	[Red Box]	Qsu QUATERNARY SANDS - UNDIFFERENTIATED PLAYA DEPOSITS
				[Light Yellow Box]	Qp QUATERNARY SANDS - UNDIFFERENTIATED PLAYA DEPOSITS
				[Light Orange Box]	Qfg QUATERNARY FAN GRAVELS
				[Light Green Box]	Qf QUATERNARY FANS
				[Light Purple Box]	Tv TERTIARY VOLCANICS
				[Light Blue Box]	Qb BEACH BAR DEPOSITS
				[Light Green Box]	Mzg MESOZOIC GRANITIC ROCKS
				[Light Yellow Box]	Qoa OLD ALLUVIUM

NOTES
 1. BASE MAP PROVIDED BY ECO:LOGIC ENGINEERING, LLC OF RENO, NEVADA.

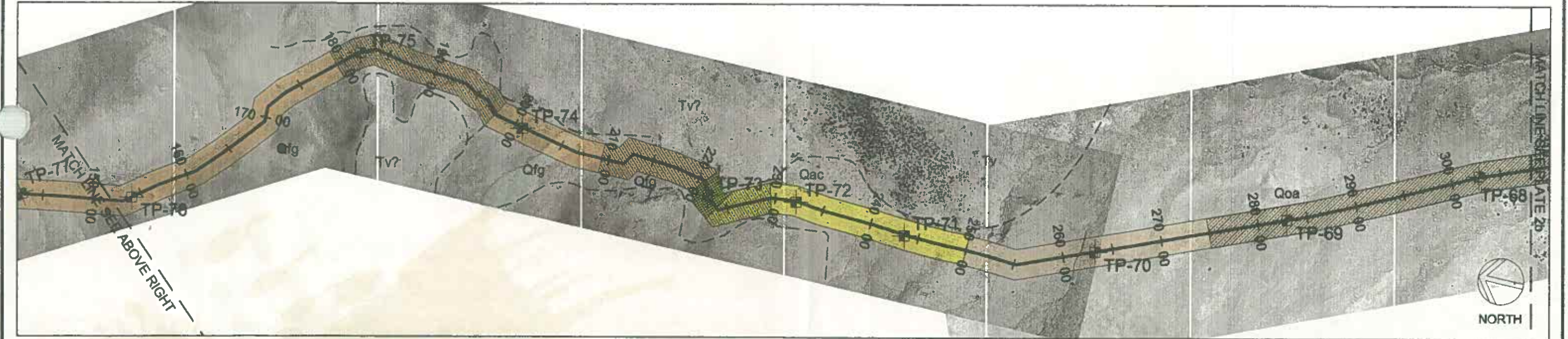
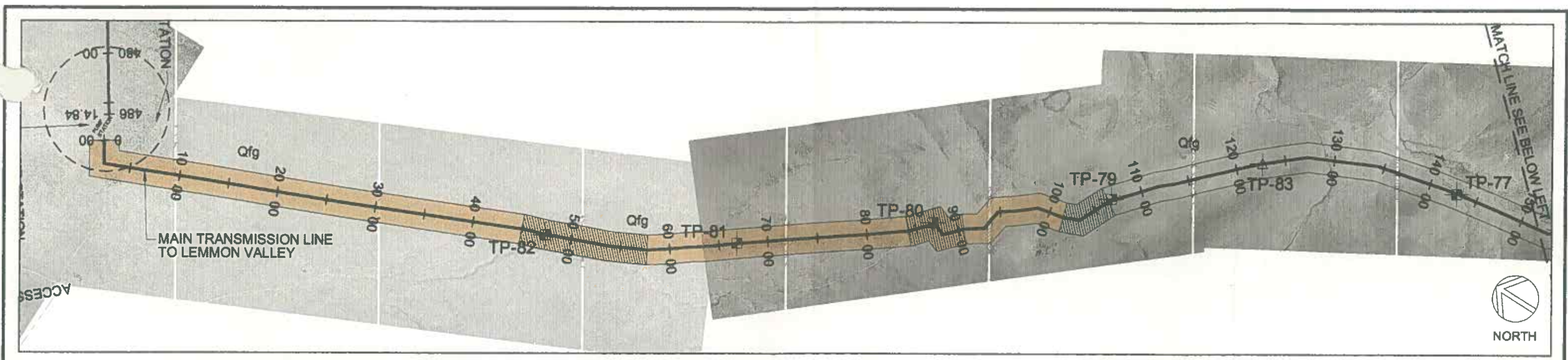


1c	PROJECT NO.	67055025
	CAD DWG FILE:	fishsprings_plt1a-2f
	DRAWN BY:	JKP
	CHECKED BY:	
	DESIGNED BY:	
COPYRIGHT:		

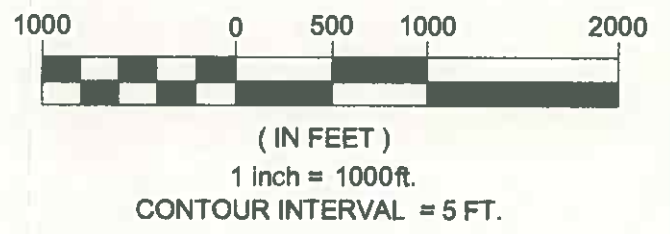
WELL FIELD COLLECTION SYSTEM GEOTECHNICAL ALIGNMENT MAPS
FISH SPRINGS WATER SUPPLY PROJECT
ECO:LOGIC ENGINEERING, LLC
 HONEY LAKE VALLEY TO LEMMON VALLEY, WASHOE COUNTY, NEVADA

REVISIONS	<p>Terracon Consulting Engineers & Scientists 1380 Greg Street, Suite 111-112 Sparks, Nevada 89431 Phone: (775) 351-2400 Fax: (775) 351-2423</p>

P:\Terracon\167055025 Fish Springs Water Supply\FISH_SPRINGS_PLT1a-2f.dwg, 6/7/2006 12:34:07 PM, HP DeskJet 1220C.pc3



LEGEND		ESTIMATED DEPTH TO BEDROCK (BELOW EXISTING GROUND SURFACE)		NOTES	
TP-01	APPROXIMATE TEST PIT LOCATION	[White Box]	> 8 FEET	[Qa Box]	QUATERNARY ALLUVIUM
B-01	APPROXIMATE BORING LOCATION	[Hatched Box]	2 FEET TO 8 FEET	[Qfg Box]	QUATERNARY FAN GRAVELS
TP-01	APPROXIMATE UNEXPLORED TEST PIT LOCATION	[Dotted Box]	< 2 FEET	[Qf Box]	QUATERNARY FANS
		[Red Box]		[Qb Box]	BEACH BAR DEPOSITS
		[Green Box]		[Qoa Box]	OLD ALLUVIUM
		[Purple Box]		[Tv Box]	TERTIARY VOLCANICS
		[Green Box]		[Mzg Box]	MESOZOIC GRANITIC ROCKS



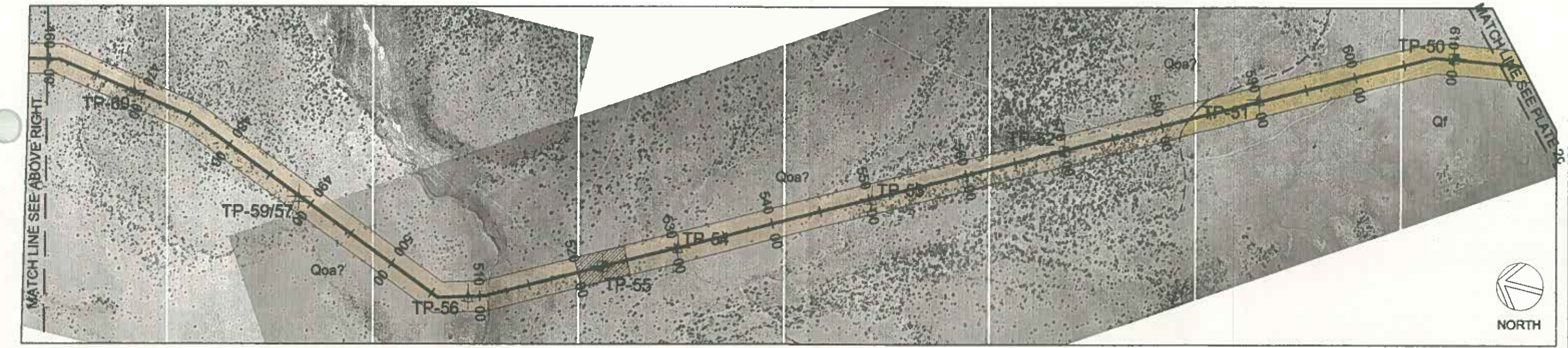
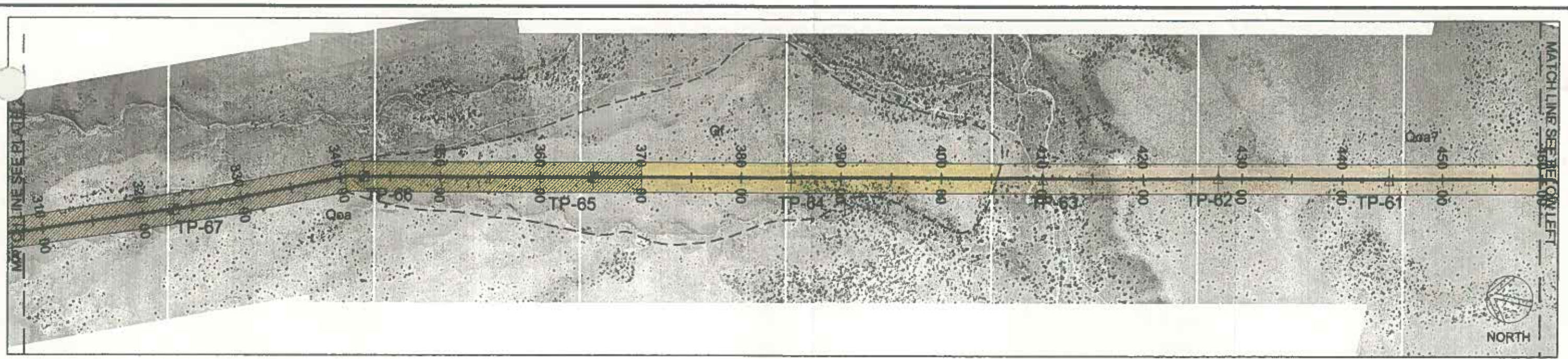
2a PLATE NO.	PROJECT NO. 67055025
	CAD DWG FILE: fishsprings_plt1a-2f
	DRAWN BY: JKP
	CHECKED BY:
	DESIGNED BY:
COPYRIGHT:	

MAIN TRANSMISSION LINE ALIGNMENT GEOTECHNICAL ALIGNMENT MAPS
FISH SPRINGS WATER SUPPLY PROJECT
ECO:LOGIC ENGINEERING, LLC
 HONEY LAKE VALLEY TO LEMMON VALLEY, WASHOE COUNTY, NEVADA

REVISIONS

Terracon
 Consulting Engineers & Scientists
 1360 Greg Street, Suite 111-112
 Sparks, Nevada 89431
 Phone: (775) 351-2400 Fax: (775) 351-2423

P:\Terracon\67055025 Fish Springs Water Supply\FISH_SPRINGS_PLT1a-2f.dwg, 6/7/2006 12:35:48 PM, HP DeskJet 1220C.pc3



LEGEND

- TP-01 [Symbol] APPROXIMATE TEST PIT LOCATION
- B-01 [Symbol] APPROXIMATE BORING LOCATION
- TP-01 [Symbol] APPROXIMATE UNEXPLORED TEST PIT LOCATION

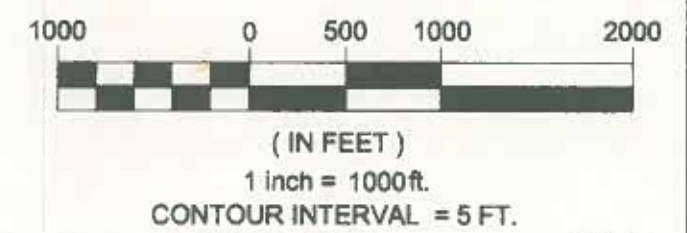
ESTIMATED DEPTH TO BEDROCK (BELOW EXISTING GROUND SURFACE)

- [Symbol] > 8 FEET
- [Symbol] 2 FEET TO 8 FEET
- [Symbol] < 2 FEET

- [Symbol] Qa QUATERNARY ALLUVIUM
- [Symbol] Ql QUATERNARY TUFA
- [Symbol] Qau QUATERNARY SANDS - UNDIFFERENTIATED PLAYA DEPOSITS
- [Symbol] Qp QUATERNARY FAN GRAVELS
- [Symbol] Qf QUATERNARY FANS
- [Symbol] Qb BEACH BAR DEPOSITS
- [Symbol] Qoa OLD ALLUVIUM
- [Symbol] Tv TERTIARY VOLCANICS
- [Symbol] Mzg MESOZOIC GRANITIC ROCKS

NOTES

1. BASE MAP PROVIDED BY ECO:LOGIC ENGINEERING, LLC OF RENO, NEVADA.



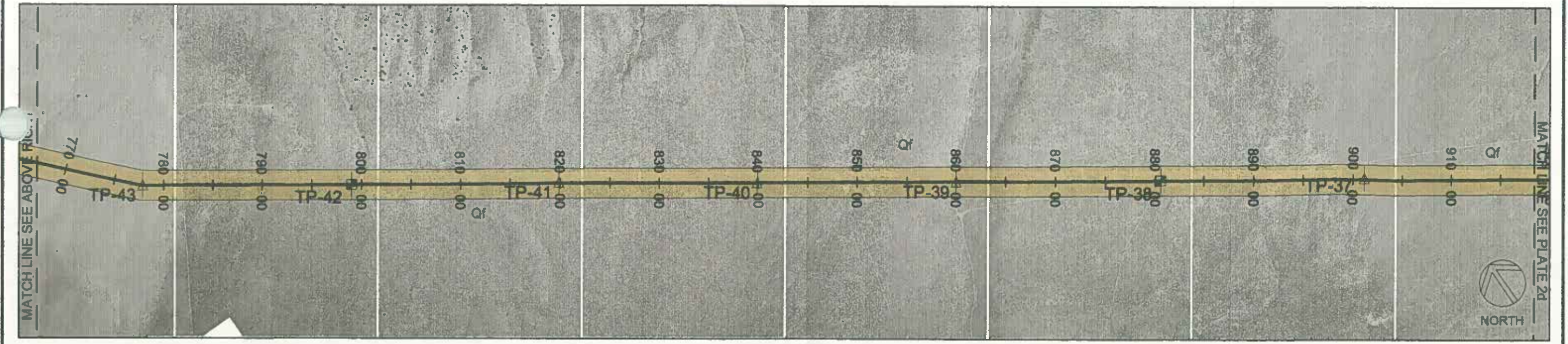
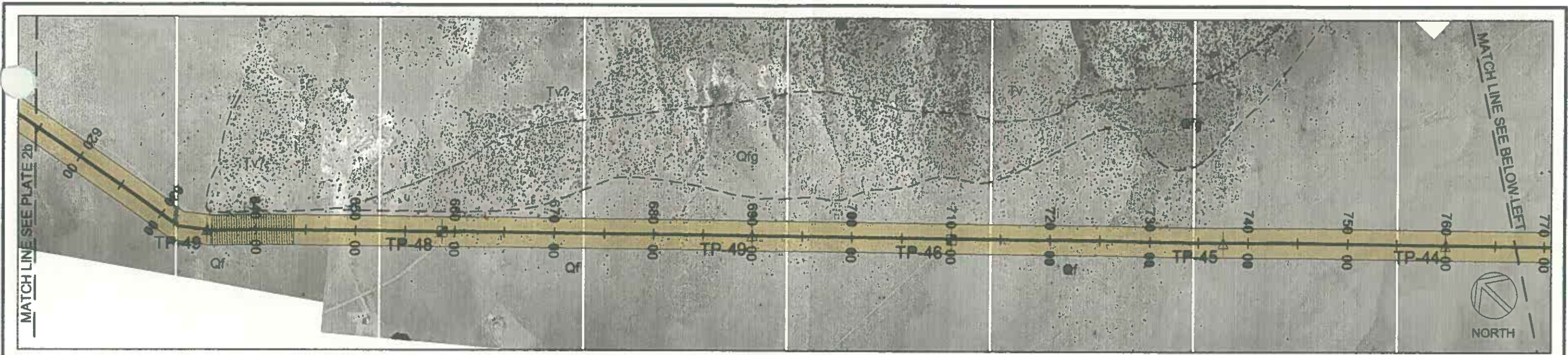
2b PLATE NO.	PROJECT NO. 07066025
	CAD DWG FILE: fishsprings_plt1a-2f
	DRAWN BY: JKP
	CHECKED BY:
	DESIGNED BY:
	COPYRIGHT:

MAIN TRANSMISSION LINE ALIGNMENT GEOTECHNICAL ALIGNMENT MAPS
FISH SPRINGS WATER SUPPLY PROJECT
ECO:LOGIC ENGINEERING, LLC
 HONEY LAKE VALLEY TO LEMMON VALLEY, WASHOE COUNTY, NEVADA

REVISIONS

Terracon
 Consulting Engineers & Scientists
 1380 Greg Street, Suite 111-112
 Sparks, Nevada 89431
 Phone: (775) 351-2400 Fax: (775) 351-2423

P:\Terracon\67055025 Fish Springs Water Supply\FISH_SPRINGS_PLT1a-2f.dwg, 6/7/2006 12:39:56 PM, HP DeskJet 1220C.pcs



LEGEND

- TP-01 [Symbol] APPROXIMATE TEST PIT LOCATION
- B-01 [Symbol] APPROXIMATE BORING LOCATION
- TP-01 [Symbol] APPROXIMATE UNEXPLORED TEST PIT LOCATION

ESTIMATED DEPTH TO BEDROCK (BELOW EXISTING GROUND SURFACE)

- [Symbol] > 8 FEET
- [Symbol] 2 FEET TO 8 FEET
- [Symbol] < 2 FEET

- | | | |
|---|-------------------------------------|--------------------------------------|
| [Symbol] Qa QUATERNARY ALLUVIUM | [Symbol] Qfg QUATERNARY FAN GRAVELS | [Symbol] Tv TERTIARY VOLCANICS |
| [Symbol] Qt QUATERNARY TUFA | [Symbol] Qf QUATERNARY FANS | [Symbol] Mzg MESOZOIC GRANITIC ROCKS |
| [Symbol] Qsu QUATERNARY SANDS - UNDIFFERENTIATED PLAYA DEPOSITS | [Symbol] Qb BEACH BAR DEPOSITS | |
| [Symbol] Qp | [Symbol] Qoa OLD ALLUVIUM | |

NOTES

1. BASE MAP PROVIDED BY ECO:LOGIC ENGINEERING, LLC OF RENO, NEVADA.



(IN FEET)
1 inch = 1000 ft.
CONTOUR INTERVAL = 5 FT.

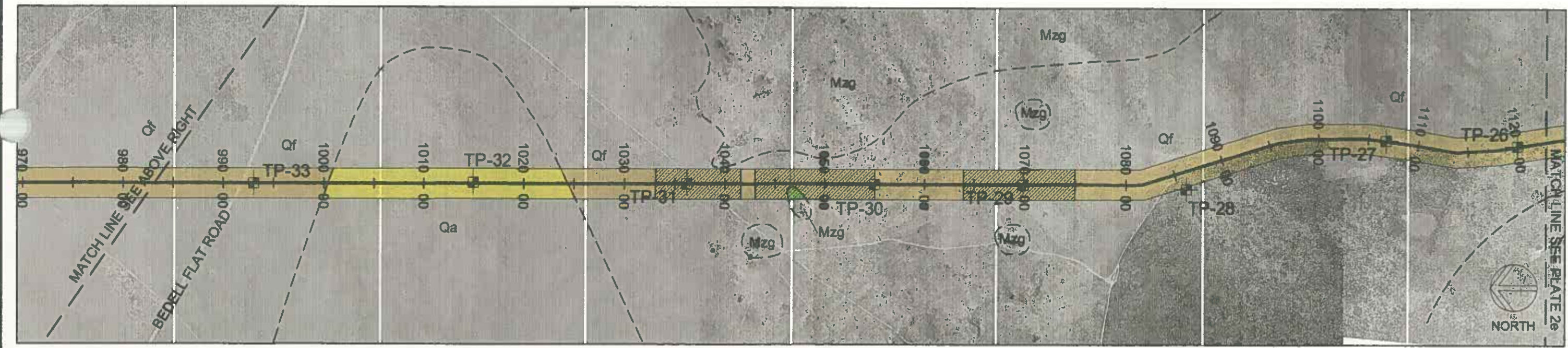
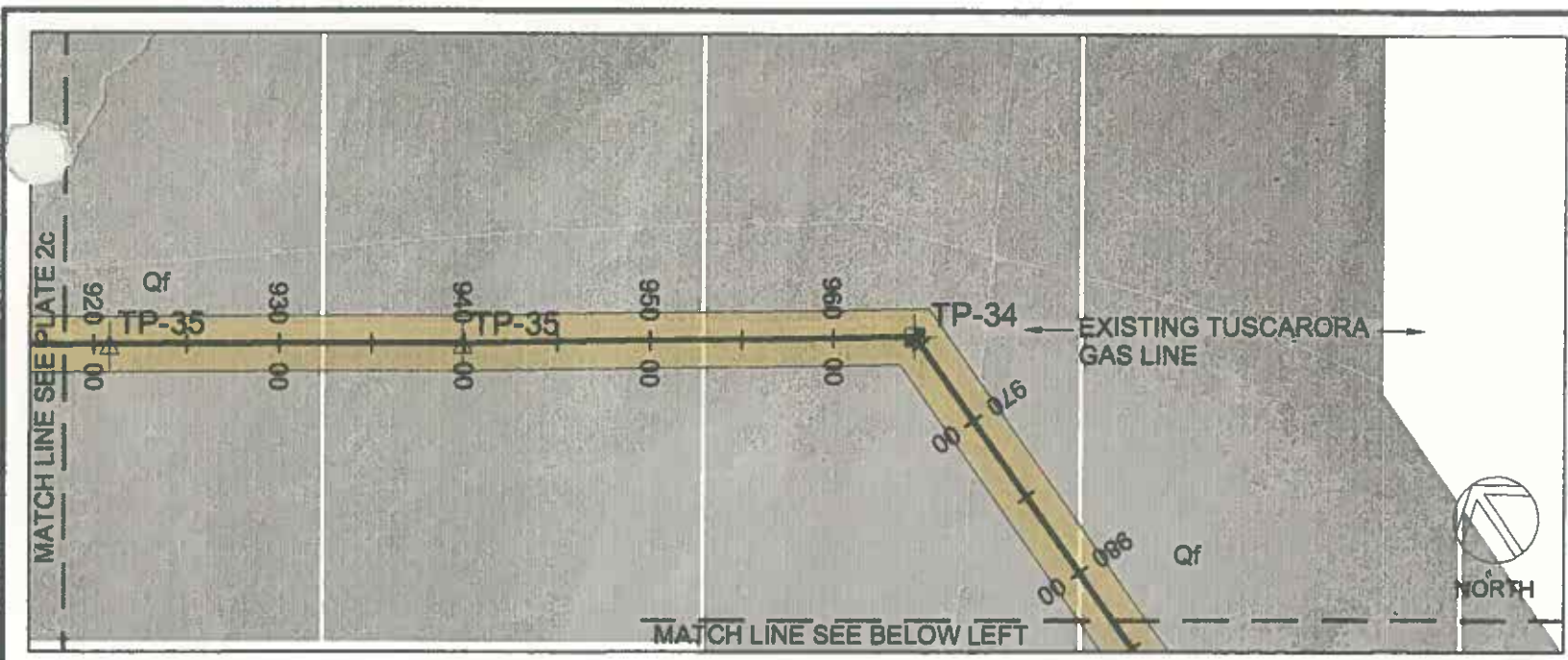
2c PLATE NO.	PROJECT NO. 67055025
	CAD DWG FILE: fishsprings_plt1a-2f
	DRAWN BY: JKP
	CHECKED BY:
	DESIGNED BY:
COPYRIGHT:	

MAIN TRANSMISSION LINE ALIGNMENT GEOTECHNICAL ALIGNMENT MAPS
FISH SPRINGS WATER SUPPLY PROJECT
ECO:LOGIC ENGINEERING, LLC
 HONEY LAKE VALLEY TO LEMMON VALLEY, WASHOE COUNTY, NEVADA

REVISIONS

Terracon
 Consulting Engineers & Scientists
 1360 Greg Street, Suite 111-112
 Sparks, Nevada 89431
 Phone: (775) 351-2400 Fax: (775) 351-2423

P:\Terracon\67055025 Fish Springs Water Supply\FISH_SPRINGS_PLT1a-21.dwg, 6/7/2006 12:43:23 PM, HP DeskJet 1220C.pcs



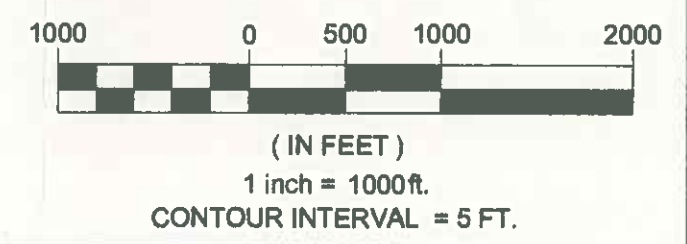
- LEGEND**
- TP-01 [Symbol] APPROXIMATE TEST PIT LOCATION
 - B-01 [Symbol] APPROXIMATE BORING LOCATION
 - TP-01 [Symbol] APPROXIMATE UNEXPLORED TEST PIT LOCATION

- ESTIMATED DEPTH TO BEDROCK (BELOW EXISTING GROUND SURFACE)**
- [White Box] > 8 FEET
 - [Hatched Box] 2 FEET TO 8 FEET
 - [Dotted Box] < 2 FEET

- | | | |
|--|--|---|
| [Yellow Box] Qa QUATERNARY ALLUVIUM | [Light Brown Box] Qfg QUATERNARY FAN GRAVELS | [Purple Box] Tv TERTIARY VOLCANICS |
| [Orange Box] Qt QUATERNARY TUFA | [Light Orange Box] Qf QUATERNARY FANS | [Green Box] Mzg MESOZOIC GRANITIC ROCKS |
| [Red Box] Qsu QUATERNARY SANDS - UNDIFFERENTIATED PLAYA DEPOSITS | [Light Yellow Box] Qb BEACH BAR DEPOSITS | |
| [Light Grey Box] Qp QUATERNARY SANDS - UNDIFFERENTIATED PLAYA DEPOSITS | [Light Grey Box] Qoa OLD ALLUVIUM | |

NOTES

1. BASE MAP PROVIDED BY ECO:LOGIC ENGINEERING, LLC OF RENO, NEVADA.



2d

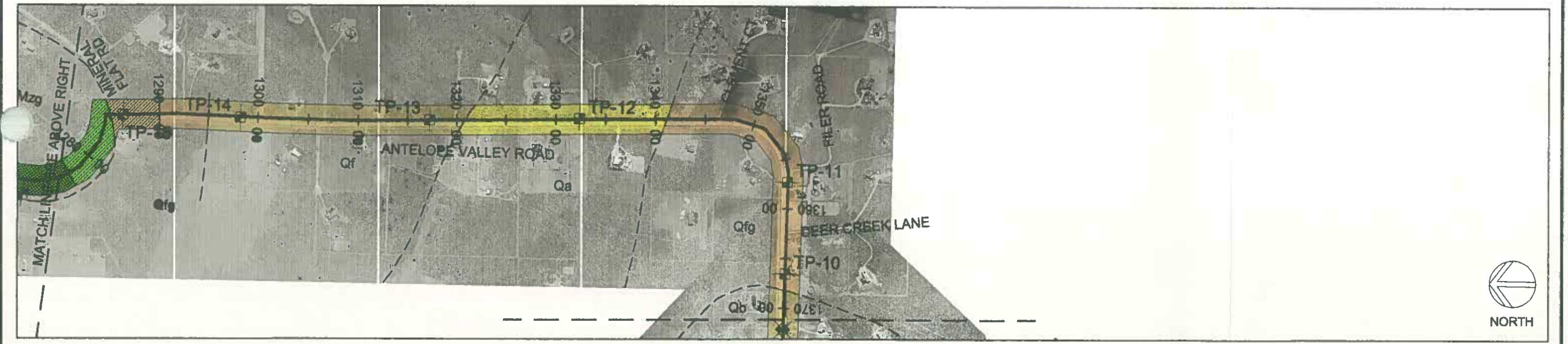
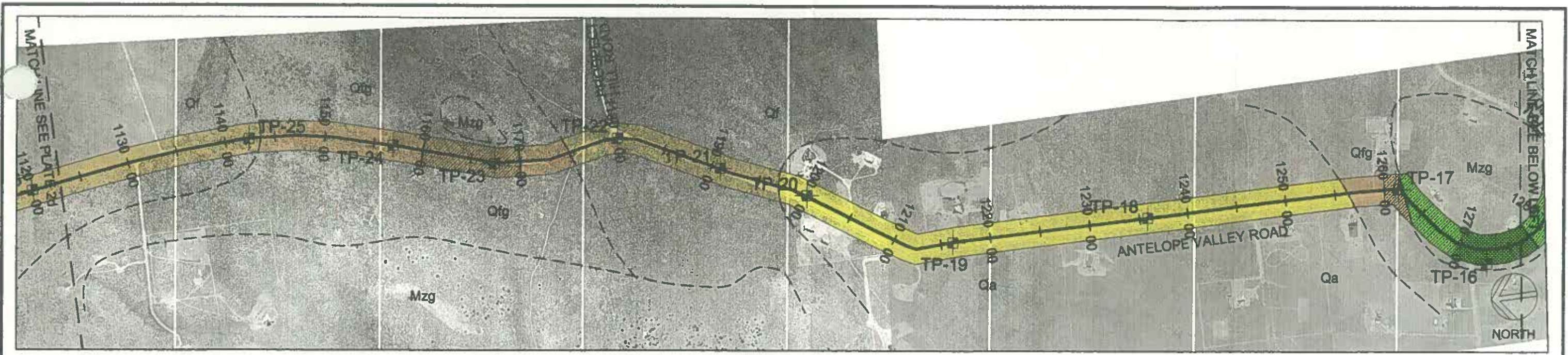
PROJECT NO.	67055025
CAD DWG FILE:	fishsprings_plt1a-2f
DRAWN BY:	JKP
CHECKED BY:	
DESIGNED BY:	
COPYRIGHT:	

MAIN TRANSMISSION LINE ALIGNMENT GEOTECHNICAL ALIGNMENT MAPS
FISH SPRINGS WATER SUPPLY PROJECT
ECO:LOGIC ENGINEERING, LLC
 HONEY LAKE VALLEY TO LEMMON VALLEY, WASHOE COUNTY, NEVADA

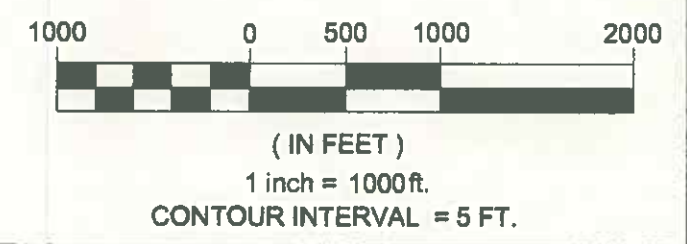
REVISIONS

Terracon
 Consulting Engineers & Scientists
 1380 Greg Street, Suite 111-112
 Sparks, Nevada 89431
 Phone: (775) 351-2400 Fax: (775) 351-2423

P:\Terracon\67055025 Fish Springs Water Supply\FISH_SPRINGS_PLT1a-21.dwg, 6/7/2006 12:50:27 PM, HP DeskJet 1220C.pcs



LEGEND		ESTIMATED DEPTH TO BEDROCK (BELOW EXISTING GROUND SURFACE)		NOTES	
TP-01	APPROXIMATE TEST PIT LOCATION	> 8 FEET	QUATERNARY ALLUVIUM	TERTIARY VOLCANICS	1. BASE MAP PROVIDED BY ECO:LOGIC ENGINEERING, LLC OF RENO, NEVADA.
B-01	APPROXIMATE BORING LOCATION	2 FEET TO 8 FEET	QUATERNARY TUFFA	MESOZOIC GRANITIC ROCKS	
		< 2 FEET	QUATERNARY SANDS - UNDIFFERENTIATED PLAYA DEPOSITS	QUATERNARY FAN GRAVELS	
			QUATERNARY FANS	BEACH BAR DEPOSITS	
			OLD ALLUVIUM		

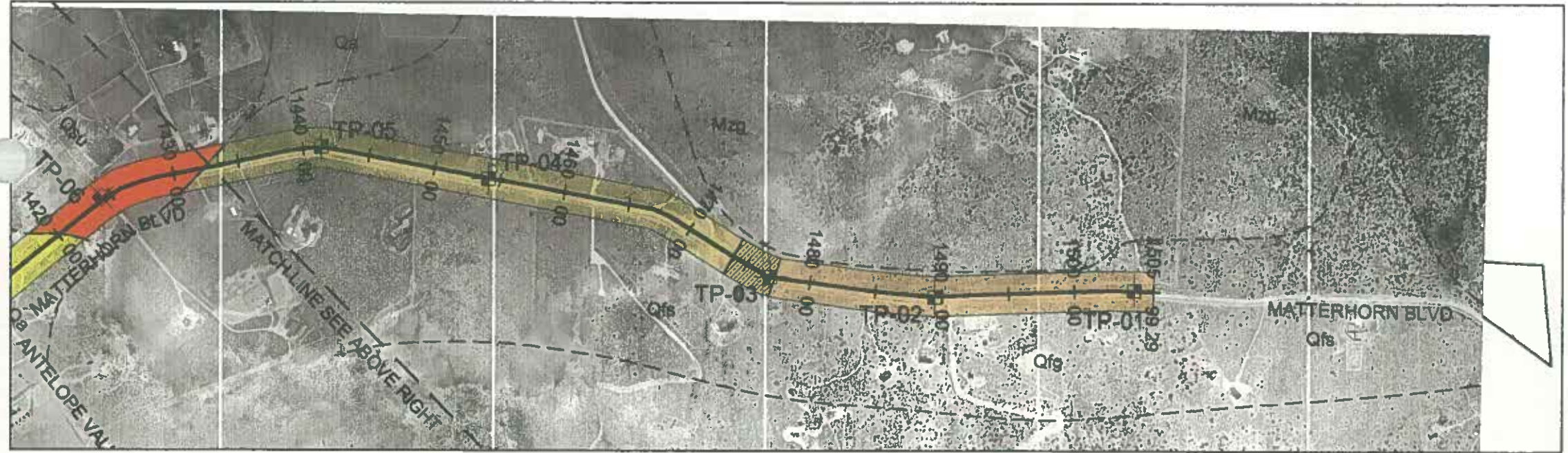
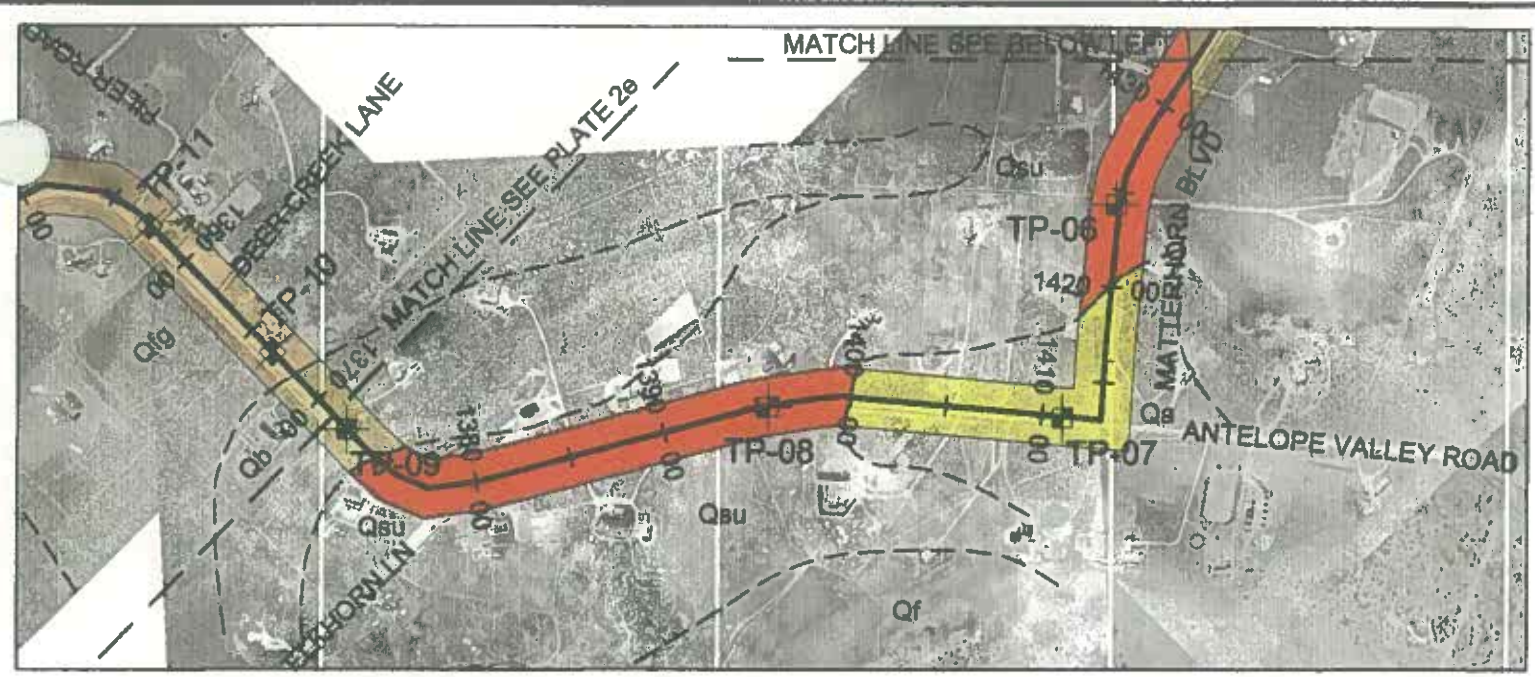


2e PLATE NO.	PROJECT NO. 67055025
	CAD DWG FILE: fishsprings_plt1a-21
	DRAWN BY: JKP
	CHECKED BY:
	DESIGNED BY:
COPYRIGHT:	

MAIN TRANSMISSION LINE ALIGNMENT GEOTECHNICAL ALIGNMENT MAPS
FISH SPRINGS WATER SUPPLY PROJECT
ECO:LOGIC ENGINEERING, LLC
 HONEY LAKE VALLEY TO LEMMON VALLEY, WASHOE COUNTY, NEVADA

REVISIONS	 Consulting Engineers & Scientists 1360 Greg Street, Suite 111-112 Sparks, Nevada 89431 Phone: (775) 351-2400 Fax: (775) 351-2423

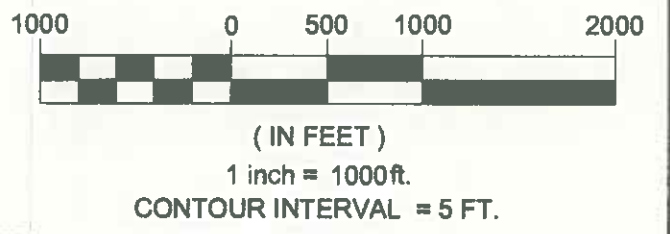
P:\Terracon\6705025 Fish Springs Water Supply\FISH_SPRINGS_PLT1a-2f.dwg, 6/7/2006 12:52:56 PM, HP DeskJet 1220C.pc3



LEGEND		ESTIMATED DEPTH TO BEDROCK (BELOW EXISTING GROUND SURFACE)	
TP-01	APPROXIMATE TEST PIT LOCATION	[White box]	> 8 FEET
B-01	APPROXIMATE BORING LOCATION	[Hatched box]	2 FEET TO 8 FEET
		[Dotted box]	< 2 FEET

[Yellow box] Qa	QUATERNARY ALLUVIUM	[Light brown box] Qfg	QUATERNARY FAN GRAVELS	[Purple box] Tv	TERTIARY VOLCANICS
[Light yellow box] Qt	QUATERNARY TUFA	[Yellow box] Qf	QUATERNARY FANS	[Green box] Mzg	MESOZOIC GRANITIC ROCKS
[Red box] Qsu	QUATERNARY SANDS - UNDIFFERENTIATED PLAYA DEPOSITS	[Light tan box] Qb	BEACH BAR DEPOSITS		
[White box] Qp		[Light grey box] Qoa	OLD ALLUVIUM		

NOTES
1. BASE MAP PROVIDED BY ECO:LOGIC ENGINEERING, LLC OF RENO, NEVADA.

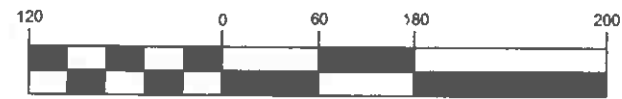
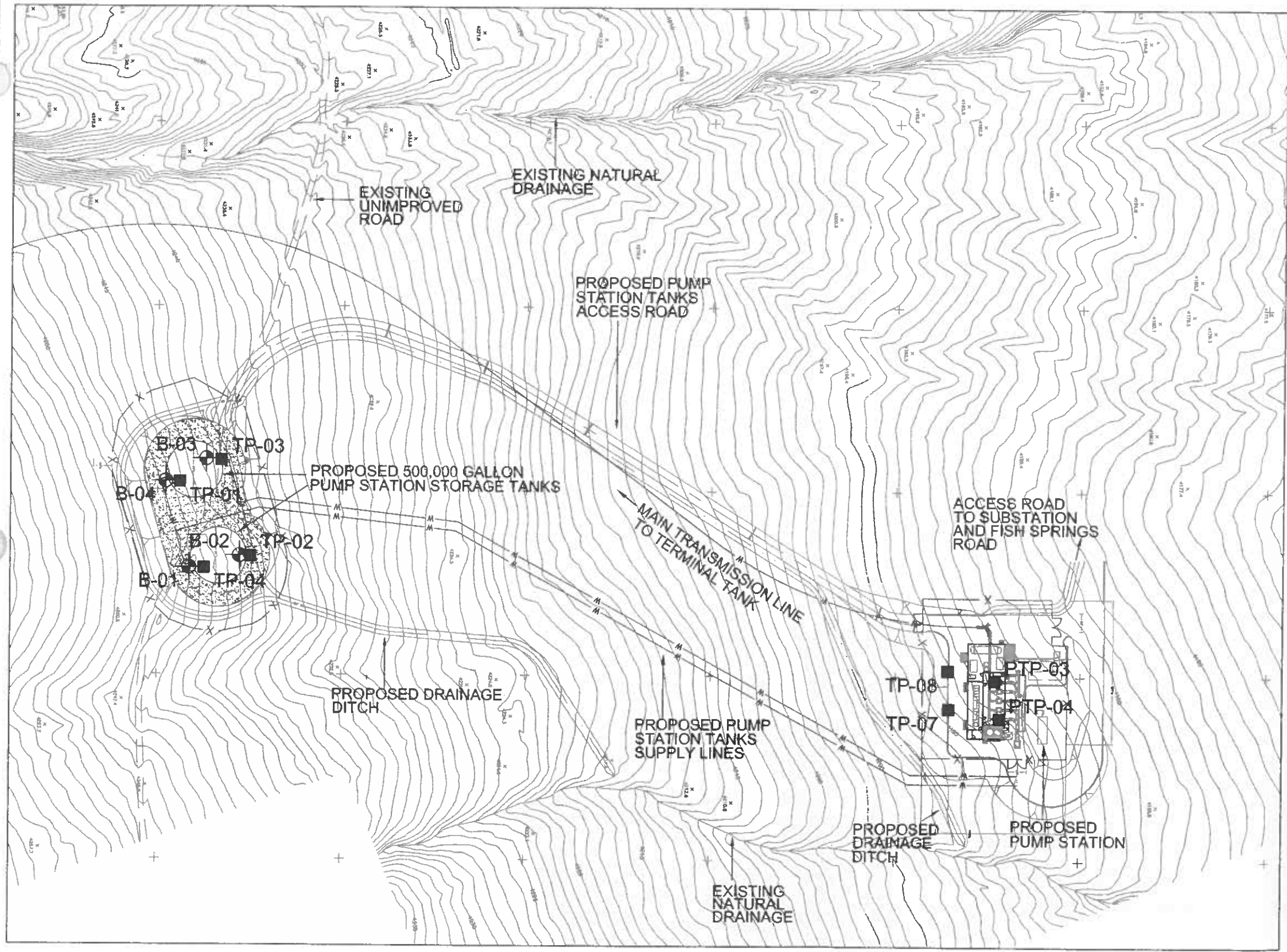


2f PLATE NO.	PROJECT NO. 67055025
	CAD DWG FILE: fishsprings_plt1a-2f
	DRAWN BY: JKP
	CHECKED BY:
	DESIGNED BY:
COPYRIGHT:	

MAIN TRANSMISSION LINE ALIGNMENT GEOTECHNICAL ALIGNMENT MAPS
FISH SPRINGS WATER SUPPLY PROJECT
ECO:LOGIC ENGINEERING, LLC
 HONEY LAKE VALLEY TO LEMMON VALLEY, WASHOE COUNTY, NEVADA

REVISIONS

Terracon
 Consulting Engineers & Scientists
 1360 Greg Street, Suite 111-112
 Sparks, Nevada 89431
 Phone: (775) 351-2400 Fax: (775) 351-2423



(IN FEET)
1 Inch = 120ft.

LEGEND

- TP-01 ■ APPROXIMATE TEST PIT LOCATION
- B-01 ⊕ APPROXIMATE BORING LOCATION

NOTES

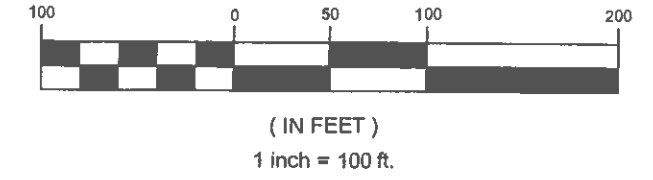
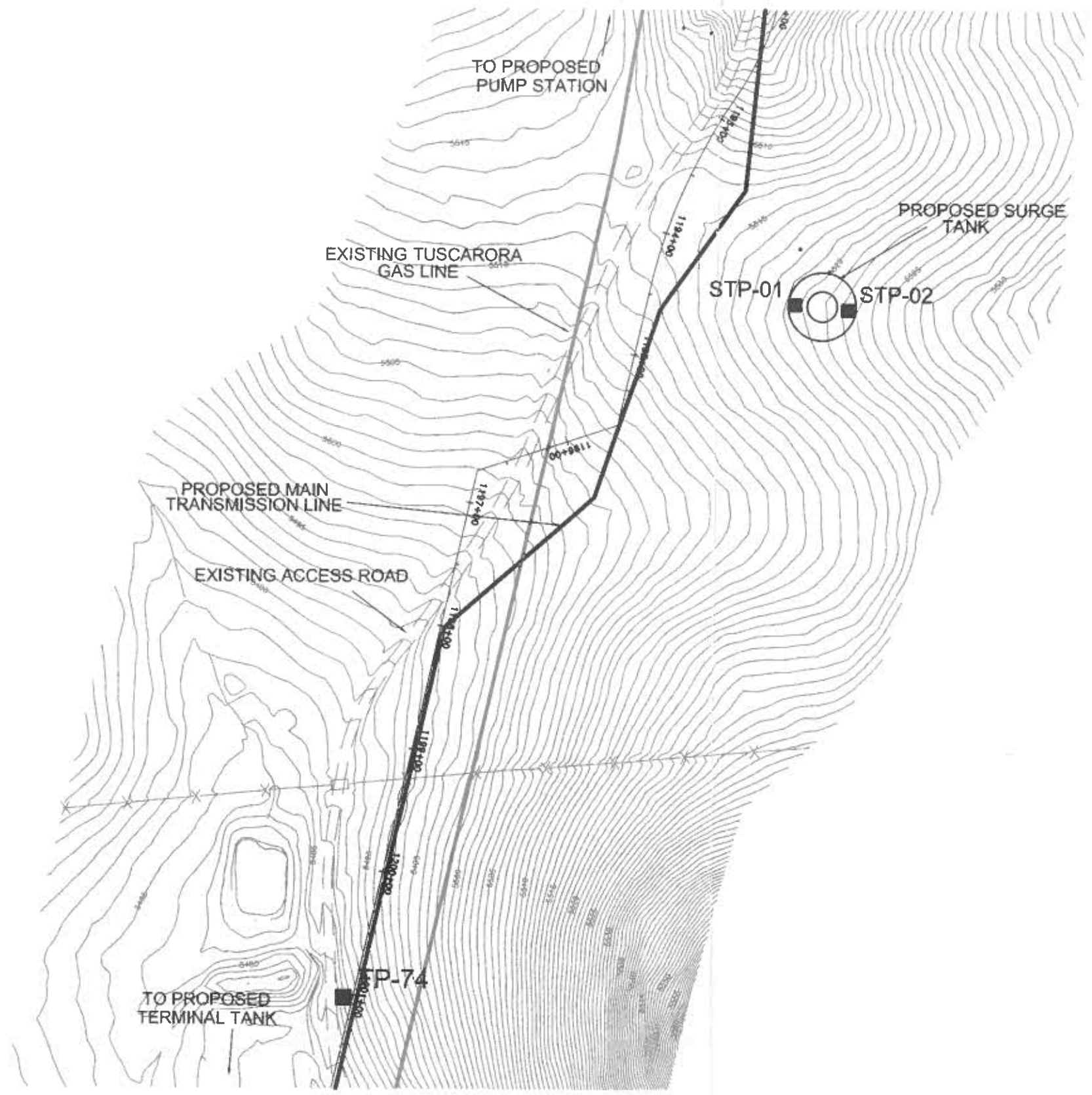
BASE MAP PROVIDED BY
ECO:LOGIC ENGINEERING, LLC
RENO, NEVADA

3 PLATE NO.	PROJECT NO. 67055025
	CAD DWG FILE:
	DRAWN BY:
	CHECKED BY:
	DESIGNED BY:
COPYRIGHT:	

PUMP STATION AND PUMP STATION TANKS LOCATION MAP
FISH SPRINGS WATER SUPPLY PROJECT
ECO:LOGIC ENGINEERING, LLC.
HONEY LAKE VALLEY TO LEMMON VALLEY, WASHOE COUNTY, NEVADA

REVISIONS

Terracon
Consulting Engineers & Scientists
1360 Greg Street, Suite 111-112
Sparks, Nevada 89431
Phone: (775) 351-2400 Fax: (775) 351-2423



LEGEND

- APPROXIMATE SURGE TANK TEST PIT LOCATION
- STP-01
- APPROXIMATE MAIN TRANSMISSION LINE TEST PIT LOCATION
- TP-01

NOTES

1. BASE MAP PROVIDED BY ECO:LOGIC ENGINEERING, LLC OF RENO, NEVADA

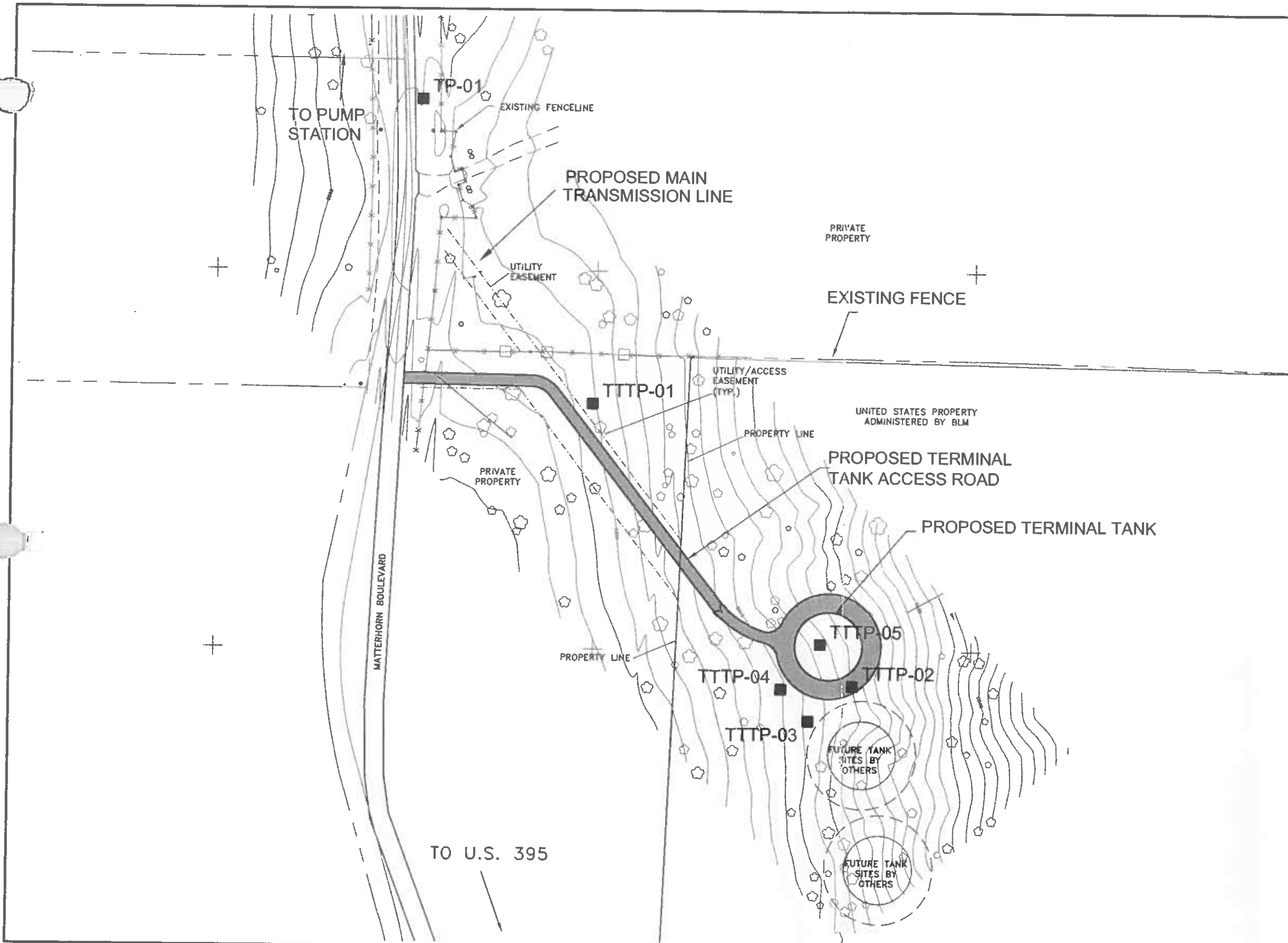
4 PLATE NO.	PROJECT NO. 67055025
	CAD DWG FILE:
	DRAWN BY:
	CHECKED BY:
	DESIGNED BY:
COPYRIGHT:	

SURGE TANK LOCATION MAP
FISH SPRINGS WATER SUPPLY PROJECT
ECO:LOGIC ENGINEERING, LLC.
 HONEY LAKE VALLEY TO LEMMON VALLEY, WASHOE COUNTY, NEVADA

REVISIONS

Terracon
 Consulting Engineers & Scientists
 1360 Greg Street, Suite 111-112
 Sparks, Nevada 89431
 Phone: (775) 351-2400 Fax: (775) 351-2423

P:\Terracon\67055025 Fish Springs Water Supply\septic\FS-WATER-SUPPLY_PLT5 - REV060206.dwg - 6/2/2006 3:27:16 PM, Adobe PDF.pc3



(IN FEET)
1 inch = 140 ft.

LEGEND

- APPROXIMATE TERMINAL TANK TEST PIT LOCATION
- APPROXIMATE MAIN TRANSMISSION LINE TEST PIT LOCATION

NOTES

BASE MAP PROVIDED BY
ECO:LOGIC ENGINEERING, LLC OF
RENO, NEVADA

5 PLATE NO.	PROJECT NO. 67055025
	CAD DWG FILE:
	DRAWN BY:
	CHECKED BY:
	DESIGNED BY:
	COPYRIGHT:

TERMINAL TANK LOCATION MAP
FISH SPRINGS WATER SUPPLY PROJECT
ECO:LOGIC ENGINEERING, LLC.
 HONEY LAKE VALLEY TO LEMMON VALLEY, WASHOE COUNTY, NEVADA

REVISIONS

Terracon
 Consulting Engineers & Scientists
 1360 Greg Street, Suite 111-112
 Sparks, Nevada 89431
 Phone: (775) 351-2400 Fax: (775) 351-2423