

Addendum No. 3
TMWA OPERATIONS CENTER EXPANSION
PWP Bid No.: WA-2017-201
TMWA Capital Project No.: 12-0009
July 14, 2017

The following information, clarifications, changes and modifications are by reference incorporated into the bid documents for the above referenced project. Any work item or contract provision not changed or modified will remain in full force and effect. The bid date and time and construction schedule remain the same.

CLARIFICATION, QUESTIONS AND RESPONSES

CLARIFICATION

Clarification Item No. 1: Addendum No. 2, Question No. 5 refers to the roller shade revised specification 12 49 40, which was inadvertently omitted from Addendum No. 2, and has been included as Attachment "A" hereto.

Clarification Item No. 2: Provide fiberglass batt insulation to fill all of the cavities between the existing wood T.J.I. composite joists at the roof above the server room. Accomplish this work prior to covering joists with fire coverings. Fire Protection Specifications and Floor Plans Sheet FP002 revision(s) has been attached hereto and is referred to as Attachment "B."

QUESTIONS AND RESPONSES

Question No. 1: Room 129 Not on Finish Schedule - Does this office receive any new flooring or base (10.6 x 17)?

Response to Question No. 1: Room 129 is an existing office, and has no flooring or finish work in it.

Question No. 2: What existing material is in 132 plotter storage area?

Response to Question No. 2: The existing flooring in this area is carpet tile.

Question No. 3: Any flooring for 186 electrical (10 x 21)?

Response to Question No. 3: None. This is an existing room, with a exposed concrete floor.

Question No. 4: Demo Sheet Note 17: Peel back existing carpet for saw cutting & core drilling of concrete slab, protect (e) carpet from damage. Reinstall (e) carpet to its original condition.

****If this is not carpet tile, this will not work - how much of an area to be done?**) ****

Nothing on the finish schedule for this.

Response to Question No. 4: There are areas where the new work cutting an opening into an existing space. There will be some work done at the floor level. The flooring in these areas is currently carpet tile. The Contractor should plan on removing existing carpet tile as necessary to complete the work, and then reinstalling the carpet tile to provide a finished project. The new tile matches the existing. The contractor should anticipate some carpet tile damage and waste in these areas when preparing the flooring bid.

Question No. 5: Would you please let me know if you require “Employment Practice Liability Insurance” for this project?

Response to Question No. 5: Employment Practice Liability coverage will *not* be required for this project.

Question No. 6: Please clarify in the General Conditions 00700; 10.02 Paragraph D, does this mean that the contractor is to pay for the Special Inspector or that the contractor is responsible for providing the material and facilities needed for the Special Inspector? Simply put, is the Special Inspector Hired by the Prime Contractor or by the Owner.

Response to Question No. 6: TMWA will hire the materials testing and special inspection company. The contractor is responsible for coordinating the inspections and cooperating with the inspector to make sure the site is safe and the work to be inspected is accessible, which in doing so, could require contractor labor and/or material.

QUESTION CUT-OFF DATE: JULY 14, 2017

END OF ADDENDUM NO. 3

Attachment A
Specifications 12 49 40

SECTION 12 49 40 - ROLLER SHADES

PART 1 - GENERAL

1.1 RELATED DOCUMENTS

- A. Drawings and general provisions of the Contract, including General and Supplementary Conditions and Division 1 Specification Sections, apply to this Section.

1.2 SUMMARY

- A. This Section includes roller shades.
- B. Related Sections include the following:
 - 1. Division 6 Section "Rough Carpentry" for wood blocking and grounds for mounting roller shades and accessories.

1.3 SUBMITTALS

- A. Product Data: For each type of product indicated. Include styles, material descriptions, construction details, dimensions of individual components and profiles, features, finishes, and operating instructions.
- B. Shop Drawings: Show location and extent of roller shades. Include elevations, sections, details, and dimensions not shown in Product Data. Show installation details, mountings, attachments to other work, operational clearances, and relationship to adjoining work.
- C. Samples for Initial Selection: For each colored component of each type of shade indicated.
 - 1. Include similar Samples of accessories involving color selection.
- D. Samples for Verification:
 - 1. Complete, full-size operating unit not less than 16 inches wide for each type of roller shade indicated.
 - 2. For the following products:
 - a. Shade Material: Not less than 3 inches square, with specified treatments applied. Mark face of material.
- E. Window Treatment Schedule: For roller shades. Use same designations indicated on Drawings.
- F. Maintenance Data: For roller shades to include in maintenance manuals. Include the following:
 - 1. Methods for maintaining roller shades and finishes.
 - 2. Precautions about cleaning materials and methods that could be detrimental to fabrics, finishes, and performance.
 - 3. Operating hardware.

1.4 QUALITY ASSURANCE

- A. Installer Qualifications: Fabricator of products.

- B. Source Limitations: Obtain roller shades through one source from a single manufacturer.
- C. Fire-Test-Response Characteristics: Provide roller shade band materials with the fire-test-response characteristics indicated, as determined by testing identical products per test method indicated below by UL or another testing and inspecting agency acceptable to authorities having jurisdiction:
 - 1. Flame-Resistance Ratings: Passes NFPA 701.
- D. Product Standard: Provide roller shades complying with WCMA A 100.1.

1.5 DELIVERY, STORAGE, AND HANDLING

- A. Deliver shades in factory packages, marked with manufacturer and product name, fire-test-response characteristics, lead-free designation, and location of installation using same designations indicated on Drawings and in a window treatment schedule.

1.6 PROJECT CONDITIONS

- A. Environmental Limitations: Do not install roller shades until construction and wet and dirty finish work in spaces, including painting, is complete and ambient temperature and humidity conditions are maintained at the levels indicated for Project when occupied for its intended use.
- B. Field Measurements: Where roller shades are indicated to fit to other construction, verify dimensions of other construction by field measurements before fabrication and indicate measurements on Shop Drawings. Allow clearances for operable glazed units' operation hardware throughout the entire operating range. Notify Architect of discrepancies. Coordinate fabrication schedule with construction progress to avoid delaying the Work.

PART 2 - PRODUCTS

2.1 ROLLER SHADES

- A. Products: Subject to compliance with requirements, provide one of the following:
 - 1. Castec, Inc.
 - a. Basis of Design: "Rollstar 200 Series."
 - 2. Draper Inc.
 - 3. Hunter Douglas, Inc.; Hunter Douglas Window Fashions Division.
 - 4. Levolor; Levolor-Kirsch Window Fashions; a Newell Rubbermaid Company.
 - 5. MechoShade Systems, Inc..
- B. Shade Band Material: PVC-coated polyester blend.
 - 1. Fabric Width: As indicated on Drawings.
 - 2. Pattern:
 - a. Conference Room 106 shall have "Hexcel 1260, OF 0%" blackout fabric.
 - b. All other windows to receive window coverings shall have "Sheerweave 4100, OF 10%" shading fabric.
 - 3. Colors: As selected by Architect from manufacturer's full range
 - 4. Material Solar-Optical Properties: As Noted.
 - 5. Bottom Hem: Straight.
 - 6. Trim: As indicated by manufacturer's designation for style and color.
 - 7. Fringe: As indicated by manufacturer's designation for style and color.

- C. Rollers: Electrogalvanized or epoxy primed steel or extruded-aluminum tube of diameter and wall thickness required to support and fit internal components of operating system and the weight and width of shade band material without sagging; designed to be easily removable from support brackets; with manufacturer's standard method for attaching shade material. Provide capacity for one two Insert number roller shade band(s) per roller, unless otherwise indicated.
- D. Direction of Roll: Regular, from back of roller.
- E. Mounting Brackets: Galvanized or zinc-plated steel.
- F. Bottom Bar: Steel or extruded aluminum. Provide exposed-to-view, external-type bottom bar with concealed weight bar as required for smooth, properly balanced shade operation.
- G. Mounting: Inside mounting permitting easy removal and replacement without damaging roller shade or adjacent surfaces and finishes.
- H. Side Channels: Manufacturer's standard for fixing shade in place, keeping shade band material taut, and reducing light gaps when shades are closed.
 - 1. Side channels are only required at blackout fabric.
- I. Shade Operation: Manual; with continuous-loop bead-chain, clutch, and cord tensioner and bracket lift operator.
 - 1. Position of Clutch Operator: Left side of roller, as determined by hand of user facing shade from inside, unless otherwise indicated on Drawings.
 - 2. Clutch: Capacity to lift size and weight of shade; sized to fit roller or provide adaptor.
 - 3. Lift-Assist Mechanism: Manufacturer's standard spring assist for balancing roller shade weight and lifting heavy roller shades.
 - 4. Loop Length: Length required to make operation convenient from floor level.
 - 5. Bead Chain: Nickel-plated metal.
 - 6. Cord Tensioner Mounting: Wall.
 - 7. Operating Function: Stop and hold shade at any position in ascending or descending travel.

- J. Locations: Roller Shades are to be installed at all exterior windows.

Addendum#2

2.2 ROLLER SHADE FABRICATION

- A. Product Description: Roller shade consisting of a roller, a means of supporting the roller, a flexible sheet or band of material carried by the roller, a means of attaching the material to the roller, a bottom bar, and an operating mechanism that lifts and lowers the shade.
- B. Concealed Components: Noncorrodible or corrosion-resistant-coated materials.
 - 1. Lifting Mechanism: With permanently lubricated moving parts.
- C. Unit Sizes: Obtain units fabricated in sizes to fill window and other openings as follows, measured at 74 deg F:
 - 1. Shade Units Installed between (Inside) Jambs: Edge of shade not more than 1/4 inch from face of jamb. Length equal to head to sill dimension of opening in which each shade is installed.
- D. Installation Fasteners: No fewer than two fasteners per bracket, fabricated from metal noncorrosive to shade hardware and adjoining construction; type designed for securing to supporting substrate; and supporting shades and accessories under conditions of normal use.

- E. Color-Coated Finish: For metal components exposed to view, apply manufacturer's standard baked finish complying with manufacturer's written instructions for surface preparation including pretreatment, application, baking, and minimum dry film thickness.
- F. Colors of Metal and Plastic Components Exposed to View: Matching or coordinating with shade band color, unless otherwise indicated.

PART 3 - EXECUTION

3.1 EXAMINATION

- A. Examine substrates, areas, and conditions, with Installer present, for compliance with requirements for installation tolerances, operational clearances, and other conditions affecting performance.
 - 1. Proceed with installation only after unsatisfactory conditions have been corrected.

3.2 ROLLER SHADE INSTALLATION

- A. Install roller shades level, plumb, and aligned with adjacent units according to manufacturer's written instructions, and located so shade band is not closer than 1 inch to interior face of glass. Allow clearances for window operation hardware.

3.3 ADJUSTING

- A. Adjust and balance roller shades to operate smoothly, easily, safely, and free from binding or malfunction throughout entire operational range.

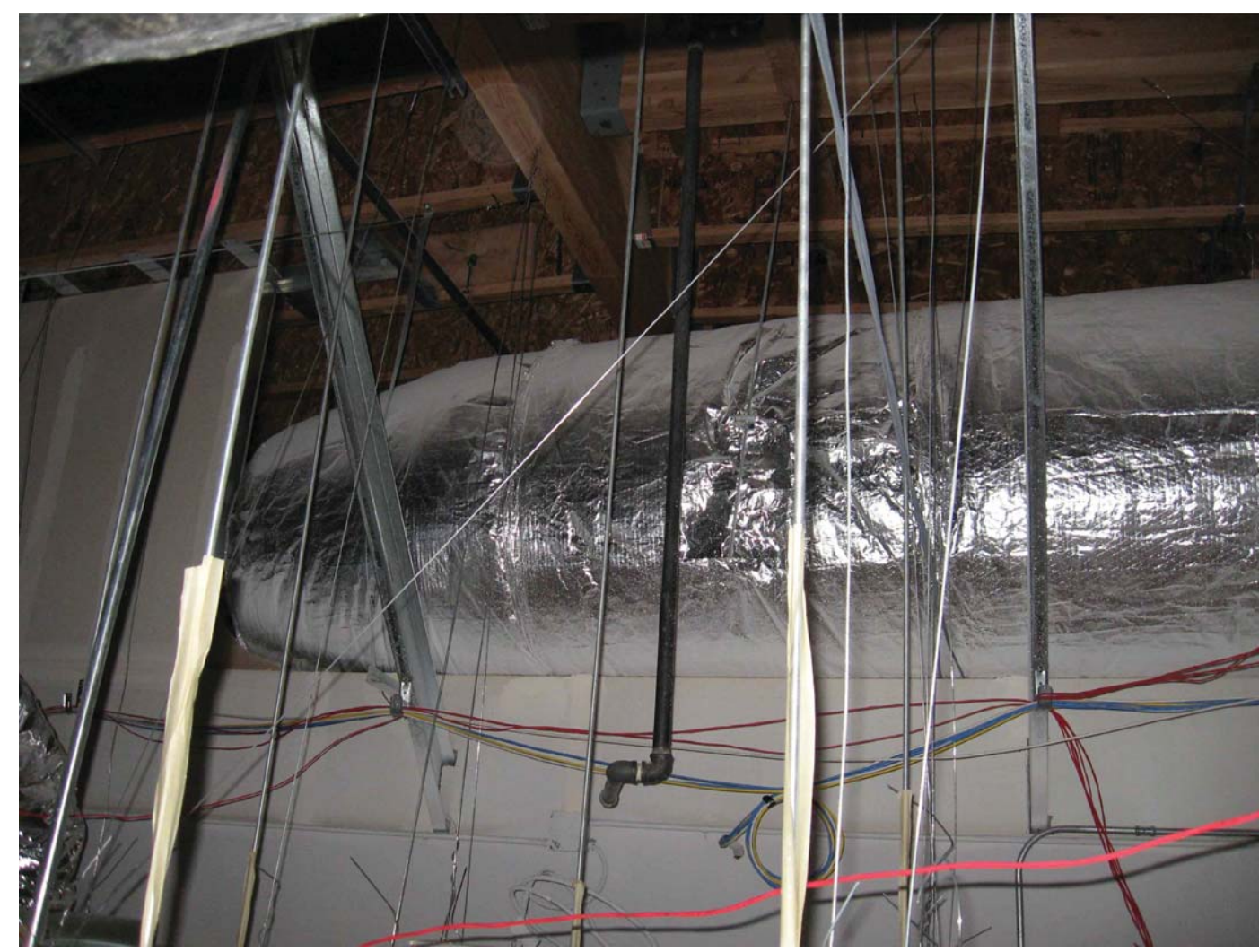
3.4 CLEANING AND PROTECTION

- A. Clean roller shade surfaces after installation, according to manufacturer's written instructions.
- B. Provide final protection and maintain conditions, in a manner acceptable to manufacturer and Installer, that ensure that roller shades are without damage or deterioration at time of Substantial Completion.
- C. Replace damaged roller shades that cannot be repaired, in a manner approved by Architect, before time of Substantial Completion.

END OF SECTION 12494

ATTACHMENT “B”

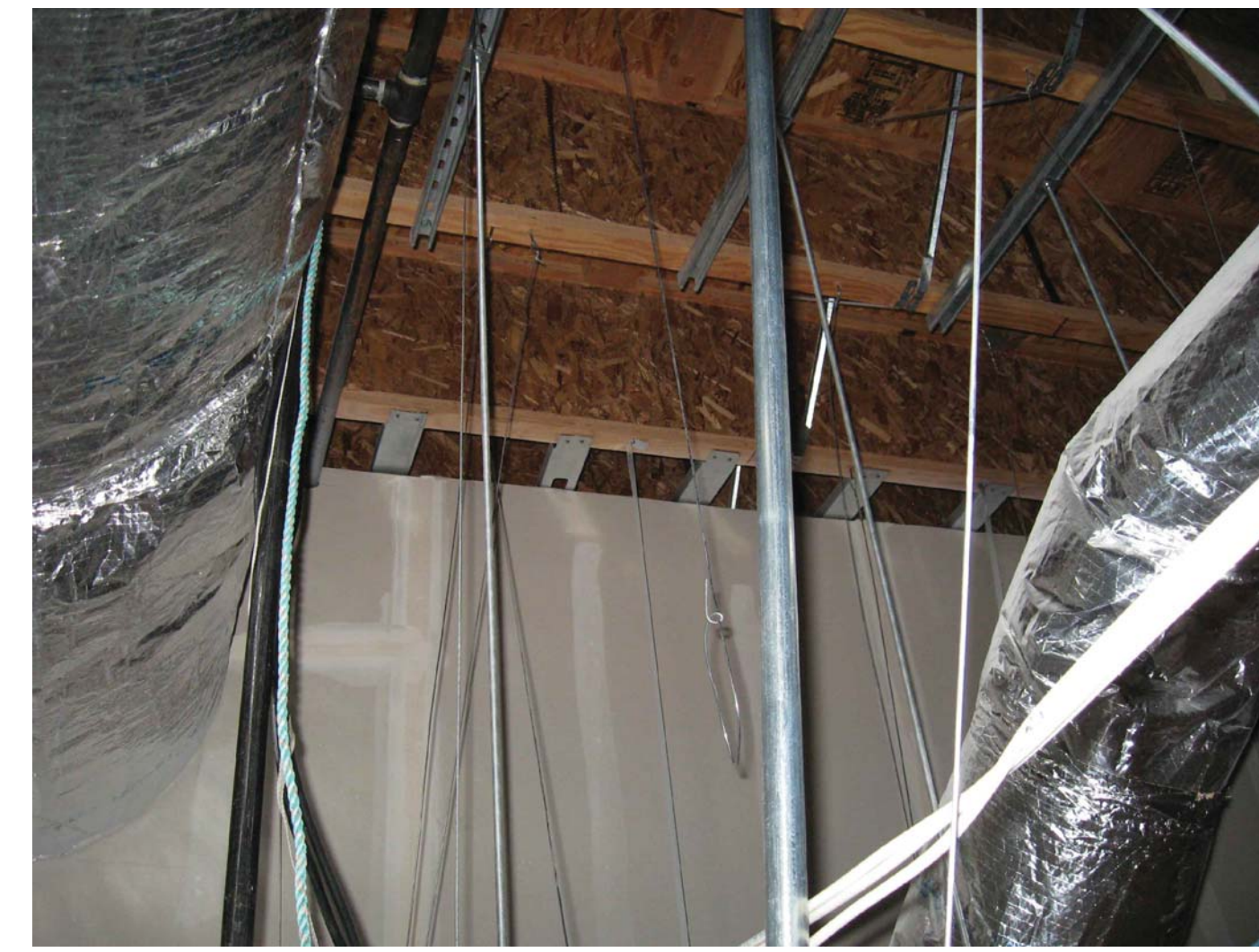
Fire Protection Specifications and Floor Plans Sheet FP002



1- PHOTO OF WALL SECTION AT DUCT



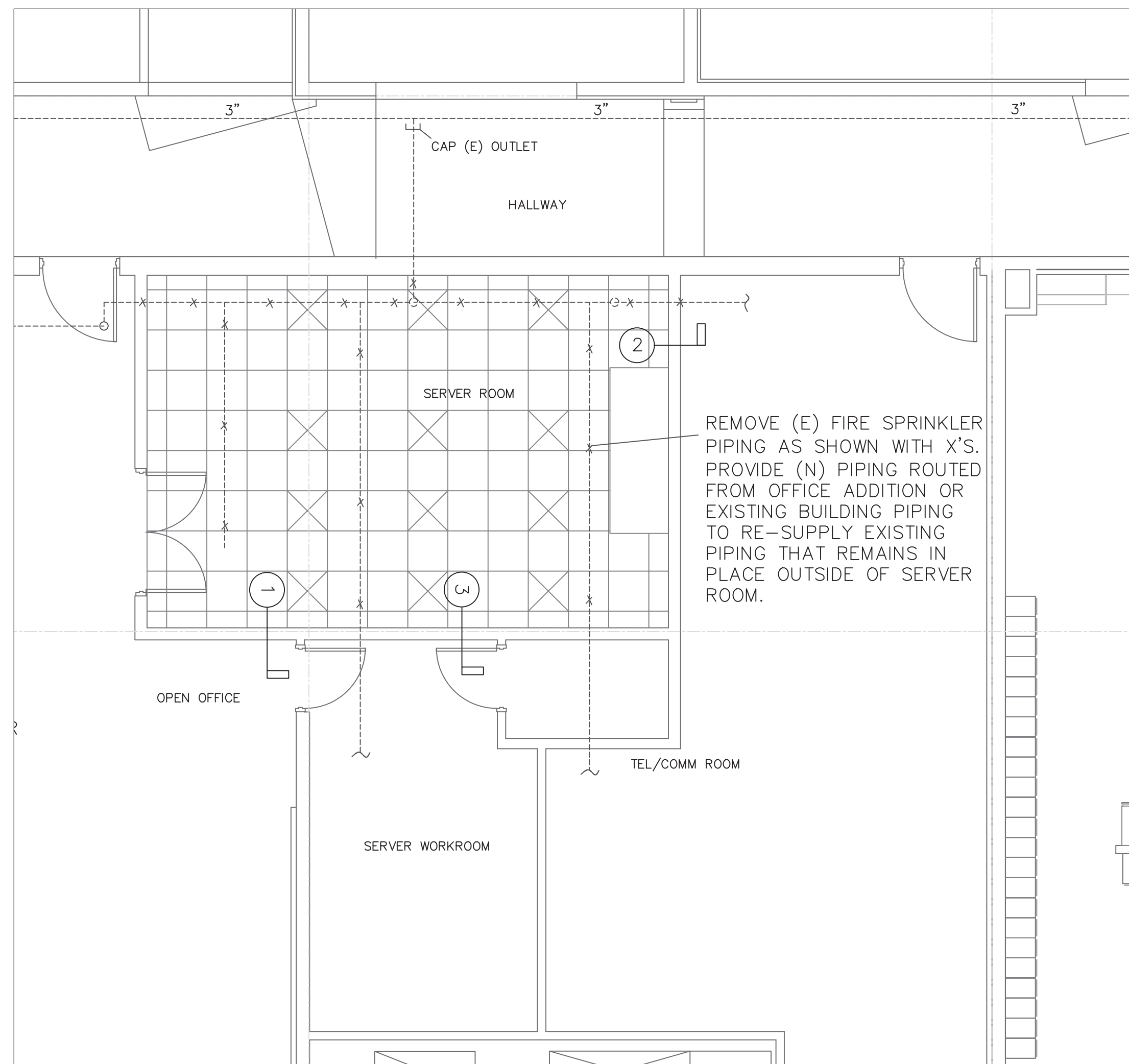
2- PHOTO OF WALL SECTION AT DUCT



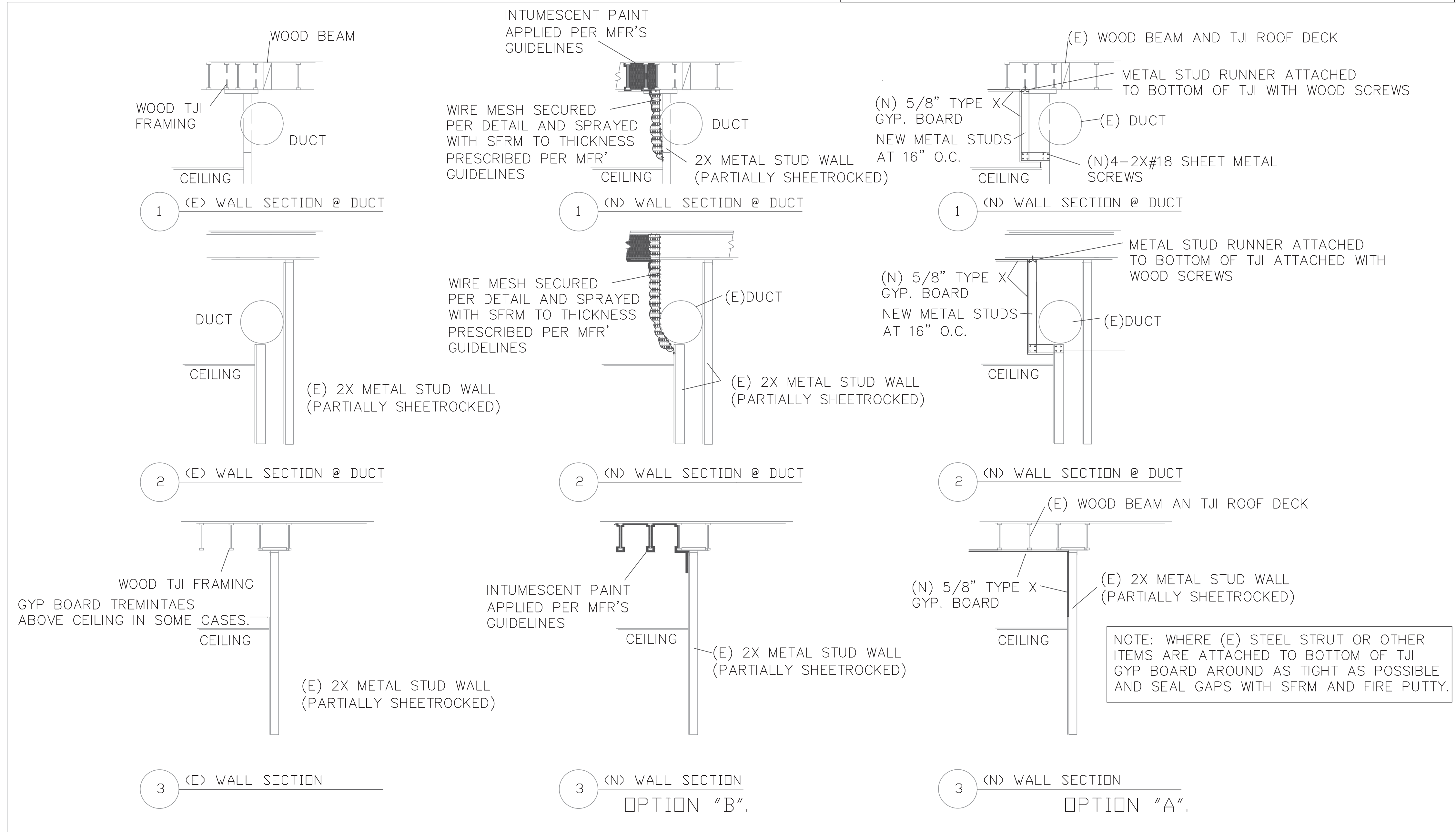
3- PHOTO OF WALL SECTION

GENERAL NOTES

- THIS IS A PERFORMANCE SPECIFICATION AND THE CONTRACTOR SHALL BE RESPONSIBLE FOR PROVIDING ALL PERMITS, FEES, DEMOLITION, STORAGE, REMOVAL, REPAIR AND CLEANUP. SCOPE OF WORK INCLUDES:
 - PROVIDING AND INSTALLING TYPE X GYP. BOARD AT THE BOTTOM OF THE EXISTING TJI/BEAM ROOF STRUCTURE. PROVIDING AND INSTALLING METAL STUD FRAMING TO SUPPORT GYP BOARD WHERE REQUIRED AROUND DUCTS AND OTHER OBSTACLES. PROVIDE FIRESTOP ASSEMBLIES AT ALL WALL THROUGH-PENETRATION PER UL DESIGN. THE INTENT IS TO RENDER THE SPACE ABOVE THE CEILING TO BE A "NON-COMBUSTIBLE CONCEALED SPACE" PER THE NFPA 13 DEFINITION. OPTION A IS THE PREFERRED MEANS AND METHODS FOR THIS OBJECTIVE. OPTION B IS PROVIDED AS A POSSIBILITY BUT IS INTENDED TO BE USED WHERE IT IS UNREALISTIC TO BUILD FRAMING AROUND OBSTACLES.
 - REMOVE FIRE SPRINKLER PIPING, FITTINGS, HANGERS, RODS, AND SPRINKLER HEADS AND DISPOSE OF AWAY FROM PROPERTY. REPLACE EXISTING CEILING TILES THAT HAVE ESCUTCHEON HOLES WITH NEW SOLID TILE TO MATCH EXISTING CEILING.
- CONTRACTOR(S) SHALL HOLD A VALID NEVADA CONTRACTORS LICENSE FOR THE TYPE OF WORK BEING PERFORMED. REPAIR ANY DAMAGED SURFACES DUE RELATED TO THIS SCOPE OF WORK. CLEANUP AREA TO ORIGINAL PRE-JOB CONDITION.



1 SERVER ROOM INTERSTITIAL SPACE PLAN
FP002 3/16"=1'-0"



2 DETAILS
FP002

NO SCALE

4 FILL T.J.I. COMPOSITE WOOD JOIST CAVITIES WITH FIBERGLASS INSULATION AT ALL AREAS ABOVE SERVER ROOM.