



**Addendum No. 1**  
**CAMPELLO CAPACITY INCREASE – SPRING CREEK 6 BPS**  
PWP Bid No.: WA-2019-181  
TMWA Capital Project No.: 15-0056  
April 9, 2019

The following information, clarifications, changes and modifications are by reference incorporated into the bid documents for the above referenced project. Any work item or contract provision not changed or modified will remain in full force and effect. The bid date and time and construction schedule remain the same.

**QUESTIONS AND RESPONSES**

**Question No. 1:** Two questions have come in asking if the pump and motor assembly are to be included in the bid package.

**Response to Question No. 1:** The pump and motor assembly is not included in the contractor's bid package. TMWA is procuring these items as called out in Spec Section 01010 1.2 Work Covered by Contract Documents and Section 01025 5.1 Booster Pump Installation and Mechanical Piping Modifications. The pump and motor specs are solely for reference.

**CLARIFICATIONS**

**Clarification Item No. 1:** Project plans and specifications originally call out to remove and re-install the existing chlorine injection assembly. The plan will now remove and discard existing chlorine injector and install new injector per detail M112/TYP on sheet M001. Notes have been changed on sheets on M100 and M101.

**Clarification Item No. 2:** The total sheet count in the bottom right corner of the Cover Sheet was incorrect. There is a total of 17 sheets as shown in the sheet index.

# CAMPELLO CAPACITY INCREASE - SPRING CREEK 6 BPS

RENO

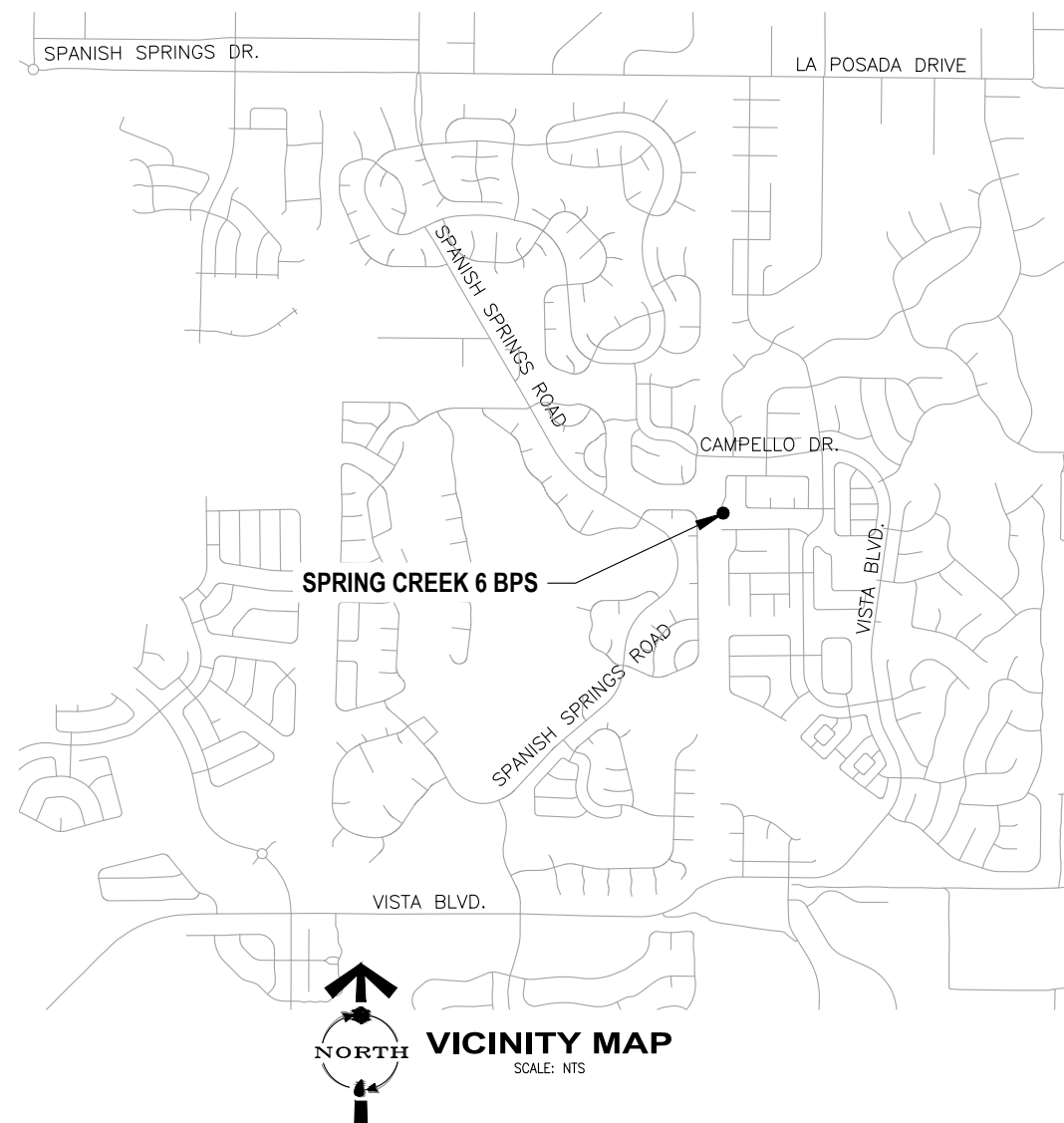
WASHOE COUNTY

NEVADA

TMWA PROJECT NO.: 15-0056

PWP #: WA-2019-181

SHEET INDEX		
SHT NO.	DWG NO.	DESCRIPTION
1	G000	COVER SHEET
2	G001	GENERAL NOTES
3	G002	LEGENDS, SYMBOLS, & ABBREVIATIONS
4	C001	TYPICAL TMWA DETAILS 1
5	C002	TYPICAL TMWA DETAILS 2
6	C003	TYPICAL TMWA DETAILS 3
7	C004	TYPICAL CIVIL DETAILS 1
8	C005	TYPICAL CIVIL DETAILS 2
9	C100	DEMOLITION PLAN & CIVIL SITE PLAN & PROFILE
10	M001	TYPICAL MECHANICAL DETAILS
11	M100	DEMOLITION & MECHANICAL PLAN
12	M101	MECHANICAL SECTIONS & DETAILS
13	M102	MECHANICAL SECTIONS & DETAILS
14	E001	ELECTRICAL NOTES & SYMBOLS
15	E101	ELECTRICAL PLANS
16	E601	SINGLE LINE
17	I100	P&ID



1355 CAPITAL BLVD. PO BOX 30013 RENO, NEVADA 89520-3013 PHONE: 775-834-8080

## TRUCKEE MEADOWS WATER AUTHORITY

**MARK FOREE**  
GENERAL MANAGER

**NOT REPRODUCIBLE**  
PROPERTY OF  
TRUCKEE MEADOWS WATER AUTHORITY  
RETURN UPON COMPLETION OF PROJECT  
(Per Homeland Security Act)

**PROJECT MANAGER / ENGINEER**

**JASON BARNES**  
Office Phone: 775-834-8286  
Cell Phone: 775-771-3588  
Fax: 775-834-8003

**PROJECT REPRESENTATIVE**

**JASON PHINNEY**  
Office Phone: 775-834-8022  
Cell Phone: 775-848-4134  
Fax: 775-834-8003

**BID SET**  
NOT FOR CONSTRUCTION  
MARCH 2019



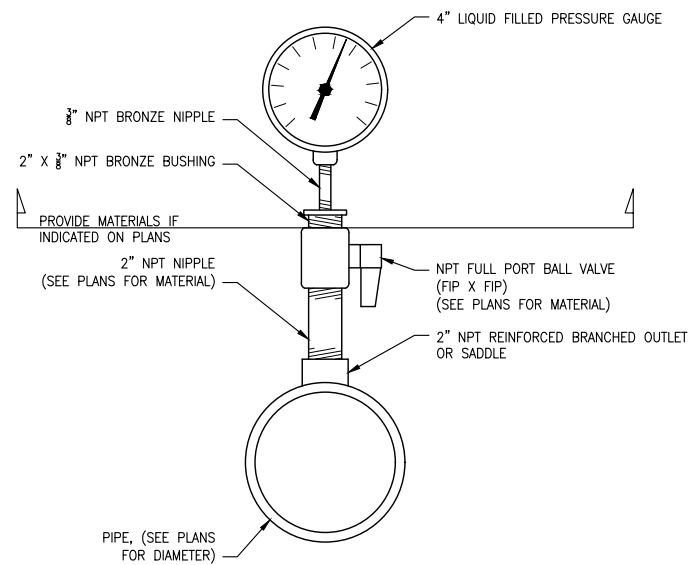
3/22/2019



Know what's below.  
Call before you dig.

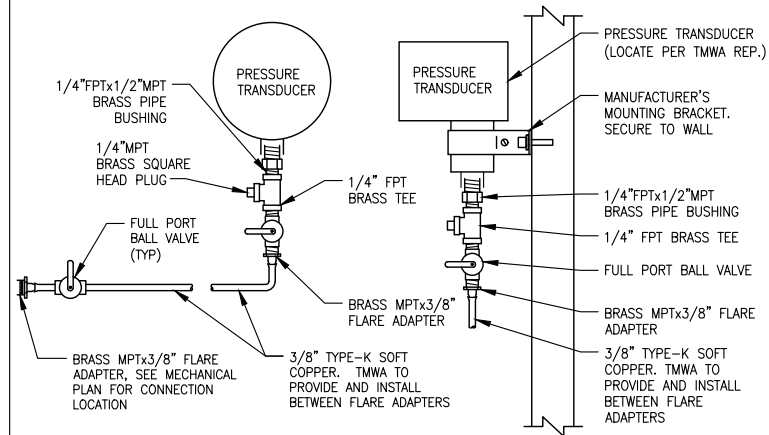
**G000**  
SHEET 1 OF 17

PROJECT #15-0056



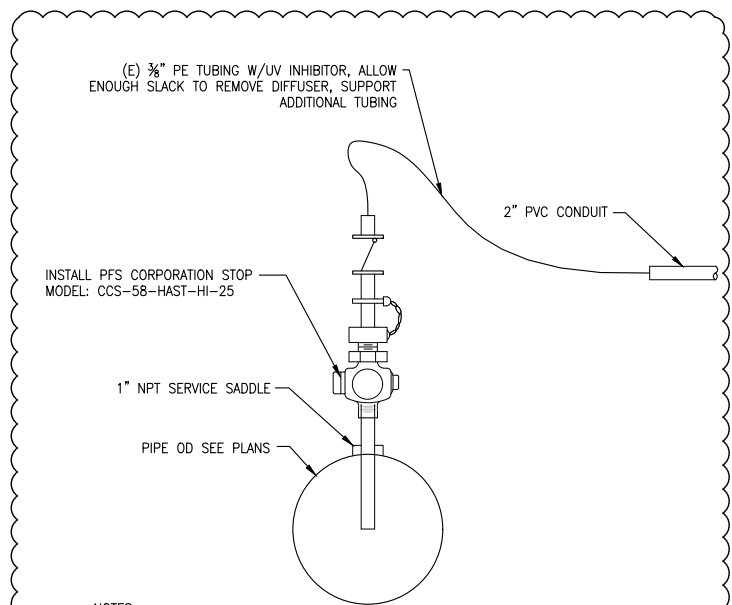
2-INCH OUTLETS

M105  
TYP



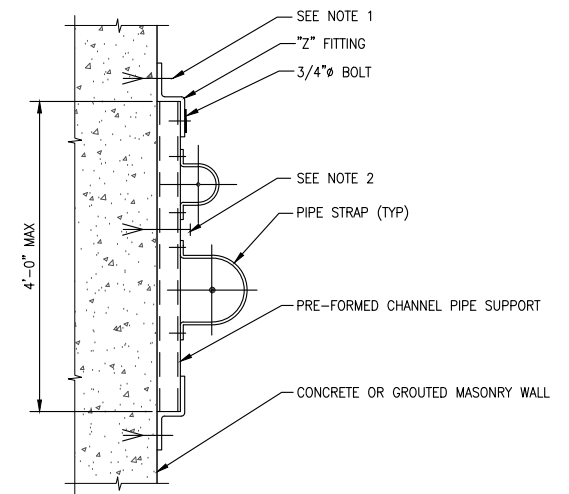
PRESSURE TRANSDUCER INSTALLATION DETAIL

M106  
TYP



CHLORINE INJECTION ASSEMBLY

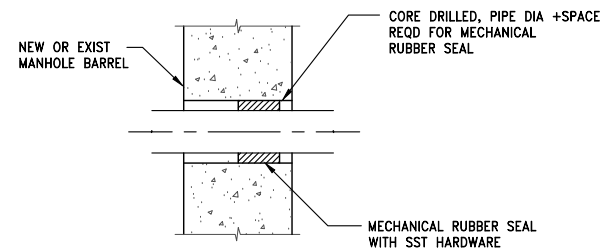
M112  
TYP



FLUSH MOUNT PIPE SUPPORT

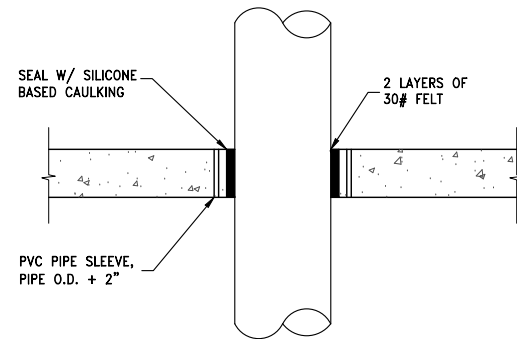
M440  
TYP

- 3/4"  $\phi$  CONCRETE ANCHORS IF MOUNTED ON WALL OR FLOOR. IF MOUNTED ON CEILING USE CONCRETE INSERTS OR ANCHOR BOLTS ONLY.
- FOR SUPPORT LENGTH GREATER THAN 2'-0" PROVIDE ADDITIONAL ANCHOR BOLT.
- MAXIMUM PIPE SIZE 4" $\phi$ .
- SPACE FLUSH MOUNT PIPE SUPPORTS AT 5'-0" MAXIMUM OR AS OTHERWISE INDICATED ON THE DRAWINGS.
- IF SUPPORT IS SUBMERGED OR LOCATED BELOW THE TOP OF WALL IN WATER BEARING STRUCTURE, ALL MATERIAL SHALL BE STAINLESS STEEL. IN ALL OTHER AREAS, MATERIALS SHALL BE HOT-DIP GALVANIZED STEEL UNLESS OTHERWISE INDICATED ON THE DRAWINGS.
- FIELD PAINT GALVANIZED STEEL PER THE SPECIFICATIONS.



PIPE PENETRATION - RUBBER SEAL

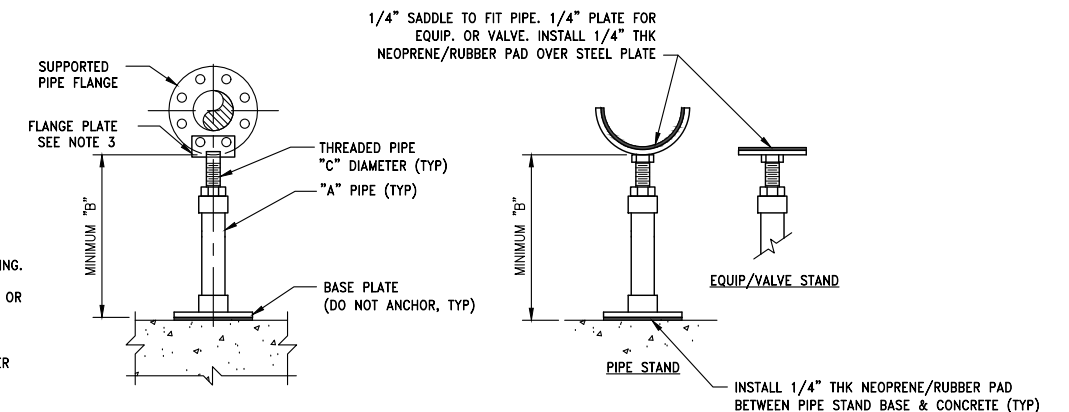
M302  
TYP



SLAB ON GRADE PIPE PENETRATION

M303  
TYP

SIZE OF SUPPORTED PIPE	EXTENSION PIPE SIZE "A" SCH 40	BASE PLATE SIZE	MINIMUM DIST. FROM FLANGE TO FLOOR "B"	THREADED PIPE "C" DIAMETER
2	2"	4"x 6"x 1/4"	7"	1"
2 1/2	2.5"	4"x 6"x 1/4"	7"	1.5"
3	2.5"	4"x 6"x 1/4"	7"	1.5"
4	3"	4"x 6"x 1/4"	7"	2.5"
6	3"	4"x 6"x 1/4"	7"	2.5"
8	3"	4"x 6"x 1/4"	7"	2.5"
10	3"	4"x 6"x 1/4"	7"	2.5"
12	3"	4"x 6"x 1/4"	7"	2.5"
14	4"	8"x 8"x 1/2"	9 1/2"	3"
16	4"	8"x 8"x 1/2"	9 1/2"	3"



ADJUSTABLE PIPE SUPPORT DETAIL

M500  
TYP

- NOTES:
- MATERIAL OF FABRICATION ASTM A35 & A53 STEEL WITH ELECTRO-GALVANIZED FINISH OR AS SPECIFIED ON THE DRAWING.
  - STANDON MODEL S89 FLANGE SUPPORT OR EQUAL. SUPPORT DOES NOT SERVE AS SEISMIC OR THRUST SUPPORT.
  - TWO BOLTS UP TO 10". 45" THEREAFTER

BID SET  
NOT FOR CONSTRUCTION  
MARCH 2019

K:\2018-19\_Capital Projects\15-0056 SC Well 6 BPS\Design\CAD\15-0056-M001.dwg  
Apr 02, 2019 12:57pm

REVISION	DESCRIPTION	BY	APP	DATE
ADDENDUM 1		JH	JB	4.8.19

WORK ORDER NO. 15-0056  
DESIGNED JPB  
DRAWN JPB  
DATE MARCH 2019  
CHECKED -  
SUBMITTED -  
RECOMMENDED -  
APPROVED -

**TRUCKEE MEADOWS WATER AUTHORITY**  
1355 CAPITAL BLVD. / PO BOX 30013  
RENO, NEVADA 89520-3013  
PH 775-834-8000 / FX 775-834-8003

NOT REPRODUCIBLE  
PROPERTY OF TRUCKEE MEADOWS WATER AUTHORITY, RETURN UPON COMPLETION OF PROJECT  
(Per Homeland Security Act)

**CAMPELLO CAPACITY INCREASE  
SPRING CREEK 6 BPS  
WASHOE COUNTY, NEVADA  
TYPICAL MECHANICAL DETAILS**

PROFESSIONAL ENGINEER - STATE OF NEVADA  
JASON P. JAMES  
EXP. 12/31/20  
CIVIL  
No. 01965

SHEET NUMBER

**M001**

10 OF 17

4/8/2019