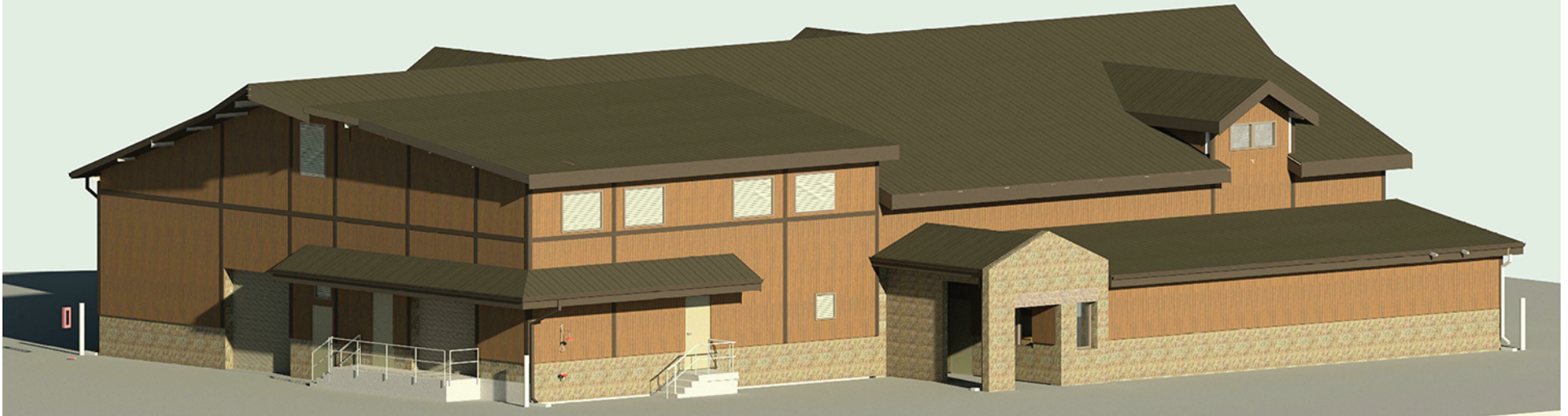
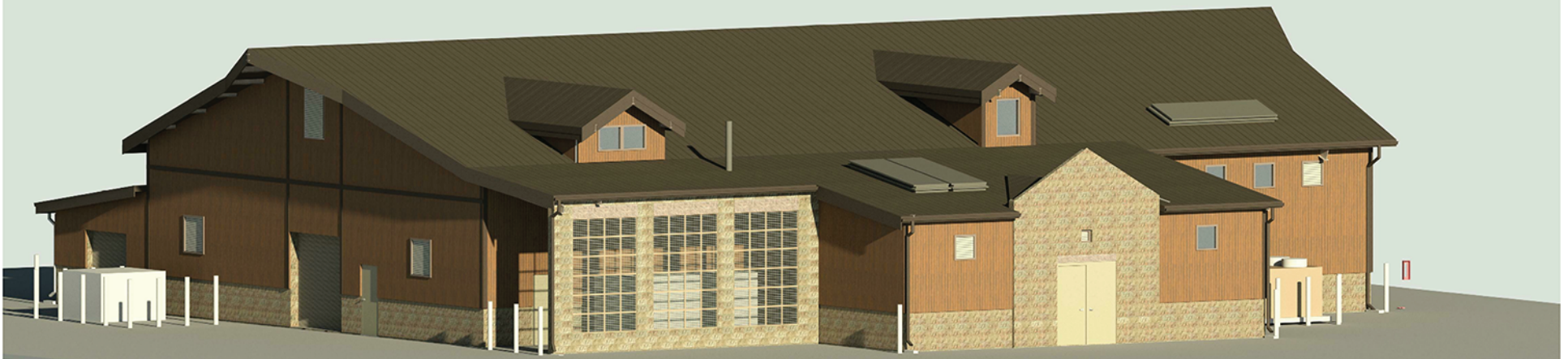


The Mt. Rose Water Treatment Plant as viewed from the direction of Callahan Rd.



The Mt. Rose Water Treatment Plant as viewed from the direction of Mountain Ranch Rd.



The Mount Rose Water Treatment Plant's architecture has been improved to incorporate natural colors, random CMU block and box rib steel siding. The building will also enclose the outdoor steel water tank and standby generator originally proposed. The exterior is dark skies compliant and incorporates stringent specifications to limit sound coming from the plant's pumping systems. When the water treatment plant is operational, only a portion of the flow from Whites Creek will be diverted. Downstream water rights and irrigation requirements will continue to be fulfilled, and when flow levels are low, no diversions will take place to maintain wildlife and habitat needs.