

# Winterizing Your Irrigation System

PRESENTATION BY:

SHANNON GIOLITO

WATER CONSERVATION  
COORDINATOR II



**Truckee Meadows  
Water Authority**

The objective of this workshop is to demonstrate how to properly inspect and safely turn off and drain an irrigation system for the winter.

## Frost

**Definition:** Frost occurs when the temperature drops to 32°F (0°C) or lower, causing moisture in the air to condense and freeze on surfaces.

**Conditions:** Frost can form even when air temperatures are above freezing, especially on clear nights when heat radiates away from the ground.

**Impact:** Light frost can damage sensitive plants, particularly flowers and young seedlings, but some plants may tolerate it.

## Freeze

**Definition:** A freeze occurs when air temperatures drop to 32°F (0°C) or lower for an extended period, resulting in the freezing of water in the environment.

**Conditions:** Freezes can vary in duration and intensity, and they can occur without frost if the conditions are right.

**Impact:** A freeze can cause more significant damage to plants than frost, especially if it lasts for several hours.

## Hard Freeze

**Definition:** A hard freeze is typically defined as temperatures dropping to 28°F (-2°C) or lower for several hours.

**Conditions:** This condition is more severe than a regular freeze and is often associated with longer-lasting cold spells.

**Impact:** A hard freeze can cause extensive damage to most plants, including perennials and woody plants, and is often lethal to sensitive vegetation.

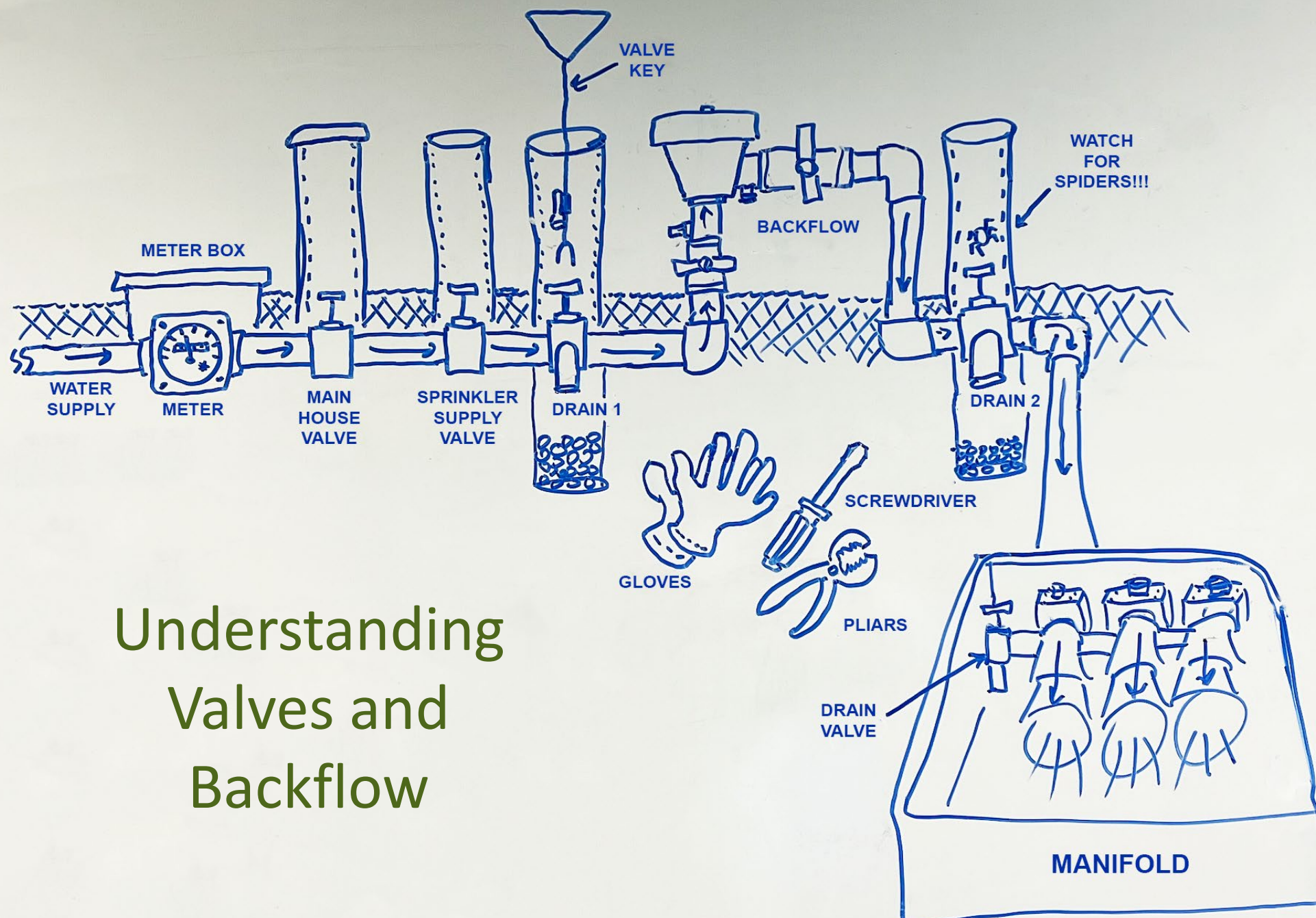


# Some Important notes before we begin

Four important things to locate:

- Backflow assembly
- Irrigation control valve box
- Vertical valve and drain sleeves
- Irrigation timer or clock





# Understanding Valves and Backflow

# Backflow Assembly



# Backflow Water Supply Valve



# Close Backflow Water supply Valve

Use a sprinkler key to turn the **water supply** valve all the way to the right in the closed position.



# Open all drains

Use a sprinkler key to turn the **drain** valve all the way to the left in the open position.



# Open all drains

Use a sprinkler key to turn the **drain** valve all the way to the left in the open position.



# Backflow Assembly

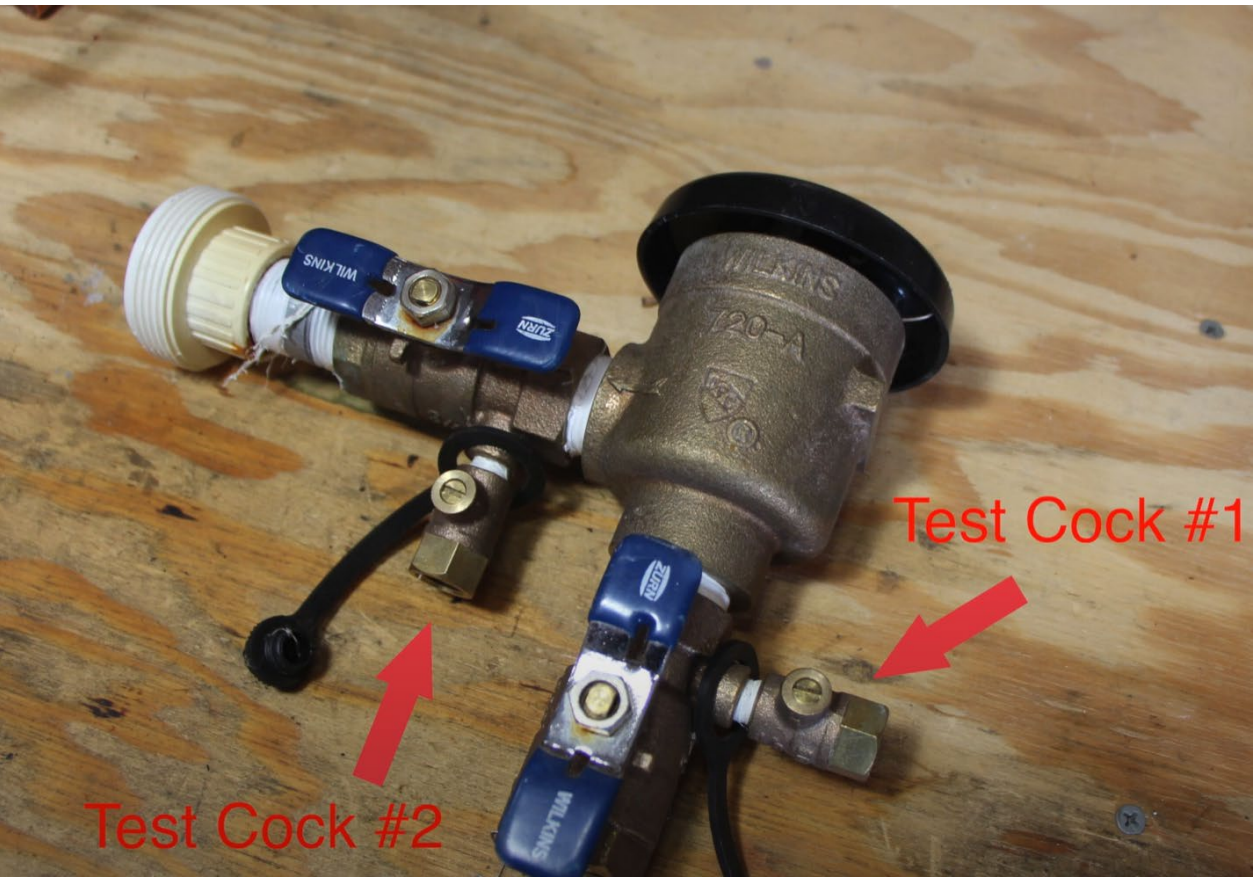
Turn both 'test cock' screws in the open position (1/4 turn) so that the water can drain out. After water stops draining, turn both test cock screws halfway back to the closed position.

Turn Shut off Valves #1 (top) & #2 (bottom) to the half open the half-closed position (45-degree angle).

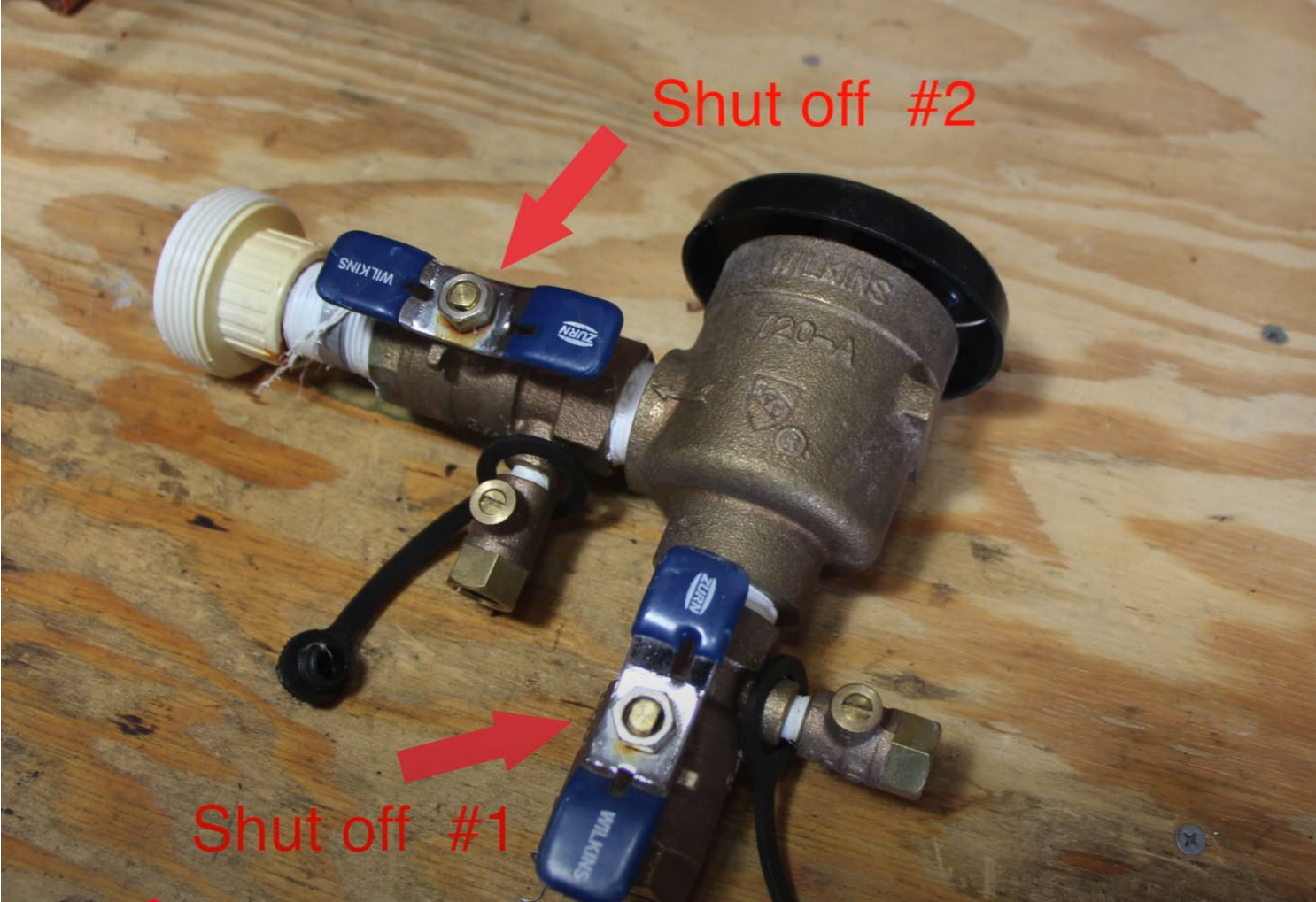
This will allow any residual water to escape.



# Test Cock #1 is open (Parallel) #2 is closed (Perpendicular)



# Backflow Assembly (Open Position)

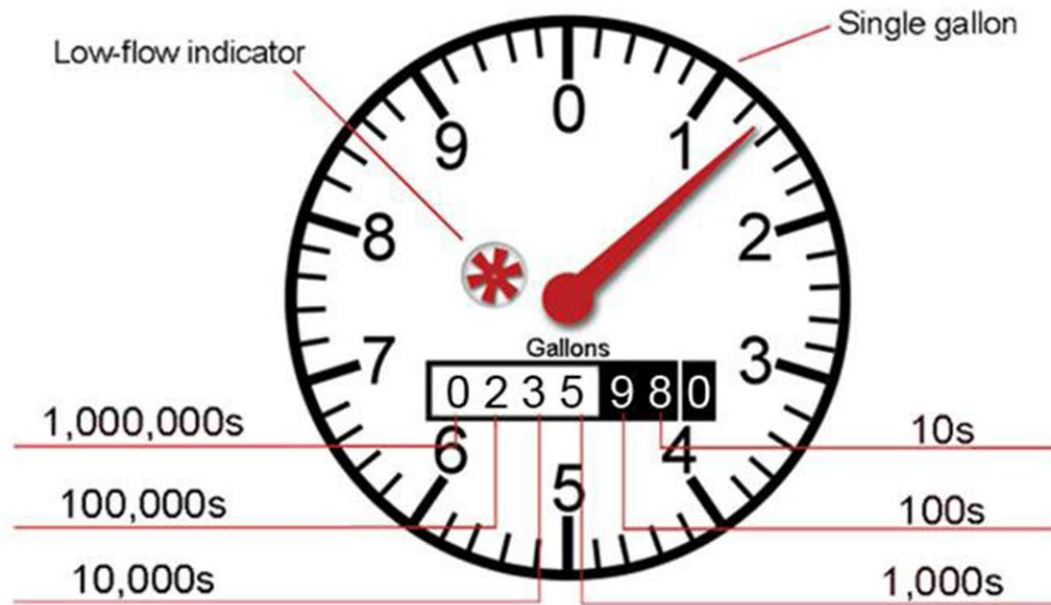


# Turn off Your Timer



# Do you have a leak?

- Turn off all devices using water inside and outside of your home
- Locate your water meter (out by the street), open the lid and inspect for usage.
- Is the low flow indicator active? If yes you have a leak.



## 3 possible locations of leaks

- Inside the house (toilets most common).
- Outside Irrigation (open drain valve or stuck irrigation valve).
- Service line between meter and house.



## Manage Your Water Use with TMWA's Smart Meter Tools

TMWA's smart meters give you powerful, real-time information about your water use—right at your fingertips. With almost all our customers now connected to our advanced metering system, it's easier than ever to take control of your water consumption, detect leaks early, and save money.

**Set a Leak Alert:** Learn step-by-step how to create a leak alert so you can be notified if your water use spikes unexpectedly.

**Track Your Water Use, Read Your Meter and Determine if You Have a Leak:** See how to view your daily water use data and compare it over time to spot possible leaks. This video also shows how to safely remove your meter box lid to take a manual reading if needed.

These tools are designed to help you conserve water, avoid costly damage from undetected leaks, and make informed choices about your water use.

[TMWA.com/ami-how-to/](https://tmwa.com/ami-how-to/)



# We're here to help 😊

From irrigation start-up & winterization to Conservation Audits and everything in between, TMWA is here to help you understand the Weather-Wise Watering needs of your landscape through the seasons.

- Call us! 775-834-8005
- Email us! [Conservation@tmwa.com](mailto:Conservation@tmwa.com)



Thank you

TMWA Conservation Team  
[www.tmwa.com](http://www.tmwa.com)

