

# APPENDIX 10K WATER METERS – SMALL

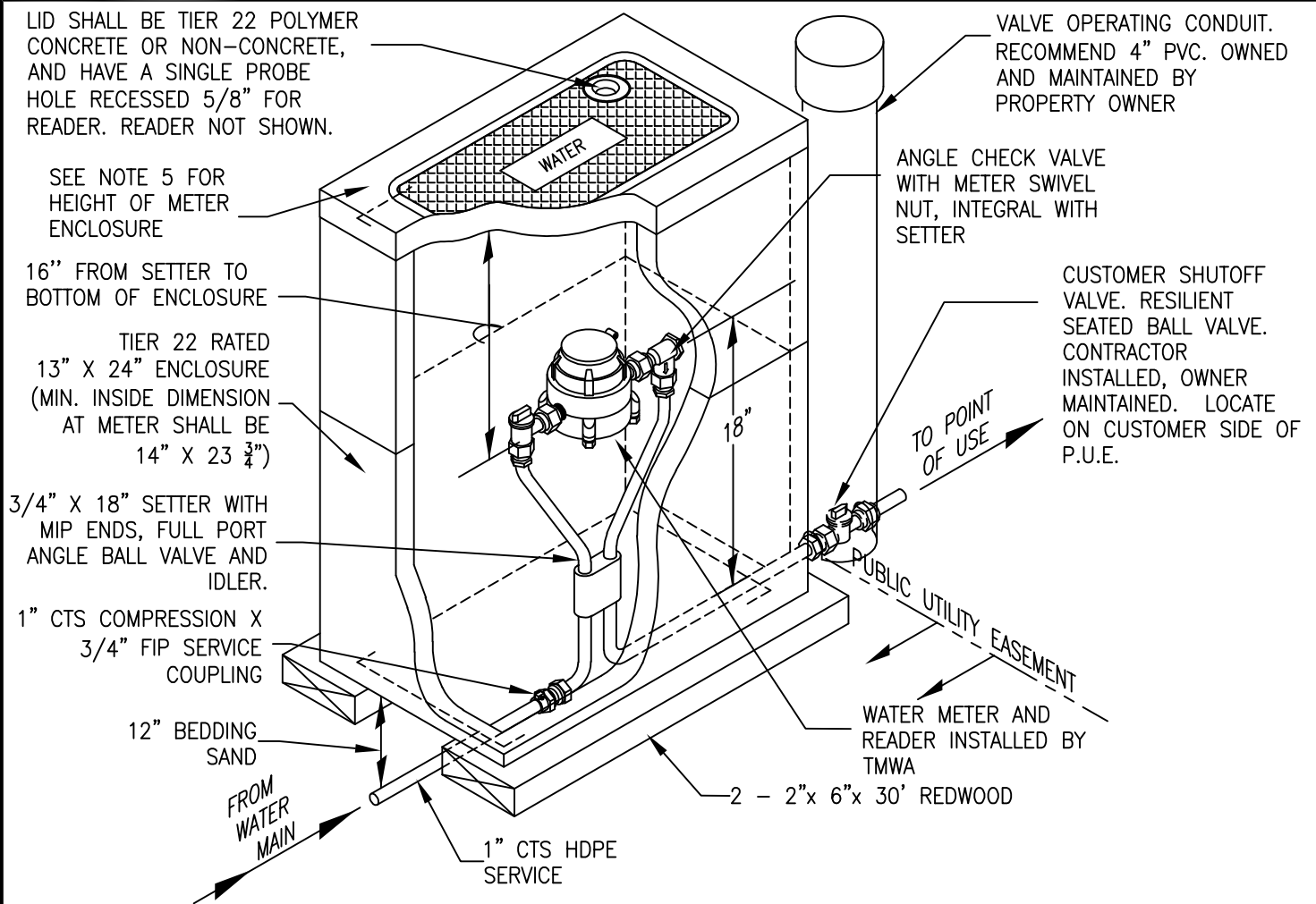
<u>DESCRIPTION</u>	<u>DRAWING #</u>
INDEX	10K-1
<u>NEW SERVICE – RESIDENTIAL WITH SINGLE CHECK OUTLET</u>	
3/4" SETTER FOR 1" SERVICE LINE	10K-2
1" SETTER FOR 1-1/4" SERVICE LINE	10K-3
1-1/2" SETTER FOR 1-1/2" SERVICE LINE	10K-4
2" SETTER FOR 2" SERVICE LINE	10K-5
3/4" DUAL SETTER FOR 1" SERVICE LINE	10K-6
<u>NEW SERVICE – COMMERCIAL WITH NON-CHECK OUTLET</u>	
3/4" SETTER FOR 1" SERVICE LINE	10K-7
1" SETTER FOR 1-1/4" SERVICE LINE	10K-8
1-1/2" SETTER FOR 1-1/2" SERVICE LINE	10K-9
2" SETTER FOR 2" SERVICE LINE	10K-10
3/4" DUAL SETTER FOR 1" SERVICE LINE	10K-11
<u>RETROFIT SERVICE</u>	
3/4" SETTER FOR 1" SERVICE LINE	10K-12
1" SETTER FOR 1-1/4" SERVICE LINE	10K-13
1-1/2" SETTER FOR 1-1/2" SERVICE LINE	10K-14
2" SETTER FOR 2" SERVICE LINE	10K-15
3/4" DUAL SETTER FOR 1" SERVICE LINE	10K-16
<u>TRAFFIC RATED WATER METER ENCLOSURES</u>	
13x24 TRAFFIC RATED ENCLOSURE FOR 3/4" & 1" METER INSTALLATIONS	10K-17
17x30 TRAFFIC RATED ENCLOSURE FOR 1-1/2", 2" AND DUAL 3/4" METER INSTALLATIONS	10K-18
<u>REMOTE READER ENCLOSURES</u>	
REMOTE READER ENCLOSURE INSTALLATIONS	10K-19



DATE  
6/2004  
REV  
5/2024

APPENDIX 10K  
WATER METERS - SMALL  
INDEX

DRAWING NUMBER  
10K-1



#### NOTES:

- COVER SHALL BE HUBBELL, JENSEN PRECAST, OLDCASTLE, OR CHANNELL AND HAVE: ANSI/SCTE 77 TIER 22 RATING (SEE NOTE 4) AND PROBE HOLE RECESSED 5/8" TO ALLOW FOR FLUSH MOUNT OF READER
- THERMAL EXPANSION PROTECTION IS REQUIRED IN ANY DOMESTIC WATER SUPPLY SYSTEM. REFERENCE: UNIFORM PLUMBING CODE.
- METER AND READER SUPPLIED AND INSTALLED BY TMWA.
- FOR NON-DELIBERATE TRAFFIC AREAS USE 13" X 24" ANSI/SCTE 77 TIER 22 BOX AND COVER. FOR DELIBERATE TRAFFIC AREAS USE 13" X 24" ENCLOSURE APPROVED FOR TRAFFIC RATED H/20 LOADING AND REMOTE READER ENCLOSURE. SEE DETAIL 10K-17 AND 10K-19.
- TOP OF METER ENCLOSURE SHALL BE SET 0.2 FEET ABOVE HIGHEST FINISHED GRADE SURROUNDING ENCLOSURE WITHIN LANDSCAPED AREAS, AND SHALL BE SET FLUSH WITH SURROUNDING FINISH GRADE IN PAVED AREAS. ENCLOSURE MAY BE ONE PIECE 24" IN HEIGHT OR BE 12" ENCLOSURE WITH A 12" RISER.
- ENCLOSURE TO BE BACKFILLED WITH WATER PIPE BEDDING SAND ONLY, SEE SECTION 5, TRENCH BEDDING & BACKFILL.
- 4' X 4' INSULATING BLANKET TO BE INSTALLED ABOVE METER AND BELOW READER.
- UPON AUTHORITY APPROVAL 18" SETTER MAY BE REPLACED WITH TALLER SETTERS.
- CONTRACTOR TO INSTALL IDLER WITH ALL SETTERS.
- CONTRACTOR TO INSTALL SOLID PLUG IN PROBE HOLE OF LID.
- ALL COMPONENTS IN CONTACT WITH WATER SHALL BE NSF-61 CERTIFIED.



DATE

6/2004

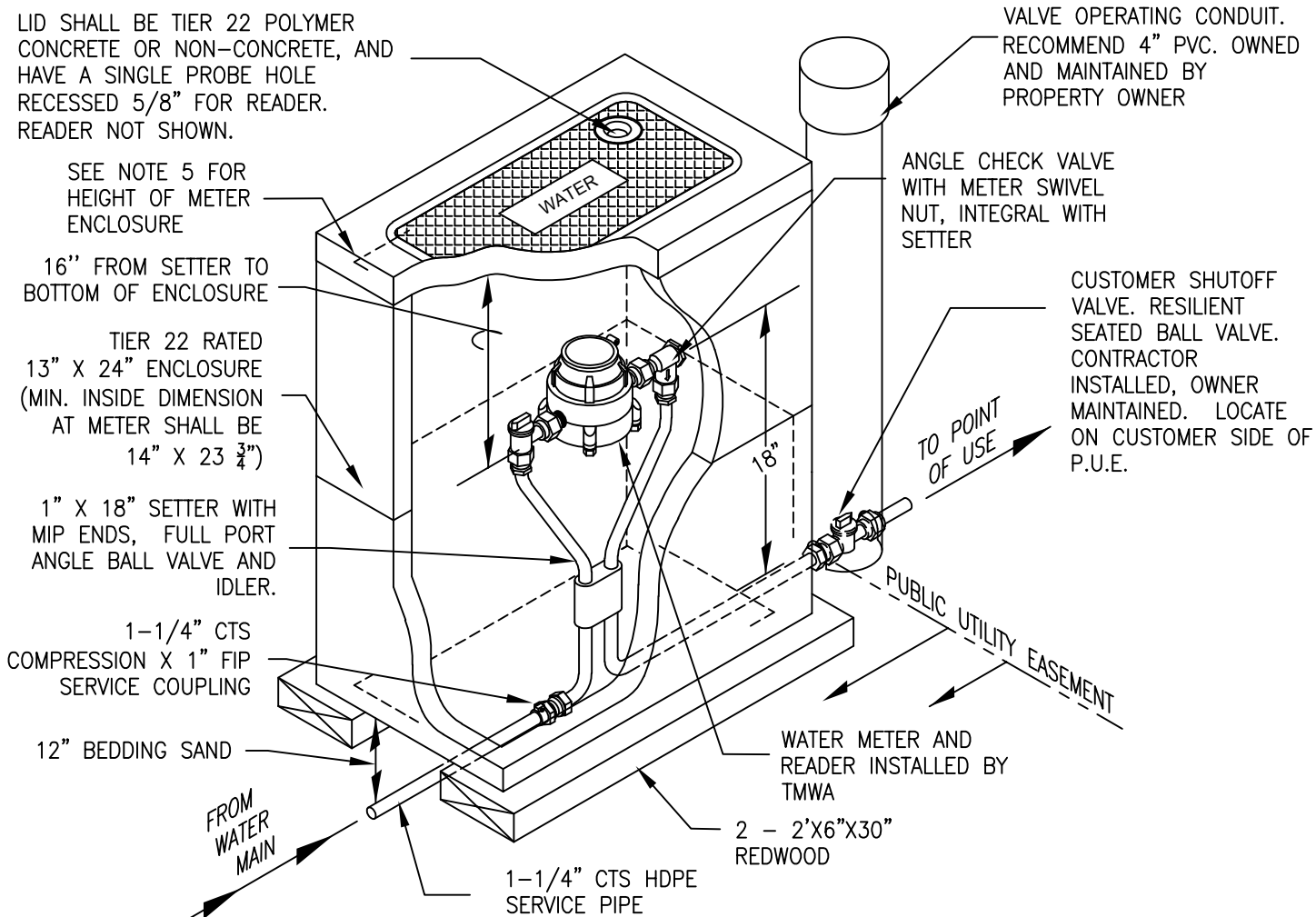
REV

5/2024

APPENDIX 10K  
WATER METERS - SMALL  
NEW RESIDENTIAL INSTALLATION  
1" SINGLE SERVICE LINE  
FOR 3/4" SETTER WITH ANGLE CHECK,  
METER AND READER

DRAWING NUMBER

10K-2



#### NOTES:

- COVER SHALL BE HUBBELL, JENSEN PRECAST, OLDCASTLE, OR CHANNELL AND HAVE: ANSI/SCTE 77 TIER 22 RATING (SEE NOTE 4) AND PROBE HOLE RECESSED 5/8" TO ALLOW FOR FLUSH MOUNT READER
- THERMAL EXPANSION PROTECTION IS REQUIRED IN ANY DOMESTIC WATER SUPPLY SYSTEM. REFERENCE: UNIFORM PLUMBING CODE.
- METER AND READER SUPPLIED AND INSTALLED BY TMWA.
- FOR NON-DELIBERATE TRAFFIC AREAS USE 13" X 24" ANSI/SCTE 77 TIER 22 BOX AND COVER. FOR DELIBERATE TRAFFIC AREAS USE 13" X 24" ENCLOSURE APPROVED FOR TRAFFIC RATED H/20 LOADING AND REMOTE READER ENCLOSURE. SEE DETAIL 10K-17 AND 10K-19.
- TOP OF METER ENCLOSURE SHALL BE SET 0.2 FEET ABOVE HIGHEST FINISHED GRADE SURROUNDING ENCLOSURE WITHIN LANDSCAPED AREAS, AND SHALL BE SET FLUSH WITH SURROUNDING FINISH GRADE IN PAVED AREAS. ENCLOSURE MAY BE ONE PIECE 24" IN HEIGHT OR BE 12" ENCLOSURE WITH A 12" RISER.
- ENCLOSURE TO BE BACKFILLED WITH WATER PIPE BEDDING SAND ONLY, SEE SECTION 5, TRENCH BEDDING & BACKFILL.
- 4' X 4' INSULATING BLANKET TO BE INSTALLED ABOVE METER AND BELOW READER.
- UPON AUTHORITY APPROVAL 18" SETTER MAY BE REPLACED WITH TALLER SETTERS.
- CONTRACTOR TO INSTALL IDLER WITH ALL SETTERS.
- CONTRACTOR TO INSTALL SOLID PLUG IN PROBE HOLE OF LID.
- ALL COMPONENTS IN CONTACT WITH WATER SHALL BE NSF-61 CERTIFIED.



DATE

6/2004

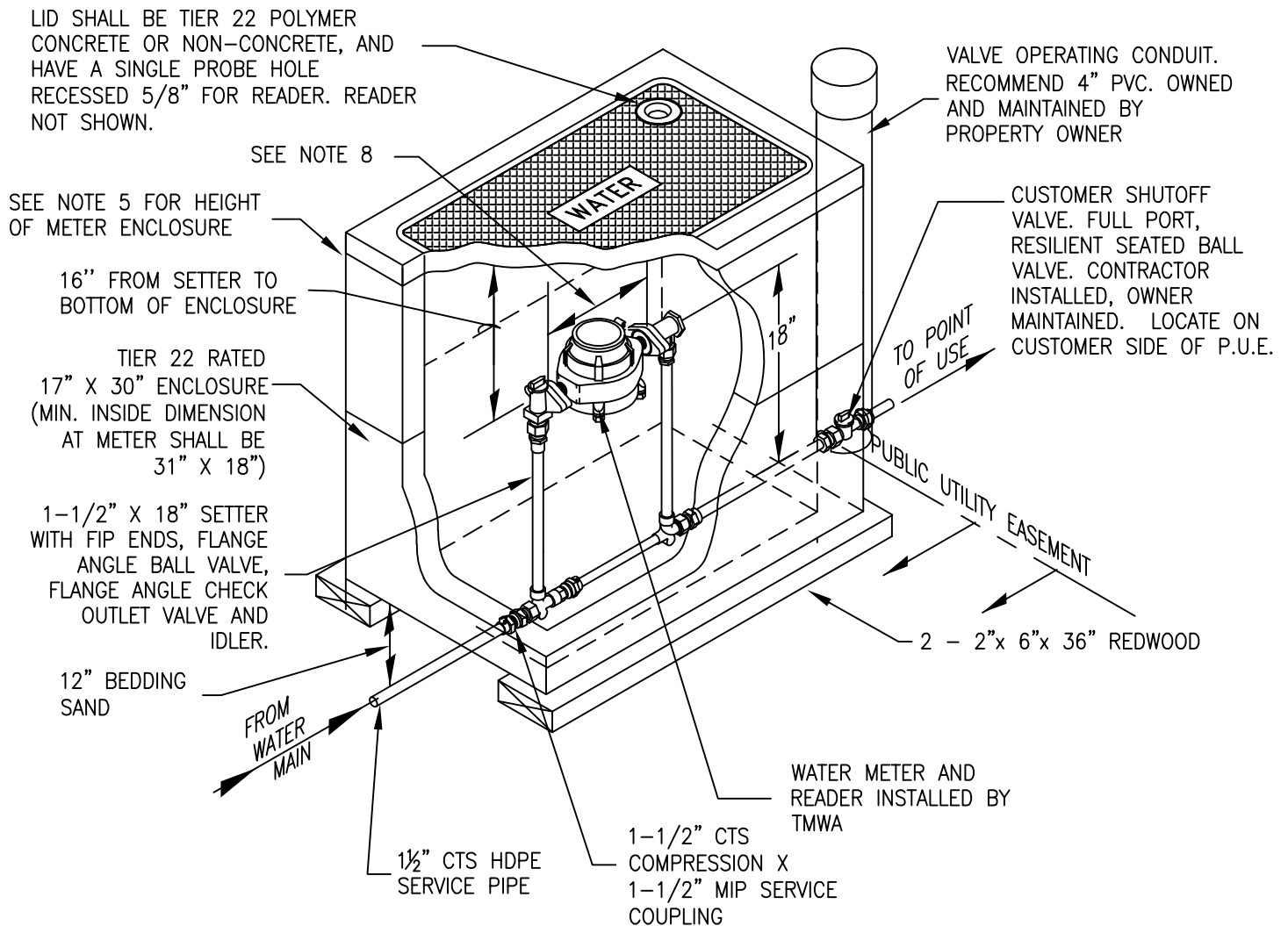
REV

5/2024

APPENDIX 10K  
WATER METERS - SMALL  
NEW RESIDENTIAL INSTALLATION  
1-1/4" SINGLE SERVICE LINE  
FOR 1" SETTER WITH ANGLE CHECK,  
METER AND READER

DRAWING NUMBER

10K-3



#### NOTES:

- COVER SHALL BE HUBBELL, JENSEN PRECAST, OLDCASTLE, OR CHANNELL AND HAVE: ANSI/SCTE 77 TIER 22 RATING (SEE NOTE 4); WEIGHT OF LESS THAN 50 POUNDS (UNLESS APPROVED BY THE AUTHORITY); AND PROBE HOLE RECESSED 5/8" TO ALLOW FOR FLUSH MOUNT OF READER
- THERMAL EXPANSION PROTECTION IS REQUIRED IN ANY DOMESTIC WATER SUPPLY SYSTEM. REFERENCE: UNIFORM PLUMBING CODE.
- METER AND READER SUPPLIED AND INSTALLED BY TMWA.
- FOR NON-DELIBERATE TRAFFIC AREAS USE 17" X 30" ANSI/SCTE 77 TIER 22 BOX AND COVER. FOR DELIBERATE TRAFFIC AREAS USE 17" X 30" ENCLOSURE APPROVED FOR TRAFFIC RATED H/20 LOADING AND REMOTE READER ENCLOSURE. SEE DETAIL 10K-18 AND 10K-19.
- TOP OF METER ENCLOSURE SHALL BE SET 0.2 FEET ABOVE HIGHEST FINISHED GRADE SURROUNDING ENCLOSURE WITHIN LANDSCAPED AREAS, AND SHALL BE SET FLUSH WITH SURROUNDING FINISH GRADE IN PAVED AREAS. ENCLOSURE MAY BE ONE PIECE 24" IN HEIGHT OR BE 12" ENCLOSURE WITH A 12" RISER.
- ENCLOSURE TO BE BACKFILLED WITH WATER PIPE BEDDING SAND ONLY, SEE SECTION 5, TRENCH BEDDING & BACKFILL.
- 4' X 4' INSULATING BLANKET TO BE INSTALLED ABOVE METER AND BELOW READER.
- DISTANCE BETWEEN FLANGES SHALL BE 13.25".
- UPON AUTHORITY APPROVAL 18" SETTER MAY BE REPLACED WITH TALLER SETTERS.
- CONTRACTOR TO INSTALL IDLER WITH ALL SETTERS.
- CONTRACTOR TO INSTALL SOLID PLUG IN PROBE HOLE OF LID.
- ALL COMPONENTS IN CONTACT WITH WATER SHALL BE NSF-61 CERTIFIED.



DATE

6/2004

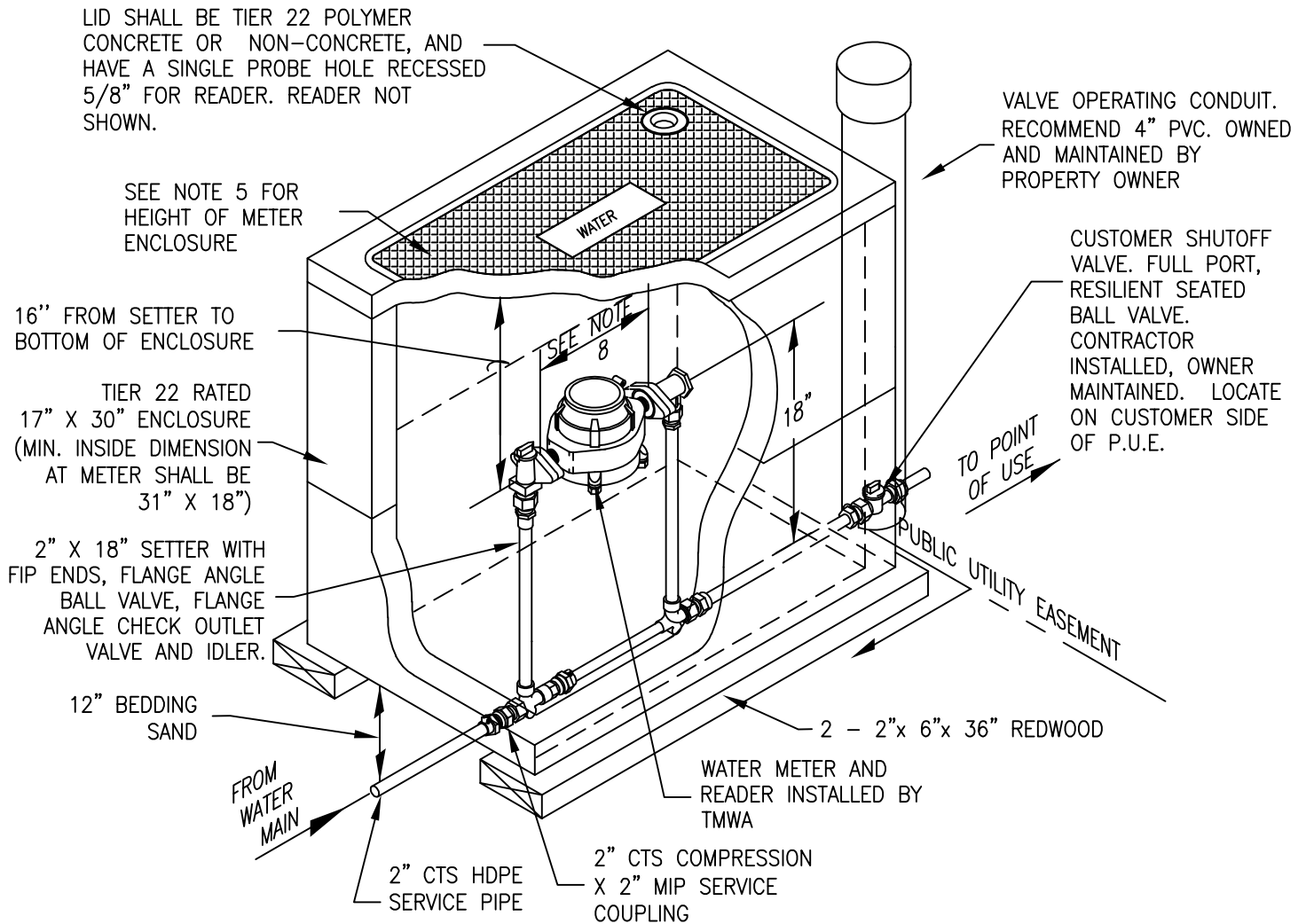
REV

5/2024

APPENDIX 10K  
WATER METERS - SMALL  
NEW RESIDENTIAL INSTALLATION  
1-1/2" SINGLE SERVICE LINE  
FOR 1-1/2" SETTER WITH ANGLE CHECK,  
METER AND READER

DRAWING NUMBER

10K-4



**NOTES:**

- COVER SHALL BE HUBBELL, JENSEN PRECAST, OLDCASTLE, OR CHANNELL, AND HAVE: ANSI/SCTE 77 TIER 22 RATING (SEE NOTE 4); WEIGHT OF LESS THAN 50 POUNDS (UNLESS APPROVED BY THE AUTHORITY); AND PROBE HOLE RECESSED 5/8" TO ALLOW FOR FLUSH MOUNT OF READER
- THERMAL EXPANSION PROTECTION IS REQUIRED IN ANY DOMESTIC WATER SUPPLY SYSTEM. REFERENCE: UNIFORM PLUMBING CODE.
- METER AND READER SUPPLIED AND INSTALLED BY TMWA.
- FOR NON-DELIBERATE TRAFFIC AREAS USE 17" X 30" ANSI/SCTE 77 TIER 22 BOX AND COVER. FOR DELIBERATE TRAFFIC AREAS USE 17" X 30" ENCLOSURE APPROVED FOR TRAFFIC RATED H/20 LOADING AND REMOTE READER ENCLOSURE. SEE DETAIL 10K-18 AND 10K-19.
- TOP OF METER ENCLOSURE SHALL BE SET 0.2 FEET ABOVE HIGHEST FINISHED GRADE SURROUNDING ENCLOSURE WITHIN LANDSCAPED AREAS, AND SHALL BE SET FLUSH WITH SURROUNDING FINISH GRADE IN PAVED AREAS. ENCLOSURE MAY BE ONE PIECE 24" IN HEIGHT OR BE 12" ENCLOSURE WITH A 12" RISER.
- ENCLOSURE TO BE BACKFILLED WITH WATER PIPE BEDDING SAND ONLY, SEE SECTION 5, TRENCH BEDDING & BACKFILL.
- 4' X 4' INSULATING BLANKET TO BE INSTALLED ABOVE METER AND BELOW READER.
- DISTANCE BETWEEN FLANGES SHALL BE 17.25".
- UPON AUTHORITY APPROVAL 18" SETTER MAY BE REPLACED WITH OTHER HEIGHTS.
- CONTRACTOR SHALL INSTALL IDLER WITH ALL SETTERS.
- CONTRACTOR TO INSTALL SOLID PLUG IN PROBE HOLE OF LID.
- ALL COMPONENTS IN CONTACT WITH WATER SHALL BE NSF-61 CERTIFIED.



DATE

6/2004

REV

5/2024

APPENDIX 10K  
WATER METERS - SMALL  
NEW RESIDENTIAL INSTALLATION  
2" SINGLE SERVICE LINE  
FOR 2" SETTER WITH ANGLE CHECK,  
METER AND READER

DRAWING NUMBER

10K-5

LID SHALL BE TIER 22 POLYMER CONCRETE OR NON-CONCRETE, AND HAVE A SINGLE PROBE HOLE RECESSED 5/8" FOR READER. READER NOT SHOWN.

SEE NOTE 5 FOR HEIGHT OF METER ENCLOSURE

VALVE OPERATING CONDUIT. RECOMMEND 4" PVC. OWNED AND MAINTAINED BY PROPERTY OWNER

16" FROM METER TO BOTTOM OF ENCLOSURE

ANGLE CHECK VALVE WITH METER SWIVEL NUT, INTEGRAL WITH SETTER

TIER 22 RATED 17" X 30" ENCLOSURE (MIN. INSIDE DIMENSION AT METER SHALL BE 31" X 18")

2 - 2"x 6"x 24" REDWOOD

CUSTOMER SHUTOFF VALVE. RESILIENT SEATED BALL VALVE. CONTRACTOR INSTALLED, OWNER MAINTAINED. LOCATE ON CUSTOMER SIDE OF P.U.E.

12" BEDDING SAND

TO POINT OF USE  
PUBLIC UTILITY EASEMENT

WATER METERS AND READER INSTALLED BY TMWA

FROM WATER MAIN

1" CTS HDPE SERVICE PIPE

2 - 3/4" X 18" SETTERS WITH MIP ENDS, FULL PORT ANGLE BALL VALVE AND IDLERS.

2 - 1" CTS COMPRESSION X 3/4" FIP SERVICE COUPLING

#### NOTES:

- COVER SHALL BE HUBBELL, JENSEN PRECAST, OLDCASTLE, OR CHANNELL AND HAVE: ANSI/SCTE 77 TIER 22 RATING (SEE NOTE 4); WEIGHT OF LESS THAN 50 POUNDS (UNLESS APPROVED BY THE AUTHORITY); AND PROBE HOLE RECESSED 5/8" TO ALLOW FOR FLUSH MOUNT OF READER
- THERMAL EXPANSION PROTECTION IS REQUIRED IN ANY DOMESTIC WATER SUPPLY SYSTEM. REFERENCE: UNIFORM PLUMBING CODE.
- METER AND READER SUPPLIED AND INSTALLED BY TMWA.
- FOR NON-DELIBERATE TRAFFIC AREAS USE 17" X 30" ANSI/SCTE 77 TIER 22 BOX AND COVER. FOR DELIBERATE TRAFFIC AREAS USE 17" X 30" ENCLOSURE APPROVED FOR TRAFFIC RATED H/20 LOADING AND REMOTE READER ENCLOSURE. SEE DETAIL 10K-18 AND 10K-19.
- TOP OF METER ENCLOSURE SHALL BE SET 0.2 FEET ABOVE HIGHEST FINISHED GRADE SURROUNDING ENCLOSURE WITHIN LANDSCAPED AREAS, AND SHALL BE SET FLUSH WITH SURROUNDING FINISH GRADE IN PAVED AREAS. ENCLOSURE MAY BE ONE PIECE 24" IN HEIGHT OR BE 12" ENCLOSURE WITH A 12" RISER.
- ENCLOSURE TO BE BACKFILLED WITH WATER PIPE BEDDING SAND ONLY, SEE SECTION 5, TRENCH BEDDING & BACKFILL.
- 4' X 4' INSULATING BLANKET TO BE INSTALLED ABOVE METER AND BELOW READER.
- CONTRACTOR TO INSTALL IDLER WITH ALL SETTERS.
- CONTRACTOR TO INSTALL SOLID PLUG IN PROBE HOLE OF LID.
- UPON AUTHORITY APPROVAL 18" SETTER MAY BE REPLACED WITH TALLER SETTERS.
- ALL COMPONENTS IN CONTACT WITH WATER SHALL BE NSF-61 CERTIFIED.



DATE

6/2004

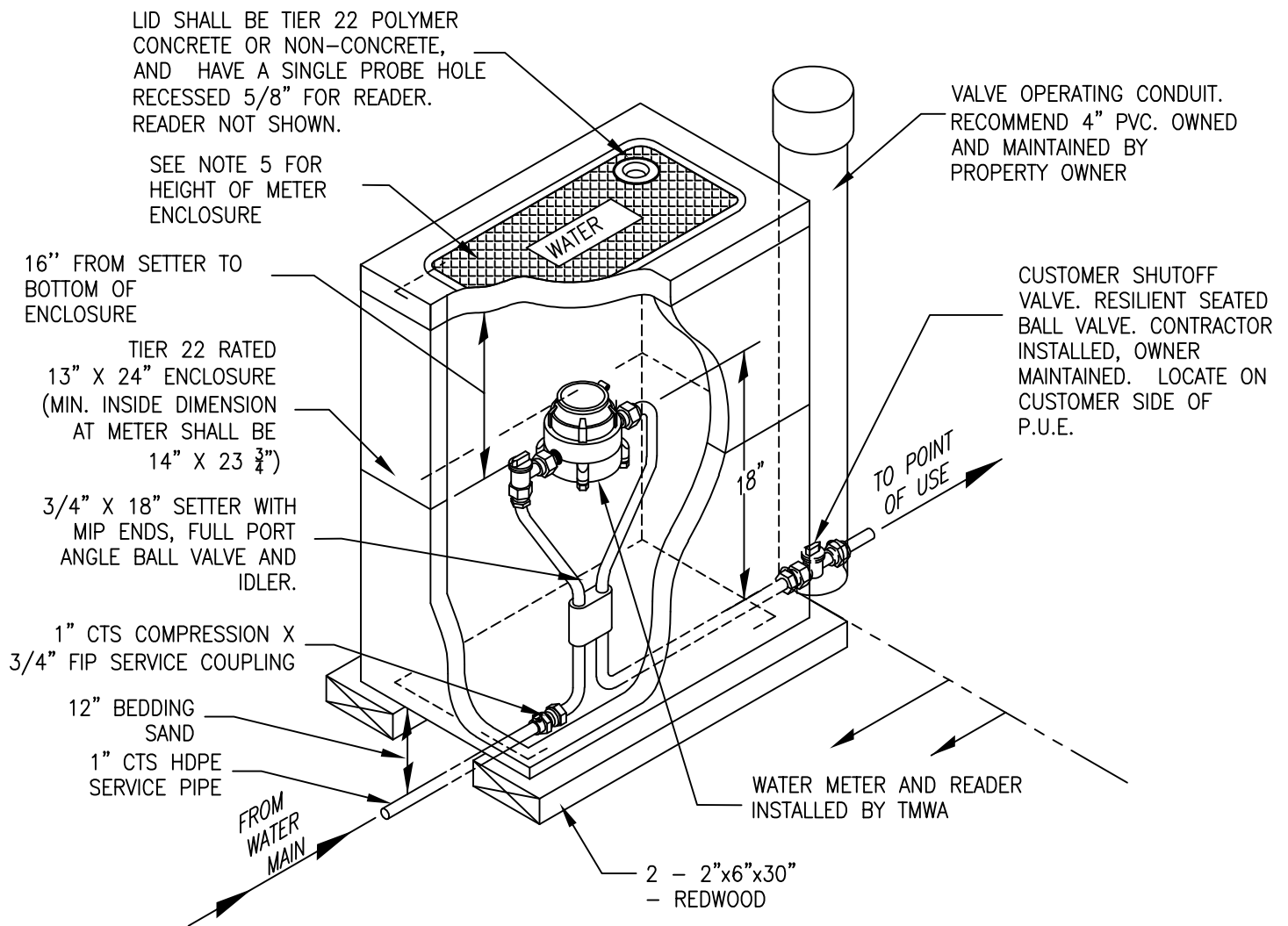
REV

5/2024

APPENDIX 10K  
WATER METERS - SMALL  
NEW RESIDENTIAL INSTALLATION  
1" DUAL SERVICE LINE  
FOR 3/4" SETTER ANGLE CHECK,  
METER AND READER

DRAWING NUMBER

10K-6



**NOTES:**

1. COVER SHALL BE HUBBELL, JENSEN PRECAST, OLDCASTLE, OR CHANNELL AND HAVE: ANSI/SCTE 77 TIER 22 RATING (SEE NOTE 4) AND PROBE HOLE RECESSED 5/8" TO ALLOW FOR FLUSH MOUNT OF READER
2. THERMAL EXPANSION PROTECTION IS REQUIRED IN ANY DOMESTIC WATER SUPPLY SYSTEM. REFERENCE: UNIFORM PLUMBING CODE.
3. METER AND READER SUPPLIED AND INSTALLED BY TMWA.
4. FOR NON-DELIBERATE TRAFFIC AREAS USE 13" X 24" ANSI/SCTE 77 TIER 22 BOX AND COVER. FOR DELIBERATE TRAFFIC AREAS USE 13" X 24" ENCLOSURE APPROVED FOR TRAFFIC RATED H/20 LOADING AND REMOTE READER ENCLOSURE. SEE DETAIL 10K-17 AND 10K-19.
5. TOP OF METER ENCLOSURE SHALL BE SET 0.2 FEET ABOVE HIGHEST FINISHED GRADE SURROUNDING ENCLOSURE WITHIN LANDSCAPED AREAS, AND SHALL BE SET FLUSH WITH SURROUNDING FINISH GRADE IN PAVED AREAS. ENCLOSURE MAY BE ONE PIECE 24" IN HEIGHT OR BE 12" ENCLOSURE WITH A 12" RISER.
6. ENCLOSURE TO BE BACKFILLED WITH WATER PIPE BEDDING SAND ONLY, SEE SECTION 5, TRENCH BEDDING & BACKFILL.
7. 4' X 4' INSULATING BLANKET TO BE INSTALLED ABOVE METER AND BELOW READER.
8. UPON AUTHORITY APPROVAL 18" SETTER MAY BE REPLACED WITH TALLER SETTERS.
9. CONTRACTOR TO INSTALL IDLER WITH ALL SETTERS.
10. CONTRACTOR TO INSTALL SOLID PLUG IN PROBE HOLE OF LID.
11. ALL COMPONENTS IN CONTACT WITH WATER SHALL BE NSF-61 CERTIFIED.



DATE

6/2004

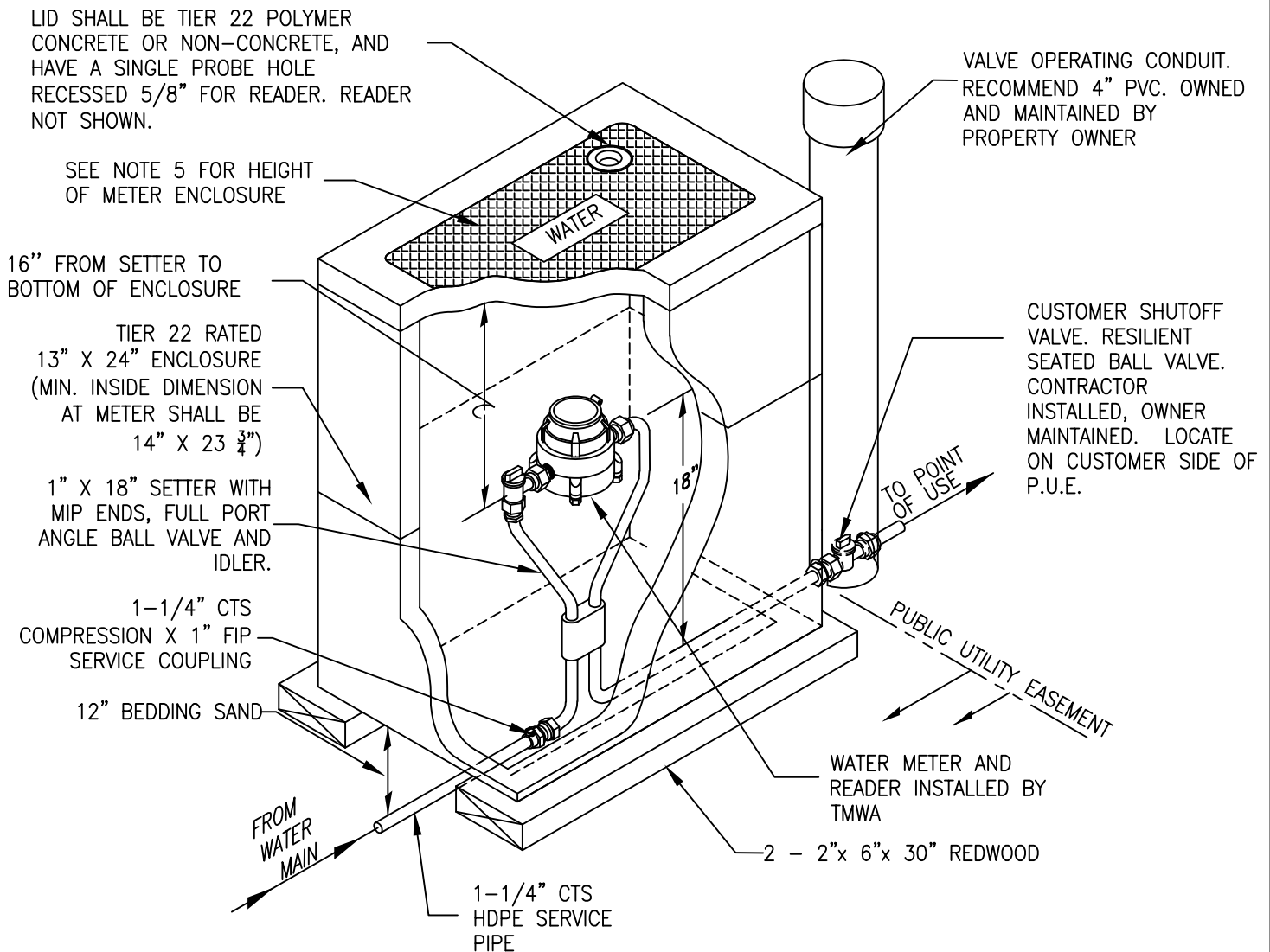
REV

5/2024

APPENDIX 10K  
WATER METERS - SMALL  
NEW COMMERCIAL INSTALLATION  
1" SINGLE SERVICE LINE  
FOR 3/4" SETTER, METER  
AND READER

DRAWING NUMBER

10K-7



**NOTES:**

- COVER SHALL BE HUBBELL, JENSEN PRECAST, OLDCASTLE, OR CHANNELL AND HAVE: ANSI/SCTE 77 TIER 22 RATING (SEE NOTE 4) AND PROBE HOLE RECESSED 5/8" TO ALLOW FOR FLUSH MOUNT OF READER
- THERMAL EXPANSION PROTECTION IS REQUIRED IN ANY DOMESTIC WATER SUPPLY SYSTEM. REFERENCE: UNIFORM PLUMBING CODE.
- METER AND READER SUPPLIED AND INSTALLED BY TMWA.
- FOR NON-DELIBERATE TRAFFIC AREAS USE 13" X 24" ANSI/SCTE 77 TIER 22 BOX AND COVER. FOR DELIBERATE TRAFFIC AREAS USE 13" X 24" ENCLOSURE APPROVED FOR TRAFFIC RATED H/20 LOADING AND REMOTE READER ENCLOSURE. SEE DETAIL 10K-17 AND 10K-19.
- TOP OF METER ENCLOSURE SHALL BE SET 0.2 FEET ABOVE HIGHEST FINISHED GRADE SURROUNDING ENCLOSURE WITHIN LANDSCAPED AREAS, AND SHALL BE SET FLUSH WITH SURROUNDING FINISH GRADE IN PAVED AREAS. ENCLOSURE MAY BE ONE PIECE 24" IN HEIGHT OR BE 12" ENCLOSURE WITH A 12" RISER.
- ENCLOSURE TO BE BACKFILLED WITH WATER PIPE BEDDING SAND ONLY, SEE SECTION 5, TRENCH BEDDING & BACKFILL.
- 4' X 4' INSULATING BLANKET TO BE INSTALLED ABOVE METER AND BELOW READER.
- UPON AUTHORITY APPROVAL 18" SETTER MAY BE REPLACED WITH TALLER SETTERS.
- CONTRACTOR TO INSTALL IDLER WITH ALL SETTERS.
- CONTRACTOR TO INSTALL SOLID PLUG IN PROBE HOLE OF LID.
- ALL COMPONENTS IN CONTACT WITH WATER SHALL BE NSF-61 CERTIFIED.



DATE

6/2004

REV

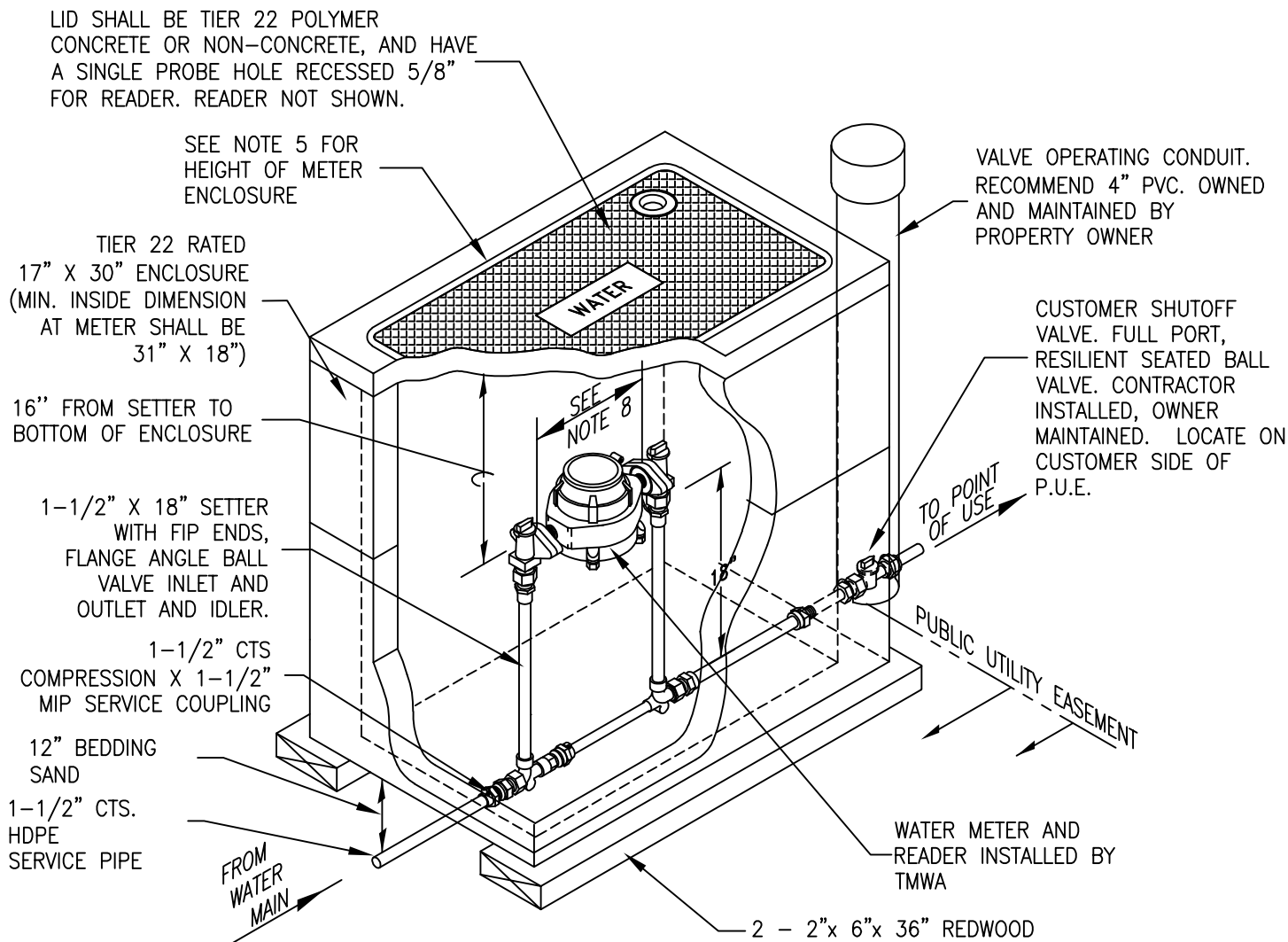
5/2024

APPENDIX 10K  
WATER METERS - SMALL  
NEW COMMERCIAL INSTALLATION  
1-1/4" SINGLE SERVICE LINE  
FOR 1" SETTER, METER  
AND READER

DRAWING NUMBER

10K-8





#### NOTES:

- COVER SHALL BE HUBBELL, JENSEN PRECAST, OLDCASTLE, OR CHANNELL AND HAVE: ANSI/SCTE 77 TIER 22 RATING (SEE NOTE 4); WEIGHT OF LESS THAN 50 POUNDS (UNLESS APPROVED BY THE AUTHORITY); AND PROBE HOLE RECESSED 5/8" TO ALLOW FOR FLUSH MOUNT OF READER
- THERMAL EXPANSION PROTECTION IS REQUIRED IN ANY DOMESTIC WATER SUPPLY SYSTEM. REFERENCE: UNIFORM PLUMBING CODE.
- METER AND READER SUPPLIED AND INSTALLED BY TMWA.
- FOR NON-DELIBERATE TRAFFIC AREAS USE 17" X 30" ANSI/SCTE 77 TIER 22 BOX AND COVER. FOR DELIBERATE TRAFFIC AREAS USE 17" X 30" ENCLOSURE APPROVED FOR TRAFFIC RATED H/20 LOADING AND REMOTE READER ENCLOSURE. SEE DETAIL 10K-18 AND 10K-19.
- TOP OF METER ENCLOSURE SHALL BE SET 0.2 FEET ABOVE HIGHEST FINISHED GRADE SURROUNDING ENCLOSURE WITHIN LANDSCAPED AREAS, AND SHALL BE SET FLUSH WITH SURROUNDING FINISH GRADE IN PAVED AREAS. ENCLOSURE MAY BE ONE PIECE 24" IN HEIGHT OR BE 12" ENCLOSURE WITH A 12" RISER.
- ENCLOSURE TO BE BACKFILLED WITH WATER PIPE BEDDING SAND ONLY, SEE SECTION 5, TRENCH BEDDING & BACKFILL.
- 4' X 4' INSULATING BLANKET TO BE INSTALLED ABOVE METER AND BELOW READER.
- DISTANCE BETWEEN FLANGES TO BE 13.25"
- UPON AUTHORITY APPROVAL 18" SETTER MAY BE REPLACED WITH TALLER SETTERS.
- CONTRACTOR TO INSTALL IDLER WITH ALL SETTERS.
- CONTRACTOR TO INSTALL SOLID PLUG IN PROBE HOLE OF LID.
- ALL COMPONENTS IN CONTACT WITH WATER SHALL BE NSF-61 CERTIFIED.



DATE

6/2004

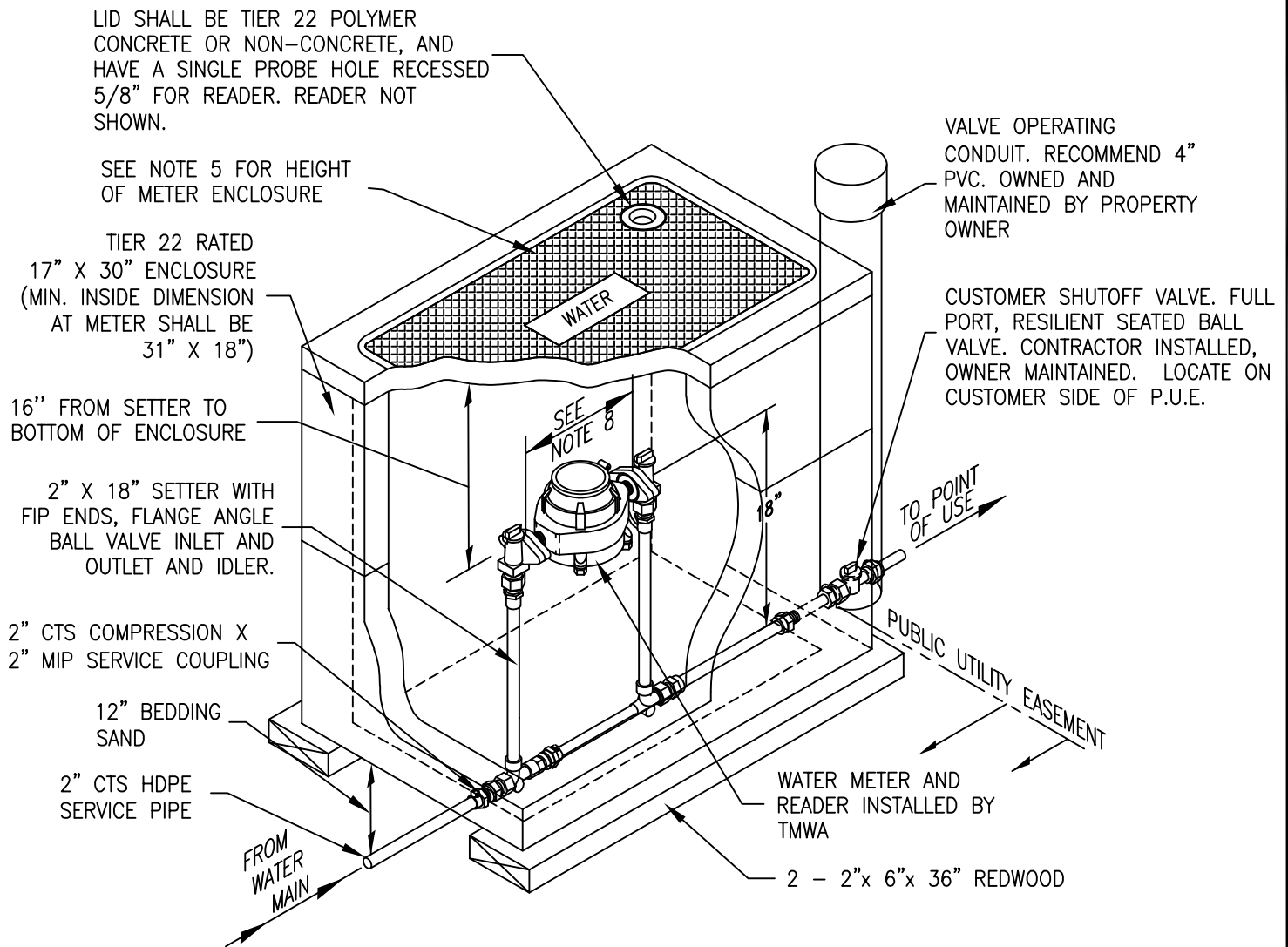
REV

5/2024

APPENDIX 10K  
WATER METERS - SMALL  
NEW COMMERCIAL INSTALLATION  
1-1/2" SINGLE SERVICE LINE  
FOR 1-1/2" SETTER, METER  
AND READER

DRAWING NUMBER

10K-9



**NOTES:**

1. COVER SHALL BE HUBBELL, JENSEN PRECAST, OLDCASTLE, OR CHANNELL AND HAVE: ANSI/SCTE 77 TIER 22 RATING (SEE NOTE 4); WEIGHT OF LESS THAN 50 POUNDS (UNLESS APPROVED BY THE AUTHORITY); AND PROBE HOLE RECESSED 5/8" TO ALLOW FOR FLUSH MOUNT OF READER
2. THERMAL EXPANSION PROTECTION IS REQUIRED IN ANY DOMESTIC WATER SUPPLY SYSTEM. REFERENCE: UNIFORM PLUMBING CODE.
3. METER AND READER SUPPLIED AND INSTALLED BY TMWA.
4. FOR NON-DELIBERATE TRAFFIC AREAS USE 17" X 30" ANSI/SCTE 77 TIER 22 BOX AND COVER. FOR DELIBERATE TRAFFIC AREAS USE 17" X 30" ENCLOSURE APPROVED FOR TRAFFIC RATED H/20 LOADING AND REMOTE READER ENCLOSURE. SEE DETAIL 10K-18 AND 10K-19.
5. TOP OF METER ENCLOSURE SHALL BE SET 0.2 FEET ABOVE HIGHEST FINISHED GRADE SURROUNDING ENCLOSURE WITHIN LANDSCAPED AREAS, AND SHALL BE SET FLUSH WITH SURROUNDING FINISH GRADE IN PAVED AREAS. ENCLOSURE MAY BE ONE PIECE 24" IN HEIGHT OR BE 12" ENCLOSURE WITH A 12" RISER.
6. ENCLOSURE TO BE BACKFILLED WITH WATER PIPE BEDDING SAND ONLY, SEE SECTION 5, TRENCH BEDDING & BACKFILL.
7. 4' X 4' INSULATING BLANKET TO BE INSTALLED ABOVE METER AND BELOW READER.
8. DISTANCE BETWEEN FLANGES SHALL BE 17.25".
9. UPON AUTHORITY APPROVAL 18" SETTER MAY BE REPLACED WITH TALLER SETTERS.
10. CONTRACTOR TO INSTALL IDLER WITH ALL SETTERS.
11. CONTRACTOR TO INSTALL SOLID PLUG IN PROBE HOLE OF LID.
12. ALL COMPONENTS IN CONTACT WITH WATER SHALL BE NSF-61 CERTIFIED.



DATE

6/2004

REV

5/2024

APPENDIX 10K  
WATER METERS - SMALL  
NEW COMMERCIAL INSTALLATION  
2" SINGLE SERVICE LINE  
FOR 2" SETTER, METER  
AND READER

DRAWING NUMBER

10K-10

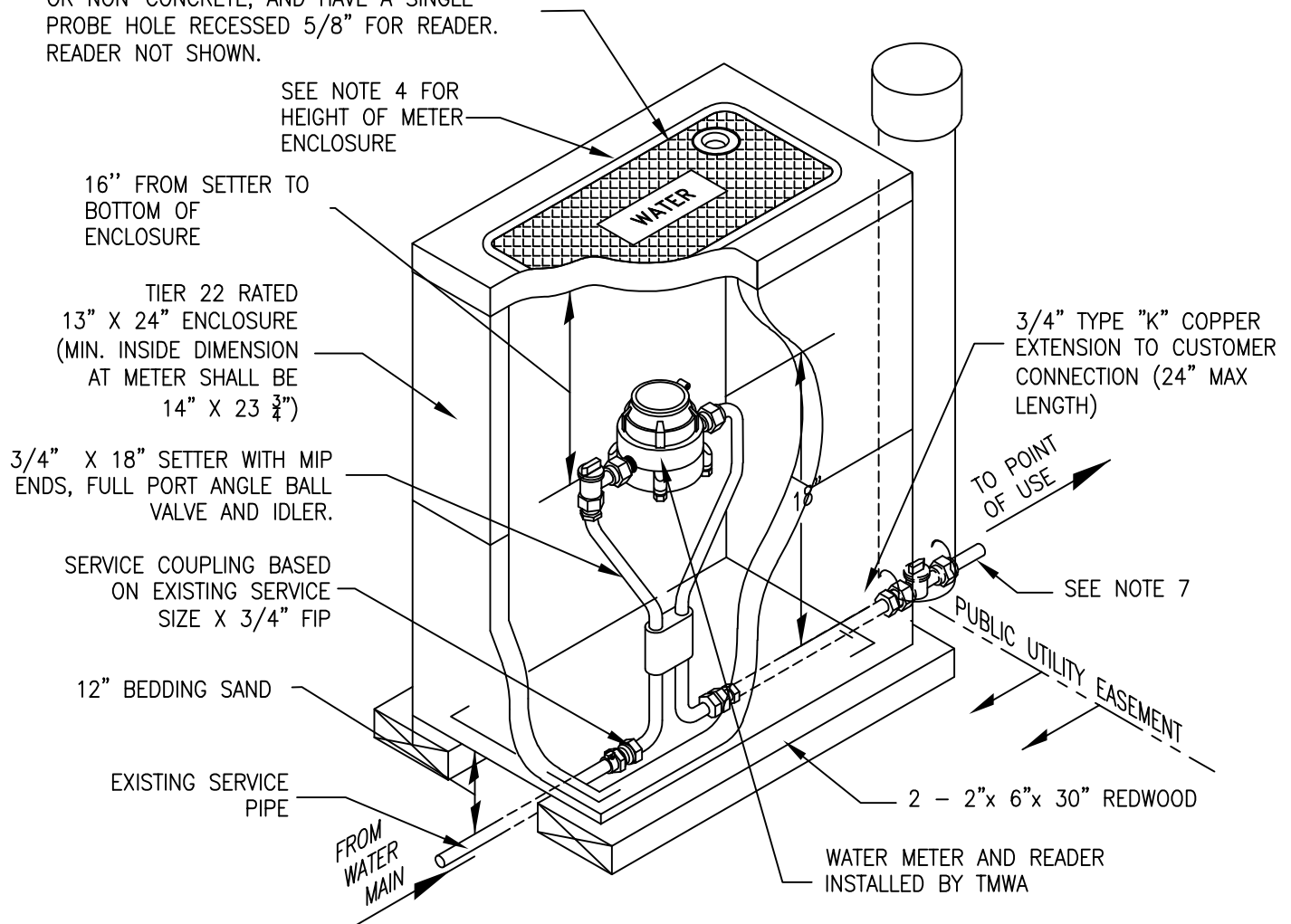


- 
- TRUCKEE MEADOWS WATER  
AUTHORITY

5/2024

## 10K-11

LID SHALL BE TIER 22 POLYMER CONCRETE OR NON-CONCRETE, AND HAVE A SINGLE PROBE HOLE RECESSED 5/8" FOR READER. READER NOT SHOWN.



#### NOTES:

1. COVER SHALL BE HUBBELL, JENSEN PRECAST, OLDCASTLE, OR CHANNELL AND HAVE: ANSI/SCTE 77 TIER 22 RATING (SEE NOTE 3) AND PROBE HOLE RECESSED 5/8" TO ALLOW FOR FLUSH MOUNT OF READER
2. METER AND READER SUPPLIED AND INSTALLED BY TMWA.
3. FOR NON-DELIBERATE TRAFFIC AREAS USE 13" X 24" ANSI/SCTE 77 TIER 22 BOX AND COVER. FOR DELIBERATE TRAFFIC AREAS USE 13" X 24" ENCLOSURE APPROVED FOR TRAFFIC RATED H/20 LOADING AND REMOTE READER ENCLOSURE. SEE DETAIL 10K-17 AND 10K-19.
4. TOP OF METER ENCLOSURE SHALL BE SET 0.2 FEET ABOVE HIGHEST FINISHED GRADE SURROUNDING ENCLOSURE WITHIN LANDSCAPED AREAS, AND SHALL BE SET FLUSH WITH SURROUNDING FINISH GRADE IN PAVED AREAS. ENCLOSURE MAY BE ONE PIECE 24" IN HEIGHT OR BE 12" ENCLOSURE WITH A 12" RISER.
5. ENCLOSURE TO BE BACKFILLED WITH WATER PIPE BEDDING SAND ONLY, SEE SECTION 5, TRENCH BEDDING & BACKFILL.
6. 4' X 4' INSULATING BLANKET TO BE INSTALLED ABOVE METER AND BELOW READER.
7. IF SERVICE LINE IS IRON PIPE, GALVANIZED OR BARE STEEL, INSTALL A DIELECTRIC UNION ON THE SETTER. USE A MALE ADAPTER TO CONNECT THE SERVICE LINE. COAT THE ADAPTER AND ONE FOOT OF SERVICE LINE WITH MASTIC.
8. UPON AUTHORITY APPROVAL 18" SETTER MAY BE REPLACED WITH TALLER SETTERS.
9. CONTRACTOR TO INSTALL IDLER WITH ALL SETTERS.
10. CONTRACTOR TO INSTALL SOLID PLUG IN PROBE HOLE OF LID.
11. ALL COMPONENTS IN CONTACT WITH WATER SHALL BE NSF-61 CERTIFIED.



DATE

6/2004

REV

5/2024

APPENDIX 10K  
WATER METERS - SMALL  
RETROFIT INSTALLATION  
1" SINGLE SERVICE LINE  
FOR 3/4" SETTER, METER  
AND READER

DRAWING NUMBER

10K-12

LID SHALL BE TIER 22 POLYMER CONCRETE OR NON-CONCRETE, AND HAVE A SINGLE PROBE HOLE RECESSED 5/8" FOR READER. READER NOT SHOWN.

SEE NOTE 4 FOR HEIGHT OF METER ENCLOSURE

16" FROM SETTER TO BOTTOM OF ENCLOSURE

TIER 22 RATED 13" X 24" ENCLOSURE MIN. INSIDE DIMENSION AT METER SHALL BE 14" X 23 3/4"

1" X 18" SETTER WITH MIP ENDS, FULL PORT ANGLE BALL VALVE AND IDLER.

SERVICE COUPLING BASED ON EXISTING SERVICE SIZE X 1" FIP

2 - 2"x 6"x 30" REDWOOD

EXISTING SERVICE PIPE

FROM WATER MAIN

WATER METER AND READER INSTALLED BY TMWA

1" TYPE "K" COPPER EXTENSION TO CUSTOMER CONNECTION (24" MAX LENGTH)

TO POINT OF USE

SEE NOTE 7

PUBLIC UTILITY EASEMENT

#### NOTES:

- COVER SHALL BE HUBBELL, JENSEN PRECAST, OLDCASTLE, OR CHANNELL AND HAVE: ANSI/SCTE 77 TIER 22 RATING (SEE NOTE 3) AND PROBE HOLE RECESSED 5/8" TO ALLOW FOR FLUSH MOUNT OF READER
- METER AND READER SUPPLIED AND INSTALLED BY TMWA.
- FOR NON-DELIBERATE TRAFFIC AREAS USE 13" X 24" ANSI/SCTE 77 TIER 22 BOX AND COVER. FOR DELIBERATE TRAFFIC AREAS USE 13" X 24" ENCLOSURE APPROVED FOR TRAFFIC RATED H/20 LOADING AND REMOTE READER ENCLOSURE. SEE DETAIL 10K-17 AND 10K-19.
- TOP OF METER ENCLOSURE SHALL BE SET 0.2 FEET ABOVE HIGHEST FINISHED GRADE SURROUNDING ENCLOSURE WITHIN LANDSCAPED AREAS, AND SHALL BE SET FLUSH WITH SURROUNDING FINISH GRADE IN PAVED AREAS. ENCLOSURE MAY BE ONE PIECE 24" IN HEIGHT OR BE 12" ENCLOSURE WITH A 12" RISER.
- ENCLOSURE TO BE BACKFILLED WITH WATER PIPE BEDDING SAND ONLY, SEE SECTION 5, TRENCH BEDDING & BACKFILL.
- 4' X 4' INSULATING BLANKET TO BE INSTALLED ABOVE METER AND BELOW READER.
- IF SERVICE LINE IS IRON PIPE, GALVANIZED OR BARE STEEL, INSTALL A DIELECTRIC UNION ON THE SETTER. USE A MALE ADAPTER TO CONNECT THE SERVICE LINE. COAT THE ADAPTER AND ONE FOOT OF SERVICE LINE WITH MASTIC.
- UPON AUTHORITY APPROVAL 18" SETTER MAY BE REPLACED WITH TALLER SETTERS.
- CONTRACTOR TO INSTALL IDLER WITH ALL SETTERS.
- CONTRACTOR TO INSTALL SOLID PLUG IN PROBE HOLE OF LID.
- ALL COMPONENTS IN CONTACT WITH WATER SHALL BE NSF-61 CERTIFIED.



DATE

6/2004

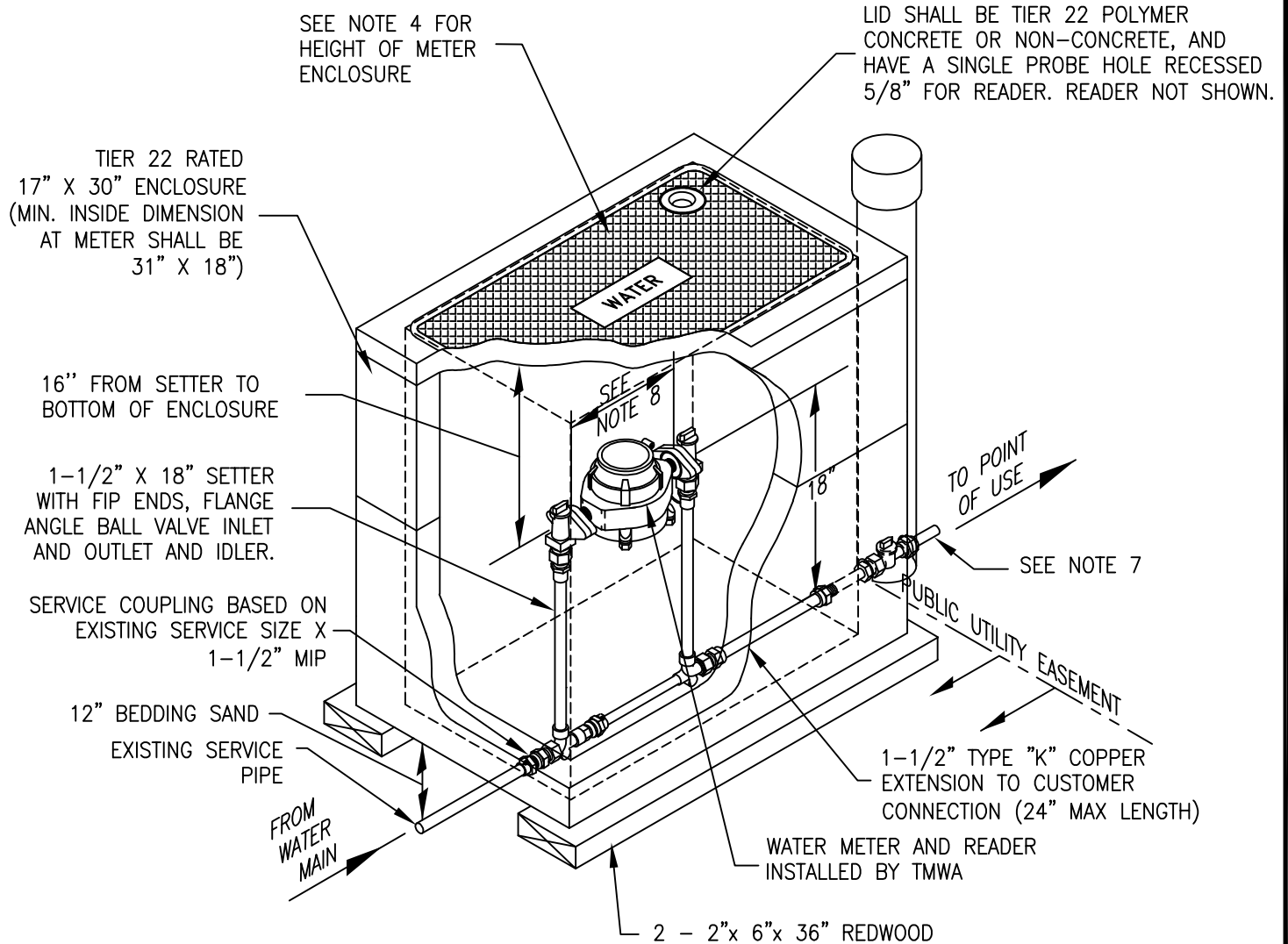
REV

5/2024

APPENDIX 10K  
WATER METERS - SMALL  
RETROFIT INSTALLATION  
1-1/4" SINGLE SERVICE LINE  
FOR 1" SETTER, METER  
AND READER

DRAWING NUMBER

10K-13



**NOTES:**

1. COVER SHALL BE HUBBELL, JENSEN PRECAST, OLDCASTLE, OR CHANNELL AND HAVE:  
ANSI/SCTE 77 TIER 22 RATING (SEE NOTE 3);  
WEIGHT OF LESS THAN 50 POUNDS (UNLESS APPROVED BY THE AUTHORITY); AND  
PROBE HOLE RECESSED 5/8" TO ALLOW FOR FLUSH MOUNT OF READER
2. METER AND READER SUPPLIED AND INSTALLED BY TMWA.
3. FOR NON-DELIBERATE TRAFFIC AREAS USE 17" X 30" ANSI/SCTE 77 TIER 22 BOX AND COVER. FOR DELIBERATE TRAFFIC AREAS USE 17" X 30" ENCLOSURE APPROVED FOR TRAFFIC RATED H/20 LOADING AND REMOTE READER ENCLOSURE. SEE DETAIL 10K-18 AND 10K-19.
4. TOP OF METER ENCLOSURE SHALL BE SET 0.2 FEET ABOVE HIGHEST FINISHED GRADE SURROUNDING ENCLOSURE WITHIN LANDSCAPED AREAS, AND SHALL BE SET FLUSH WITH SURROUNDING FINISH GRADE IN PAVED AREAS. ENCLOSURE MAY BE ONE PIECE 24" IN HEIGHT OR BE 12" ENCLOSURE WITH A 12" RISER.
5. ENCLOSURE TO BE BACKFILLED WITH WATER PIPE BEDDING SAND ONLY, SEE SECTION 5, TRENCH BEDDING & BACKFILL.
6. 4' X 4' INSULATING BLANKET TO BE INSTALLED ABOVE METER AND BELOW READER.
7. IF SERVICE LINE IS IRON PIPE, GALVANIZED OR BARE STEEL, INSTALL A DIELECTRIC UNION ON THE SETTER. USE A MAKE ADAPTER TO CONNECT THE SERVICE LINE. COAT THE ADAPTER AND ONE FOOT OF SERVICE LINE WITH MASTIC.
8. DISTANCE BETWEEN FLANGES SHALL BE 13.25".
9. UPON AUTHORITY APPROVAL 18" SETTER MAY BE REPLACED WITH TALLER SETTERS.
10. CONTRACTOR TO INSTALL IDLER WITH ALL SETTERS.
11. CONTRACTOR TO INSTALL SOLID PLUG IN PROBE HOLE OF LID.
12. ALL COMPONENTS IN CONTACT WITH WATER SHALL BE NSF-61 CERTIFIED.

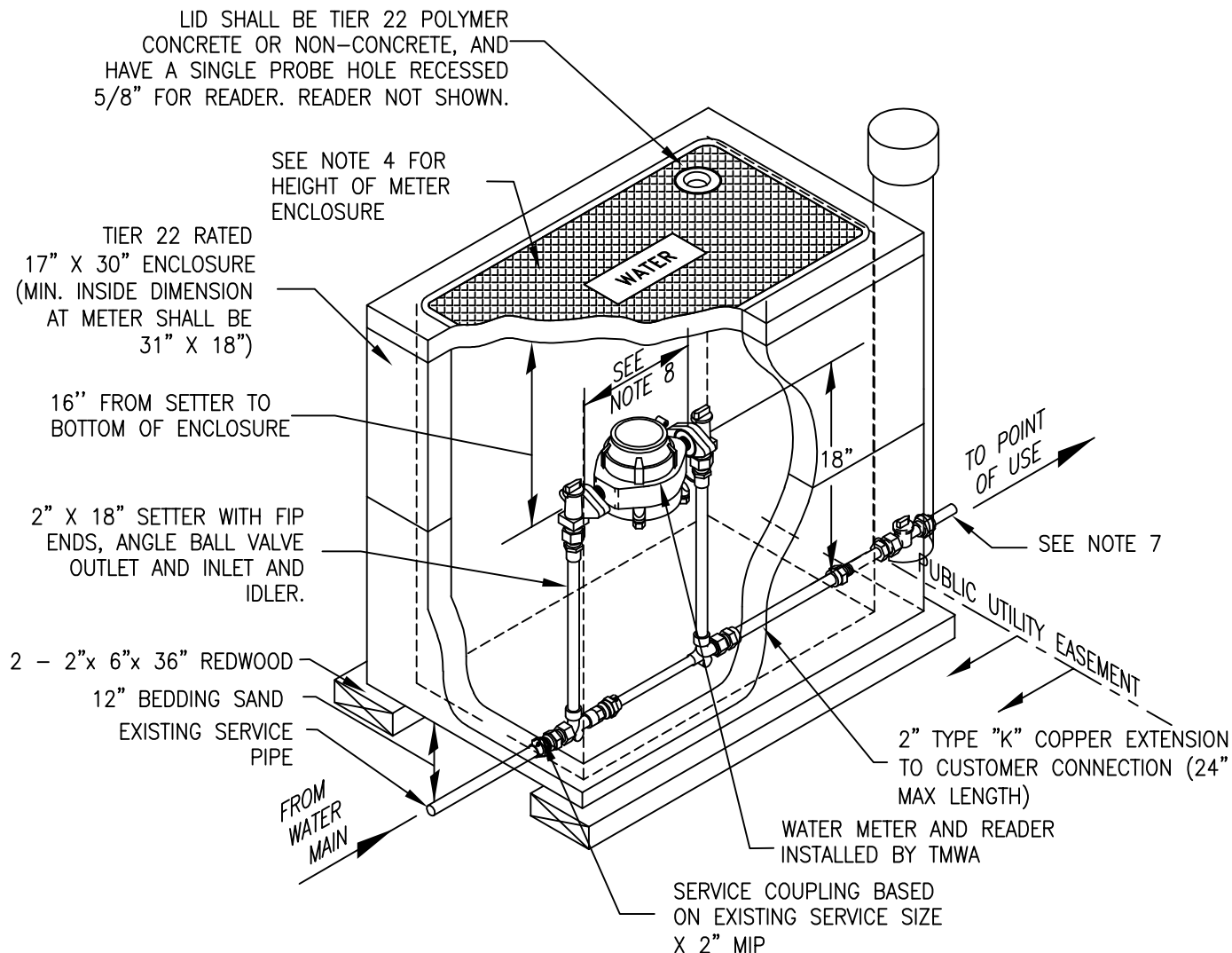


DATE
6/2004
REV
5/2024

APPENDIX 10K  
WATER METERS - SMALL  
RETROFIT INSTALLATION  
1-1/2" SINGLE SERVICE LINE  
FOR 1-1/2" SETTER, METER  
AND READER

DRAWING NUMBER

10K-14



#### NOTES:

1. COVER SHALL BE HUBBELL, JENSEN PRECAST, OLDCASTLE, OR CHANNELL AND HAVE: ANSI/SCTE 77 TIER 22 RATING (SEE NOTE 3); WEIGHT OF LESS THAN 50 POUNDS (UNLESS APPROVED BY THE AUTHORITY); AND PROBE HOLE RECESSED 5/8" TO ALLOW FOR FLUSH MOUNT OF READER
2. METER AND READER SUPPLIED AND INSTALLED BY TMWA.
3. FOR NON-DELIBERATE TRAFFIC AREAS USE 17" X 30" ANSI/SCTE 77 TIER 22 BOX AND COVER. FOR DELIBERATE TRAFFIC AREAS USE 17" X 30" ENCLOSURE APPROVED FOR TRAFFIC RATED H/20 LOADING AND REMOTE READER ENCLOSURE. SEE DETAIL 10K-18 10K-19.
4. TOP OF METER ENCLOSURE SHALL BE SET 0.2 FEET ABOVE HIGHEST FINISHED GRADE SURROUNDING ENCLOSURE WITHIN LANDSCAPED AREAS, AND SHALL BE SET FLUSH WITH SURROUNDING FINISH GRADE IN PAVED AREAS. ENCLOSURE MAY BE ONE PIECE 24" IN HEIGHT OR BE 12" ENCLOSURE WITH A 12" RISER.
5. ENCLOSURE TO BE BACKFILLED WITH WATER PIPE BEDDING SAND ONLY, SEE SECTION 5, TRENCH BEDDING & BACKFILL.
6. 4' X 4' INSULATING BLANKET TO BE INSTALLED ABOVE METER AND BELOW READER.
7. IF SERVICE LINE IS IRON PIPE, GALVANIZED OR BARE STEEL, INSTALL A DIELECTRIC UNION ON THE SETTER. USE A MALE ADAPTER TO CONNECT THE SERVICE LINE. COAT THE ADAPTER AND ONE FOOT OF SERVICE LINE WITH MASTIC.
8. DISTANCE BETWEEN FLANGES SHALL BE 17.25".
9. UPON AUTHORITY APPROVAL 18" SETTER MAY BE REPLACED WITH TALLER SETTERS.
10. CONTRACTOR TO INSTALL IDLER WITH ALL SETTERS.
11. CONTRACTOR TO INSTALL SOLID PLUG IN PROBE HOLE OF LID.
12. ALL COMPONENTS IN CONTACT WITH WATER SHALL BE NSF-61 CERTIFIED.



DATE

6/2004

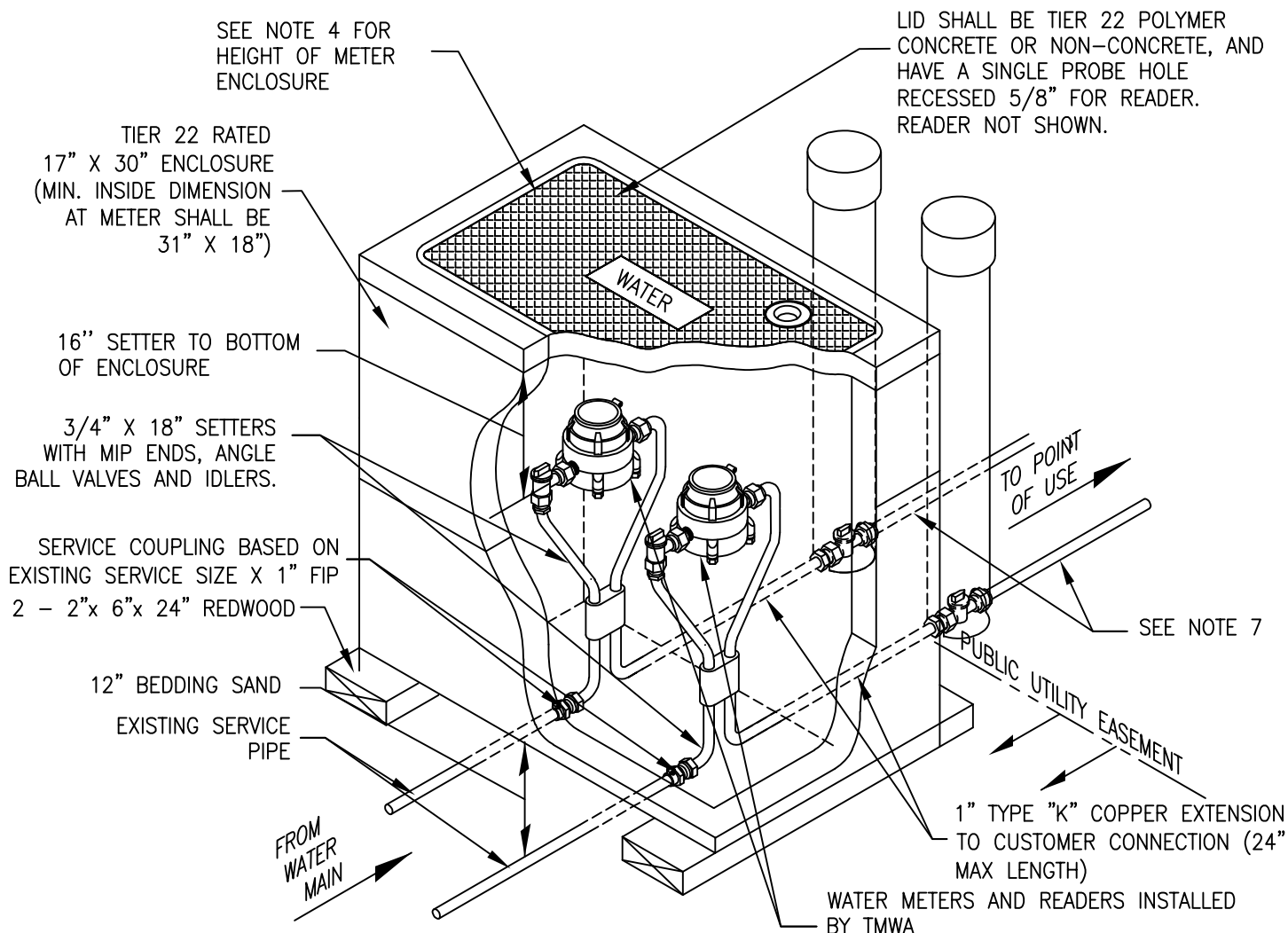
REV

5/2024

APPENDIX 10K  
WATER METERS - SMALL  
RETROFIT INSTALLATION  
2" SINGLE SERVICE LINE  
FOR 2" SETTER, METER  
AND READER

DRAWING NUMBER

10K-15



#### NOTES:

- COVER SHALL BE HUBBELL, JENSEN PRECAST, OLDCASTLE, OR CHANNELL AND HAVE:  
ANSI/SCTE 77 TIER 22 RATING (SEE NOTE 3);  
WEIGHT OF LESS THAN 50 POUNDS (UNLESS APPROVED BY THE AUTHORITY); AND  
PROBE HOLE RECESSED 5/8" TO ALLOW FOR FLUSH MOUNT OF READER
- METER AND READER SUPPLIED AND INSTALLED BY TMWA.
- FOR NON-DELIBERATE TRAFFIC AREAS USE 17" X 30" ANSI/SCTE 77 TIER 22 BOX AND COVER. FOR DELIBERATE TRAFFIC AREAS USE 17" X 30" ENCLOSURE APPROVED FOR TRAFFIC RATED H/20 LOADING AND REMOTE READER ENCLOSURE. SEE DETAIL 10K-18 AND 10K-19.
- TOP OF METER ENCLOSURE SHALL BE SET 0.2 FEET ABOVE HIGHEST FINISHED GRADE SURROUNDING ENCLOSURE WITHIN LANDSCAPED AREAS, AND SHALL BE SET FLUSH WITH SURROUNDING FINISH GRADE IN PAVED AREAS. ENCLOSURE MAY BE ONE PIECE 24" IN HEIGHT OR BE 12" ENCLOSURE WITH A 12" RISER.
- ENCLOSURE TO BE BACKFILLED WITH WATER PIPE BEDDING SAND ONLY, SEE SECTION 5, TRENCH BEDDING & BACKFILL.
- 4' X 4' INSULATING BLANKET TO BE INSTALLED ABOVE METER AND BELOW READER.
- IF SERVICE LINE IS IRON PIPE, GALVANIZED OR BARE STEEL, INSTALL A DIELECTRIC UNION ON THE SETTER. USE A MALE ADAPTER TO CONNECT THE SERVICE LINE. COAT THE ADAPTER AND ONE FOOT OF SERVICE LINE WITH MASTIC.
- UPON AUTHORITY APPROVAL 18" SETTER MAY BE REPLACED WITH TALLER SETTERS.
- CONTRACTOR TO INSTALL IDLER WITH ALL SETTERS.
- CONTRACTOR TO INSTALL SOLID PLUG IN PROBE HOLE OF LID.
- ALL COMPONENTS IN CONTACT WITH WATER SHALL BE NSF-61 CERTIFIED.



DATE

6/2004

REV

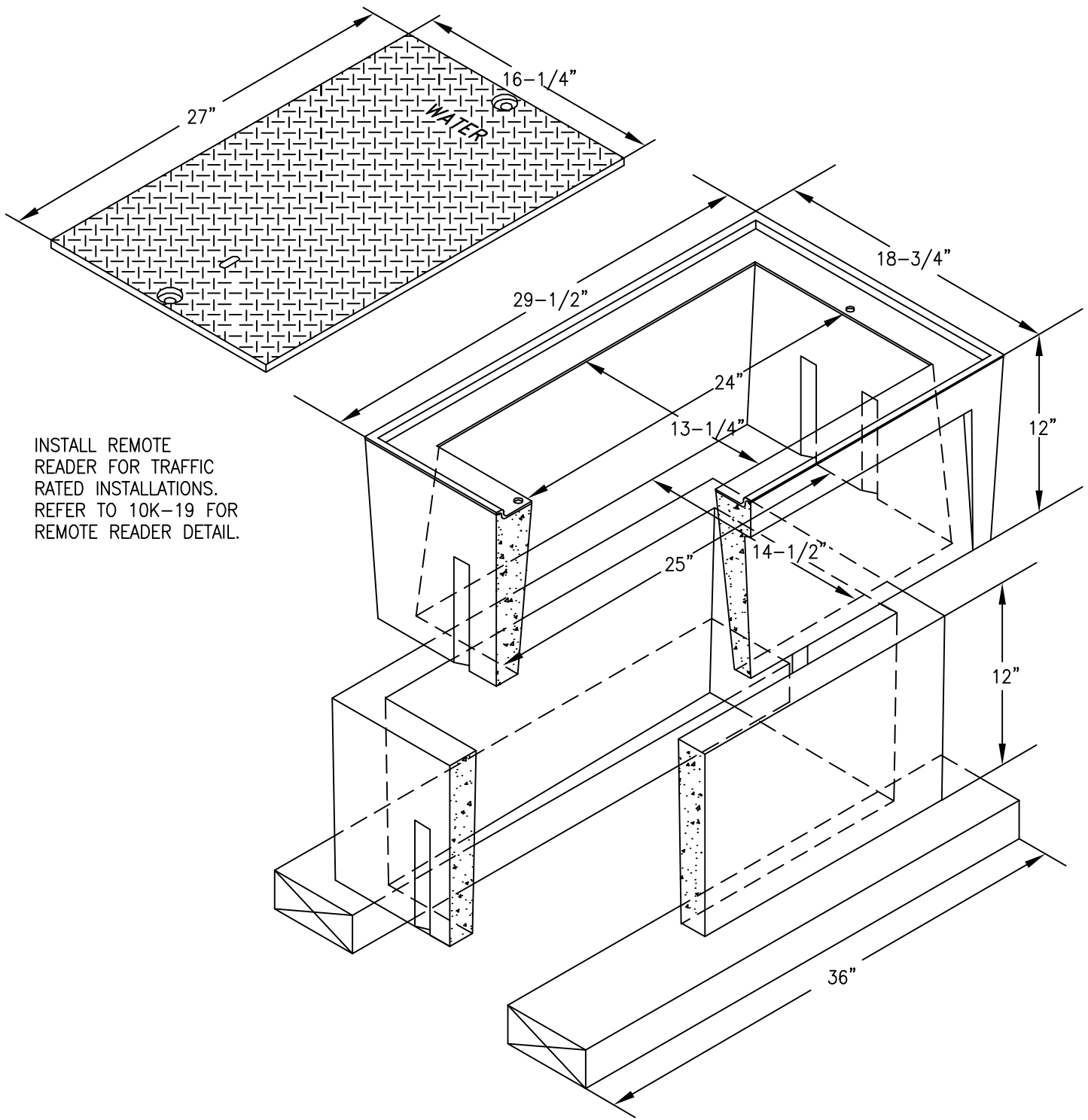
5/2024

APPENDIX 10K  
WATER METERS - SMALL  
RETROFIT INSTALLATION  
1" DUAL SERVICE LINE  
FOR 3/4" SETTER, METER  
AND READER

DRAWING NUMBER

10K-16





INSTALL REMOTE  
READER FOR TRAFFIC  
RATED INSTALLATIONS.  
REFER TO 10K-19 FOR  
REMOTE READER DETAIL.

#### MATERIAL LIST

QTY.	DESCRIPTION
1.0	ENCLOSURE 13X24 TRAFFIC H/20 RATED
1.0	COVER 13X24 TRAFFIC H/20 RATED - MARKED "WATER"
1.0	EXTENSION BOX 13X24 TRAFFIC H/20 RATED
2.0	BOARD - REDWOOD 2" X 6" X 36"



DATE

6/2004

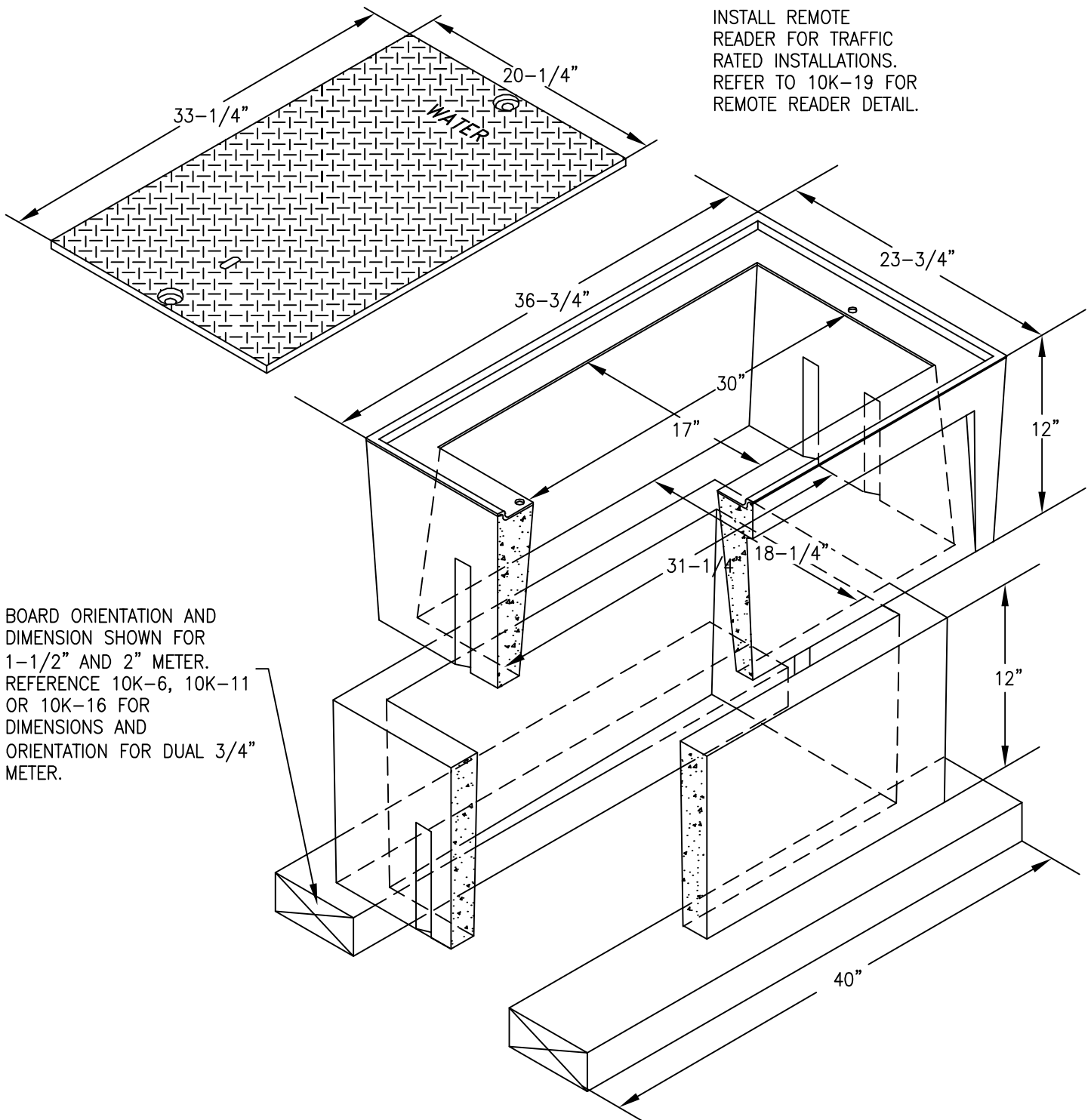
REV

5/2024

APPENDIX 10K  
WATER METERS - SMALL  
NEW INSTALLATION  
13x24 ENCLOSURE  
TRAFFIC RATED

DRAWING NUMBER

10K-17



# MATERIAL LIST

QTY.	DESCRIPTION
1.0	ENCLOSURE 17X30 TRAFFIC H/20 RATED
1.0	COVER 17X30 TRAFFIC H/20 RATED - MARKED "WATER"
1.0	EXTENSION BOX 17X30 TRAFFIC H/20 RATED
2.0	BOARD - REDWOOD 2" X 6" X 40"

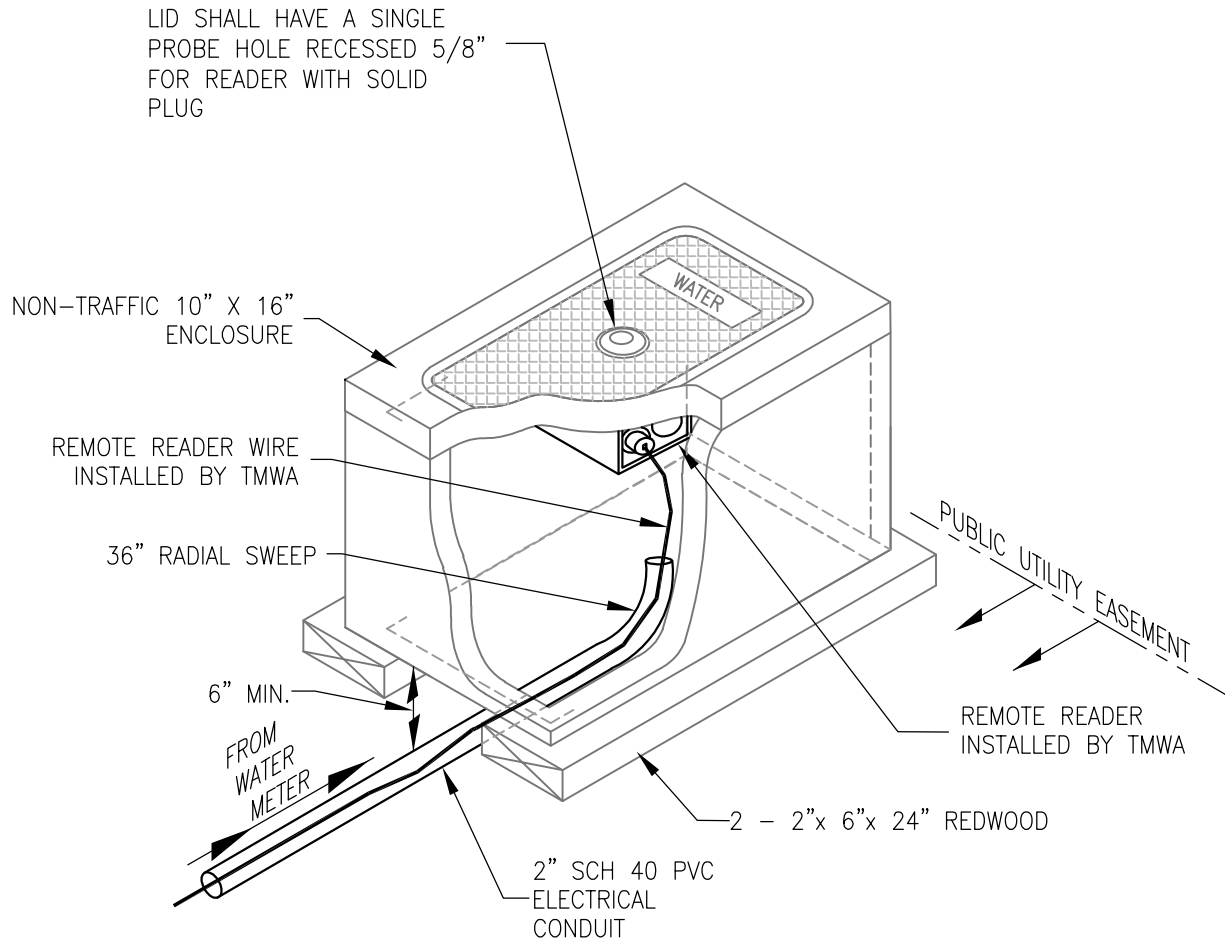


DATE  
6/2004  
REV  
5/2024

APPENDIX 10K  
WATER METERS - SMALL  
NEW INSTALLATION  
17X30 ENCLOSURE  
TRAFFIC RATED

DRAWING NUMBER

10K-18



**NOTES:**

1. COVER SHALL HAVE:  
ANSI/SCTE 77 TIER 8 RATING AND  
PROBE HOLE RECESSED 5/8" TO ALLOW FOR FLUSH MOUNT OF READER
2. SEE 10K-17 OR 10K-18 FOR TRAFFIC RATED BOX AND LID INSTALLATION.
3. REMOTE READER AND WIRE SUPPLIED AND INSTALLED BY TMWA.
4. ENCLOSURE SHALL BE LOCATED BEHIND CURB/SIDEWALK IN A LANDSCAPED AREA OR GREATER THAN 3- FEET AWAY FROM DRIVEWAY OR TRAFFIC AREA.
5. TOP OF METER ENCLOSURE SHALL BE SET 0.2 FEET ABOVE HIGHEST FINISHED GRADE SURROUNDING ENCLOSURE WITHIN LANDSCAPED AREAS, AND SHALL BE SET FLUSH WITH SURROUNDING FINISH GRADE IN PAVED AREAS.
6. ENCLOSURE TO BE BACKFILLED WITH WATER PIPE BEDDING SAND ONLY, SEE SECTION 5, TRENCH BEDDING & BACKFILL.
7. CONTRACTOR TO INSTALL 2" ELECTRICAL CONDUIT FROM METER ENCLOSURE TO REMOTE READER ENCLOSURE.
8. A TAPERED POLYETHYLENE PLUG WITH ATTACHMENT EYE SHALL BE USED TO TEMPORARILY PLUG CONDUIT ENDS. IF CONDUIT IS LONGER THAN 15' IN LENGTH, A PULL STRING SHALL BE INSTALLED WITHIN CONDUIT.



DATE

5/2024

REV

APPENDIX 10K  
WATER METERS  
NEW INSTALLATION  
REMOTE READER  
10X16 ENCLOSURE

DRAWING NUMBER

10K-19