



REFERENCE: BASE MAP, WASHOE COUNTY TECHNOLOGY SERVICES, REGIONAL DEPARTMENT (GIS), WWW.WASHOECOUNTY.US/GIS, ACCESSED AUGUST 22,2014

NORTH
SCALE 1"=300'

CME CONSTRUCTION
MATERIALS
ENGINEERS INC.

6980 Sierra Center Parkway, Suite 90
Reno, NV 89511

TMWA
NORTH VALLEYS WATERLINE ALIGNMENT
FIELD EXPLORATION LOCATION MAP
LEMMON VALLEY

PROJECT NO.: 1660

DATE: 7/31/2014

LEGEND

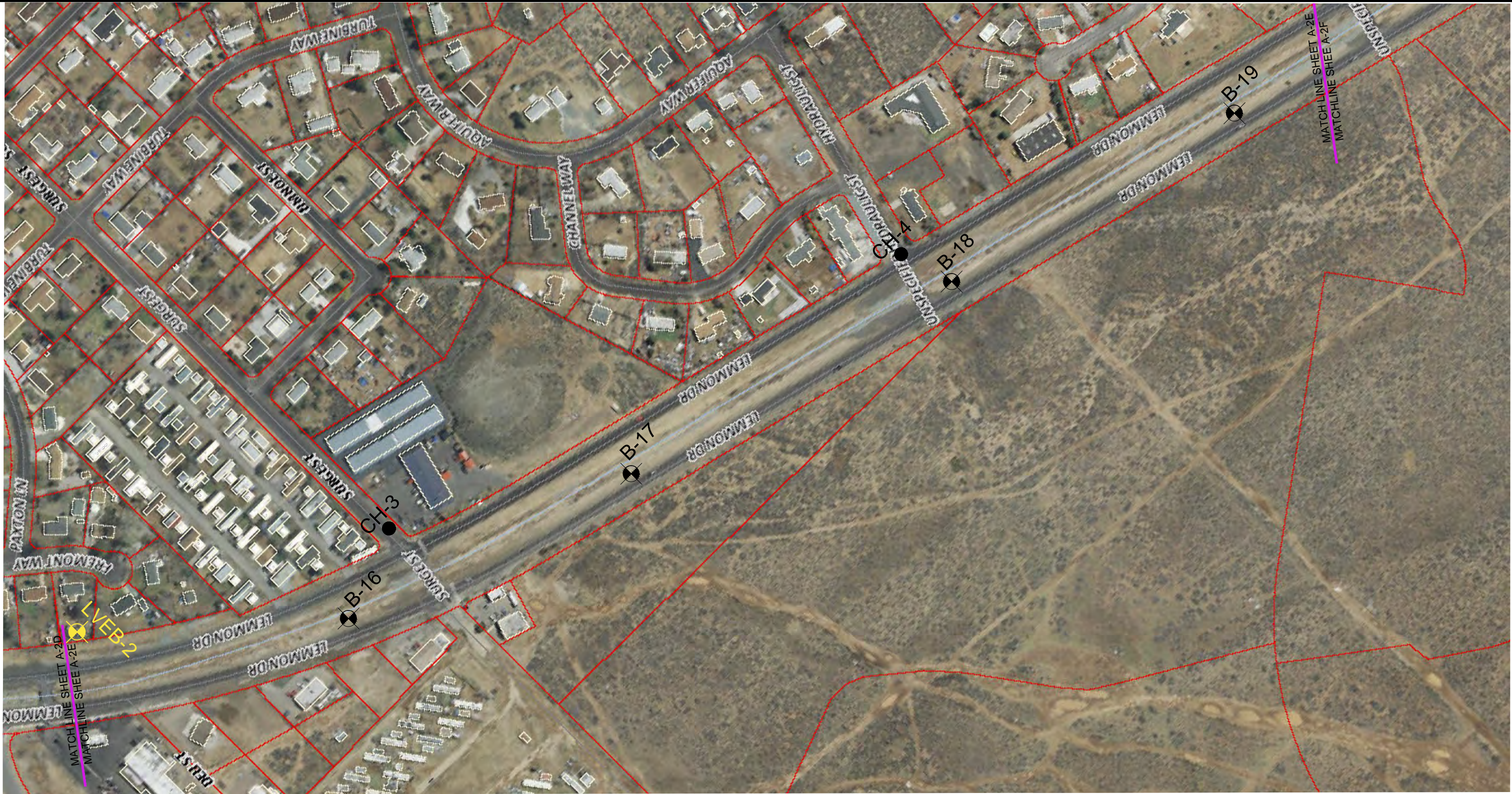
- APPROXIMATE BORING LOCATION THIS INVESTIGATION (2014)
- APPROXIMATE BORING LOCATION PREVIOUS GEOTECHNICAL INVESTIGATION FOR LEMMON VALLEY ESTATES #4

- APPROXIMATE COREHOLE LOCATION (2014)
- APPROXIMATE BORING LOCATION PREVIOUS GEOTECHNICAL INVESTIGATION FOR LEMMON VALLEY ESTATES

PLATE

A-2d

V:\Active\1660\AutoCAD\field exploration location map 11-4-14.dwg



REFERENCE: BASE MAP, WASHOE COUNTY TECHNOLOGY SERVICES, REGIONAL DEPARTMENT (GIS), WWW.WASHOECOUNTY.US/GIS, ACCESSED AUGUST 22,2014

NORTH
SCALE 1"=300'

CME

CONSTRUCTION
MATERIALS
ENGINEERS INC.

6980 Sierra Center Parkway, Suite 90
Reno, NV 89511

TMWA
NORTH VALLEYS WATERLINE ALIGNMENT
FIELD EXPLORATION LOCATION MAP
LEMMON VALLEY

PROJECT NO.: 1660 DATE: 7/31/2014

LEGEND

B-1

APPROXIMATE BORING LOCATION THIS INVESTIGATION (2014)

LVEB-1

APPROXIMATE BORING LOCATION PREVIOUS GEOTECHNICAL INVESTIGATION FOR LEMMON VALLEY ESTATES

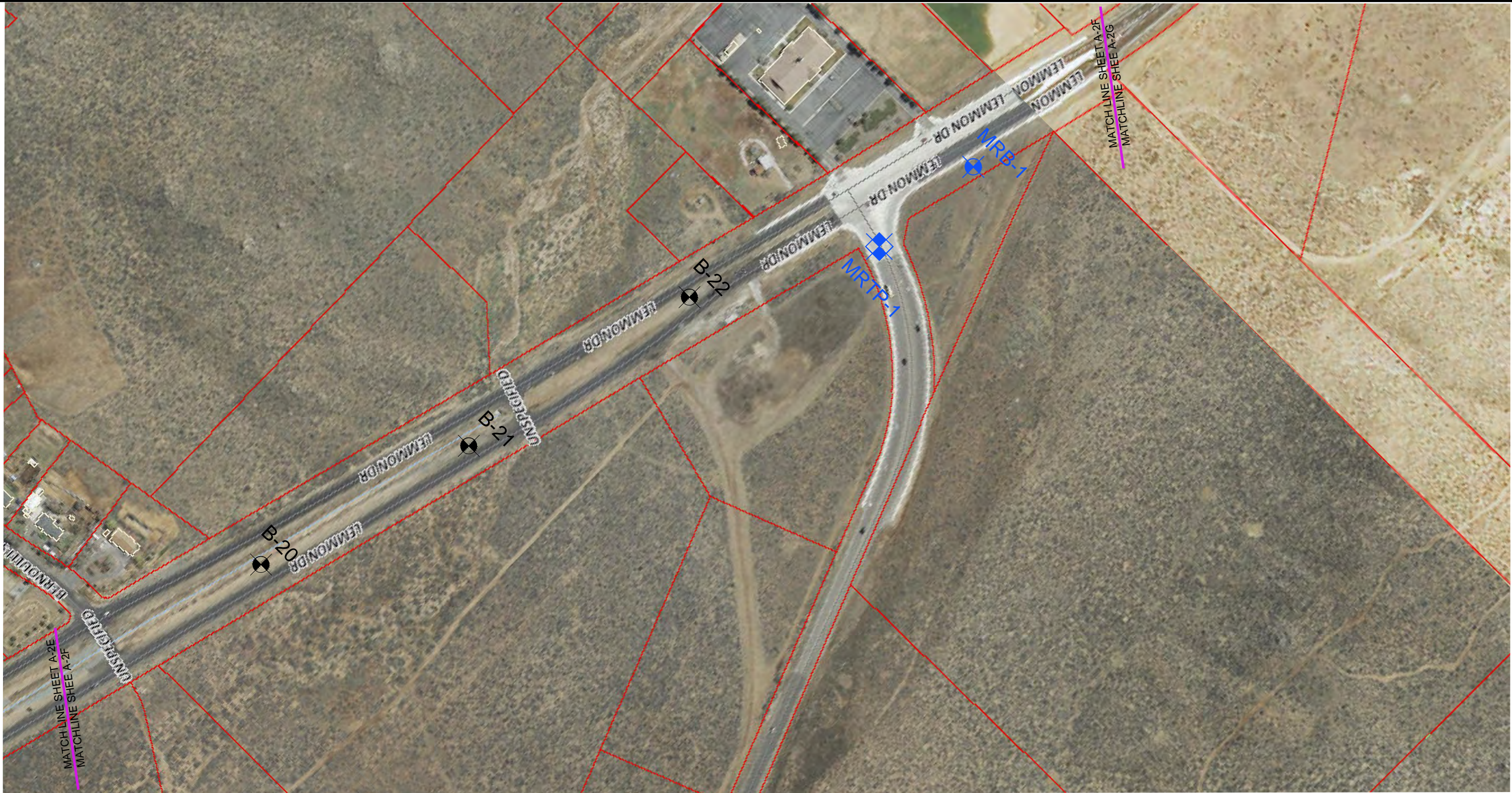
CH-1

APPROXIMATE COREHOLE LOCATION (2014)


PLATE

A-2e

V:\Active\1660\AutoCAD\field exploration location map 11-4-14.dwg



REFERENCE: BASE MAP, WASHOE COUNTY TECHNOLOGY SERVICES, REGIONAL DEPARTMENT (GIS), WWW.WASHOECOUNTY.US/GIS, ACCESSED AUGUST 22,2014



**CONSTRUCTION
MATERIALS
ENGINEERS INC.**
6980 Sierra Center Parkway, Suite 90
Reno, NV 89511

TMWA
NORTH VALLEYS WATERLINE ALIGNMENT
FIELD EXPLORATION LOCATION MAP
LEMMON VALLEY

PROJECT NO.: 1660 DATE: 7/31/2014

LEGEND




-  APPROXIMATE BORING LOCATION THIS INVESTIGATION (2014)
-  APPROXIMATE BORING LOCATION PREVIOUS GEOTECHNICAL INVESTIGATION FOR MILITARY ROAD
-  APPROXIMATE TEST PIT LOCATION PREVIOUS GEOTECHNICAL INVESTIGATION FOR MILITARY ROAD

PLATE
A-2f

V:\Active\1660\AutoCAD\field exploration location map 11-4-14.dwg



REFERENCE: BASE MAP, WASHOE COUNTY TECHNOLOGY SERVICES, REGIONAL DEPARTMENT (GIS), WWW.WASHOECOUNTY.US/GIS, ACCESSED AUGUST 22, 2014

NORTH
SCALE 1"=300'

CME CONSTRUCTION MATERIALS ENGINEERS INC.
6980 Sierra Center Parkway, Suite 90
Reno, NV 89511

TMWA
NORTH VALLEYS WATERLINE ALIGNMENT
FIELD EXPLORATION LOCATION MAP
LEMMON VALLEY
PROJECT NO.: 1660
DATE: 7/31/2014

LEGEND

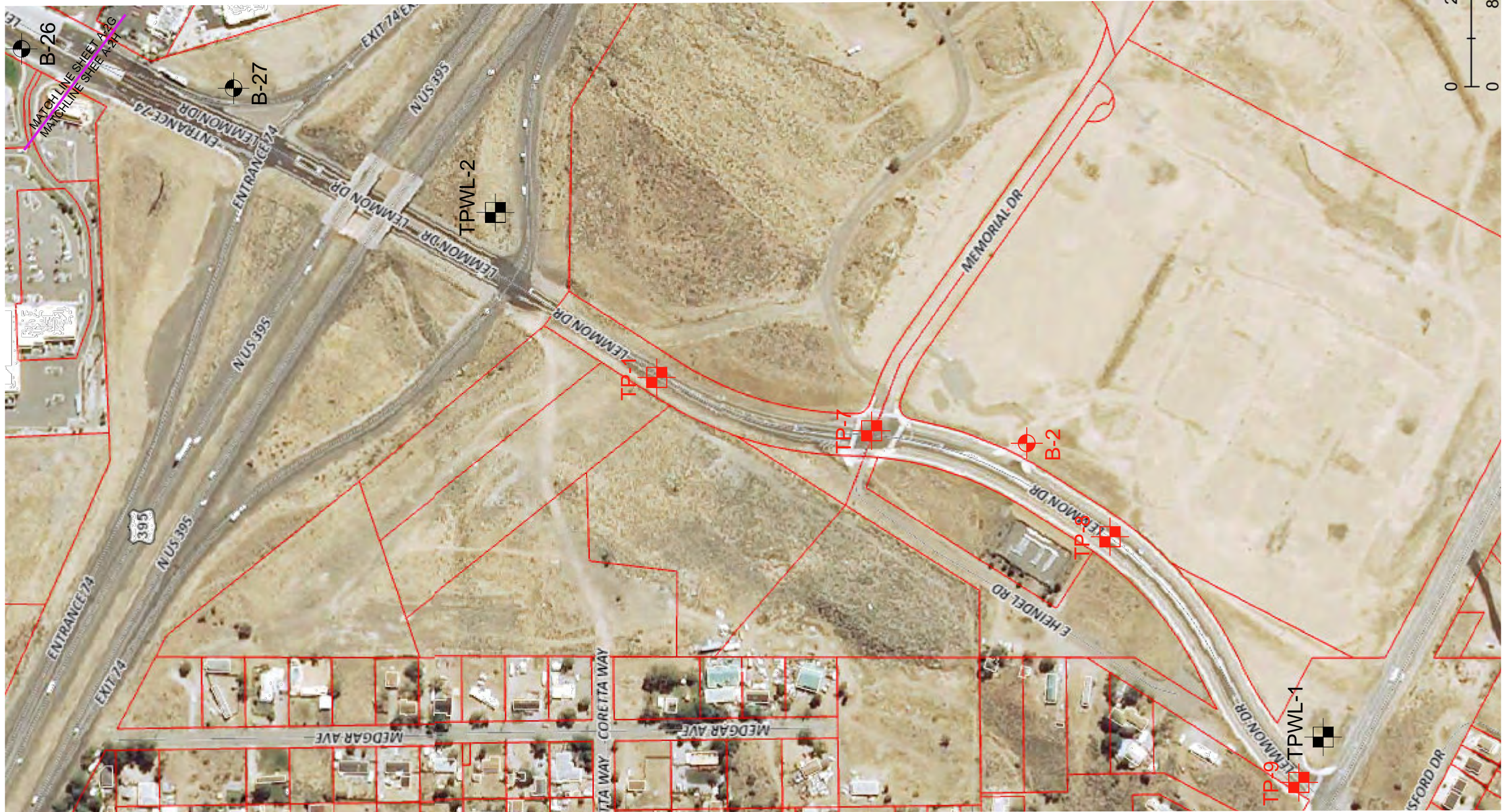
- APPROXIMATE BORING LOCATION THIS INVESTIGATION (2014)
- APPROXIMATE LOCATION OF MAPPED CUT SLOPE (CS-1) PROFILE

APPROXIMATE TEST PIT LOCATION PREVIOUS GEOTECHNICAL INVESTIGATION FOR LEMMON DRIVE/SKY VISTA PARKWAY/BUCK DRIVE

PLATE

A-2g

V:\Active\1660\AutoCAD\field exploration location map 11-4-14.dwg



REFERENCE: BASE MAP, WASHOE COUNTY TECHNOLOGY SERVICES, REGIONAL DEPARTMENT (GIS), WWW.WASHOECOUNTY.US/GIS, ACCESSED AUGUST 22,2014

NORTH
SCALE 1"=300'

CME **CONSTRUCTION MATERIALS ENGINEERS INC.**
6980 Sierra Center Parkway, Suite 90
Reno, NV 89511

TMWA
NORTH VALLEYS WATERLINE ALIGNMENT
FIELD EXPLORATION LOCATION MAP
LEMMON VALLEY

PROJECT NO.: 1660

DATE: 7/31/2014

LEGEND

- APPROXIMATE BORING LOCATION CURRENT INVESTIGATION (2014)
- APPROXIMATE TEST PIT LOCATION CURRENT INVESTIGATION (2014)

- APPROXIMATE TEST PIT LOCATION PREVIOUS GEOTECHNICAL INVESTIGATION FOR LEMMON DRIVE EXTENSION
- APPROXIMATE BORING LOCATION PREVIOUS GEOTECHNICAL INVESTIGATION FOR LEMMON DRIVE EXTENSION

PLATE

A-2h