



Addendum No. 1

Sun Valley 4 Pump Station Abandonment and Zone 3 to Zone 4 PRS Addition

TMWA Bid No.: 2016-027

TMWA Capital Project No.: 13-0017

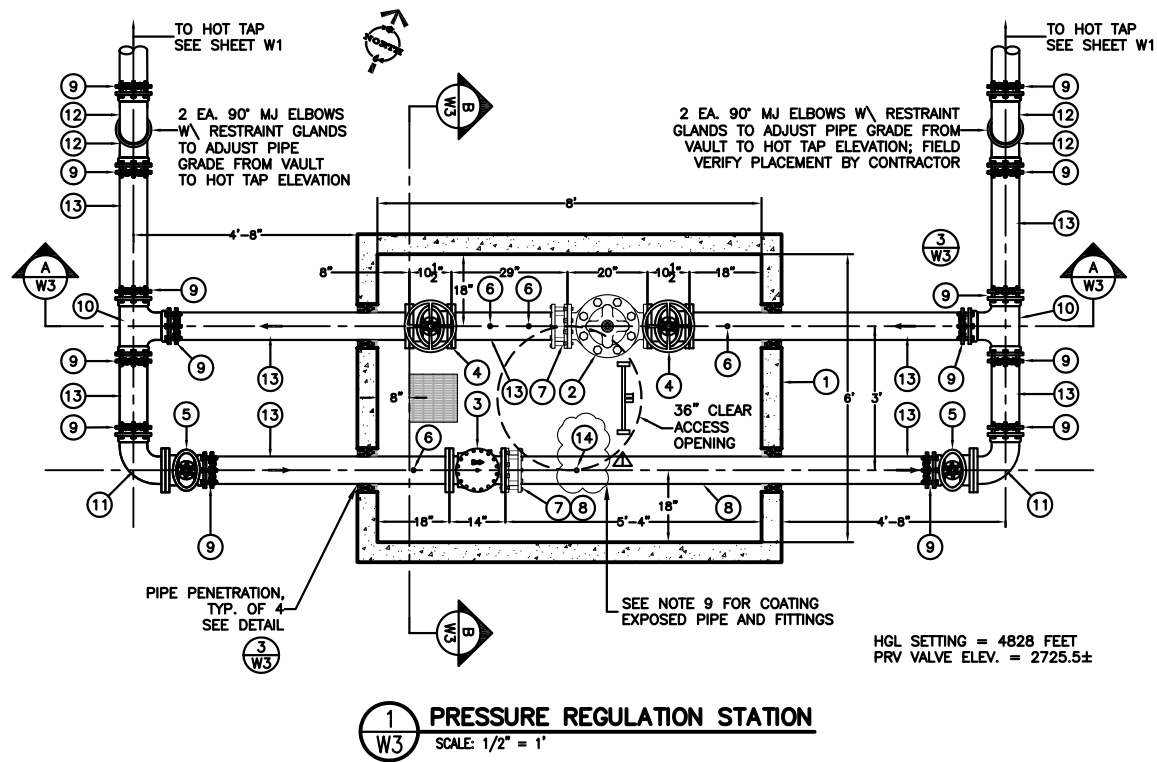
October 10, 2016

The following information, clarifications, changes and modifications are by reference incorporated into the bid documents for the above referenced project. Any work item or contract provision not changed or modified will remain in full force and effect. The bid date and time and construction schedule remain the same.

Contract Drawing Changes:

Replace W3 with the attached. A 2-inch outlet has been added to the interior vault piping per the revised W3 plan sheet included in this addendum.

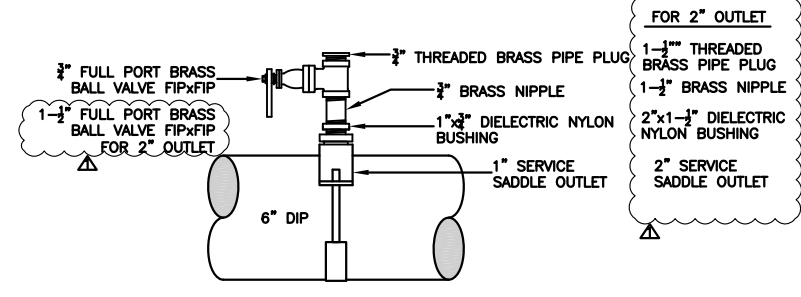
End of Addendum #1



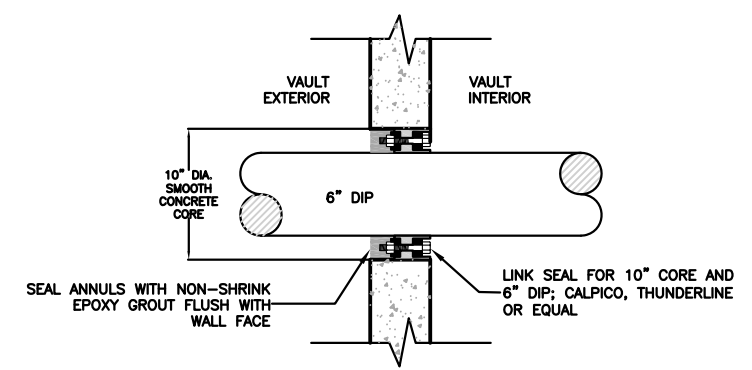
1 PRESSURE REGULATION STATION
SCALE: 1/2" = 1'

MAJOR MATERIALS		
ITEM No.	QTY.	DESCRIPTION
1	1	PRECAST CONCRETE VAULT, SEE NOTE 1
2	1	6" CIA-VAL PRESSURE REDUCING VALVE; SEE NOTE 2
3	1	6" SWING CHECK VALVE FLXFL; SEE TECH SPEC 15010
4	2	6" GATE VALVE FLXFL; SEE NOTE 3
5	2	6" GATE VALVE FLXFL WITH 2" OPERATING NUT
6	3	SADDLE TAP OUTLET ASSEMBLY; SEE DETAIL 2/W3
7	2	6" RESTRAINED FGA; SEE NOTE 4
8	5	ADJUSTABLE PIPE SUPPORT
9	18	MJ RESTRAINT GLAND
10	2	6" TEE MxMxM
11	2	6" 90° ELBOW MxMFL
12	4	6" 90° ELBOW MxMxM
13	-	6" DIP SPOOL; LENGTHS VARY; SEE NOTES 5 AND 6
14	1	2" SADDLE TAP OUTLET ASSEMBLY; SEE DETAIL 2/W3
15	-	

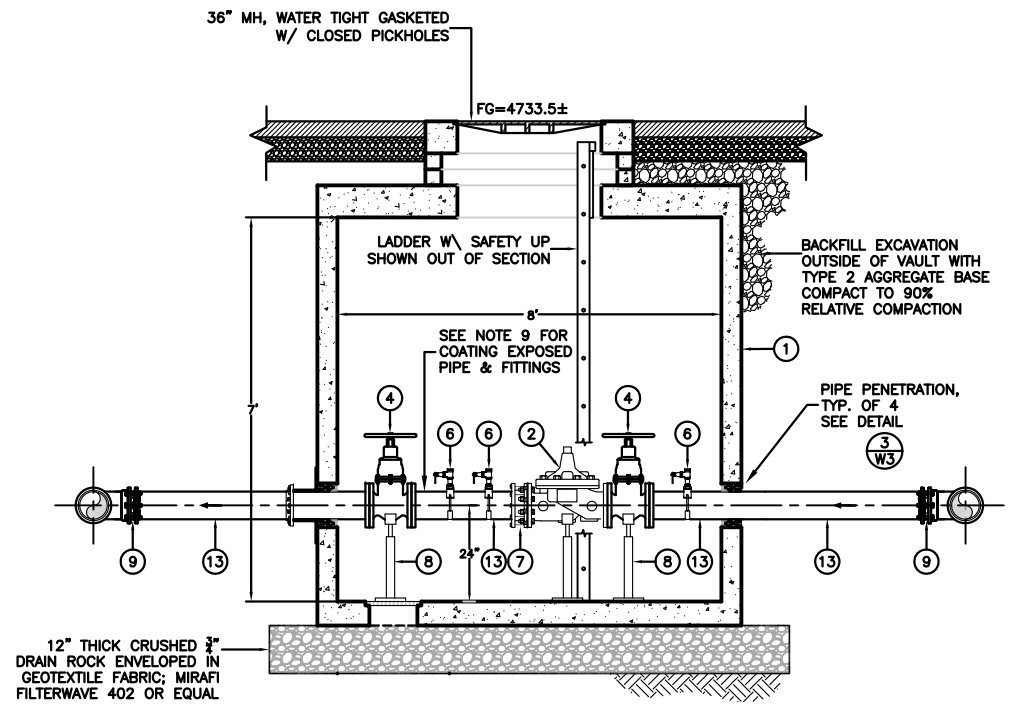
- MATERIAL AND CONSTRUCTION NOTES**
- VALVE VAULT - PRECAST CONCRETE VAULT, JENSEN 687U-7 OR EQUAL WITH 36" ACCESS OPENING RATED FOR HS20-44 TRAFFIC LOADING; COVER MARKED "T.M.W.A. WATER"; WITH 12" SQ. SUMP KNOCKOUT. WATERPROOFING - WATERSEAL HML 5000 OR EQUAL.
 - PRESSURE REDUCING VALVES - 6" CIA-VAL 90-01YB5YK PRESSURE REDUCING VALVE WITH X101 POSITION INDICATORS, DUCTILE IRON BODIES, SS TRIM, COPPER TUBES, EPOXY COATED, ANSI 150 CLASS FLANGES.
 - 6-INCH GATE VALVES INSIDE THE VAULT SHALL BE FURNISHED WITH HANDWHEELS.
 - FLANGE ADAPTER - ALL FLANGE ADAPTERS FOR DIP SHALL BE EBAA IRON SERIES 2100 MEGAFLLANGE-FLANGE ADAPTER OR EQUAL, UNLESS OTHERWISE SPECIFIED.
 - ALL DUCTILE IRON PIPE AND FITTINGS SHALL BE PRESSURE CLASS 350.
 - THE CONTRACTOR SHALL VERIFY ALL DIMENSIONS HEREON AND SHALL BE RESPONSIBLE FOR SHOP FABRICATING AND FIELD FITTING ALL DIP SPOOLS AND PIPE SECTIONS.
 - ALL FLANGE GASKETS SHALL BE RATED AT 250 PSI WORKING PRESSURE.
 - ALL MATERIALS NOT PER MATERIAL LIST AND MATERIAL NOTES SHALL REQUIRE SUBMITTAL TO T.M.W.A. FOR APPROVAL.
 - APPLY WAX TAPE PRIMER, PROFILING MASTIC, WAX TAPE AND OUTER-WRAP TO ALL PIPE FITTINGS WITHIN THE VAULT (EXCEPT PRV BONNETS); REFER TO TECHNICAL SPECIFICATION SECTION 15010 FOR MATERIAL AND INSTALLATION REQUIREMENTS.



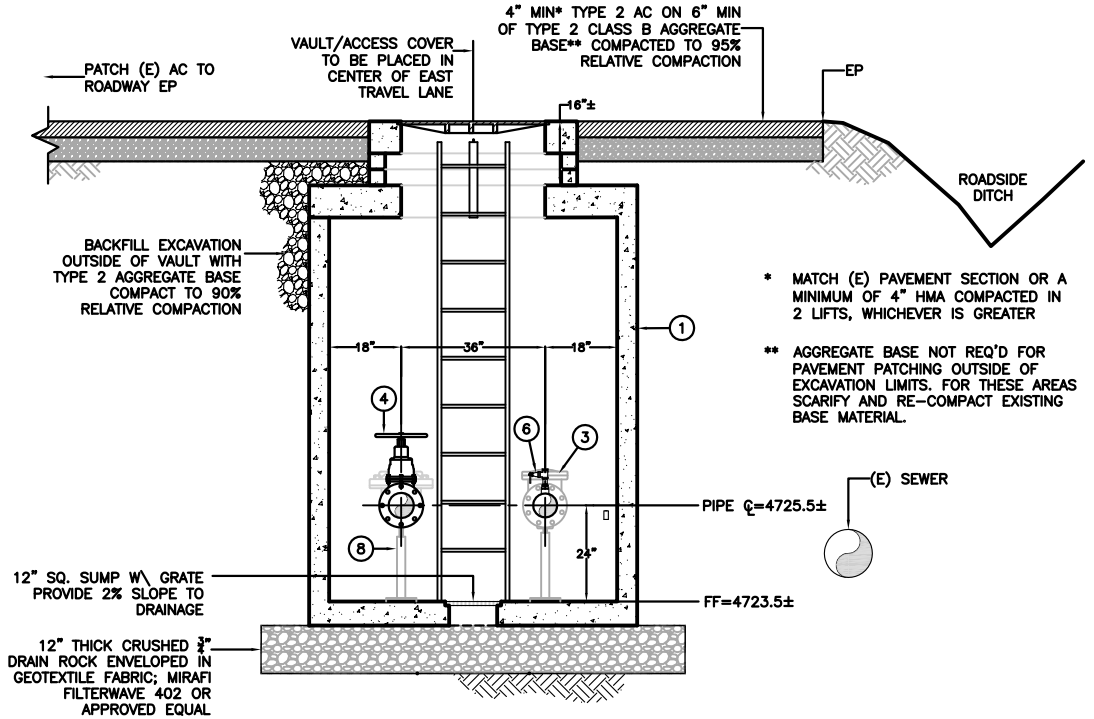
2 1" SADDLE OUTLET
NTS



3 VAULT PENETRATION
NTS



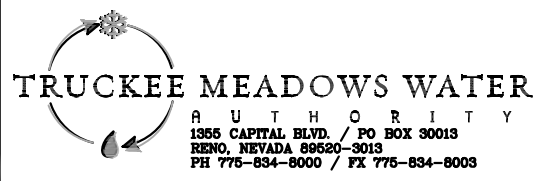
A SECTION A-A
SCALE: 1/2" = 1'



A SECTION B-B
SCALE: 1/2" = 1'

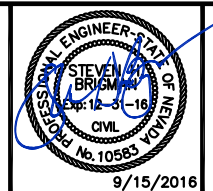
REVISION	DESCRIPTION	BY	APP	DATE
Δ	ADDENDUM 1 - ADDED 2" OUTLET	SHB	BT	10/10/18

WORK ORDER NO. 13-0017
 DESIGNED SHB
 DRAWN SHB
 DATE SEPTEMBER 2016
 CHECKED
 SUBMITTED
 RECOMMENDED
 APPROVED



NOT REPRODUCIBLE
 PROPERTY OF TRUCKEE MEADOWS WATER AUTHORITY. RETURN UPON COMPLETION OF PROJECT (Per Homeland Security Act)

TRUCKEE MEADOWS WATER AUTHORITY
SUN VALLEY ZONE 4 TO ZONE 3 PRESSURE REGULATING STATION



SHEET NUMBER
W3
 3 OF 4
 9/15/2016

