



The graphic features a yellow starburst with the text "all-new" in a green, sans-serif font. Below this, a row of seven colored circles represents the days of the week: Monday (grey), Tuesday (green), Wednesday (blue), Thursday (green), Friday (blue), Saturday (green), and Sunday (blue). The text "Assigned-Day Watering" is written in a large, bold, green font with a white outline. Below this, the phrase "easy as 1-2-3" is written in a smaller, italicized green font. At the bottom of the graphic, two more colored circles represent "Even" (green) and "Odd" (blue) watering days.

Assigned-Day Watering
easy as 1-2-3

Even Odd

**Setting Your Irrigation Timer
for Three-Day Per Week Watering**




TRUCKEE MEADOWS WATER
AUTHORITY
Quality. Delivered.

Responsible Water Use

We live in a high desert

- ◆ Recurring droughts
- ◆ 7 inches average annual rainfall
- ◆ Lake Tahoe is our primary water source
- ◆ Green landscapes provide many benefits
- ◆ Water use in summer is 4 times that of winter
- ◆ Landscape irrigation is the single biggest use
 - Turf uses the most water in the landscape



TRUCKEE MEADOWS WATER
AUTHORITY
Quality. Delivered.

Water-efficient Landscapes

We encourage the xeriscape principles:

1. Make sure you plan and design
2. Install an efficient irrigation system
3. Select water-efficient plants
4. Improve soils
5. Use mulches
6. Group plants and install practical turf areas
7. Proper maintenance



Two Sides of a Coin

Two things determine water efficiency:

1. System hardware
 - ◆ Pipes, valves, heads, hoses, emitters, etc.
 - ◆ Fixed spray, rotor, and gear-driven heads
2. You
 - ◆ When you water
 - ◆ How long you water



Types of Irrigation Systems

Manual or automatic

1. Sprinklers for turf

- ◆ Sprinklers run in gallons per minute
- ◆ Watering in cycles is most effective



2. Drip irrigation for everything else

- ◆ Drip systems run in gallons per hour
 - Different emitters have different flow rates
- ◆ Don't cycle, add/remove emitters to saturate roots



Know the Basics

- Winterization
- Check your water meter
- Timer location and features
- Zones or stations
- Irrigation valve shutoff
- Assigned-Day watering restrictions

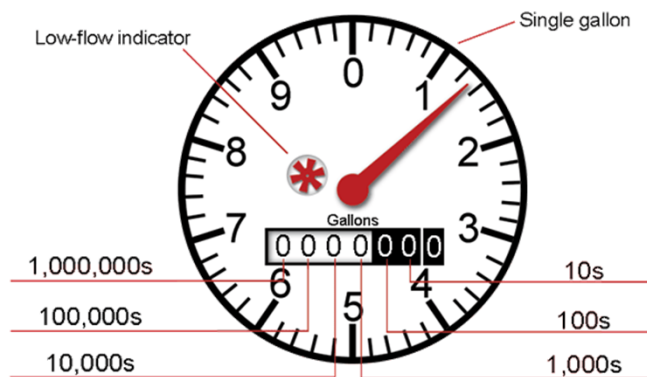


Spring Start-up

- Inspect system for misdirected or clogged heads, broken parts, missing emitters, etc.
- **Close all drain valves**
- Backflow
- Activate system
 - turn main irrigation valve on
- Check water meter



Your Water Meter



Timer Location & Features

- Know where your timer is
 - ◆ Make sure it's accessible
 - ◆ Make sure you can read the buttons/display
 - ◆ Locate the manual
 - ◆ Replace the battery
 - ◆ Set the current date and time



Timer Location & Features

- Understand its key functions
 - ◆ Watering days
 - ◆ Start times – for each program (minutes)
 - ◆ Run time – zone/station duration time
 - Total run time should fit within start times
 - ◆ Off switch for rainy or windy days
 - ◆ Manual mode for supplemental watering
 - ◆ Water budget feature



How Does It Work?

- If your home or business address is:
 - ◆ Even: water Tue, Thu & Sat
 - ◆ Odd: water Wed, Fri & Sun
 - ◆ No watering on Mondays
 - ◆ No watering from noon to 6:00 p.m.
- Water up to 3 days per week
- Evens out peak summer demand



Don't Just Set It & Forget It

- Consult our Lawn Care Guide
 - ◆ Maintenance and seasonal care
- Change timer settings as weather changes
 - ◆ At least monthly
 - ◆ Add additional start times instead of more minutes
- Water budget feature
 - ◆ Allows the watering run time for all zones/stations to be increased/decreased using a percent adjustment
- Write it down! Pin it up!



How Long to Water?

- Depends on many factors
 - ◆ System/hardware
 - ◆ Sun vs. shade, plant types, etc.
 - ◆ Slopes, clay soils, runoff, etc.
- Water & wait method
- Screwdriver test
- You are the water manager of your yard



Read Your Water Bill

- Average use per month (13 months)
 - ◆ Graph on page 2
 - ◆ Previous read vs current read
- Rates
 - ◆ Customer charge
 - ◆ Tier 1, 2 & 3
- Don't water more, water more flexibly



QUESTIONS?

Report water waste!

Conservation Department

conservation@tmwa.net

834-8005

www.tmh2o.com

www.tmwandscapeguide.com

