
Assigned-Day Watering

easy as 1-2-3

Mon Tue Wed Thu Fri Sat Sun

Even Odd

The graphic features a green rounded rectangle with a diagonal line pattern. At the top, seven circles represent the days of the week: Mon (grey), Tue (green), Wed (blue), Thu (green), Fri (blue), Sat (green), and Sun (blue). At the bottom left, two more circles represent 'Even' (green) and 'Odd' (blue). The text 'Assigned-Day Watering' is in large, bold, green and white letters, with 'easy as 1-2-3' in a smaller, italicized font below it.

Spring Irrigation Start-up



Welcome to TMWA

Spring Irrigation Start-up Workshop

The objective of this workshop is to demonstrate how to properly inspect, and safely turn on an irrigation system.

Water System Video

The screenshot shows a Windows Internet Explorer browser window displaying the Truckee Meadows Water Authority website. The address bar shows the URL: http://www.tmwa.com/water_system/resources/system_video. The website header includes the TMWA logo with the tagline "Quality. Delivered." and a navigation menu with links for "CUSTOMER SERVICES", "YOUR WATER", "CONSERVATION", "NEWS & EVENTS", and "ABOUT TMWA". A "Log in to your account" section is visible with fields for "Username" and "Password" and a "log in" button. Below the navigation, the page title is "Water System Video" and the main heading is "Overview of the Water System & Facilities in the Truckee Meadows". A sub-heading states "This is a 5-minute video." and a video player is embedded, showing a landscape view of a city with a video progress bar at 00:21 / 05:00. To the right of the video is a "Frequently Asked Questions" section with a form to "Enter question here" and a "go" button. The footer contains a navigation menu with links for "Home", "Customer Services", "Your Water", "Conservation", "News & Events", "About TMWA", "Contact Us", and "Site Map", along with social media icons for Facebook and Twitter. A copyright notice at the bottom reads: "Truckee Meadows Water Authority is a not-for-profit, community-owned water utility, overseen by elected officials and citizen appointees from Reno, Sparks, and Washoe County. © 2010 Truckee Meadows Water Authority. All Rights Reserved."

Spring Start-up

- Inspect system for misdirected or clogged heads, broken parts, missing emitters, etc.
- **Close all drain valves**
- Activate system
- Check water meter

Four Important Locations

- Backflow assembly
- Irrigation control valve box
- Vertical valve and drain sleeves
- Irrigation timer or clock

Backflow Assembly



Backflow Assembly

- Remove weather proof insulation.
- Turn both flat handles to run parallel with pipes.
- Turn both “Test cock” screws 90 degrees in either direction to close ball valves.

Irrigation Control Valve Box



Irrigation Control Valve Box

Close the drain by turning all the way to the right until it is snug, but don't force it.

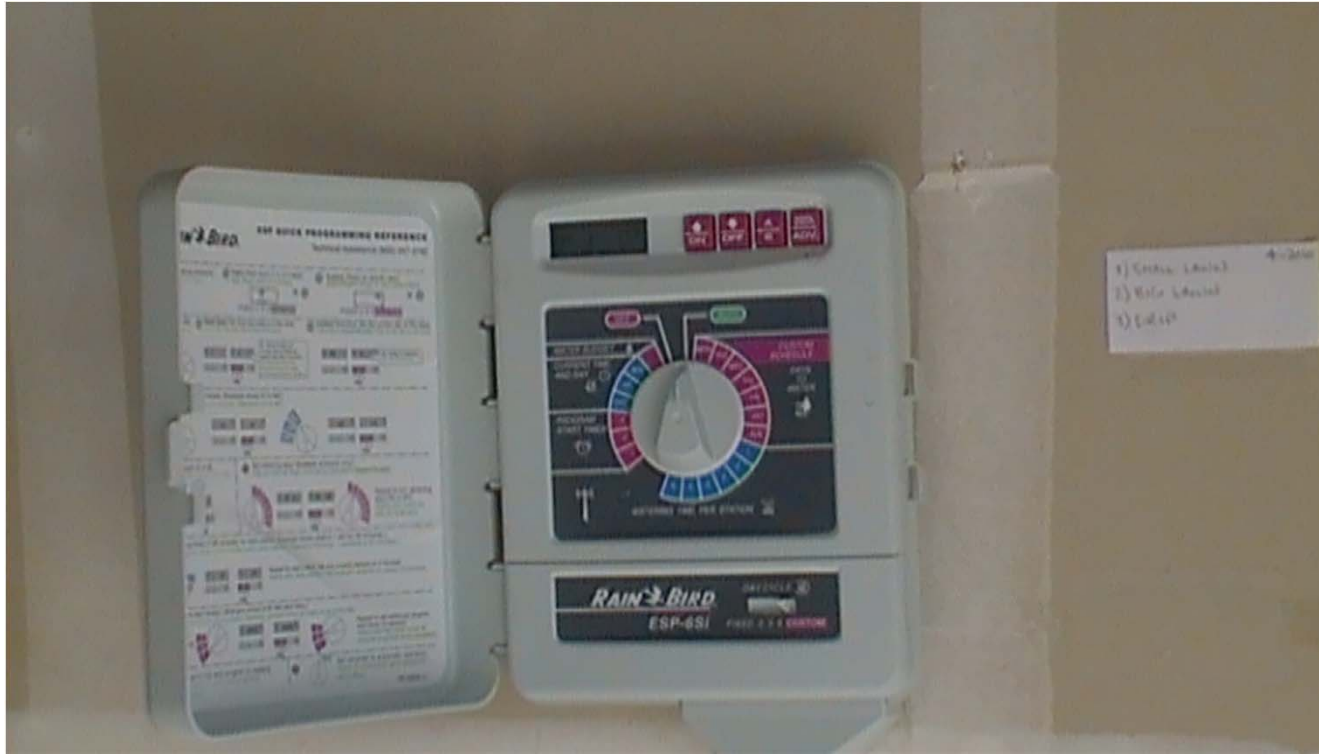
Valve and Drain Sleeves



Valve and Drain Sleeves

- Identify each by using a long sprinkler key.
- The valve is the one that is found turned all the way to the right in the closed position.
- The drain is the one that is found turned all the way to the left in the open position.

Irrigation Timer or Clock



Turn to the auto position

Irrigation Timer or Clock

Timer location and features:

- Program A/B and Manual start/Advance buttons
- On/Off or Up/Down arrow buttons
- Days of week
- Run time per zone or station
- Start times for each cycle of zones
- Current time and day
- Water budget

How Does It Work?

Assigned-Day watering restrictions

Your address ends with:

- Even number: Tuesday, Thursday & Saturday
- Odd number: Wednesday, Friday & Sunday
- No watering on **Mondays**
- No watering from **noon to 6:00 p.m.**
- Evens out peak summer demand



How Long to Water?

- Depends on many factors
 - System hardware
 - Sun vs. shade, plant types, etc.
 - Slopes, clay soils, runoff, etc.
- Water & wait method
- Screwdriver test
- You are the water manager of your yard

Responsible Water Use

We live in a high desert:

- Subject to recurring droughts
- Average of 7 inches annual rainfall
- Lake Tahoe is our primary water source
- Water use in summer is 4 times that of winter
- Green landscapes provide many benefits
- Landscape irrigation is the single biggest use
 - Turf uses the most water in the landscape

Water-efficient Landscapes

We encourage the seven xeriscape principles:

- Make sure to plan and design
- Install an efficient irrigation system
- Select water-efficient plants
- Improve soils
- Use of mulches
- Group plants and install practical turf areas
- Proper maintenance

Returning users:

GO

PDF resources



WATER EFFICIENT LANDSCAPE GUIDE

Welcome to our water-efficient Landscape Guide!

We live in a high-desert climate here in the Truckee Meadows with an average annual rainfall of seven inches. Since water in our region is a limited resource and outdoor irrigation increases usage by 400%, we encourage responsible water use. This guide addresses the seven horticultural principles, beginning with proper planning and continuing through to the maintenance process. Each step is vital for a water-efficient landscape. [Read more >>](#)

2010 Water-Efficient Landscape Awards



[Enter the awards here >>](#)

Landscape Design



1. Landscape Design and Proper Planning

- ▶ Themes
- ▶ Evaluate Your Yard
- ▶ Getting Started

2. Planning an Efficient Irrigation System

- ▶ Zoned Irrigation
- ▶ Water Quality Protection

Plant Search



3. Search by:

CATEGORY:

WATER USE:

EXPOSURE:

COLOR:

BLOOM TIME:

SOIL:

ANIMAL RESISTANT:

NATIVE:

GO

Word search:

GO

Browse by category:

CHOOSE ONE:

GO

Planting & Maintenance



4. Soil Improvement

5. Mulching

6. Planting

- ▶ Trees
- ▶ Shrubs, Ground Covers and Flowers
- ▶ Lawn

7. Maintenance



[Acknowledgements](#)
[Comments](#)
[Sitemap](#)

[Water-efficient landscape awards](#)
[Living with fire](#)
[Contact us](#)



© 2010, Truckee Meadows Water Authority, All Rights Reserved



TRUCKEE MEADOWS
COMMUNITY
FORESTRY
COALITION

Two Sides of a Coin

Two things determine water efficiency:

- System hardware
 - Pipes, valves, heads, hoses, emitters, etc.
 - Fixed spray, rotor, and gear-driven heads
- You
 - When you water
 - How long you water

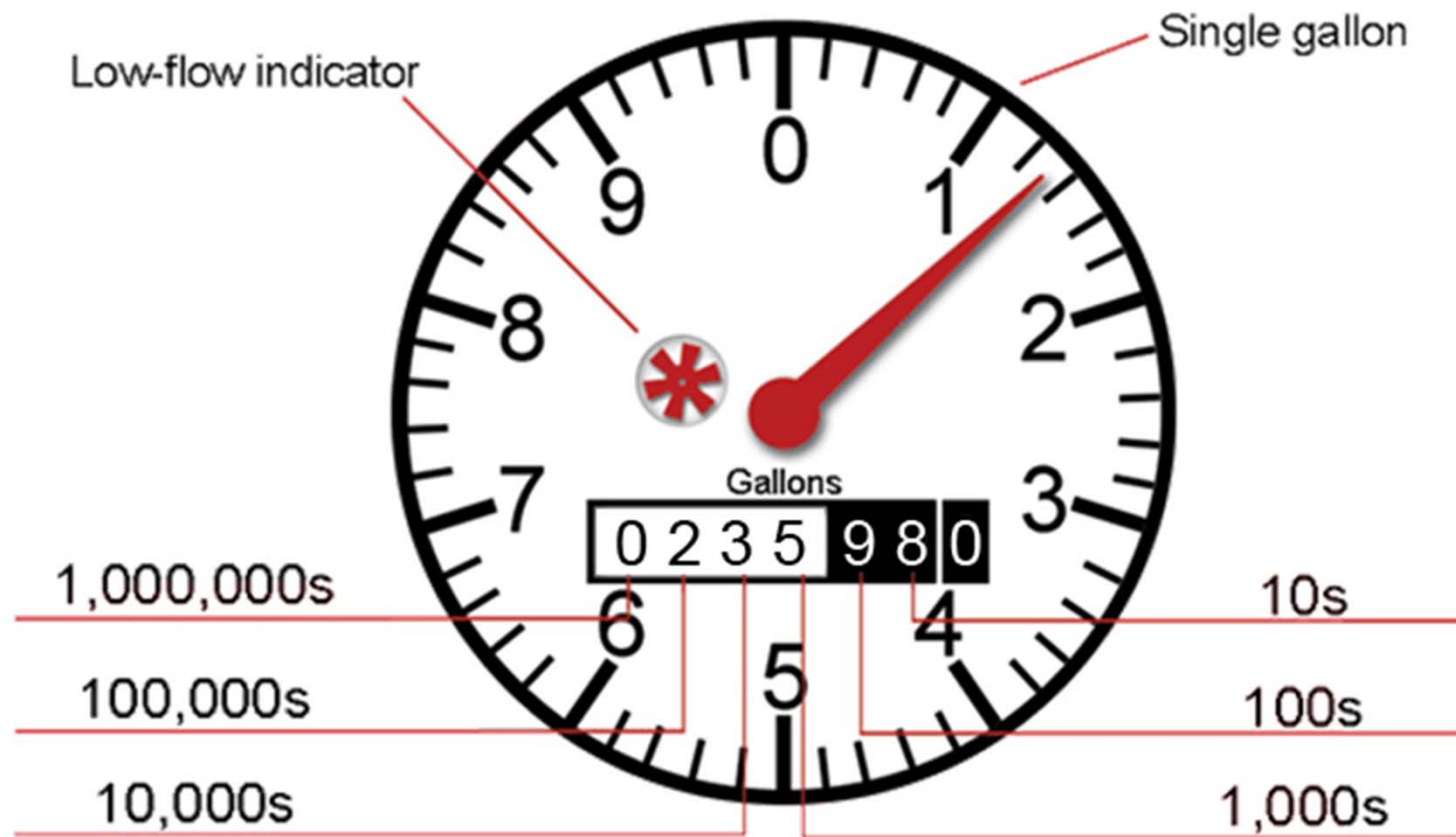
Types of Irrigation Systems

Manual or automatic:

- Sprinklers for turf
 - Sprinklers run in gallons per minute
 - Watering in cycles is most effective
- Drip irrigation for everything else
 - Drip systems run in gallons per hour
 - Different emitters have different flow rates
 - Don't cycle, add/remove emitters to saturate roots



Your Water Meter



Read Your Water Bill

Page 2 reveals:

- Graph with usage for past 13 months
- Dates of current billing cycle & number of days
- Prior read vs. current read = billed usage
- Rates for water usage
 - Customer charge for service line
 - Tiers of usage (1, 2 & 3) with associated cost

[How to read your water bill](#)

Don't water more, water more flexibly!



QUESTIONS?

Report water waste!

Conservation Department

conservation@tmwa.net

834-8005



truckee meadows
COMMUNITY
FORESTRY
COALITION

